

2 5m requirement for photovoltaic panel columns





Overview

What are solar photovoltaic design guidelines?

In addition to the IRC and IBC, the Structural Engineers Association of California (SEAOC) has published solar photovoltaic (PV) design guidelines, which provide specific recommendations for solar array installations on low-slope roofs 3.

How many solar panels do I Need?

You need the installation of ten solar panels having approximately 18% conversion efficiency and 100 Watts ratings of each. Compute the total energy output of the solar panel using the following formula: Total surface area x solar irradiance x conversion efficiency = total power output.

What are the structural requirements for solar panels?

Structural requirements for solar panels are crucial to ensure their durability, safety, and efficient performance. These requirements vary depending on the type of installation, such as rooftop or ground-mounted systems, as well as the specific location and environmental factors.

How much space do solar panels need?

For installing all the solar panels in one row, approximately 1m x 5.56m of space is essential as each solar panel is 1m x 0.556m in size. The results of the calculation of your solar panels may change because panels are installed at an angle to the surface of the earth.

What are the design and engineering requirements for solar panels?

These requirements vary depending on the type of installation, such as rooftop or ground-mounted systems, as well as the specific location and environmental factors. Proper design and engineering of solar panel structures must take into account several factors, such as wind loads, snow loads, and seismic forces.



How many watts can a 1m² solar panel produce?

Imagine a solar panel has a conversion efficiency of 100% i.e. it converts all the solar energy into electrical energy then all you would need is a 1 m² solar panel to produce 1000 Watts of electrical energy :). More than 20 years of experience in various organizations in Pakistan, the USA, and Europe.



2 5m requirement for photovoltaic panel columns



Calculate Rooftop Area for Solar Panel Installation

Lastly, Divide the Total Size of the Solar Project (in kW) derived in the above step by the Total Size of 1 Solar Panel, and you'll get the Total Number of Solar Panels (in Nos.) ...

How Many Solar Panels Do I Need? Solar Panel Calculator

The UK saw an average of 4.7 sunlight hours during 2018. Because the number of sunlight hours varies according to the month it's a good idea to get an average for the year.



How Many Solar Panels Do I Need For My UK Home? 2024 ...

A solar panel system can cost between £2,500 - £13,000, before installation fees. However, they can save you up to £1,005 annually and pay for themselves over time. Additionally, while ...

[High Rise Elevated Solar Structure](#)

Solar panels are placed at a height of 6 to 8 feet above ground level. With a solar pergola design, the solar panel can be readily installed and the extra benefits of providing ...



Ground Mounted PV Solar Panel Reinforced Concrete Foundation

Building Code Requirements for Structural Concrete (ACI 318-14) and Commentary (ACI 318R-14) Figure 2 - Solar Panel Foundation Model 3D View . 2 Figure 3 -Defining Concrete Pier ...

Sizing Solar Structure Components in Solar Panel ...

Learn about structural requirements for solar panels like legs, rafters, and purlins for optimal stability. Explore factors influencing mounting structures for solar panels for sustainable solar installations.



Structural Requirements for Solar Panels -- Exactus Energy

ASCE 7 Guidelines. The American Society of Civil Engineers (ASCE) provides guidelines for the structural design of solar panel installations through their publication, ASCE ...



Solar Power Modelling -- Solar Resource Assessment in Python

The characteristics of PV modules in Python can be retrieved by using pvlib. The 2 main databases for PV modules that can be imported are: (1) the Sandia Laboratories PV module ...



How to Calculate the Surface Area Required by Solar ...

We know the required Total Output Power is 1000 Watts (10 panels x 100 Watts), the Solar Irradiance for a surface perpendicular to the sun's rays at sea level on a clear day is about 1000 Watt/m² and the Conversion ...

Solar Panel Building Regulations & Planning Permission

Solar panel building regulations. Solar panel installations have to pass standard building regulations for the property - it's a legal requirement for many home improvements.. The key ...



[On Roof 2m & 2.5m Solar Thermal System](#)

Joule Navitas On-Roof solar systems have been tested up to four times the requirements of EN12975: 1-2. The high efficiency collectors are further tested to determine their maximum ...



Concentrated Photovoltaics

concentrator photovoltaic (CPV) system comprises of a solar concentrator using lenses (Figure 2), or mirrors (Figure 3), a tracking mechanism, solar cells, and a heat sink. On a per-area basis, ...

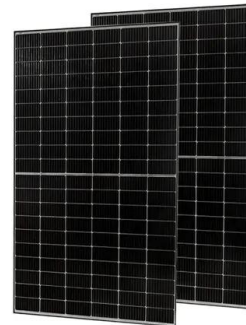


Structural Requirements for Solar Panels -- Exactus Energy

Understanding and addressing the fundamentals of solar panel structural requirements can help ensure the safe and effective operation of a solar energy system. ...

Building regulations for solar panels: explained [UK, 2024]

Solar building regulations: at a glance. ? The main regulations are about structural safety, electrical safety, and ventilation. Local authority approval is a must. Your ...



Solar Panel rails PV module mounting , roof fixing , 3.65m length

K2 solar panel rails 3.65m Lengths. New ultra light solar panel roof rails enable less-waste reducing cutting time. These ideal solar panel rail lengths will hold up to 3 full size landscape ...



Solar Panel Calculator , Solar PV System Calculator

The simple PV array size calculator below roughly estimates the amount of space a solar power system will take up on a roof and the amount of power the system might generate. The given ...



Solar Panel Wind Load Calculation ASCE-7-16 , SkyCiv

The wind directionality factor, (K_d), for the solar panel is equal to 0.85 since the solar panel can be considered as MWFRS (open monoslope) when the tilt angle is less than or equal to 45° and as a solid sign ...

How close to the edge of your roof can your solar panels go?

In the past I've written about solar panel clamping zones which determine where, on a solar panel's edge, you can place the clamps that attach the modules to their mounting ...



2MW / 5MWh
Customizable



How to determine the appropriate solar array size to install?

Estimate the approximate number of panels that can be fitted on your roof. The standard size commonly applied to roof fitted solar panels is $1.7m^2$ (that is $1.698m \times \dots$



[2.5m X2.5m Pergola , Wayfair .uk](#)

Shop Wayfair .uk for the best 2.5m x2.5m pergola. Shop Wayfair .uk for the best 2.5m x2.5m pergola. Black; - Material: Metal, Polyester; - Overall Dimension: 3L x 3W x 2.25Hm; - ...



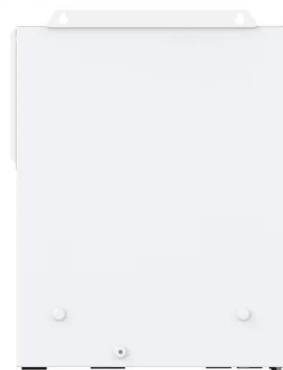
How to Calculate the Surface Area Required by Solar ...

A 1 m2 solar panel with an efficiency of 18% produces 180 Watts. 190 m2 of solar panels would ideally produce 190 x 180 = 34,200 Watts = 34.2 KW. But inclined solar panels also need some spacing between them so ...



Column -- Panel v1.5.4

The Column layout allows arranging multiple panel objects in a vertical container. It has a list-like API with methods to append, extend, clear, insert, pop, remove and __setitem__, which make ...



[Flat Slabs 3.1 Introduction](#)

slab for the whole panel width is such that: 2 1) 3 2 (8 (d) c o h L g q L M t Where L 1 is the panel length parallel to span, measured from centers of columns. L 2 is the panel width, measured ...



Structural and Building Plans Requirements for Rooftop Solar PV

any plinth, platform or other base erected for the purpose of supporting the solar panels that exceed a height of 2.5m; the solar panels also function as a roof shelter, covering an area that ...



The Required Land Area for Installing a Photovoltaic Power Plant

Till now the conversion efficiency of the commercial photovoltaic (PV) solar modules is in the range of 14 to 20%. Therefore, PV power plants need very large area to ...

Advanced photovoltaic technology can reduce land requirements ...

We find that conventional photovoltaic will require 0.5 to 1.2% of global land area to meet projected energy demands by 2085 without accounting for climate change ...



[5 Metre Lighting Column Lamp Post 5m](#)

Column Specifications: Root Mounted Column: o 5 Metre Column o Column Diameter: 76mm o Root Length: 800mm o Root Diameter: 140mm o Cable Slot in Root: 150mm x 75mm o Door ...



Solar panel output: How much electricity do they produce?

A solar panel's power output is measured in kilowatts (kW) A three-bedroom house will typically need a 3.5 kilowatts peak (kWp) system; Solar panels cover roughly 50% ...



How Many Solar Panels Do You Really Need for UK Homes?

Calculate your household's average daily energy consumption in kilowatt-hours (kWh). This helps estimate the solar panel capacity needed. Solar Panel Efficiency: Consider the efficiency of ...

Contact Us

For catalog requests, pricing, or partnerships, please visit:
<https://www.vdbconstruction.co.za>