



**VDB Solar Solutions**

# **23cm solid state power amplifier**





## 23cm solid state power amplifier



### [Amateur Radio Station W6PQL](#)

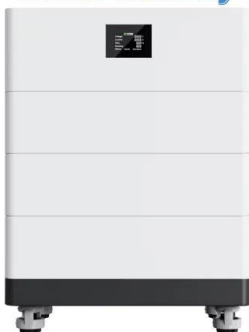
Latest items added to parts stock: Inexpensive preamp boards (LNAs) for 144 through 1300 MHz 0.5 nominal NF at VHF/UHF, less than 1 db NF at 23cm A full array of assemblies for high power 1.8 to 54 MHz amplifiers High power LDMOS transistors: ART700 (700w), BLF188xr (1400w), MRF1K50 (1500w), ART1K6 (1600w), MRF13750 (750w)

### [Solid State Power Amplifiers](#)

Click below for pdf Frequency Band Power (W) Duty (%) Max. Typical Gain (dB) Min/Max @ Rated P out Efficiency (%) Typical DC Voltage Input Output Connection Weight (lbs/kg) (NTE) MEC 7011U 225-400 MHz 200 CW 50 20 48 N 10 MEC 7003S 2.7-3.5 GHz



### High Voltage Solar Battery



### Gemini 6 1.5K 1500W 50MHz Solid State Linear Amplifier

1500W CW Output 50-54MHz Solid State amplifier MRFX1K80H LDMOS 2.5-25W drive options Integral Power Supply 100-260V 50/60Hz input Massive cooling for Datamode / ntest use Sequenced preamp power and control 14.5Kg

### [XRF-286 Amplifiers for 23cm](#)

The XRF-286 is a wonderful part for use on 1296, and one of the few choices available for developing significant solid-state power on that band. It is an unmatched 26v LDMOS transistor

...



 LFP 280Ah C&I

[MKU PA 23CM-1200W A, Power Amplifier](#)

High power linear amplifier for the 23 cm amateur radio band. Our high-performance amplifier for the 23 cm amateur radio band achieves great performance, high efficiency and best linearity. ...



**Amplifier (???)**

SSPA (Solid State Power Amplifier) Solide state?  
?? ?? ??? ?? ?? ??? ???? (Diode, Tr)? ??? ???.  
SSPA? ???? ?????????? ?? ?????? ??? ??? ?? Power  
Amp? ???, ??? ??? ??? (BJT,FET)? ???? ?? ?????????  
????.



**BEKO HLV-523 (1270-1300 MHz) RF Power Amplifier**

BEKO HLV-523. 23 cm RF Power Amplifier.  
"Designed for the serious Weak Signal, EME, Digital, & Contest Operation!" The BEKO HLV-523 employs advanced German-engineered, solid-state ...





### BEKO HLV-1023 (1270-1300 MHz) RF Power Amplifier

BEKO HLV-1023 23 cm RF Power Amplifier "Designed for the serious Weak Signal, EME, Digital, & Contest Operation!" The BEKO HLV-1023 employs advanced German-engineered, solid-state technology to deliver instant on, no compromise performance. The



### ESS



### Rugged Military X-Band Solid State Power Amplifiers (SSPA)

Rugged & COTS X-Band Solid State Power Amplifiers (SSPA) Systems for Military & Government applications for all X Band frequencies from 7.90 to 8.40 GHz View as Grid List 23 items Page You're currently reading page 1 Page 2 Page 3 Page Next Show

### Klitzing Amplifiers

High power amplifier for 1296 1 KW SSPA for 1.8-54 MHz A 1.5 KW LPF for 160-6m 1.8 to 54 MHz Dual Directional Detector In the late 70's, I manufactured and sold a line of solid-state linear amplifiers designed for the weak-signal enthusiast. Occasionally, I



### 23cm 60W Linear Amplifier - VK2TIM on the web.

You will notice on the left of the picture above, I have a 6dB SMA attenuator at the input, so I can safely drive the amplifier with a TS2000X (or any 23cm rig)



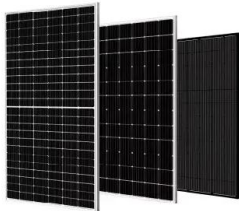
[Solid-State Power Amplifiers , SpringerLink](#)

In this chapter, we will examine the basic operation of some common power amplifier circuits. Recall that the capacitively coupled, class A amplifiers covered in the last chapter have a maximum theoretical efficiency of 25%. This means that if you were to design a



[MKU PA 23CM-1200W A, Power Amplifier](#)

High power linear amplifier for the 23 cm amateur radio band Our high-performance amplifier for the 23 cm amateur radio band achieves great performance, high efficiency and best linearity. In contrast to tube amplifiers, an LDMOS transistor with a supply voltage of only +50 V is used here.



[XRF-286 Amplifiers for 23cm](#)

The XRF-286 is a wonderful part for use on 1296, and one of the few choices available for developing significant solid-state power on that band. It is an unmatched 26v LDMOS transistor that was once made by Motorola, and can still be found ...



**2MW / 5MWh  
Customizable**

[432MHz 300W Solid State Linear Amplifier](#)

Designed, manufactured and assembled entirely the UK, the GEMINI linear amplifier is a solid state linear amplifier with nominal 300W output available in 6/4, 2 and now 70cm versions. Designed to fill a market gap between the low power outputs of transverters and





## **budget\_23cm\_band\_RF\_power\_amplifier/RE ADME.md at main**

1 ??· Contribute to bg3mdo/budget\_23cm\_band\_RF\_power\_amplifier development by creating an account on GitHub. Typically, the above design encounters a draft bias issue, causing changes in the working conditions as the PA heats up. This issue is exacerbated when



### [LDMOS RF Power Amplifier 23cm 300 Watt - ...](#)

Fully assembled LDMOS RF Power Amplifier 23cm 300 Watt can be equipped with: - PA-23cm-2W-IN-300W-OUT-pallet with integrated driver, configured for Input TX power

## **An X-band GaN combined solid-state power amplifier**

Based on a self-developed AlGaIn/GaN HEMT with 2.5 mm gate width technology on a SiC substrate, an X-band GaN combined solid-state power amplifier module is fabricated. The module consists of an AlGaIn/GaN HEMT, Wilkinson power couplers, DC-bias circuit and microstrip line. For each amplifier, we use a bipolar DC power source. Special RC networks at ...



## **Linear Amp Gemini 23 - 1296MHz 250W Solid State Linear ...**

Solid state design. 250W output (1dB compression point >200W) NXP BLFG13L-250P LDMOS. Integral 50V Linear Power supply. Drive requirements 8W. Advanced ...



### 60w 23 cm Amplifier

Like most of the solid-state 'bricks', all one needs to do is connect power, a PTT line from the radio, an antenna and the transceiver or transverter. If one wished to use this as a driver for a larger amp, the transfer switch can be bypassed, and the internal amplifier accessed directly via the bulkhead SMA connectors on the left.



### [Solid State Power Amplifier at CERN](#)

Solid State Power Amplifier at CERN, I.FAST Accelerator-Industry Co-Innovation Workshop, CERN, May 3, 2022 [eric.montesinos@cern](mailto:eric.montesinos@cern) 11 CERN SPS Thales Solid State Power Amplifiers, 32 towers x 144 kW @ 200 MHz, combined into 2 x 2 MW amplifiers,



**2MW / 5MWh  
Customizable**

### [60 W Power Amplifier Kit for 23 cm](#)

Gain and input return loss of the power amplifier tuned on 1270 MHz: Schematic Supply +27V DC 5 A max. RF OUT MON. OUT +12 14 V DC for TX RF IN RFC 78L05 RFC 5A 2 x 15R! max. 4 W 220 nF 4,7 R + 10 Wdg 150 R 39R 1 K 1 nF 1 nF 47 pF 6 pF 10 μF





### 23cm/70cm SSPA

23cm (1296MHz) MRF9045/MRF9060 High Power Amplifier Project 23cm MRF9045 40W solid state RF amplifier I had been looking on the web for 1296 MHz Power amplifier designs and had stumbled across G4BAO web site which has a design for a 45W PA which was featured in the RSGB magazine Rad Com.

### MKU PA 23CM-1200W A. Power Amplifier

MKU PA 23CM-1200W A, Power Amplifier 1280 1300 MHz 1200 W High power linear amplifier for the 23 cm amateur radio band Our high-performance amplifier for the 23 cm amateur radio band achieves great performance, high efficiency and best linearity. In



### LDMOS Power Amplifiers for 23 cm - 150 W to 1 kW

o Concept of a 150 W 1296 MHz power amplifier module with a bill of material cost

### VHF Power Amps

MOS Solid State 144 MHz Power Amplifier 1 x MRF151 Built by Miska, YU7MS All other data for items developed by YU7MS: PA 144MHz MRF151.zip New! Not yet published in magazines VMOS Solid State 2m Power Amplifier 2 x -UHF



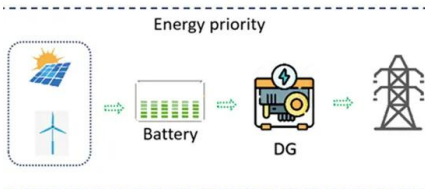


### 23cm SSPA

I've built a Solid State Power Amplifier (SSPA) for the 23cm / 1296MHz band, with 2x MRF286 Power MOSFETs based on a design by a French radio amateur F1ANH and published by F6BVA (see Links). A picture is worth a thousand ...

### High Efficiency solid state amplifiers A

23CM High Gain Power Amplifier with transverter, 1W-in, 500W out References Maresh Shah, Richard Rowan, Lu Li Quan Li, Eddie Mares, and Leonard Pelletier AN3789 Clamping of high power RF transistors and RFIC in Over



### 23CM150 23cms 150W Self-Contained Linear Amplifier

The AC power supply is built-in and the entire package is solid state. These amplifiers are high gain devices and may be driven to the full 500W output (150W on 23cm) from just 4W input. Full overdrive protection is provided. The front panel meter monitors power

### Review on Solid-State Narrow and Wide-Band Power Amplifier

This review paper examines the advancements in solid-state power amplifiers (SSPAs) for wireless communication technology. As mobile devices rely on efficient power amplifiers to maintain battery life and ensure clear signal transmission, fabrication technologies like complementary metal-oxide-semiconductor (CMOS) and gallium nitride (GaN) are ...

SUPPORT REAL-TIME ONLINE MONITORING OF SYSTEM STATUS





## Contact Us

---

For catalog requests, pricing, or partnerships, please visit:  
<https://www.vdbconstruction.co.za>