

250W photovoltaic panel size





Overview

The standard size of a 250-watt solar panel is approximately 17.5 ft² (1.62 m²); its dimensions are 65 x 39 inches (about 1651 x 991 mm). What is a 250W solar panel?

A 250W solar panel is one of the most widely manufactured panels and is therefore used in many businesses, homes, and cottages by owners who wish to go green. (250w Solar Panels (Great but.)).

What is a 350W solar panel?

They'll be using solar system "size" to refer to the combined total of each solar panel's wattage or power output. In the UK, a standard 350W residential solar panel is around 1.89m long, 1m wide and 3.99cm thick and contains approximately 60 solar cells.

How much space does a 350W solar panel take up?

In the UK, a standard 350W residential solar panel is around 1.89m long, 1m wide and 3.99cm thick and contains approximately 60 solar cells. This means that a 350W solar panel will take up around 1.89m² of roof space – although more efficient panels can be smaller but produce the same amount of power. What is solar panel wattage?

.

How many volts does a 250 watt solar panel produce?

Each 250-watt solar panel consists of approximately 32-33 0.46-volt cells.

What is the wattage of a solar panel?

The wattage of a solar panel is the maximum amount of power it generates when exposed to sunlight under ideal conditions. Common residential solar panel wattages in the UK are 250W, 300W, 350W and 400W, but higher ratings are available.



How much does a single 250-watt solar panel cost?

A single 250-watt solar panel can cost anywhere from \$175 to \$375, depending on the system. The price for a homeowner for the entire solar panel system ranges from \$3910 to \$13600, with most panels costing between \$1890 and \$6490. The cost per watt for solar panels ranges from \$0.30 to \$2.20.



250W photovoltaic panel size



Photonic Universe 250W Monocrystalline Rigid Framed Solar Panel

Solar cell type: Monocrystalline Nominal power: 250W Max-power voltage: 20.2V DC Max-power current: 12.38A Power allowance range: +/- 3% Short circuit current: 13.12A Open circuit ...

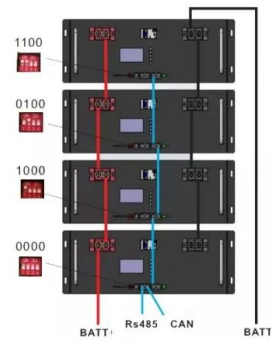


Solar Panel Sizes & Dimensions (UK): Simply Explained

Power output: These panels typically generate between 250W and 450W. Higher-wattage panels mean fewer panels are needed to meet your energy requirements . How to choose the right ...

[250 Watt Solar Panel: An Ultimate Guide](#)

But don't be deceived by the size. These panels pack quite a punch when it comes to energy conversion. They're quite efficient, converting around 15-20% of sunlight into ...



250-Watt Solar Panels: Are They Right For You?

The number of solar panels you'll install depends on the electricity you want to generate and the space available for solar panels. The table below compares different-sized ...



12.8V 100Ah



[Solar Panel Sizes & Dimensions UK \(2024\)](#)

The most common solar panel sizes for residential installations are between 250W and 400W, while larger commercial installations may use panels up to 500W or more. The size of a solar panel affects its efficiency, ...

[Solar Panel Size: Dimensions Guide](#)

Solar Panel Size: Power Output (Wattage) Solar panel size refers to the amount of power a solar panel can produce over a given time. It's stated in wattage - the voltage ...



[Solar Panel Sizes & Wattage](#)

The physical size of a solar panel directly influences the number of solar cells it can house. This, in turn, determines the amount of electricity that can be generated from the captured solar energy. To generate 1 kilowatt (1kW) of ...





Solar Panel Sizes & Dimensions in the UK (2024) , Glow Green

Solar Panel Size. When speaking about a solar panel's size, people can often become confused. Solar panel size can refer to the power it produces (measured in watts) and ...



A Comprehensive Solar Panel Size Chart: Find the Right Fit

Discover the perfect fit for your energy needs with our comprehensive solar panel size chart. Navigate solar panel dimensions for optimal efficiency. 250W-400W: ...

Solar panel size: choosing the right dimensions

Solar panel size. Solar panels are equipped with photovoltaic cells, We based our calculations on a 250W solar panel, which measures 1.9 m x 1 m. Solar panel system ...



[Monocrystalline 250w Solar Panel 5Busbar](#)

250w Monocrystalline Solar Panel, this is a genuine 250w panel with a massive 5m Cable with MC4 plugs. Rapid delivery from the UK. 100w Monocrystalline Solar Panel, rigid alloy frame. ...





Sharp NDRC250 250 Watt Solar Panel Module

The reliable solution: 250W / 15.2% module efficiency Polycrystalline silicon photovoltaic modules Anti-reflex coating to increase light absorption This solar panel has a panel size of 1.64 ...

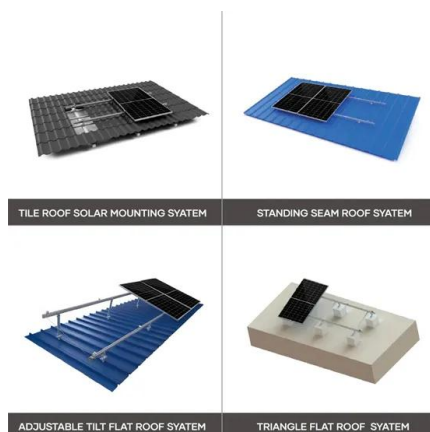


Solar panel sizes and wattages , The Independent

Get all the details on the right solar panel sizes and wattages for your home. This guide explains the most common solar panel sizes and dimensions across the UK. A ...

250W Panasonic HIT N250 Slim Solar Panel with Efficient N-Type ...

This slim, high-quality & highly-efficient 250W solar panel is from Panasonic. Its HIT® solar cells, water drainage system & long lifespan make it perfect for a wide variety of applications, from ...



250W solar panel 12v high efficiency

250W solar panel 12v This high efficiency, waterproof 250W 12V monocrystalline solar panel is perfect for permanent outdoor use to provide free electricity for charging 12V batteries to power various applications such as in a camper van, ...



Solar Panel Sizes, Dimensions & Weight

You might also hear of 120 half-cell panels (equivalent size to 60 cells) or 144 half-cell panels (equivalent size to 72 cells). These half-cell panels, as you might suspect, ...



Solar Panel Sizes (Energy Use & Dimensions Guide)

Solar panel sizes guide with Residential solar panels typically possess between 250W to 450W depending on how efficient they are in converting sunlight into energy and the solar panel sizes. Standard Solar Panel Size. Solar panels are ...



250w Solar Panels (Great but ...)

The average size of a standard 60 cell 250w solar panel is 3.25 feet by 5.5 feet and weighs around 19 kg. However, each solar panel varies slightly in size depending on the ...



Choosing the Right Fit: Understanding Solar Panel Sizes in the UK

The larger the solar panel, the more electricity it can produce. For example, a 300W solar panel is typically larger than a 250W solar panel, and it can produce more electricity than the latter. ...





Solar Panel Fuse Calculator: How to Determine the Required Fuse Size

The minimum fuse rating required for your 250W solar panel is fuse size = 1.56 x 9.5A = 14.82A. Now, you would need to use a fuse with a rating of at least 15A (after ...



Solar Panel Sizes and Wattage: A Comprehensive Guide to ...

Solar panels come in various sizes depending on their wattage or power output. A common residential solar panel size is approximately 65 inches by 39 inches, and typically ...



Solar Panel Sizes, Dimensions & Wattages In The UK

While the terms 'solar panel size' and 'solar panel dimensions' may appear similar, they have distinct differences that are crucial for every solar panel owner to ...

Our Lifepo4 batteries can be connected in parallels and in series for larger capacity and voltage.



Solar Panel Size

A 250W solar panel tends to cost £150-£250. A 350W solar panel size costs between £350-£600. A 400W solar panel size costs in the range of £400-£750. How heavy is a ...





The Ultimate Guide to 250W Solar Panels: The Power ...

Participants can enjoy the advantages of solar power without the need for individual installations. Frequently Asked Questions (FAQs)
What is the average size of a 250W solar panel?
The average size of a 250W solar panel is ...



[Should you buy 250-watt solar panels?](#)

Key takeaways. 250-watt solar panels are rarely used in new rooftop solar installations in 2024. A 250-watt solar panel will produce approximately 1 kWh of solar power per day, depending on ...



Guide to Solar Panel Sizes & Dimensions (November ...

Solar panel size ranges from 250W to 450W for residential solar panels. Refers to the total amount of power a solar panel can generate over a period of time. This is usually calculated by multiplying the panel voltage by ...



How big are solar panels? Solar panel size and weight

Solar panels generate clean energy and significant savings, but they aren't a one-size-fits-all solution. The size and weight of solar panels vary depending on the make and ...





Contact Us

For catalog requests, pricing, or partnerships, please visit:
<https://www.vdbconstruction.co.za>