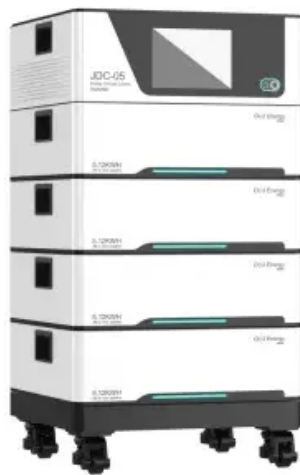


2900W photovoltaic panels in parallel





Overview

Here's how to calculate the power output of your solar array, regardless of how you're wiring your panels together -- and regardless of whether or.

Here's a quick overview of how to wire solar panels in series and parallel. For more in-depth instructions, check out our full tutorial. Full tutorial:.

What is the difference between connecting solar panels in series vs parallel?

Connecting your solar panel in series vs parallel affects current flow and is dictated by your installation's setup. Warning: Science below! While we're not going to get too deep into the details, the difference between connecting solar panels in series vs in parallel is an intermediate level solar discussion.

How to wire solar panels in parallel?

Wiring solar panels in parallel implies connecting positive terminals of each panel together and wiring the negative terminals of each panel together as well. Then, they are connected to the charge controller or to the inverter of the solar system.

Does connecting solar panels in parallel affect wattage?

No. Connecting solar panels in serial or parallel does not impact how much wattage they produce in laboratory conditions. Connecting solar panels in parallel increases amperage and keeps voltage constant. Series connections produce higher voltage while maintaining amperage, regardless of how many panels you use.

Can a 6V solar panel be wired parallel to a 12V panel?

In this case, it is possible to wire the two 6V panels in series and then wire the resultant array in parallel to the 12V panel. However, the latter type of connection is at the expense of efficiency. It is therefore essential, before making a parallel connection, to carefully check the voltage of the solar panels.

What is the difference between a series and a parallel solar inverter?



Constant Voltage: Unlike series connections, you can add additional PV panels without increasing the voltage. This makes parallel connections invaluable in applications that require 12V power input, like many motorhome and recreational vehicle systems. Similarly, solar inverters have a maximum voltage capacity.

Can I install solar panels as a series or parallel circuit?

It is also possible to install solar as a combination of series and parallel circuits to try and maximize the advantages of both types of wiring. This combination can also help you achieve a desired amount of voltage or current depending on what your needs are.



2900W photovoltaic panels in parallel

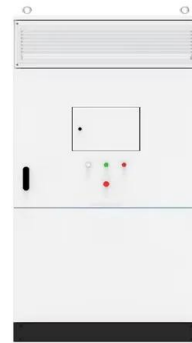
How to wire solar panels in series vs. parallel



When multiple panels are wired in parallel, it is called a PV output circuit. Wiring solar panels in parallel causes the amperage to increase, but the voltage remains the same. So, if you wired ...

Connecting Solar Panels in Series or in Parallel?

Yes, many large solar panel installations combine series and parallel wiring in one array to maximize the product of each group of panels. It's possible to strike the optimal ...



Understanding the series and parallel connection of ...

The resulting effect is to produce a solar panel system with an increased amperage rating (the sum of the individual amperages in the parallel array) while the total voltage remains the same. So, for instance, by ...

Wiring Solar Panels in Series vs Parallel: Which Is Better?

Connecting your solar panel in series vs parallel affects current flow and is dictated by your installation's setup. Warning: Science below! if you installed 5 solar panels ...



Solar Panel Wiring Basics: Complete Guide & Tips to ...

This connection wires solar panels in series by connecting positive to negative terminals to increase voltage and connects these strings in parallel. All solar panel strings connected in parallel have to feature the same ...



[How to Connect 3 Solar Panels in Parallel](#)

For the same, if you have solar panel 4, carry on the connection from panel 3 to panel 4 and then connect it with the controller. This is how to connect 3 solar panels in ...



Shading Solar Panels Series or Parallel , Clever Solar Power

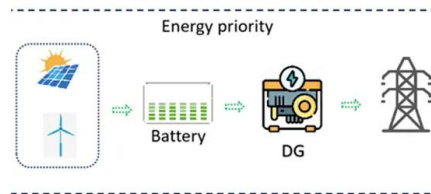
There is really nothing you can do about this if you have a single solar panel. Shade has an effect on current, while temperature has an effect on voltage. My RV has ...





Should You Wire Your Solar Panels In Series Or ...

Find out whether you should wire solar panels in series or parallel for your camper van electrical system. but the output voltage of the array would be equal to the solar panel with the lowest voltage rating. ...



Anleitung: Solarmodule richtig in Reihe & parallel schalten

Für einen optimalen Betrieb von Photovoltaikanlagen müssen eine Vielzahl von Faktoren beachtet werden. Die bedarfsgerechte und leistungsoptimierte Verschaltung von Solarzellen und ...

Solar Panel Series vs Parallel: What's The Difference

Wiring Solar Panels in Parallel. When discussing solar panel series vs parallel configurations, parallel wiring is a distinct approach to connecting multiple solar panels. In a ...



LPR Series 19' Rack Mounted



How to Connect Solar Panels in Parallel: A Step-by-Step Guide

Let's talk about using parallel connections in real life. Imagine hooking up three 12-volt, 5.0 ampere PV panels in parallel. You'd get 15 amperes and keep the voltage the ...





Solar Panel Series Vs Parallel: Wiring, Differences, And ...

In this tutorial, I'll show you how to wire solar panels in series and how to wire them in parallel. Once we've got that covered, I'll also explain the difference between these two configurations in Voltage (Volts) and Current ...

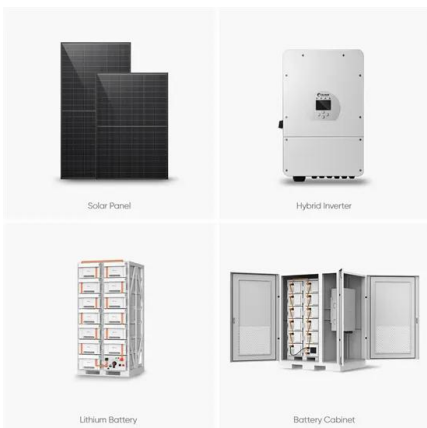


How to Wire Two or More Solar Panels in Parallel

In this case, it is possible to wire the two 6V panels in series and then wire the resultant array in parallel to the 12V panel. However, the latter type of connection is at the expense of efficiency. ...

Should Solar Panels Be Connected In Series or Parallel?

Series vs. Parallel Connections: A Comparison.
Series Connections: How It Works: In a series connection, solar panels are connected end-to-end, with the positive ...



How to Connect Solar Panels in Series and Parallel

Connecting solar panels in parallel. Add up to combined power = $150W + 150W + 150W + 150W = 600W$. Whenever you connect with each other a 60W solar panel to a 100W panel in series, the gross hooked up ...



A Step-by-Step Guide to Wiring Solar Panels in Parallel: Diagram ...

In a parallel wiring configuration, each solar panel functions independently, and the total voltage output is equal to the voltage of a single panel. This means that if you wire four 12V solar ...

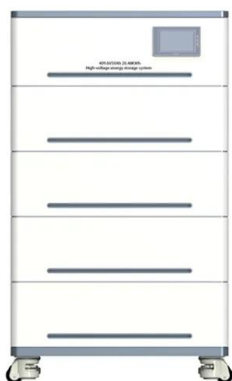


Ultimate Guide to Solar Panels in Series vs. Parallel

The current of each solar panel is added together when wired in a parallel solar panel arrangement. Series VS. Parallel: Parts List. There are a few factors to consider when deciding whether to wire solar panels in series ...

Solar panel strings: Parallel & Series explained

You repeat that for as many panels as you have and then connect the strings together in parallel. For example, if you had 6 panels with $V_{mpp}=22.5$, $I_{mpp}=5.75$ and an ...



Should you put your solar panels in series or parallel?

Most solar panel systems feature both connections. As well as knowing the best angle and direction for solar panels, Solar panels are wired to each other in two ...



Mixing solar panels - Dos and Don'ts

Connecting more than one solar panel in series, in parallel or in a mixed-mode is an effective and easy way not only to build a cost-effective solar panel system but also helps us add more solar ...



Solar Panels in Parallel: How to Connect for Maximum ...

Learn how to connect solar panels in parallel to increase current output while maintaining a constant voltage. Key takeaways: Connecting solar panels in parallel increases current output. Parallel connections are ideal for lower ...

Connecting Solar Panels in Series or in Parallel?

Yes, many large solar panel installations combine series and parallel wiring in one array to maximise the product of each group of panels. It's possible to strike the optimal balance between series and parallel wiring by ...



GRADE A BATTERY

LiFePO4 battery will not burn when overcharged or discharged, overcurrent or short circuit and can withstand high temperatures without decomposition.



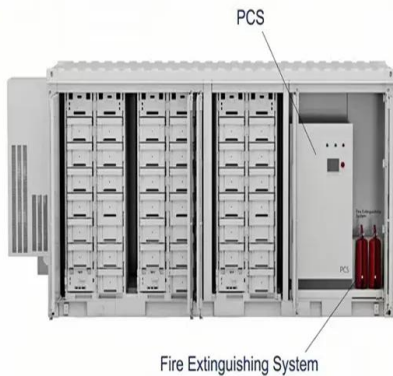
Wiring Solar Panels in Series vs Parallel: Which Is Better?

Should I install my solar panels in series vs parallel? How you choose to wire your solar panels depends on your installation design (where the panels and inverter be installed), whether you're connected to the grid or not, ...



Solar Panel Connection

Connecting two portable solar panels, or any other type of solar panel, (same wattage) in parallel will multiply the total power output current by 2 and keep the system voltage at the same level. ...



Should I connect my solar panels in series or in parallel?

Mixing Solar Panel Sizes. In a perfect world, all solar panels in system would be identical in size and produced by the same manufacturer. Unfortunately, this is not usually ...

Solar Panels in Parallel: How to Connect for Maximum Efficiency

Advantages of Parallel Solar Panel Connections. Wiring solar panels in parallel boosts energy resilience--imagine a team where if one player trips, the others pick up the slack. Each panel ...



Solar String Expansion. Panels Connection Parallel vs Series

Connecting Different Spec Solar Panels in Parallel. Mixing panels with different currents but equal voltages can work well when wiring them in parallel. When connected in ...



Series vs Parallel Solar Panel Wiring Basics: Volts, Amps, Costs

Using the same example of wiring together six 200W solar panels, wiring them in parallel would give you 25 volts and 60 amps (since each panel's 10 amps are added ...



Series, Parallel & Series-Parallel Connection of PV ...

Solar Module Cell: The solar cell is a two-terminal device. One is positive (anode) and the other is negative (cathode). A solar cell arrangement is known as solar module or solar panel where solar panel arrangement is known as ...

Wiring Up Solar Panels: Series, Parallel, or Series ...

Solar Panel Wiring. $48.6V + 48.6V + 48.6V = 145.8V$ would be the resulting system open circuit voltage for the three panels. Wiring in Parallel . The next method of wiring solar panels is in parallel. In this configuration, all ...



Connecting Solar Panels in Series or in Parallel?

Parallel wiring increases the sum output amperage of a solar panel array while maintaining the same voltage. The choice you make can have a significant impact on your system's overall performance. For the purposes of ...



Contact Us

For catalog requests, pricing, or partnerships, please visit:
<https://www.vdbconstruction.co.za>