

# **3 bag power flow material collection system**





## Overview

---

What is the X700 power flow material collection system?

The 14-bu (493-L) 3-Bag Power Flow Material Collection System increases the versatility of X700 Series Tractors equipped with a 48-in. (122-cm)\*, 54-in. (137-cm), or 62-in. (157-cm) Convertible or Edge™ Xtra Mower, the 54-in. (137-cm) or the 60-in. (152-cm) high capacity (HC) or the 60-in. (152-cm) 7-Iron™ Mower.

What is a material collection system Hopper attachment?

The material collection system hopper attachment that efficiently collects material from the mower deck, offering efficient bagging performance, clean.

How does the mc2120 material collection system work?

With the MC2120 Material Collection System, the material is transferred from the high-performance steel blower into the hopper with a total capacity of 705 L (20 bu). The hopper with effortless Dump-from-seat (DFS) is simply executed with the press a button. NOTE: For the DFS, a dedicated wiring harness connects the MC2120 to your tractor.

What is the capacity of a click-n-Go Bagger?

The large, 14-bu (493-L) capacity means the operator can collect a large area of grass or leaves before needing to stop to empty the bags. Click-N-Go brackets must be ordered separately. Front ballast is recommended to counterbalance the rear bagger:.

How do I store the material collection system?

To store the Material Collection System, two integrated steel storage stands make attaching and detaching quick and easy. An optional caster wheel kit for the stands is the solution to further simplify maneuvering during attachment, detachment, and storage. The wheels enable the hopper to be put into tight spaces for better storage.



## 3 bag power flow material collection system

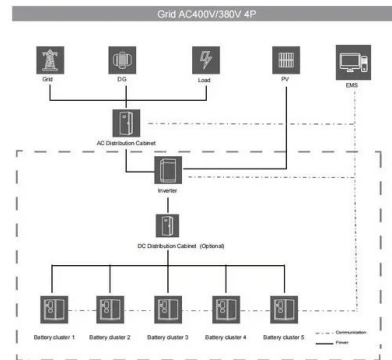


### BUC10288: Material Collection System, 2-Bag Attachment

BUC10288: Material Collection System, 2-Bag Attachment Part Number: BUC10288 Efficient Material Collection: The 6.5-bushel hopper, chute, and Power Flow blower provide an efficient means of collecting grass clippings and leaves, ensuring a clean and tidy

### 3-Bag Power Flow Material Collection System

I broke down and purchased the Power Flow bag system last October so only had a short time to use it before snow hit the ground. Works fantastic picking up the leaves and anything else that I happen to run over. The one thing I can't live with though is it is not



### Need advice for installing PWRFLO & 3-bagger on my 445

1 and 2-Bag Power-Flow Material Collection System\_ Introduction.pdf 214.6 KB Views: 660 JD 455 3pt, rear pto, Ruegg drawbar, QH, 47 2S blower, 54 deck JD 455 3 pt rear pto 60 deck 450 tiller,

### John Deere Three-bag Material Collection System

The John Deere three-bag Material Collection System (MCS) is compatible with all gas-powered commercial zero turn mowers. It features an improved design for more efficient material collection and superior performance. Features



include: Location of blower



Triple Bagger, Power Flow and Chute

The 14-bu, 3-bag Power Flow Material Collection System increases the versatility of the X500 Multi-Terrain Tractors and the GT and GX Series garden tractors equipped with a 48-in. Power ...

**2-Bag Material Collection System for 42-Inch, 48-Inch, and 54 ...**

Safety Label Location - Material Collection System APY538261--UN--01JUN22 A--READ OPERATOR'S MANUAL (M169457) B--WARNING (M149489) vs70618,1653302052199-19-19JUL22  
Safety Label Location - Power Flow High Performance Do not



**BUC11344: Material Collection System, 48A , Shop ere**

BUC11344: Material Collection System, 48A Part Number: BUC11344 Efficient Material Collection: 6.5-bu (229-L) capacity bags for thorough material collection. Reduced Plugging: Power Flow blower and large exit duct reduce plugging for uninterrupted operation.



## John Deere Three-bag Material Collection System

The John Deere three-bag Material Collection System (MCS) is compatible with all gas-powered commercial zero turn mowers. It features an improved design for more ...

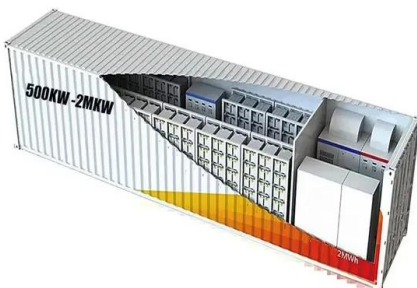


### 1 BAG, For 2 BAG

Mower Decks and Material Collection System for 325, 335, 345 and 355D Tractors - PC2924 X744 - ATTACHMENT, MOWER DECKS AND 2 & 3 BAG POWERFLOW MATERIAL COLLECTION SYSTEM POWER FLOW BLOWER ASSEMBLY (X400, X500

## Commercial Lawn Mower Attachments & Accessories

Three-Bag Material Collection System The three-bag material handling system (MCS) is designed to remove all of the material from the mower and provide complete lawn cleanup in one pass. Leaves and clippings flow smoothly from the blower to the hopper through a large, 6-in. (15-cm) diameter discharge hose.



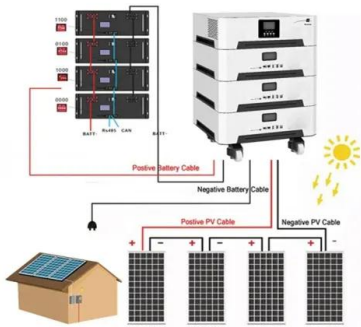
### COMPACT UTILITY TRACTORS

Material Collection System (MCS) The 3-Bag Power Flow has a 14-bushel capacity that can be easily removed to spread clippings in a compost area or transfer to a bag for removal. The chute connecting the Power Flow to the hopper comes with a fill



## John Deere Material Collection System BM23634

John Deere 6.5-bushel 2-Bag Material Collection Hopper Assembly This item ships via truck freight due to the size and weight. Shipping charges are determined at checkout prior to placing your order. The 6.5-bu (229-L) rear ...



## 3-Bag Power Flow Collection System for 1023E/1025R 54D Deck

This attachment utilizes high-performance power flow that is belt driven off the mower deck for material processing. Santa's coming to Rogers. Click for details! My Shopping Cart My Account MyME Menu Home / New Equipment / Compact / Utility Tractors / / 3

## BM20671: Material Collection Hopper Attachment, 3 Bag, 14 Bushel

The material collection system hopper attachment that efficiently collects material from the mower deck, offering efficient bagging performance, clean operation, and easy-to-empty bags



## John Deere Unveils New 3-Bag Material Collection System

John Deere announced that they've expanded their mower attachment lineup with a new 3-bag Material Collection System (MCS). This new bagging system is compatible with all Z900 mower models and features an improvement to John Deere's previous designs for material collection.



## INSTALLATION INSTRUCTIONS 14 bu Material Collection System ...

7 14 BU MATERIAL COLLECTION SYSTEM  
Preparing the Machine 1. Open the hood and remove bags. Slide the bin in place on the frame and mark holes (A). Remove the bin and drill 11/32" holes sideways through the steel frame and plastic. Slide the bin back



### ARIMain

Hopper Top, 3-Bag Material Collection System, 48A / 54A inch Jacksheave, Idlers and Belt, 54A inch John Deere Three-Bag Powerflow Material Collection System Power Flow, 48A inch Zoom Image Tag Part # Description Price Qty 1 JDGX25677 ARI Sku

### 48C

Blower Housing (54C) 60 Three-Bag Powerflow Material Collection System 48C - ATTACHMENT, MOWER DECKS AND 2 & 3 BAG POWERFLOW MATERIAL COLLECTION SYSTEM POWER FLOW BLOWER A EPC John Deere online CCE 19M7867 0



## INSTALLATION INSTRUCTIONS 6 bu Material Collection System ...

cleanly dump grass clippings onto a pile. This Material Collection System is compatible with all 6.5 bushel 2 bag units for the 100 series tractors starting model year 2021. Fits on Deere collection system attachment numbers BUC10284, BUC10286 and BUC10288.



### John Deere 3 Bag 14 Bushel Power Flow Bagger for X400/X500 ...

The 14-bu (493-L) 3-Bag Power Flow Material Collection System increases the versatility of X700 Series Tractors equipped with a 48-in. (122-cm)\*, 54-in. (137-cm), or 62-in. (157-cm) ...



### MCS

1 and 2-Bag Power-Flow Material Collection System CCE 580H and 580L Material Collection System (MCS)(applies to X740,X748 Tractors and 2320,2520,3320,3520 AG CCE 580H and 580L Material Collection System (MCS)(applies to X740,X748 Tractors and

### John Deere 14-Bushel 3-Bag Rear Bagger Hopper ...

John Deere 14-Bushel 3-Bag Rear Bagger Hopper Assembly. The 14-bu (493-L) 3-Bag Power Flow Material Collection System increases the versatility of X700 Series Tractors equipped with a 48-in. (122-cm)\*, 54-in. (137-cm), or 62-in. ...



### John Deere 3 Bag 14 Bushel Bagger for Power Flow Units BM21680

Amazon : John Deere 3 Bag 14 Bushel Bagger for Power Flow Units BM21680 : Patio, Lawn & Garden Skip to main content sevenscow AM122416 Grass Bags 2pcs AM101602 Collection Systems for John Deere 100 105 110 115 120 125 130 135 4.0



[John Deere MCS Hopper Attachment](#)

The New MCS 14 Attachment is designed to provide dump from seat grass collection/expulsion for all John Deere 3 Bag Material Collection System (MCS) on the X500 and X700 Series tractors. The MCS Attachment eliminates the need to get off of the tractor and empty the bags, as a result it will increase both efficiency and cleanliness in the mowing process.



[John Deere 3 Bag Rear Hopper for MCS BM20671](#)

John Deere 3 Bag Rear Hopper for MCS BM20671 Due to the size of this item, it must ship via truck freight & ships only in the contiguous USA. Shipping charges are determined at checkout prior to placing your order. John Deere 14-Bushel 3-Bag Rear Bagger Hopper Assembly The 14-bu (493-L) 3-Bag Power Flow Material Collection System increases the versatility of X700 Series ...

**Power Flow Material Collection System for X590**

I have a power flow for my 345 7.5 bushel (2 bag) and it takes about 8-10 min to put on with coffee and 2-3 min. off. No the deck doesn't need leveling each time. Tom 2019 X590 with power mulch control and PF bagger 30" mechanical tiller 02 X595 with 62" deck



[Material Collection system for the JD1023e](#)

Keep in mind a 21-22" push mower and your 1023 with a 60 or 54" deck is two totally different things in my opinion. I wouldn't even compare the two collection systems . I ...



### BUC10856: 3-Bag Material Collection System, 12 Bushel

BUC10856: 3-Bag Material Collection System, 12 Bushel Part Number: BUC10856 Streamlined Cleanup: The Material Collection System (MCS) simplifies lawn care by effectively gathering grass clippings, leaves, and debris, ensuring a pristine and well-maintained landscape.



**5 Years warranty**



### [MC2120 Material Collection System](#)

Whether you're collecting grass clippings in the summer, pine needles, or gathering leaves in the fall, the Frontier MC2120 Material Collection System greatly enhances your productivity. The ...

### John Deere 3 bag, 14 bushel Power Flow Bagger

I have a BRAND NEW, NEVER USED John Deere 3 bag, 14 bushel Power Flow Bagger system for sale. It was already installed on my new John Deere 1025r when I picked it up yesterday. If man had enough horse sense to treat his wife like a Thoroughbred, she'd

**114KWh ESS**



### How-to Install the Material Collection System

Using a Material Collection System or a bagger can help you collect clippings and help you maintain your lawn all season long. This video shows you how to in Using a Material Collection System



### TCA17370: 3 Bag Grass Bagger W/ Handle , Shop here

Compatibility: Designed for use with various John Deere Material Collection Systems, including Power Flow and Rear Grass Bagger, for efficient lawn debris collection. Effortless removal: Bags can be easily removed without unlatching or lifting, ensuring a hassle-free experience during lawn maintenance tasks.



## Contact Us

---

For catalog requests, pricing, or partnerships, please visit:  
<https://www.vdbconstruction.co.za>