

3dr solo power module





Overview

How does the 3DR solo app work?

1.1.3 The “3DR Solo” app outputs a live video stream from an onboard GoPro® camera to an Android or iOS device. The app allows you to view the live video with overlaid telemetry and access a simplified graphic interface for controlling Solo’s advanced functions. Motors and Propellers Solo’s arms are labeled one through four on the ends of the arms.

How to get telemetry from 3DR solo?

3DR Solo uses smart BMS in each Solo battery which will give battery telemetry to Solo and ground station. There are different ways to get this information. a) Don’t have telemetry: Solder the battery connectors directly to the Solo board. You need then to use a LiPo alarm and/or timer. It works but it is not what we want.

How do I contact 3DR support?

Support 3DR Support is here to help you get the most out of Solo. If you have any questions, please contact us at support@3dr.com or give us a call at 1 (855) 982-2898 (toll free in the US and Canada) or direct at +1 (858) 225-1414. Solo and connect the app to Solo Wi-Fi.

How do you Power a solo smart battery?

As a lithium polymer battery, the Solo Smart Battery requires specific. Powering To power Solo, insert the battery into Solo’s battery bay and slide the battery forward until it clicks into place. Press and hold the battery power button to turn on Solo.

How do I calibrate a 3DR solo?

If you have any questions, please contact us at support@3dr.com or give us a call at 1 (855) 982-2898 (toll free in the US and Canada) or direct at +1 (858) 225- 1414. Solo and connect the app to Solo Wi-Fi. Select Level Calibration



from the Solo menu, and follow the prompts to place Solo perfectly still on each side in turn.

How do I update my 3DR controller?

For Android, you must also install the “3DR Services” app to your device. Ensure that both the controller and Solo are powered, the controller has at least 50% battery remaining, and the app is connected to Solo Wi-Fi. The total update process can take up to 10 minutes.



3dr solo power module



3DR Solo Review

Review of 3DR Solo powered by the Slant community. Specs Update Weight 3.3 lbs. (1.5 kg) / 3.9 lbs. (1.8 kg) This issue is likely due to the positioning of the module. Instead of having a small mast on top of the drone for GPS and dual GPS modules (one

3DR Solo with Lilon 9000mAh battery , up to 30min flight time

For me the power module is the best solution. I have an original Solo battery with 75% (3900mAh) capacity left. Compared with the Lilon batteries it does not make much sense to use it. I could take it a part and make normal 4S battery out of it. For now I keep it



3DR Solo with Lilon 9000mAh battery , up to 30min flight time

With the original BMS you can charge any 4S battery of any size that supports 3.4A charging current up to 4.2V per cell. What this means is lets says you have 6 Lilon ...



Modifier les batteries du SOLO 3DR - DOMOTICS

d) Utiliser un module d'alimentation: Un power module permet d'utiliser n'importe quelle batterie et d'utiliser vos propres paramètres de RTL. Il n'y a pas de limite de 5200mAh. Et cela économise du poids.



OEM service

Hot Colors:



Color can be customized
more questions just do not hesitate to contact us

LOGO Position: (Screen printing)



UBlox GPS + Compass Module -- Copter documentation

Distance the module from DC power wiring and the batteries by at least 10cm. Use of a GPS mast is highly recommended. Place the module clear of nearby iron containing metallic objects. (Use nylon or non magnetic stainless steel hardware and nylon or

[3DR Pixhawk Mini · PX4 User Guide](#)

The Quad Power Distribution Board includes a power module (PM) that is suitable for batteries

12.8V 100Ah



Buy APM Pixhawk Power Module with BEC 3A XT60 Plug Online ...

This is dean type connector Pixhawk Power Module 6-28V 90A. Buy NOW at India's Best Online Shopping The Power Module is only designed to power APM, an RC receiver, and APM accessories (GPS, 3DR radio). It is not designed to power the servos



CAN Power Module , High-Accuracy UAV Power ...

Ensure precise and reliable power monitoring for your UAV with the CAN Power Module. Featuring the ACS37800 sensor and supporting up to 12S LiPo, it provides high-accuracy power management with integrated CAN connectivity.

...

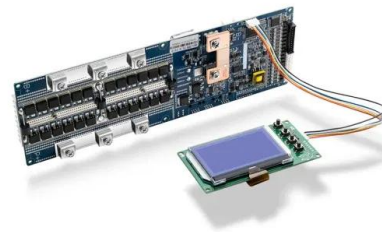


Charging the 3DR Solo Battery with a DC-DC Constant Current ...

The DC Power supply, AC cords, and step-up modules are found on Amazon. This is an alternative to the overpriced 3DR Solo Battery Charger, and you will save The DC Power supply, AC cords, ...

[Common Power Module -- Plane documentation](#)

Warning The Power Module provides enough power for the autopilot, receiver, and a few low powered peripherals (lidar, telemetry) but does not have enough power for servos or high current devices like FPV transmitters or the RFD900 radios. More information on powering the Pixhawk can be found [here](#)



3DR Solo Drone: Unlock the Power of Smart Aerial Filming

Introduction to the 3DR Solo Drone If you're diving into the world of drones, the 3DR Solo Drone is a name that might have already crossed your radar. This drone, released in 2015 by 3D Robotics, was a game-changer back in the day and still has its niche fans today.



3DR Solo with Lilon 9000mAh battery , up to 30min flight time

d) Use a power module: A power module allows to use any battery and to use your own RTL parameters. There is no 5200mAh limit. And it saves weight. The Solo BMS with connector weighs around ~60g. The power module only ~20g. This is my preferred



TAX FREE

1-3MWh
BESS

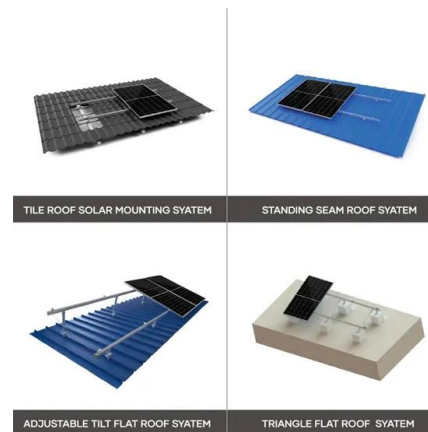


3DR Power Module

Hello, For testing purposes, I've my power module connected to regulated power supply and the 6 pin cables is connected to an Arduino Uno (Analog pin), I'm trying to measure voltage value like this, What would be the code to convert the analog value (ranging from 0-1023) to a voltage? Also the analog value I'm getting is scattered all over the place for a stable ...

[Common Power Module -- Copter documentation](#)

The Power Module provides enough power for the autopilot, receiver, and a few low powered peripherals (lidar, telemetry) but does not have enough power for servos or high current ...



3DR SOLO USER MANUAL Pdf Download , ManualsLib

10 Appendix 10.1 Specifications Solo is a quad-rotor aerial vehicle powered by the 3DR Pixhawk 2 autopilot system and APM:Copter flight control software. Solo communicates with the controller and Solo app over the 3DR Link secure Wi-Fi ...



3DR Solo now with RTK !

Upgrade your solo with the last u-blox module for 3DR SOLO. Key features: Ublox NEO-M8N or NEO-M8T Plug and play on 3DR SOLO Antenna patch Power filter, ESD protection, overvoltage protection Receiver type: 72-channel GPS, GLONASS, BeiDou



3DR Solo with Lilon 9000mAh battery , up to 30min flight time

I have a power module that came with my green cube, however the power module mod you have to solder in to some pins off of where the pixhawk seats in Is there an easier way? Unfortunately no. I dont see one. Not with 3DR Solo

Digging into 3dr radio power

hello all .I have read the wikis and operated mission planer on apm 2.6 copter but am falling into the love of the 3dr telemetry thing I ordered and operated it 100mw module but am curious and even my search got me more not understanding the topic?! the tx power on air and ground ...in the mission planner the max power is 20db how come we see 1w 433 3dr ...



3DR CAN POWER MODULE

The 3DR CAN Power Module is a cutting-edge solution designed to provide reliable and accurate power monitoring for UAV systems. Built around the ACS37800 power monitoring IC, this module delivers 0.85 mΩ primary conductor resistance, minimizing ...



3DR Solo Power Adapter Board - BrownieBoards Store

3DR Solo Power Connector - Molex 46436-9202 \$ 3.50 Add to cart 3DR Solo SyncLight Breakout Board \$ 15.00 - \$ 23.00 Select options This product has multiple variants. The options may be chosen on the product page 3DR Solo ...



3DR Solo

+ power module + 2x Li-ion 9000mAh battery, + HERE 1 GPS on mast What's in progress: + FF sensor camera + brushless 2-axis gimbal, Future plans: + Arducopter Autotune (3DR Solo calibration), + remote camera setting change + triggering Content:

[Repurposing a 3DR Solo Cube 2.0](#)

I recently bought a MiniCube carrier, and I was trying to repurpose an original 3DR Solo Cube 2.0. I have the mRo telemetry, power module, SBUS receiver all working and all sensors calibrated. I have successfully installed both PX4 1.8.2 and Arducopter 3.6.7 firmware. The only issue is the GPS. I have tried several known working M8N units, even the original M7N ...



Power Monitor/Module Configuration in Mission Planner

The Sensor selection list offers a number of Power Modules (including popular models from 3DR and AttoPilot) which you can select to automatically configure your module. If your PM is not on the list then you can select Other, enter its recommended values, or perform a manual calibration as described below.



3DR Pixhawk-APM????????????????

????????????????3DR Power
Module???4??(4S)???????????????? GPS
?????????Pixhawk 2?????Solo????????????????
????????????????????



Power Monitor/Module Configuration in Mission Planner

The Sensor selection list offers a number of analog Power Modules (including popular models from 3DR and AttoPilot) which you can select to automatically configure your module. If your PM is not on the list then you can select Other, enter its recommended values, or perform a manual calibration as described below.

Contact Us

For catalog requests, pricing, or partnerships, please visit:
<https://www.vdbconstruction.co.za>