

41 critical microsoft-windows- kernel-power system server 2016





Overview

This event 41 indicates that an error prevented Windows from shutting down correctly or the computer shuts down unexpectedly. Most likely caused by an interruption in the power supply issues, driver issues, overheating, faulty ram modules, or a hardware problem. Try updating the graphics, chipset, sound, and network drivers. What is kernel power event ID 41?

When a Windows-based computer starts, a check is performed to determine whether the computer was shut down cleanly. If not, a Kernel Power event ID 41 message is generated. An event ID 41 is used to report that something unexpected happened that prevented Windows from shutting down correctly.

What is critical kernel-power event 41 error XML?

For the past month and a half, their secondary server will experience a sudden shutdown and generate the Critical Kernel-Power Event 41 Error in event viewer. This has been happening once every two weeks exactly. Here is the interesting part of the XML: Checked the power settings to make sure the hard drive will not sleep, nor will the server.

What happens if a computer restarts and generates event ID 41?

The computer restarts and generates Event ID 41, but the BugcheckCode and PowerButtonTimestamp values are zero. In such cases, something prevents Windows from generating error codes or from writing error codes to disk.



41 critical microsoft-windows-kernel-power system server 2016



Kernel Power 41

Kernel Power 41 - O sistema foi reiniciado sem um desligamento correto primeiro. Esse erro pode ser causado quando o sistema para de responder, trava ou fica sem energia inesperadamente. Meu PC estava apresentando reinício aleatório, resolvi formatá-lo para ver se essa situação parava, entretanto, sem sucesso.

[Kernel Power Critical Error, event id 41](#)

Windows is up to date and I have updated all of the drivers (I think) that I can. I have also enabled the kernel dump feature in the system protection settings and, as of yet, no dump file has been created by any of these events (13 in the last 7 days - 5 today).



I am getting Kernel Power 41 Critical Error on Windows 11 after

Kernel Power 41 Critical errors are usually caused by a power problem, possibly the PSU on your PC. Please check to see if your PC is producing any minidump files, I will check those to see if they provide any insight into a potential cause of the system crashes.

Solved: How to fix Kernel-Power Event ID 41 Critical Error on Windows

The Kernel-Power Event ID 41 is a critical system issue that can cause your Windows computer to shut down abruptly, seemingly without any apparent reason. In this blog, we'll guide you through five easy steps to resolve this issue and



prevent your computer from crashing unexpectedly.



Id. de evento 41 El sistema se ha reiniciado sin ...

Id. de evento 41: este evento indica que Windows se ha reiniciado sin un apagado completo. Id. de evento 1074: este evento se registra cuando una aplicación es responsable del apagado o reinicio del sistema. ...

[SOLVED] PC Randomly Shuts Off (Critical Error: Kernel-Power)

Roughly around after I upgraded from Windows 10 to Windows 11, my PC has been randomly shutting off. I would also like to note that before having this issue, I also installed an additional SSD (for game storage) and an HDD (for misc storage), my OS drive has been completely untouched. The PC



Como resolver o erro Kernel-Power no Windows 10

Estou enfrentando problemas de reinicialização do sistema a cada 10/15 minutos, chequei os logs do sistema e verifiquei o seguinte erro. Nome do Log: System Fonte: Microsoft-Windows-Kernel-Power Data: Assédio é qualquer comportamento com a intenção de



Event ID 41 The system has rebooted without cleanly

?????(Kernel-Power 41 (63) error)?????
????????????,???,?????????
????????,?memtest???. ?????? ...



Server experiencing Kernel-Power Event 41, but only once every ...

For the past month and a half, their secondary server will experience a sudden shutdown and generate the Critical Kernel-Power Event 41 Error in event viewer. This has ...

Error critico Kernel Power

Buenas tardes, al estar trabajando normal se me tilda la compu por unos segundos y me aparece pantalla azul, al reiniciar y entrar en el visor de eventos me sale este error: Nombre de registro: System



[Help to resolve] Microsoft-Windows-kernel-power critical error

My server running windows server 2012 R2 now keep crashing, im checked Event ID with critical error: Microsoft-Windows-kernel-power Show details: - System - Provider ...



ID d'événement 41 Le système a redémarré sans ...

Event ID: 41 Description: The system has rebooted without cleanly shutting down first. Cet événement indique qu'une activité inattendue a empêché Windows de s'arrêter correctement. Un tel arrêt peut être dû à une ...



?????????:[Microsoft-Windows-Kernel-Power ????

??
[Microsoft-Windows-Kernel-Power ???ID:41] ???
??
??

[SOLVED]

So recently I've been experiencing a lot of crashes, originally the crashes I linked to were from a cooler going up but just enough to slowly allow my cpu to overheat until crash, since then this has been resolved and most of the crashes have gone away. Now I'm still experiencing crashes after a



Ereignis-ID 41 Das System wurde neu gestartet, ohne

Der Fehler Kernel Power-Ereignis-ID 41 tritt auf, wenn der Computer heruntergefahren oder unerwartet neu gestartet wird. Wenn ein Windows-basierter Computer gestartet wird, wird überprüft, ob der Computer ordnungsgemäß heruntergefahren wurde.



How to solve the The Kernel-Power error (ID 41) ?

Log Name: System Source: Microsoft-Windows-Kernel-Power Date: 2/6/2022 12:01:23 PM Event ID: 41 Task Category: (63) Level: Critical Keywords: (70368744177664), Description: The system has rebooted Harassment is any behavior intended to disturb or upset



LFP 280Ah C&I

Error Critico Kernel Power ID 41 renicio de maquina sin

Acoso es cualquier comportamiento con la intención de alterar o enfadar a una persona o a un grupo de personas. Las amenazas incluyen cualquier amenaza de violencia o daños a otra persona. Cualquier contenido de un tema para



System Restarting Unexpectedly-Critical Event ID 41 from Kernel-Power

Kernel-Power Event ID 41 does indicate that the system restarted without shutting down completely. You have taken many effective steps to troubleshoot the problem. Regarding your issue, the old WIFI driver may indeed cause system instability, but ...



[Resolved] Kernel Power 41 Critical Error on Windows 10/11

Recent Posts Snapchat not working on Wi-Fi in iPhone: Fix Apple Pencil not working or charging: Fix Stuck on preparing video after editing and saving in iPhone: Fix Attention Aware feature is greyed out in Settings in iPhone: Fix iPhone alarm goes off when I touch





Encontrou o Erro Kernel Power 41 no Windows 10/11? Veja Aqui ...

Se você encontrou o erro kernel power 41 no Windows 10/11 e está em busca de alguns métodos para se livrar dele, leia esta postagem com atenção. Se você encontrou algum problema com o seu hardware, resolva-o. Após certificar-se de que todo o seu



Home Energy Storage (Stackble system)



High Efficiency Easy installation Safe and Reliable Perfect Compatibility

Product Introduction

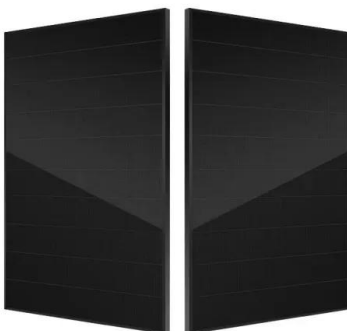
- Scalable from 10 kWh to 50 kWh
- Self-Consumption Optimizer
- Integrated with inverter to avoid the compatibility problem
- LFP battery, safest and long cycle life
- Stackable design for easy installation
- Capable of High-Powered Emergency-Backup and Off-Grid Function

How to Fix a Windows Kernel Power Error in 5 Easy Steps

5. Run CHKDSK and SFC CHKDSK is a Windows system tool you can use to verify your Windows 10 file system. You can add specific options to find and fix faults as the tool runs. Run it from the Command Prompt, and use the CHKDSK scan to find the problem and fix your machine.

How To Fix Windows Kernel Power Event ID 41 Error

In This Tutorial How To Fix Windows Kernel Power Event ID 41 Err #Kernal #EventID41 #CriticalErrorHii Friends Welcome Back My Channel MK Tech . This Tutorial How To Fix Windows Kernel



Zdarzenie 41, Kernel-Power

Zdarzenie 41, Kernel-Power Witam, Otóż od juz dluzszego czasu komputer zdarza mi sie sam wylaczac. Sadzilem, ze to wina zasilacza, lecz jednak problem nadal wystepuje. W dzienniku zdarzen pokazuje mi, ze jest to blad krytyczny Kernel-Power. Ponizej



Kernel Power critical errors

Event 41 Kernel-Power task 63 keywords 70368744177664,(2) Event 172 task 203 keywords 1024,(4) Win 11 clean install build 22000.675 on a Aorus x570 pro wifi board rev 1.0, AMD Rizen 7 3800x, EVGA Geforce rtx 2070 super, 32 gb Gskill Ripjaw mem



Kernel Power (Erreur Critique 41)

Kernel Power (Erreur Critique 41) Le système a redémarré sans s'arrêter correctement au préalable. Cette erreur peut survenir si le système ne répond plus, s'est bloqué ou n'est plus alimenté de façon inattendue.

Kernel Power Error 41: 8 Easy Ways to Fix It

Fix all your driver issues with PC HelpSoft Driver Updater: Easily update and fix driver issues on your PC in just three steps with PC HelpSoft Driver Updater: Download and install PC HelpSoft Driver Updater. Scan your PC to find outdated or missing drivers. Click on



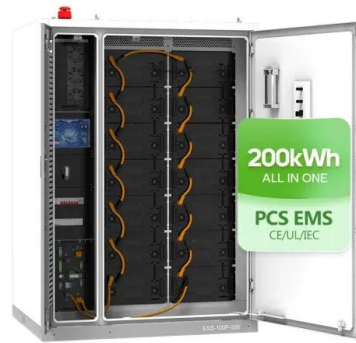
Event ID 41 Kernel Power Issue

Hi Jan, thank you for replying. I always make sure all of my drivers, windows, even BIOS are updated from Windows Update and Lenovo Vantage (I'm using Lenovo Legion 5). I've done all the advice except for boot in safe mode. The last time I did that, my laptop went



Server Keeps Restarting

Hello @Kelvin Kamachu First of all I would recommend to update all the firmware drivers, and check for any Power Plan settings that might make the computer to lose power or enter an unauthorized sleep state. Additionally, Please check in System Event



Event ID 41, Source: Microsoft-Windows-Kernel-Power

The system has rebooted without cleanly shutting down first. This error could be caused if the system stopped responding, crashed, or lost power unexpectedly. Event Xml: ...

[Event ID 41 Kernel-Power Critical Error](#)

Hi Lasse, I'm Dyari. Thanks for reaching out. I will be happy to assist you in this regard. Please go to C:WindowsMinidump and copy any minidump files you find to your desktop. Afterward, share these files through OneDrive or Google Drive so we can analyze



Contact Us

For catalog requests, pricing, or partnerships, please visit:
<https://www.vdbconstruction.co.za>