

45 square meters of solar panels for power generation





Overview

Wattage is the output of solar panels that is calculated by multiplying the volts by amps. Here, the amount of the force of the electricity is represented by volts. The aggregate amount of energy used is expressed in amps (amperes). Output ratings on most solar panels range between 250 watts to 400 watts.

Here, a kilowatt-hour is the total amount of energy used by a household during a year. The calculator used to determine the solar panels kWh needs the.

To consider the kilowatt required by the solar system, you need to use the average monthly consumption. Suppose you use 1400 kilowatt-hours per month, and the average sunlight is 6 hours. Now using the calculation, $1400 / 6 * 30 =$.



45 square meters of solar panels for power generation



How much does a solar panel cost per square meter and what is the power

The price of a solar panel is about \$200 per square meter, and the efficiency of a typical solar cell is about 11%, which is about 14W per square meter under the sun on a ...

[Power Per Square Meter Calculator](#)

Calculating power per square meter is a fundamental concept in various fields, offering a way to assess energy distribution over a given area. For instance, if a solar panel ...



How much electricity can one square meter of solar panels ...

The method for calculating the power of a solar panel is as follows: length * width * solar cell conversion efficiency * 0.1 = power (in centimeters). So, how much electricity ...



How much irradiation from the sun is required to generate solar power?

Solar Irradiance. The amount of energy striking the earth from the sun is about 1,370W/m² (watts per square meter), as measured at the top of the atmosphere. This is the ...

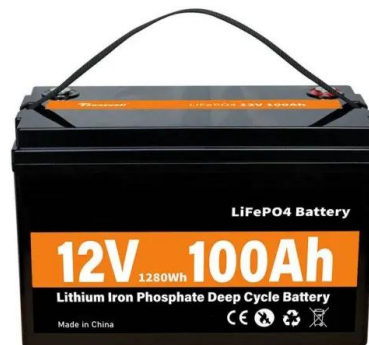


Solar Panel Output: How Much Power Does a Solar Panel Produce...

On average, solar panels designed for domestic use produce 250-400 watts, enough to power a household appliance like a refrigerator for an hour. To work out how much ...

Solar Panel Sizes and Wattage Explained

It focuses on maximum electricity generation and overall capacity rather than the quantity of panels. a 6.6 kW solar system typically consists of 20 panels each delivering ...



12V 10AH



Types of Electric Meters for Solar

Different electric meters, such as net, smart, and bi-directional meters, are essential for accurately measuring electricity consumption and solar power generation in solar energy systems. ...



How to Calculate Solar Panel KWp (KWh Vs. KWp + Meanings)

1. Find the total solar panel area (A) in square meters by multiplying the number of panels with the area of each panel. 2. Determine the solar panel yield (r), which ...



How much Space do I need for Solar Panels? UK Guide 2024

Estimated electricity generation (kWh/square foot/year) = (Solar irradiance per square meter) x (Panel efficiency) x (Conversion factor)
Conversion factor: To convert square ...

How Much Power Do Solar Panels Produce Per Square Meter?

The average solar panel has an input rate of roughly 1000 Watts per square meter, while the majority of solar panels on the market have an input rate of around 15-20 percent. As a result, ...



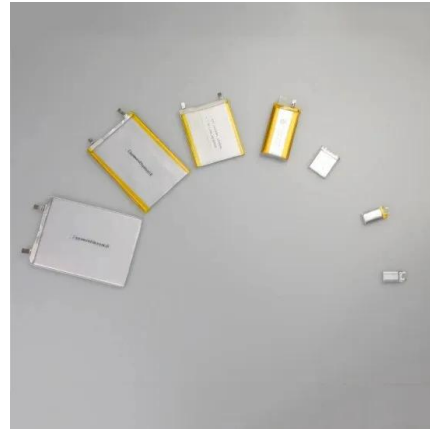
How Much Solar Power Can My Roof Generate?

So with a north/south roof, that gives you 850 square feet. 400-watt solar panels that are 20 square feet in size: This is the most frequently quoted panel power output on EnergySage. 1.3 production ratio: This is the ...



How Many Solar Panels Do I Need To Power a House?

The goal of most solar projects is to offset your electric bill 100%, so your solar system is sized to fit your average electricity use. Here's a basic equation you can use to get ...



[Solar Panel Watts Per Square Meter Explained](#)

Learn how to measure solar panel efficiency using solar panel watts per square meter with this comprehensive guide. Skip to content. Solar Earth Inc. SAVE 90%. GET A FREE ESTIMATE (805) 691-8000. SAVE 90%. higher W/m ...

[How to Calculate Solar Panel kWh](#)

1. Determine the Size of One Solar Panel. Multiply the size of one solar panel in square meters by 1,000 to convert it to square centimeters. Example: If a solar panel is 1.6 square meters, the calculation would be 1.6 ...



[How much energy does a solar panel produce?](#)

How much energy does a solar panel produce? As mentioned above, the two main factors that determine solar panel energy output are panel power and sunshine. In the UK, a typical solar panel has a power rating of 350W (watts), ...



Guidelines for the dimensions of solar panels

Below, we will compare low-power solar panels (330W) with high-power solar panels (490W) to understand the rooftop space occupied by photovoltaic arrays: 330W solar panel size: 1855 * 1092 * 40mm. 490W solar ...



How To Read Your Solar Panel Meter: Mastering The ...

By monitoring your solar production and usage, you can make adjustments to your energy usage and save money on your energy bills.. Types of Solar Panel Meters. There are two types of solar panel meters: Analogue Meters: ...

Solar Panels How Much Energy Do They Generate? 5 Scenarios

Estimated Monthly Generation: Approximately 216 kWh (kilowatt-hours) the potential upsides of adding more panels or incorporating energy-saving measures to maximise ...



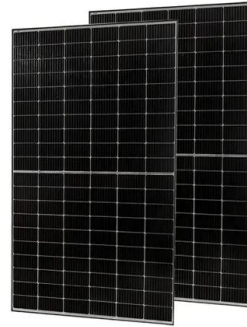
Smart Meter and Solar Panels: All You Need to Know

At the point when you introduce solar panels, your smart meter solar power can follow how much solar energy you're creating, the amount you're utilising, and how much abundance of energy ...



Solar Rooftop Calculator: How Many Solar Panels Can Fit On ...

45 Of 400 Watt Solar Panels: 1500 Square Feet Roof: 19.406 kW Solar System: 194 Of 100 Watt Solar Panels: 64 Of 300 Watt Solar Panels: 48 Of 400 Watt Solar Panels: 1600 Square Feet ...



How to Understand Solar Panel Watts Per Square Meter

For instance, if the combined size of the 20 panels is 30 square meters, the watts per square meter would be 200 (6,000 watts / 30 square meters). By calculating the watts per meter square, individuals can assess the ...



An improved model for available solar energy on Mars: Optimizing solar ...

Moving to a larger solar panel inclination of 45° shows a continuation of the trends seen in the 15° results. Fig. 6 presents further improved power generation during the ...



How Much Electricity Do Solar Panels Generate in Ireland?

The tilt of solar panels affects their electricity generation. Panels should be tilted at an angle equal to your location's latitude. In Ireland, the ideal tilt angle is around 36 ...



Solar Power Per Square Meter Calculator

How much power do solar panels produce per square meter? To answer this, there's a number of factors to consider. Table - Compare solar panel power production for ...



Calculate Solar Panel kWp & KWh (KWh Vs. KWp + Meanings)

Put simply, kWp is the peak power capability of a solar panel or solar system. Let's say 1,000-watts per square meter of sunlight is hitting your area, and if you have a 1 ...

An Essential Guide to Measuring and Monitoring Solar Power for

5 Ways To Get Started With Solar Power/Panels (RV/Camping): This article provides practical advice on setting up solar power systems for RVs and camping. It includes ...



Contact Us

For catalog requests, pricing, or partnerships, please visit:
<https://www.vdbconstruction.co.za>