

# 51 2 v lithium ion battery





## Overview

---

Is a 51.2v 100Ah battery a good choice?

A 51.2V 100Ah battery is a great choice when it comes to putting out the best and most efficient power for your application. A 51.2V 100Ah battery will last longer than other batteries on the market. Prev: What is a Flexible Battery?

.

What is a 51.2v/200ah lithium battery?

With easy installation and a simple, compact design, save the space. 51.2v/200Ah lithium batteries have many applications in real life, such as Home battery energy storage systems, Telecommunication batteries, Data center backup power supplies, etc. OEM service supported: Capacity range from 100Ah, 150Ah, 200Ah, 228Ah selectable.

Why should you choose epever 51.2v 100Ah lithium battery?

Discover the unmatched power and safety of EPEVER 51.2V 100Ah Lithium Battery. With over 4000 cycles, robust safety features, and parallel connectivity support, this battery suits various applications like home battery backup, RV, camping, and emergency power systems. Experience its reliability and high performance for off-grid usage.

Are 51 & 51R batteries the same size?

No, 51 and 51R are different battery sizes. The R in 51R stands for “reverse,” indicating that the terminal placement on the battery is reversed compared to the standard 51 size. 2. What does a 51R battery fit?

A 51R battery typically fits in smaller vehicles, such as compact cars and some sedans.

What is so-51.2v lithium iron phosphate battery system?



installation and operation and maintenance of the equipment. SO-51.2V lithium iron phosphate battery system is a standard battery system unit, customers can choose a certain number of SO-51.2V according to their needs, by connecting parallel to form a larger capacity battery pack, to meet the user's long-term power supply needs.

What is the difference between 48V and 51V batteries?

I see batteries with 48 and with 51V - they are very close only 3 V difference. Which one should I choose?

What dictates what voltage to be used?

Is 48V made out of 15 cells and the 51 of 16 cells @ 3.2V?

What good company you recommend for a power wall 5KW - being it 48 or 51V?



## 51.2 v lithium ion battery

---



### **AOLITHIUM 51.2V 100Ah LiFePO4 Lithium Battery, 2 ...**

AOLITHIUM 51.2V 100Ah LiFePO4 Lithium Battery, 2 Pack 5120Wh Built-in 100A BMS Lithium Batteries, 4000+ Cycles & 15+ Years Lifespan Deep Cycle Battery for RV, Marine, Solar Energy Storage, Camping in Batteries.

### **Vestwoods Lithium Battery 51.2 V 100Ah 5.12Kw**

Vestwoods Lithium Battery 51.2 V 100Ah 5.12Kw. Delivery Across South Africa Easy Returns . Buy Online Pay with Visa, RCS, and more. Payflex lets you get what you need now, but pay for it over four interest-free instalments. You pay 25% upfront, then three



### [51.2V 100Ah LiFePO4 Battery](#)

Our 51.2V battery, equipped with inbuilt BMS and multiple security protections, provides extended rechargeable time, longer lifespan, and economic and environmental benefits. With over 8000 charge and discharge cycles, it retains ...

### **Approved Lithium Chargers & Settings: 48V & 51V**

SECTION IV: RECOMMENDED AGS SETTINGS  
Parameter 15S/48V 16S/51V Value Starting  
Battery Voltage (30 sec) 45.80 48.80 V Starting  
Battery Voltage (15 min) 46.20 49.30 V Starting  
Battery Voltage (2 hours) 0.00 0.00 V Starting



Battery



**5.12kwh Lithium Ion Battery 51.2v 100ah (Cfe-5100s)**

The CFE-5100S Lithium Ion Battery features advanced Lithium Iron Phosphate (LiFePO4) technology, which provides superior performance, safety, and durability compared to other battery chemistries. It has a long cycle life of up to 6000 cycles at 80% depth of discharge, ensuring reliable and long-lasting energy storage.



**LVG00 48V 100Ah LiFePO4 Battery 51.2V 5Kw Lithium Battery Home Battery**

6000+ Deep Cycles Max 63 Parallel PC Monitor  
5.12Kw 48V 100Ah LiFePO4 Battery Pack Own 5120Wh energy, support 5120Wh load power, can easily power most appliances at home or outdoors. Easy-Operation ON/OFF Button & 1/3 Space Saving? LVGOO rack-mount 51.2V 100Ah, it integrates a one-touch switching button makes the conduct simple.



**48V 51.2V 52V Lithium iron ion phosphate battery ...**

48V 48VDC 51.2V 52V 51.2VDC 52VDC lithium ion iron phosphate batteries for inverter solar backup loadshedding BSL freedom Won FREE SHIPPING ON ORDERS OVER R 4 000.00 VAT Incl. (EXCL. BATTERIES AND MARINE ...



### **Vestwoods Lithium Battery 51.2 V 100Ah 5.12kW**

Introducing the Vestwoods Lithium Battery 51.2 V 100Ah 5.12kW - the perfect power solution for your energy needs. This high-quality lithium battery offers a capacity of 100Ah and an impressive power output of 5.12kW, ensuring reliable performance and long-lasting power. Ideal for a range of applications, from solar energy storage to electric vehicles, this battery is a versatile and ...



### **Comparing 48v vs 51.2v 10kw power walls. , DIY**

IME, the 48V is a nominal voltage to maintain backward nomenclature with LA packs. In reality, Li-Ion batteries charge beyond 12V, 24V or 48V. On the 48V side, most Li-Ion packs will charge to somewhere between 53V - 58V. So to be fair, I don't think it really

### [51.2V 100Ah LFP Lithium Battery](#)

Buy 51.2V 100Ah LFP Lithium Battery - LiFePO4 Battery w/ LCD Screen - 5kWh Deep Cycle Battery Pack w/ Built-In Smart BMS - Backup, Off-Grid Rechargeable RV Battery Box for Automotive & Marine Usage: Batteries - Amazon FREE DELIVERY



**51.2V 105Ah Lithium Golf Cart Battery, LiFePO4, 4000+ Cycles**

Buy ACDCev 51.2V 105Ah Lithium Golf Cart Battery, LiFePO4, 4000+ Cycles Rechargeable Battery, Built in 200A BMS with Mobile APP & Touch Monitor, Max 10.24kW Power Output, Perfect for Golf Carts: Golf Cart Accessories - Amazon FREE



[Datasheet 51.2V100Ah 3U Li-ion battery](#)

Long life type prismatic LiFePO4 cells, suitable for energy storage application. Low voltage system, safety for application. Cell certification: UN38.3, ROHS, IEC62619, UI1973 and ...



**51.2V 150AH Lithium Ion Rack Mounted Battery - Solar Equipment**

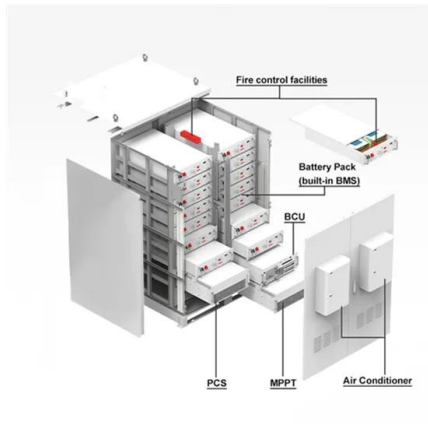
Volta Stage 1 Pro Lithium Ion Battery 5.32KWH  
51.2V 104AH R 22,770.00 R 16,799.99 26% Off-18% Synapse - Ultra Hybrid Inverter 5kW & Lithium Battery 5kW View Cart Synapse - Ultra Hybrid Inverter 5kW & Lithium Battery 5kW R 42,320.00 R 34,500.00





**LiFePO4 38120P Battery: 51.2V 10Ah (512 Wh, 60A rate ) with PCM**

15 pcs of 60mm x 20mm connection plate & 1 PCM (60A limited) Voltage. 51.2 (working) 58.4V (peak) 40 V ( cut-off) Capacity. 10Ah (512Wh) Cycle life. >2000 cycles (80% of initial capacity) ...

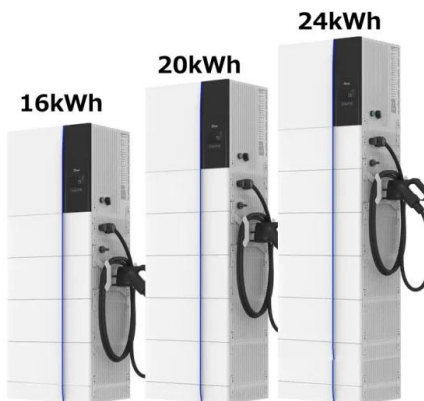


**Flin Energy**

Introducing FlinCharge, an exquisite lithium battery for seamless integration with Flin Energy Solar Inverters, delivering sustainable power solutions. With its cutting-edge technology and advanced Battery Management System (BMS), FlinCharge handles an impressive 150A discharge current on a compact 100Ah battery.

**Delta 51.2V100Ah Series**

Delta 51.2V100Ah Series Lithium Iron Phosphate (LFP) Battery This new Delta Key Features 51.2 V battery pack is designed with a 100 Ah capacity battery of lithium-ion iron phosphate cell Voltage (Charge) Cell voltage protection: 3.75 V protection (Recover at 3.45



**Deye 5.12 Kwh , 51.2V , 100Ah Lithium ion Battery**

High Capacity: Provides a substantial energy storage capacity of 5.12 kWh, ensuring ample power for various applications. Optimal Voltage: Operates at 51.2V, suitable for compatibility with standard voltage systems. Long Cycle Life: Offers a long cycle life, providing reliable performance over many charge and discharge cycles. Lithium-Ion Chemistry: Utilizes advanced lithium-ion ...



### Ultimate Guide to Lithium-Ion Battery Voltage Chart

The lithium-ion battery voltage chart lets you determine the discharge chart for each battery and charge them safely. Here is 12V, 24V, and 48V battery voltage chart: Charge Capacity (%) 1 Cell 12 Volt 24 Volt 48 Volt 100 3.40 13.6 27.2 54.4 90 3.35 13.4 26.8



### Rentech 51.2V 100Ah Lithium-Ion Battery with CANBUS - ...

Rentech provides Lithium-ion batteries with proven Lithium Iron Phosphate (LifePO4) chemical composition and the range includes both 24V and 48V batteries, up to 7.68kWh. This 48V Rack-Mounted Lithium-Ion Battery is designed for the solar and back-up power market. This series combines safe and reliable LFP prismatic cells with dedicated battery management systems ...

### [CFE 51.2V Lithium Battery 5100S](#)

General Datao Battery Type: Lithium-Iono  
Battery Module: CFE-5100So Total Capacity: 5.1Kwho  
Nominal Charge / Discharge Power: 3.0Kwo  
Operating Voltage: 48VDC to 56VDCo  
Nominal Voltage: 51.2VDCo Maximum Charging Voltage: 57.6VDCo  
Nominal Current: 60Ao Recommended DOD: 90%o  
Installation Type: Cabinet or Wall Mounto  
Maximum Number of Parallel: 10 Unitso ...



### ROYPOW S51105L 48V 105Ah Lithium Golf Cart Battery

Give you a better performance on battery upgrading: BENEFITS Easy golf cart installation, no modification. Easier to climbing hill with more acceleration and speed. Batteries charge quickly to increase your productivity. No maintenance



any more. Suitable for most models of ...



**Rentech 51.2V 5.1kWh 100AH Lithium Wall Mounted Battery**

PRODUCT SPECIFICATIONS Normal Voltage (V) 51.2 Rated Capacity (Ah) 100 Total Energy (Wh) 5120 Recharge Voltage 55.2 Max. Recharge Current (A) 100 For parallel connection, the charge current must be limited to 20A for 50 Ah batteries Max Discharge Current (A) 100 EOD Voltage 44.0 Peak Discharge Power (W) -3s 6720 Dimensions (mm) 430 x x430 x 177 Weight ...



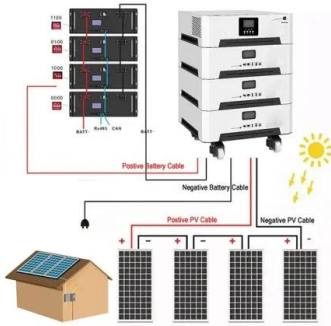
[CAML 51.2V 100Ah, 5.12 kWh LiFePO4 Battery](#)

CAML Wall Mounted Lithium Ion Battery Cell Technology Lithium Iron Phosphate (LiFePO4) Cycle life 6000 Times@80% DoD Warranty 5 Years Protection Smart BMS Protection with Communication Efficiency 98% Certifications UN38.3, ...

[???????????????, LiFePO4 51.2V 200Ah, ???](#)

Stacked 51.2V ??????????????. ?? ¥2,260 / kWh \*.  
?????: LFP(????). ?????: 51.2 V. ?????: 100 Ah. ??  
?????. ??????





[Deye Lithium Battery 100Ah 51.2V SE-G5.1 Pro](#)

Discover the Deye Lithium Battery 100Ah 51.2V SE-G5.1 Pro - a high-capacity and efficient energy storage solution from Deye. This lithium-ion battery is designed to provide reliable and long-lasting power storage for various ...

**51.2v 100ah LiFePO4 Server Rack Battery UL Listed**

If you want to build a huge off-grid solar power system with all the features you can imagine for a low price, Aolithium 48V 100Ah server rack batteries are the way to go. Shop best 48V 100Ah server rack battery. UL Listed Class A battery. 4000+ cycles @85% DOD, 6000+ cycles @80% DOD. 15+ years typical lifespan and 8-year warranty. 6.0 single pole angled connector (IP67), ...



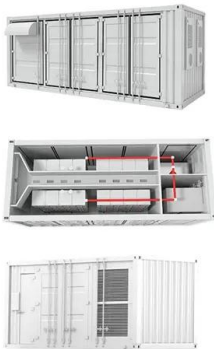
**51.2V 60Ah Lithium Battery , Spartan Batteries**

Spartan 51.2V 60Ah Lithium Battery Nominal: 51.2 V Rated Capacity: 60Ah Max Charge: 58.4 V Discharge Cut Off: 40.0 V Max Charge: 50.0 A Skip to content 4 Olive Tree Cove, The Coves, Hartbeespoort, North West, 0216 082 410 3589 o 076 488 3177 Menu



[51.2V 100Ah Lithium Battery](#)

Unleash the unmatched potential of EPEVER's 51.2V 100Ah Lithium Battery. Crafted with premium prismatic LiFePO4 cells, it ensures enduring reliability, exceeding 4000 cycles at 80% DOD. This battery boasts intelligent cell ...



### [BSL Powerline 5 Lithium Battery](#)

3C peak value Up to 81.9 kWh in Low Voltage  
Connection Real-time monitoring system and  
remote debug Non-toxic and non-hazardous  
cobalt-free LFP chemistry Extended operating  
temperature -20°C to 60°C The thinnest Home  
ESS ever built with just 90mm thickness  
Certification: IEC62619, CE, UL1973, UN38.3  
Exceptional lifespan of up to 8000 cycles Cycle ...

## Contact Us

---

For catalog requests, pricing, or partnerships, please visit:  
<https://www.vdbconstruction.co.za>