

# 5110 power systems i class





## Overview

---

What is an Eaton 5110 uninterruptible power system?

re, at a very attractive price. The Eaton® 5110 uninterruptible power system (UPS) provides a layer of defense between your equipment and raw utility power. This line-interactive UPS constantly safeguards your systems from power outages, surges, sags, brownouts, and overvoltage conditions—and provides varying degrees of protection fro.

What is a 5110 ups & how does it work?

small to medium organizations. Incorporating more than 40 years of UPS design experience, the 5110 provides cost-effective power management, backup power, and power quality for office workstations, PBX or key telephone systems, servers, small network nodes, point-of-sale systems.

Why does the 5110 use AVR?

er without draining the battery. The 5110 uses AVR to smooth out wide fluctuations in input voltage. If input voltage varies as much as 25 percent over or 23 percent under nominal voltage—which can easily happen when running on generator power or in severe environments—the 5110 accepts this inconsistent voltage and delivers clean, consistent.

Does Eaton pw511 have a warranty?

afe® software, free of charge. This UPS management software gives you control and visibility over all your UPSs, using an with load protection guarantee. Rest easy with industry-leading protection from Eaton. The 5110 is backed by a two-year limited warranty and a \$15,000 load protection guarantee. We're that confident of the performance PW511.

How much power does an Agilent ICP-OES use?

Table 5. The Agilent ICP-OES requires a single phase mains input voltage of between 200-240 VAC (50-60Hz) and draws a maximum of 15 amps RMS at



200 to 220 volts and 13 amps at 230-240 volts (2.9 kVA) with a power factor of approximately 0.99.

How do I Choose an Agilent ICP-OES system?

The area selected for the operation of an Agilent ICP-OES system must be free from drafts, corrosive atmospheres and vibration and should be a dust-free, low humidity environment. Sample preparation areas and materials storage facilities should be located in a separate room.



## 5110 power systems i class



### [5110 POWER ENTRY MODULES WITH LINE FILTER](#)

165 SUMMARY , INDEX BY TYPES , INDEX BY ORDER NUMBERS 5110 POWER ENTRY MODULES WITH LINE FILTER Snap-in mounting 36 5 3.5 9.5 41.2 21 29 0 R m a x . 23 3 7.9 4.1 21 +0.2 0 +0.2 Technical data of filter-components

### 5110

Protection Class Suitable for appliances with protection class 1 acc. to IEC 61140 Terminal Quick connect terminals 6.3 x 0.8 mm Panel Thickness s Screw: max 5 mm Mounting screw torque max 0.5Nm Snap-in: 0.8 mm to 3 mm Material: Housing Thermoplastic, black, UL 94V-0

### Support Customized Product



### [Powerware series Eaton 5110 UPS](#)

The Eaton® 5110 uninterruptible power system (UPS) provides a layer of defense between your equipment and raw util-ity power. This line-interactive UPS constantly safeguards your systems ...

### power meter PowerLogic PM5110, modbus, up to 15th Harmonic, ...

Green Premium TM label is Schneider Electric's commitment to delivering products with best-in-class environmental performance. Green Premium promises compliance with the latest ...



### 5110 POWER ENTRY MODULES WITH LINE FILTER

Description. Characteristics. - Panel mount: Snap-in or screw-on mounting from front side. -2 Functions: Connector Protection class I, Line filter in standard and medical version. Quick ...



### ACQUITY UPLC I-Class PLUS System , Waters

Improve your resolving power, lower your system volume and achieve the tallest, sharpest peaks with the ACQUITY UPLC I-Class PLUS System. Maximize the potential of your chromatography setup by utilizing the Acquity UPLC I-Class Plus System by Waters.



### **Class Roster**

Fall 2021 - ECE 5110 - Introduction to models for random signals in discrete and continuous time; Markov chains, Poisson process, queuing processes, power spectral densities, Gaussian random process. Response of linear systems to random signals.



### Characteristics power meter PowerLogic PM5110, modbus, up ...

Reactive power +/- 2 % Accuracy class Class 0.5S active energy conforming to IEC 62053-22 Number of outputs 1 digital Communication port protocol Modbus RTU and ASCII at 9.6, 19.2 ...



### EasyLogic PM2110, Power & Energy meter, Total Harmonic, LED ...

Schneider Electric Egypt. METSEPM2110 - EasyLogic PM2110, Power & Energy meter, Total Harmonic, LED display, Pulse, class 1. Green Premium TM label is Schneider Electric's commitment to delivering products with best-in-class environmental performance.

### 5110

8 Standard Version Snap-in 5110.0843.1 10 Standard Version Snap-in 5110.1043.1 15 Standard Version Snap-in 5110.1543.1 1 Standard Version Screw 5110.0133.1 2 Standard Version Screw 5110.0233.1 3 Standard Version Screw 5110.0333.1



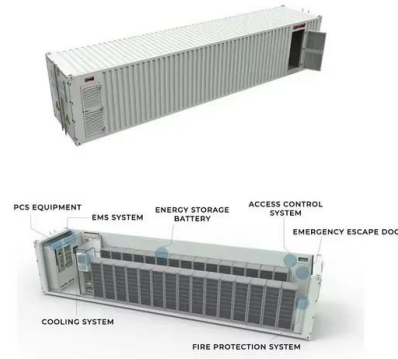
### OMIS 5110 A

If you feel that you have to miss a class or any part of a class please inform the instructor before the class so that you will not be called upon in class and so that the instructor can advise you on how to keep up with the rest of the class. I expect that you will: 3.



**5110**

Appliance Inlet Protection class I, Line filter in standard and medical version - Quick connect terminals 6.3 x 0.8 mm Approvals - References VDE Certificate Number: 40035745 - UL File Number: E72928 - CCC File Number: 2006010204191430



[60+ Power Systems Online Courses for 2024](#)

Best online courses in Power Systems from Stanford, Duke, NPTEL, IIT Roorkee and other top universities around the world NPTEL, IIT Roorkee and other top universities around the world. Read reviews to decide if a class is right for you. Follow 214

**5110**

5 Power Entry Modules with Line Filter 5110  
[https:// PG06 EMC Products All Variants Rated Current \[A\] Filter-Type Panel mounting Order Number 1 Standard version Snap-in 5110.0143.1 2 Standard version Snap-in 5110.0243.1 3 Standard](https://PG06 EMC Products All Variants Rated Current [A] Filter-Type Panel mounting Order Number 1 Standard version Snap-in 5110.0143.1 2 Standard version Snap-in 5110.0243.1 3 Standard)



[IBM 5110 Computing System . Ctrl+Alt Museum](#)

Fortunatamente per le tasche dell'azienda il suo successore, l'IBM 5110, ebbe molto più successo grazie alla sua tastiera alfanumerica e il display Crt monocromatico da 5 pollici. Torna all'archivio Il museo Ctrl+Alt è gestito dall'associazione comPVter APS il museo è visitabile su appuntamento, prenotabile per eventi aziendali, workshop e seminari a tema tecnologico.



[Eaton 5110 1500 UPS 103004259-5591](#)

Eaton 5110 1500 ups sales support call (888) 330-2538. Power Pros provides expert sales and support on Eaton 5110 ups systems. Eaton 5110 line interactive UPS rated at 1440VA/900 watts. Compact design, features include 4 UPS receptacles, 4 surge



51.2V 300AH

**Class Roster**

Introduction to models for random signals in discrete and continuous time; Markov chains, Poisson process, queuing processes, power spectral densities, Gaussian random process. Response of linear systems to random signals. Elements of estimation and inference as they arise in communications and digital signal processing systems.

[PM5110 Power Meter Measure Current & Voltage](#)

CS Instruments PM 5110 Power Meter. Digital data transfer to a DS500 chart recorder or DS400 data logger. Wide array of measurements calculated. Current measurement accuracy of  $\pm 0.5\%$  ...



**Class Power Systems**

Class Power Systems , 32 followers on LinkedIn. We are proudly Australian owned & we provide comprehensive solution for emergency & standby power generators. , We are located in Sydney and we have established a reputation for designing and maintaining precise and durable equipment and we are committed to quality, safety and the environment. We ...



### Electric Power Systems

It introduces the electric power system, from generation of the electricity all the way to the wall plug. Earn a degree from world-class universities - 100% online Explore degrees Join over 3,400 global companies that choose Coursera for Business Upskill your



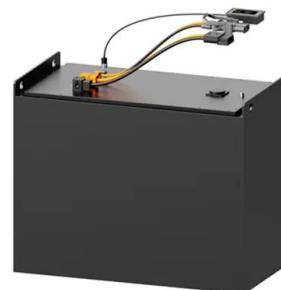
### Powerware 5110

The Powerware 5110 uninterruptible power system (UPS) was designed to provide advanced UPS power protection against the threats that lurk in public utilities. This line-interactive UPS system delivers high-quality power, constantly safeguarding your equipment from power outages, surges, sags, brownouts, and over-voltage conditions while also providing varying degrees of ...



### 5110

5 Power Entry Modules with Line Filter 5110  
[https:// PG06 EMC Products All Variants Rated Current \[A\] Filter-Type Panel mounting Order Number 1 Standard Version Snap-in 5110.0143.1 2 Standard Version Snap-in 5110.0243.1 3 Standard](https://PG06 EMC Products All Variants Rated Current [A] Filter-Type Panel mounting Order Number 1 Standard Version Snap-in 5110.0143.1 2 Standard Version Snap-in 5110.0243.1 3 Standard)



### [METSEPM5110 SCHNEIDER ELECTRIC, Power ...](#)

Buy METSEPM5110 - SCHNEIDER ELECTRIC - Power Meter, PM5000 Series, PowerLogic® Energy, 35 Vac to 760 Vac. e?? Hong Kong offers fast quotes, same day dispatch, fast delivery, wide inventory, datasheets & technical support.





## METSEPM5110

Schneider Electric USA. METSEPM5110 - power meter PowerLogic PM5110, modbus, up to 15th Harmonic, 1DO 33 alarms. Green Premium TM label is Schneider Electric's commitment to delivering products with best-in-class environmental performance. Green



**Deye Official Store**

**10 years**  
warranty

### [Power Systems I , EET301 , Study Materials](#)

Preview and Download study materials of Power Systems I , EET301 , Study Materials of branch Electrical And Electronics Engineering asked in the compiled as per KTU syllabus. The study materials are sorted , S1 , S2 , S3 , S4 , S5 , S6 , S7 , S8 ,,3,1,3,1st year

## Contact Us

---

For catalog requests, pricing, or partnerships, please visit:  
<https://www.vdbconstruction.co.za>