

540 Photovoltaic panel open circuit voltage





Overview

To be more accurate, a typical open circuit voltage of a solar cell is 0.58 volts (at 77°F or 25°C). All the PV cells in all solar panels have the same 0.58V voltage. How do you calculate open circuit voltage of a solar panel?

Multiply solar panel Voc by your correction factor. 3. Multiply the max solar panel Voc by the number of panels wired in series. In this example, the max open circuit voltage of your solar array is 47.6V. Let's say instead that your 2 solar panels are different. They have the following open circuit voltages:.

Do solar panels come with an open circuit voltage rating?

All solar panels come with an open circuit voltage rating. However, this rating is based on results obtained under standard test conditions. Those conditions are a 25°C solar cell temperature, air mass of 1.5, and solar irradiance of 1000 W/m².

How do I find the Max open circuit voltage of my solar array?

Multiply the max solar panel Voc by the number of panels wired in series. In this example, the max open circuit voltage of your solar array is 47.6V. Let's say instead that your 2 solar panels are different. They have the following open circuit voltages: Here's how you'd find your max solar array voltage: 1.

How do I know if my solar panels are open circuit?

Enter your solar panels' open circuit voltage in the "Open circuit voltage (Voc)" field. You can find this information in the solar panel datasheet or product manual. If the panels have the same specifications, enter how many solar panels you connect in series in the "Quantity" input field.

How do you calculate maximum voltage (Voc) of a solar panel?

To estimate the maximum Voc, multiply the solar panel voltage by the correction factor corresponding to the lowest expected temperature:
maximum Voc = solar panel voltage (Voc) * correction factor
If the solar



panels have the same Voc, then this one calculation should do.

What is solar panel VOC?

Solar panel Voc is short for solar panel open circuit voltage. It is the maximum voltage of a solar panel when it isn't connected to any load – no charge controllers, inverters, or anything. All solar panels come with an open circuit voltage rating. However, this rating is based on results obtained under standard test conditions.



540 Photovoltaic panel open circuit voltage



- ✓ 100KW/174KWh
- ✓ Parallel up-to 3sets
- ✓ IP Grade 54
- ✓ EMS AND BMS

[Monocrystalline Solar Panel 540 WP](#)

The best-selling 540 Watt 24 Volt Solar Panel. Solar panels with a capacity of 540 watts made of silicon solar cells Monocrystalline. 540 Watts: Open Circuit Voltage -

Solar Panel Series Vs Parallel: Wiring, Differences, And Your Right

Every solar panel typically comes with a female and a male MC4 connector. Usually, the female MC4 connector stands for the negative terminal, and the male MC4 ...



LFP12V100



[Maximum open circuit voltage calculator](#)

Yes. Just add a 20% margin to the specified Voc in the panel datasheet (at 25C) and make sure your controller can handle that. Anything more is overkill. 15% could even ...

(PDF) Measurement of Open circuit voltage, Short ...

In this study, a panel equivalent circuit is simulated in MATLAB using the catalog data of a PV panel KC200GT to study the cell at MPP and study the effect of temperature and solar radiation on PV



Mono-Perc-Halfcut Solar Panel , 24V Capacity , 540 Wp Power

Mono-Perc-Halfcut Solar Panel , 24V Capacity , 540 Wp Power. Experience the assurance with Livguard's solar panel system that consistently captures full energy. Elevate your return on ...

HOW TO TEST YOUR SYTEM

Observe polarities when connecting solar panels and batteries. Photovoltaic panels produce electricity when exposed to light, so it is recommended that you cover the front of the solar ...



Understanding Solar Panel Voltage for Better Output

Open Circuit Voltage: When your solar panel isn't connected to any devices, you get the highest voltage a panel can produce. Maximum Power Voltage: The voltage at which ...





540W Sharp NU-JD Solar panel with High-Efficiency PERC Cells

Mono-Perc-Halfcut Solar Panel , 24V Capacity , 540 Wp Power. Livguard Solar Panels are Polycrystalline/mono perc PV panels, IEC compliant having range from 40 W - 325 W. Our ...



Inter Solar , 144 Mono Perc 540-550W , Solar Panel Datasheet

Inter Solar Systems Pvt. Ltd. Solar Panel Series 144 Mono Perc 540-550W. Detailed profile including pictures, certification details and manufacturer PDF Solar Panel Ulica Solar - UL ...

Sharp NUJD540 540W Solar Panel Silver Frame Mono ...

The Sharp NUJD540 is a 540W solar panel with a silver frame. The panel has a 144 half-cell design and is ideal for large free-field and commercial rooftop photovoltaic systems. Open circuit voltage: 50.34V; Short-circuit current: ...



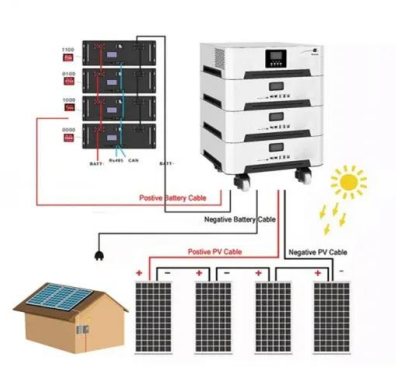
[Solar Cell I-V Characteristic Curves](#)

Solar Panel I-V Characteristic Curves. However, in the real world this 12V rated panels open circuit voltage V OC rating can be as high as 20 volts at full sun for a 12 volt rated panel. Thus, $6 \times 20V = 120$ volts DC. Then any system ...



All You Need to Know about Amps, Watts, and Volts in Solar

Open circuit voltage. The maximum voltage that a solar panel has is called open circuit voltage when the load is not connected. 8 to 12 Voc is for 36 solar panel cells in ...

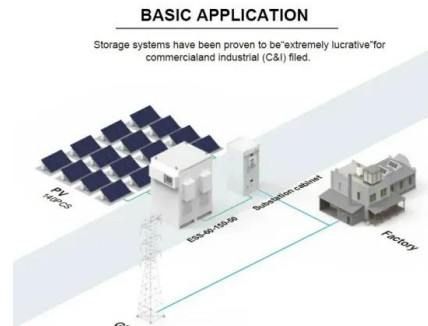


Solar Panel Voltage: Understanding, Calculating and Optimizing

A single solar cell has a voltage of about 0.5 to 0.6 volts, while a typical solar panel (such as a module with 60 cells) has a voltage of about 30 to 40 volts. Skip to content.

Solar Panels

Open Circuit Voltage. 21.6V. 21.6V. 25.2V. Short Circuit Current. 2.9A. 7.2A. 540 Watt Mono Half-cut Solar Panel. Rate Maximum Power(Pmax/W): 540 Module Efficiency(%): 20.9 Open Circuit Volatge(Voc/V): 49.55 Short Circuit ...



Performance evaluation of online open-circuit voltage

The hardware implementation of the online algorithm is depicted in Fig. 3. The PV panel is interfaced with load through a boost converter. Three sensors such as voltage, ...



Open Circuit Voltage Of Solar Cell Formula + Solved Example

Solar panel open circuit voltage is basically a summary of all PV cells Voc voltage (since this they are wired in series). Let's start with the formula: Open Circuit Voltage Formula For Solar Cells. ...



[Solar Panel Voltage Calculator](#)

Calculate the Maximum Open Circuit Voltage of Each Solar Panel in the Solar Array. To estimate the maximum Voc, multiply the solar panel voltage by the correction factor corresponding to the lowest expected ...

Sharp NUJD540 540W Solar Panel Silver Frame Mono ...

Open circuit voltage: 50.34V; Short-circuit current: 13.66A; Voltage at point of maximum power: 41.64V; Current at point of maximum power: 12.97A; Module efficiency: 20.89%; Dimensions: 2279 x 1134 x 35mm (L x W x D) Weight: ...



[Solar Panel Maximum Voltage Calculator](#)

How to Use. Enter the Open Circuit Voltage (Voc) of a Single Panel: This is the maximum voltage that a solar panel can produce when it's not connected to a load (that is, when it's under full ...



540W Bifacial Mono PERC Solar Panel

Upgrade your energy system with our powerful 540W monocrystalline solar panel. Its high-quality construction and advanced technology make it an ideal choice for residential, commercial, or industrial use. Plus, with a max system voltage of ...



540W Sharp NU-JD Solar panel with High-Efficiency PERC Cells

With a 15-year workmanship guarantee and 25-year output guarantee, you can be confident in the quality, durability and longevity of this premium solar panel. Specifications: Peak power: ...

Solar Panel Specifications Explained , Electrical Academia

The most important solar panel specifications include the short-circuit current, the open-circuit voltage, the output voltage, current, and rated power at 1,000 W/m² solar radiation, all measured under STC.. Solar modules must also meet ...



Understanding Open-Circuit Voltage (Voc) & Short-Circuit ...

When purchasing or installing a solar module, or solar panel, there are various key specifications you must look at. Two such key specifications are Open-Circuit Voltage and ...



Canadian Solar CS6W-540MB-AG 540 Watt Bifacial Mono PERC Solar Panel

Canadian Solar CS6W-540MB-AG 540 Watt Bifacial Mono PERC Solar Panel \$ 293.76. Buy product. Categories: Bifacial Solar Panels, Open Circuit Voltage (VOC) 49.2V: Short Circuit ...



Luminous 550W / 24V Mono PERC Halfcut Solar Panel

Latest Luminous 540 watt Mono PERC solar panel comes with half cut cell Capacity - 540W, 24V Voltage: Voltage at Max Power (Vmax) - 40.9V, Open Circuit Voltage (Voc) - 48.9V Current: Current at Max Power (imax) - 10.7A, ...

Open-Circuit Voltage

The above equation shows that V_{oc} depends on the saturation current of the solar cell and the light-generated current. While I_{sc} typically has a small variation, the key effect is the ...



Contact Us

For catalog requests, pricing, or partnerships, please visit:
<https://www.vdbconstruction.co.za>