

63 5-watt-hour lithium-polymer battery





Overview

lithium polymer Li-Po secondary cells pack Lithium battery.

lithium polymer Li-Po secondary cells pack Lithium battery.



63 5-watt-hour lithium-polymer battery



Calculate Battery Life with the Laptop Battery Calculator

Calculate Watt-Hours $Whr = Volts \times mAh / 1000$
Example: $14.8 \text{ Volts} \times 4060mAh / 1000 = 60.09$
Watt-Hours (rounded up) Calculate Milli-Amp Hours $mAh = Whr \times 1000 / Volts$ Example: $60.09 \times 1000 / 14.8 = 4060 \text{ mAH}$ (rounded down) Will a higher mAh battery

Lithium Batteries Best Practice 019 (Revision 3)

Page 1 of 8 Lithium Batteries Best Practice - 019 (Revision 3 - Issued 07Dec2021) Important Notes for All Lithium Cells / Batteries of All Sections:
-Each cell and battery must have completed the UN38.3 test.-Manufacturers and subsequent distributors of cells or batteries manufactured after 30 June 2003 must make

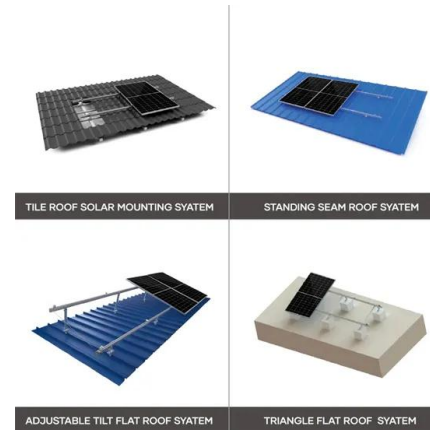


Transport of Lithium Metal and Lithium Ion Batteries

Watt-hour Rating, expressed in Watt-hours (Wh), the Watt-hour rating of a lithium cell or battery is calculated by multiplying the rated capacity in ampere-hours by the nominal voltage.
Classification (DGR 3.9.2.6) Lithium batteries are classified in Class 9; or

How to Estimate Laptop Battery Life Before Buying

Find the battery specification in watt-hours (the units are Whr or Wh) Divide by your expected wattage (in W). A computer under normal use will take 10-15 Watts.



How to Replace the Battery in the 13-Inch Retina MacBook

All 13-Inch Retina Display MacBook Pro models have an integrated lithium-polymer battery. Specifically, the 13-Inch "Late 2012" and "Early 2013" models have an integrated 74-watt-hour battery, the "Late 2013" and "Mid-2014" models have an integrated 71.8-watt-hour battery, and the "Early 2015" models have an integrated 74.9-watt-hour battery.

Transport of Lithium Metal and Lithium Ion Batteries

Watt-hour rating, expressed in Watt-hours (Wh), the Watt-hour rating of a lithium cell or battery is calculated by multiplying the rated capacity in ampere-hours by the nominal voltage. Classification (DGR 3.9.2.6) Lithium batteries are classified in Class 9; or



Vinpera 77.5WH A1321 A1286 Laptop Battery for MacBook Pro ...

1 Lithium Polymer batteries required. (included) Brand Vinperny Battery Cell Composition Lithium Polymer Recommended Uses For Product Laptop Voltage 10.95 Volts About this item SAFE & PROFESSIONAL: Vinpera high-quality replacement laptop battery



Battery Runtime Calculator , How Long Can a Battery ...

For a 12V, 100Ah battery supplying a 10A load, the battery life would be approximately 10 hours. 24V Battery Life: A 24V battery's life also depends on its Ah rating and the load. If we have a 24V, 200Ah battery ...



Advantages and Disadvantages of Lithium Polymer Batteries

Lithium polymer or LiPo batteries represent a specific type of rechargeable battery based on lithium-ion technology. They are fundamentally a subset of li-ion batteries and as such, they are more correctly referred to as lithium-ion batteries. However, for brevity

Polymer Electrolytes for Lithium-Based Batteries: Advances and

Over the past decades, lithium (Li)-ion batteries have undergone rapid progress with applications, including portable electronic devices, electric vehicles (EVs), and grid energy storage. 1 High-performance electrolyte materials are of high significance for the safety assurance and cycling improvement of Li-ion batteries. . Currently, the safety issues originating from the ...



M3 MacBook Air battery life: Here's what you get

For capacity, the 13-inch has a 52.6-watt-hour lithium-polymer battery. And the 15-inch uses a 66.5-watt-hour lithium-polymer battery. How does that compare to the M2 MacBook Air models?



[Lithium battery watt hour calculator](#)

You may need to know the watt hour (Wh) rating of a lithium battery to determine how it should be shipped or to ensure you conform to regulations regarding air travel with lithium batteries. This applies to lithium metal batteries (disposable) and lithium ion batteries (rechargeable).



[Lithium-ion or Lithium-polymer](#)

Technical specs indicate a "Built-in 63.5-watt-hour lithium-polymer battery". However, the computer services at the university where I work recommended me a Lithium-ion ...

Packing Instruction 965

Chapter 11 4-11-25 2017-2018 EDITION Packing Instruction 965 Cargo aircraft only for UN 3480 1. Introduction This entry applies to lithium ion or lithium polymer batteries. This packing instruction is structured as follows: -- Section IA applies to lithium ion cells



Change battery to Li-Polymer 10.95V 72wh from Built-in 63.5-watt ...

Hi, currently i have a mac book pro early 2011 13 inch - 2.7 core i5. According to the apple site (<https://support.apple.com/kb/SP619?local>) i have a battery configuration of ...



[Lithium Battery Packing Instruction 965](#)

Chapter 11 4-11-23 2015-2016 EDITION Packing Instruction 965 Passenger and cargo aircraft for UN 3480 1. Introduction This entry applies to lithium ion or lithium polymer batteries. This packing instruction is structured as follows: -- Section IA applies to lithium



[Lithium polymer battery specification](#)

Lithium ion Polymer Battery Pack LP503759 1200mAh 3.7V with Protection Circuit Module(PCM). This data sheet describes the requirements and properties of lithium ion polymer rechargeable battery pack manufactured by LiPoL Battery Co., Ltd-China We have

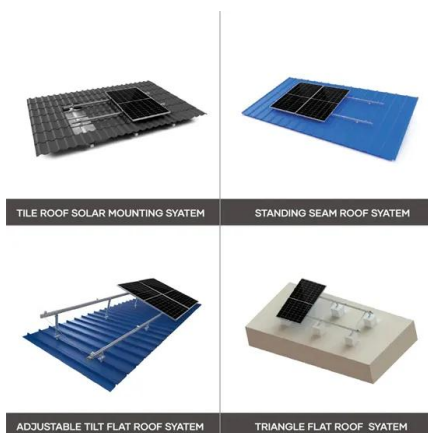
A Guide to Lithium Polymer Batteries for Drones

Lithium Polymer (LiPo) batteries are a major power source for drones. In this article we will explain how LiPo batteries work and what they are made of. Hi Arman, Thanks for your comment. g/W refers to grams (of thrust)/ Watt (input power), a way of expressing



13-Inch Retina Display MacBook Pro Battery Life: EveryMac

Likewise, these 15-Inch Retina Display MacBook Pro models also have an integrated and glued "95-watt-hour lithium-polymer battery." By contrast, the "regular" Mid ...





????????

?????(?:lithium polymer,?:Li-Po),????????????,
????????????????????????????????????(secondary
cells)????????,????????(pack)????????
????????????????????????,????????????????(Lithium
battery)?????,????????,????????????? ...

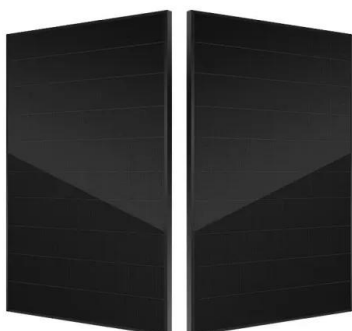
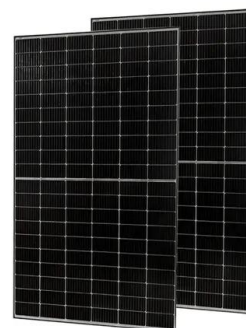


2000mAh Lithium Polymer Battery LP505563 3.7V 7.4Wh

Battery Type: Lithium Polymer Battery
Configuration: 1S1P Part Number: LP505563
Capacity: 2000mAh Voltage: 3.7V Wat-Hou
Rating: 7.4Wh Weight: appr. 40g Protection
Circuit (PCM): Yes Thermistor(NTC): NO Wires:
Yes Dimension: 5.0 x 55 x 63mm

How to Find Watt Hour Rating of a Lithium Battery

Here's how to find the watt hour rating for a lithium battery. Plus, find training to ship lithium batteries in compliance with DOT, IATA, and IMDG hazardous materials regulations. Login (888) 546-6511 Toggle navigation Login (888) 546-6511 Hazmat Training (DOT



Lithium (LiFePO4) Battery Runtime Calculator - Dot Watts®

Battery discharge rate - Lithium battery: 90-95%
Average phone battery usage when the screen is On: 220 mA Battery runtime = (4323 x 95%) ÷ (220) Battery runtime = (4106) ÷ (220) iPhone Battery runtime = 18.6 hours Lithium battery maximum discharge rate?



[Material Safety Data Sheet](#)

This document refers to the Lithium-ion Polymer Cells of not more than 20 Watt-hour and Batteries of not more than 100 Watt-hour. Cells or batteries are of the type proven to meet the requirements of each test in the UN Manual of Test and Criteria, Part III3.9.2



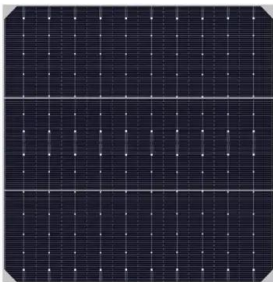
5000mAh Lithium Polymer Battery 3.7V LP954896 High

Battery Type: Lithium Polymer Battery
Configuration: 1S1P Part Number: LP954896
Capacity: 5000mAh Voltage: 3.7V Wat-Hou
Rating: 18.5Wh Weight: appr. 100g Protection
Circuit (PCM): Yes High Voltage Lithium Polymer
Battery 3.85V LP496584 4870mAh 18



MacBook Pro 13" A1322 battery for Apple A1278 ...

Get up to 7 hours of run time with a replacement MacBook Pro 13.3" inch A1322 battery. This MacBook Pro A1322 battery is made specifically to replace the original Apple battery found in Apple MacBook Pro 13.3" models made ...



LITHIUM POLYMER BATTERY MSDS(MATERIAL SAFETY ...

The Lithium Polymer Battery with a Watt-hour rating not exceeding 100Wh or the cell with a Watt-hour rating in not exceeding of 20Wh. The packaging shall be adequate to avoid mechanical damage during transport, handling and stacking.



At 42.5-watt-hours capacity, the new iPad is almost all ...

new battery is a 42.5-watt-hour rechargeable lithium-polymer battery with 70 percent more capacity compared to the iPad 2's 25-watt-hour battery (pictured right). Judging from the image of the



[Mid 2009 A1286 Battery Upgrade](#)

they are two different batteries, from my research, the mid 2009 15" MBP has a 73-watt-hour non-removable lithium-polymer, and the mid 2010 15" MBP has a 77.5-watt-hour ...



Transport of Lithium Metal and Lithium Ion Batteries

, expressed in Watt-hours (Wh), the Watt-hour rating of a lithium cell or battery is calculated by multiplying the rated capacity in ampere-hours by the nominal voltage. Classification (DGR 3.9.2.6)



LXHY A1322 A1278 Battery 63.5WH 10.95V Replacement for ...

PRODUCT SPECS: Model: A1322 ; Battery type: Li-polymer; Voltage: 10.95V ; Capacity: 63.5WH ; 6 A+ Cells.With Two Free Screwdrivers. 100% Brand New fore your purchase, please ...





What is a 100 watt hour lithium battery? , Redway

In this blog post, we have explored the world of lithium batteries and specifically focused on 100 watt hour lithium batteries. These batteries offer numerous Redway Battery Search Search [gtranslate] +86 (755) 2801 0506 WhatsApp WhatsApp



Ultimate Guide to Lithium-Ion Battery Voltage Chart

12V Lithium Battery Voltage Chart Generally, battery voltage charts represent the relationship between two crucial factors -- a battery's SoC (state of charge) and the voltage at which the battery runs. The below table ...

15-Inch Retina Display MacBook Pro Battery Life: EveryMac

These Retina Display MacBook Pro models share the same integrated and glued "95-watt-hour lithium-polymer battery." By contrast, the "regular" Mid-2012 13-Inch and ...



Contact Us

For catalog requests, pricing, or partnerships, please visit:
<https://www.vdbconstruction.co.za>