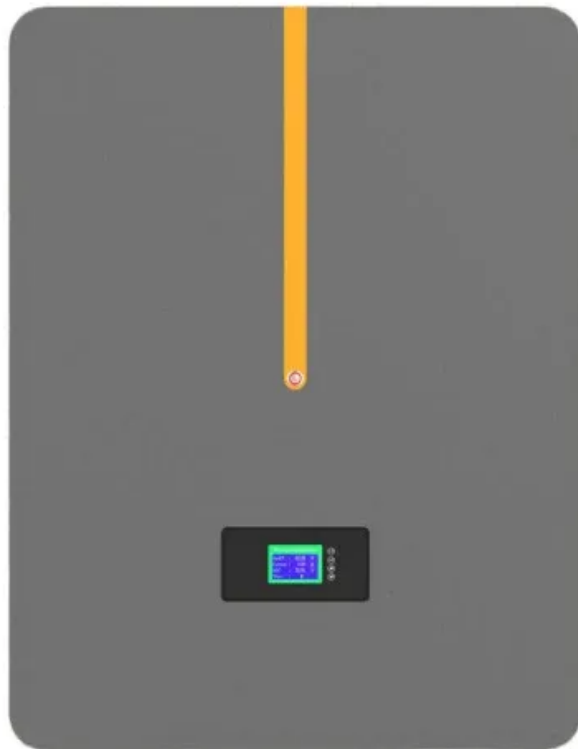


# **Best charge rate for lithium batteries**





## Overview

---

What is lithium ion battery charging efficiency?

At its core, lithium ion battery charging efficiency involves several key components: the charging process itself, energy retention, heat management, and the impact of charging speed on battery health. Each of these factors plays a significant role in how efficiently a li ion battery efficiency can be charged and subsequently utilized.

What is lithium-ion battery charging?

Now that you have your preferred gadget take a seat, and let's explore the world of lithium-ion battery charging. Rechargeable power sources like lithium-ion batteries are quite popular because of their lightweight and high energy density. Lithium ions in these batteries travel back and forth between two electrodes when charged and discharged.

What voltage should a lithium battery be charged?

Understanding the charging voltages for lithium batteries is crucial for maintaining battery health and performance. This includes knowing the appropriate voltages for the bulk, absorption, and float stages of charging. For lithium batteries, the recommended voltage range for battery charging is between 14.2 and 14.6 volts.

Should you charge a lithium ion battery all the way up?

When your battery is discharging, Battery University recommends that you only let it reach 50 percent before topping it up again. While you're charging it back up, you should also avoid pushing a lithium-ion battery all the way to 100 percent. If you do fill your battery all the way up, don't leave the device plugged in.

Why do lithium ion batteries need to be charged efficiently?

Efficient charging reduces heat generation, which can degrade battery



components over time, thus prolonging the battery's life. Several factors influence the charging efficiency of lithium ion batteries. Understanding these can help in optimizing charging strategies and extending battery life.

How long does it take to charge a lithium battery?

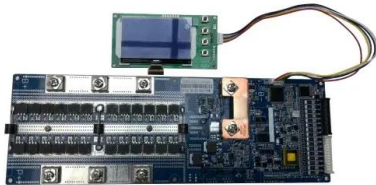
The time it takes to charge a lithium battery depends on several factors, including the power output of the charger and the capacity of the battery. Generally, charging a lithium battery can take anywhere between 1-4 hours, depending on the specific charger and battery combination.



## Best charge rate for lithium batteries

---

### 5 Best 12 Volt Lithium RV Batteries Reviewed + How ...



Most RVs aren't made for lithium batteries, ensure your current charging system (converter, solar charge controller, alternator) is compatible with lithium batteries. Most lithium battery manufactures recommend only using ...

### Charging Lithium Ion Batteries: A Complete Guide

This extensive tutorial will examine common misconceptions, best practices, and strategies to optimize battery performance as we delve into the details of charging lithium-ion batteries. Tel: +8618665816616



### The Complete Guide to 8 Best Battery Charger For Lithium Batteries

Advantages The ULTRAPOWER 4Amp 12.8V-14.6V Lithium LifePO4 Battery Charger is a great product for those who need to charge their batteries quickly and efficiently. This charger is four times faster than standard chargers, meaning that you can get your



### How to Charge 18650 Lithium-Ion Battery: A Comprehensive Guide

Charge at the Recommended Rate: As mentioned earlier, the recommended charge rate for a 2600mAh 18650 battery is between 0.5C (1.3A) and 1C (2.6A). Charging at a lower rate, such as 0.5C, can help prolong the battery's



lifespan, while a higher rate can quickly fill the battery to around 70% capacity.



### How to Charge Lithium-Ion Batteries: Best Practices

Include various mechanisms to prevent damage and danger, unlike chargers intended for lead acid batteries. When selecting a charger for your lithium batteries, it's important to consider factors such as the battery voltage ...

### How to Charge LiFePO4 Battery: Easy Tips & Tricks Inside

Using a Lithium Iron Phosphate (LiFePO4) battery charger is widely regarded as the best way to charge LiFePO4 batteries. These chargers are specifically designed to enhance battery performance and safety, making them the optimal choice for any LiFePO4 setup.



### Best Lithium Battery Chargers & Which One You Should Get

Specifically designed for charging 12V lithium (LiFePO4) batteries. 20A Charging Output - Provides a fast charging rate suitable for various lithium battery sizes, including 100Ah. Automatic Voltage Detection - Identifies the correct voltage and adapts the



[\[Full Guide\] How to Charge LiFePO4 Batteries](#)

Lithium Iron Phosphate (LiFePO4) batteries are becoming increasingly popular for their superior performance and longer lifespan compared to traditional lead-acid batteries. However, proper charging techniques are crucial to ensure optimal battery performance and extend the battery lifespan. In this article, we will explore the best practices for charging ...

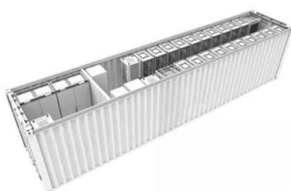


**Battery C Rating: Why it Matters for Lithium Batteries**

LiFePO4 batteries may have lower discharge rates compared to LiPo batteries. Understand the chemistry's impact on the C rating for your specific needs. Cell Configuration: Single cells usually have lower C ratings than parallel or series configurations.

**How To Charge Lithium Iron Phosphate (LiFePO4) Batteries**

Can I charge lithium with solar panels? Yes, you can charge Canbat lithium batteries with solar panels. In fact, you can charge them with any type of charging equipment, as long as the charging voltage is within 14V to 14.6V for our 12V LiFePO4 batteries.



**Optimal Lithium Battery Charging: A Definitive Guide**

Your charger should match the voltage output and current rating of your specific battery type. Lithium batteries are sensitive to overcharging and undercharging, so it is essential to choose a compatible charger to avoid any ...



### What Is the Best Charge Rate for LiFePO4?

The optimal charge rate for Lithium Iron Phosphate (LiFePO4) batteries is typically between 0.5C to 1C. This means that if you have a 100Ah battery, the best charging current would be between 50A and 100A. Charging within this range helps maximize battery life while ensuring efficient performance. Understanding Charge Rates for LiFePO4 Batteries ...



12V 10AH



### **A Designer's Guide to Lithium (Li-ion) Battery Charging**

Lithium ion (Li-ion) batteries' advantages have cemented their position as the primary power source for portable electronics, despite the one downside where designers have ...

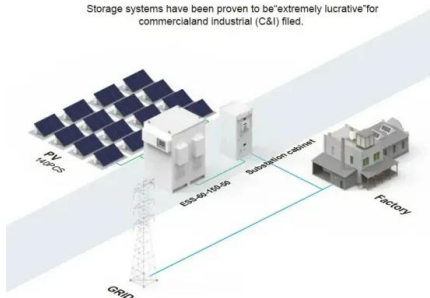
### What amp should I charge my LiFePO4 battery?

Refer to my article about my recommended chargers for LiFePO4 batteries. Conclusion Figuring out at what amp you should charge your LiFePO4 battery is straightforward. Multiply the C-rate of the battery by the capacity of the battery. C-rate (usually 0.5



#### **BASIC APPLICATION**

Storage systems have been proven to be "extremely lucrative" for commercial and industrial (C&I) filed.



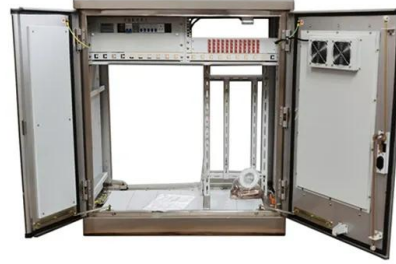
### **Charging LiFePO4 Batteries In Parallel And Series Guide**

In conclusion, you must have got all the information around lithium batteries and charging lithium phosphate batteries in parallel and series. While LiFePO4 batteries are among the safest lithium-ion chemistries available and the configuration in which they are charged and discharged plays a vital role in their performance and longevity.



## Charging Lithium Ion Batteries: A Complete Guide

With its extended lifespan and great energy density, the lithium-ion battery has completely changed how we power our electronics. This extensive tutorial will examine common misconceptions, best practices, and strategies to ...

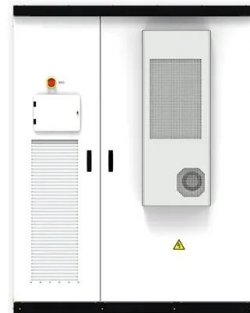


## Lithium Ion Battery Charging Efficiency: Breakthrough ...

Improving lithium ion battery charging efficiency can be achieved by maintaining optimal charging temperatures, using the correct charging technique, ensuring the battery and charger are in good condition, ...

## The Complete Guide to Lithium Battery Charging

Especially when charging at a C rate, it's best not to charge during extreme temperature swings, store your battery inside, or utilize E360 thermal kits when necessary. Taking these steps reduces the chance of the BMS automatically shutting down and disrupting the charging process.



## Debunking Lithium-Ion Battery Charging Myths: Best ...

Data from the IEEE Spectrum shows that a lithium-ion battery's optimal temperature range for charging is between 20°C to 45°C (68°F to 113°F). Charging outside of this range can significantly reduce the battery's lifespan. ...



## How To Charge Lithium Iron Phosphate (LiFePO4) ...

If you've recently purchased or are researching lithium iron phosphate batteries (referred to lithium or LiFePO4 in this blog), you know they provide more cycles, an even distribution of power delivery, and weigh less than a comparable ...



## BU-808: How to Prolong Lithium-based Batteries

Table 4: Discharge cycles and capacity as a function of charge voltage limit Every 0.10V drop below 4.20V/cell doubles the cycle but holds less capacity. Raising the voltage above 4.20V/cell would shorten the life. The readings reflect regular Li-ion charging to 4.20V

## How to Charge Motorcycle Lithium Battery: Best Practices for ...

When charging motorcycle lithium batteries, it's best to use dedicated chargers specifically designed for Lithium Iron Phosphate (LiFePO4) or Lithium-ion (Li-ion) batteries. Avoid fast charging and always follow the manufacturer's guidelines to prevent damage and ensure optimal performance.



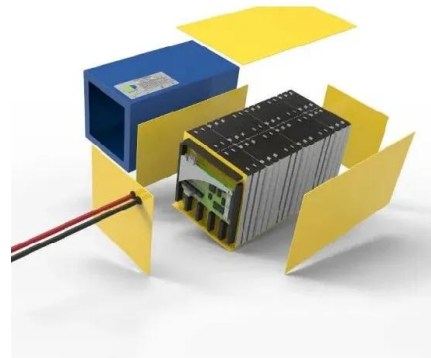
## 5 Best Lithium Batteries For RV 2024 (and What To AVOID)

Rapid Charging: Lithium batteries have a fast charging capability, allowing you to quickly recharge your battery when connected to a reliable power source. This feature is especially beneficial for RVers who prefer shorter charging ...



### The Basics of Charging Lithium Batteries , RELiON

Storing lithium batteries at a partial charge minimizes the stress on the battery's chemical structure, thereby reducing the rate of degradation and extending the battery's overall lifespan. Regular Use : Lithium batteries perform best with regular use.



### A guide to lithium-ion battery charging best practices

Laptop and cell phone batteries have a finite lifespan, but you can extend it by treating them well. Follow these lithium-ion battery charging tips to keep them going. This story has been updated

### The Complete Guide to Lithium Battery Charging

In addition to charge rate, monitoring ambient temperature and mitigating temperature extremes dramatically impacts lithium battery charging. Especially when charging at a C rate, it's best not to charge during extreme ...



### Lithium-Ion Battery Care Guide: Summary Of Battery Best Practices

Unlike most other battery types (especially lead acid), lithium-ion batteries do not like being stored at high charge levels. Charging and then storing them above 80% hastens capacity loss.



### The Best Rechargeable Battery Charger in 2024 (For Eneloops, ...

For using Lithium-Ion batteries at full charge rate you might have to upgrade the provided power adapter Please note that the Pros and Cons mentioned above do not fit all users of course. For a full review see Opus BTC3100 2.1V by HKJ .



### Charging a Lithium Iron Phosphate (LiFePO4) Battery Guide

Discover the benefits of LiFePO4 batteries and follow a step-by-step guide to efficiently charge your Lithium Iron Phosphate battery. Step-by-Step Guide to Charging a LiFePO4 Battery Charge your LiFePO4 battery like a pro with these easy steps: Pre-Charging

### Your Guide to the Best Lithium Caravan Lithium Battery

The lithium batteries we're talking about in the context of caravanning are Lithium Iron Phosphate batteries, abbreviated to LiFe or LiFEP04. These are not to be confused with Lithium Ion batteries (abbreviated to Li-ion) which ...



### Lithium-Ion Batteries: Charging Guide for Maximum Endurance

Lithium-ion and lithium-polymer batteries should be kept at charge levels between 30 and 70 % at all times. Full charge/discharge cycles should be avoided if possible.



## **A guide to lithium-ion battery charging best practices**

In this article, we will explain how these batteries work and share our 5 top tips on how to charge your industrial-grade lithium-ion batteries to optimize their lifespan. You'll find out how balancing charging speed and rate is ...



## **Contact Us**

---

For catalog requests, pricing, or partnerships, please visit:  
<https://www.vdbconstruction.co.za>