

# **Best inverter for 200 watt solar panels**





## Overview

---

For a 200W solar panel system, you need anywhere between 300-1000 watt inverter to run AC appliances. What size inverter for 200 watt solar panel?

For a 200W solar panel system, you need anywhere between 300-1000 watt inverter to run AC appliances. However, the exact size of the inverter you need depends on the specific appliances you plan to use.

Can a 200W solar panel run on a 250W inverter?

A 200W solar panel running on a 250W inverter and 12V battery requires a 20A charge controller. For the best results, you should use an MPPT charge controller. To calculate the charge controller size, divide the total solar panel watts by the battery voltage. In our example we have a 200W solar panel and a 100ah 12V battery.

Is a 200W inverter too small?

Even assuming your solar panel does not produce the maximum output of 200 watts, a 200W inverter with an 85% efficiency is too small. The maximum load is 190 watts. If your solar panel produces 200 watts an hour, it will overload the inverter. Depending on your location the solar panel might generate around 190 watts or less.

How do I size a solar inverter?

When sizing a solar inverter, the first factor to consider is the size of your solar panel system. To determine the total wattage, simply add up the wattage of each individual solar panel. For example, if you have ten 300-watt panels, your total wattage would be 3,000 watts ( $10 \times 300W = 3,000W$ ).

Can a 200 watt solar panel be used at night?

If you are going to use a 200 watt solar panel, you have to get a 250W inverter. A 100ah battery is also required if you want to store the solar power for use at night. A 200W inverter is not enough for a 200W solar panel



because they are not 100% efficient. When an inverter runs and converts DC to AC, some power is lost.

How efficient is a solar inverter?

As long as the input from the panels falls within the range of the window, the inverter can be considered to be operating optimally. In the graph below, the red line represents an average inverter efficiency and the green arrow represents the power output from your solar panels.



## Best inverter for 200 watt solar panels



### [What Size Inverter For a 100W Solar Panel?](#)

Can I Connect Several 100W Solar Panels to an Inverter? If you want to build a solar array you need more than 100 watts. Fortunately you can connect several of these to gain more power. But make sure the inverter has enough capacity for what you need.

### [3 Best 200 Watt Solar Panels](#)

In this buyers' guide, let's check out the 3 best 200 watt solar panels for small scale solar system setup. There are tons of options out there and it's important to pick the right between 12V and 24V, so we have done the research for you to save you time. Let's check them out. [3 Best 200W 12V Solar ...](#) [3 Best 200 Watt Solar Panels](#)  
[Read More »](#)



### **The 10 BEST Campervan Solar Panels (Ultimate 2024 Guide)**

As one of the most well-known companies on the market, Renogy has some of the best solar panels for RVs and vans - that includes their 100 watt Portable Solar Suitcase. Although it packs up small (19.9 x 27.2 x 2.8 inches), you can expect it to be made with the long-lasting and durable materials that Renogy is known for.

### **The Best Inverter For High Power Solar Panels**

What Are The Best Grid Tie Inverter & Solar Panel Combos? Enphase Microinverter IQ7A with LG 375 - 380 watt solar panels Enphase



Microinverter IQ7X with Panasonic 330 or 340 watt solar panels Sunpower SPWR-A4 with Sunpower 440 watt solar panels .



### Choosing Solar Panels For A Solar Generator (Buyers ...

If you're looking for solar panels for your solar generator, this article will undoubtedly come in handy! Solar generators offer a great energy solution for those who like exploring the outdoors without sacrificing the ...

### [The Best 200 Watt Solar Panel](#)

That being said, there are still more of the lower wattage panels on the market, although it is now not unusual to find the 200-watt solar panels in 12V and 24 Volt versions. This post describes the best 200W solar panels and kits currently available.

TAX FREE

### ENERGY STORAGE SYSTEM

**Product Model**  
HJ-ESS-215A(100KW/215KWh)  
HJ-ESS-115A(50KW 115KWh)

**Dimensions**  
1600\*1280\*2200mm  
1600\*1200\*2000mm

**Rated Battery Capacity**  
215KWH/115KWH

**Battery Cooling Method**  
Air Cooled/Liquid Cooled



### MPPT charge controller calculator: Find the right solar charge

i recently bought a 200 amp, 12volt batter with blue tooth, 40 amp Renogy charge controller, 2-100 watt solar panels. from your examples above with 4-100 watt panels, i could add 4 more panels to my system without replacing my charge controller for a 60 amp



### Solar Panels 200 Watts (Flexible - RV - Power - Calculated)

When purchasing solar panels (200 watts), you must know what devices you can run on a 200-watt solar panel kit, how many you need, and other details to ensure optimal functioning. A single 200-watt solar panel can power small to standard appliances, as long as they do not require high energy.



### 200-Watt 12-Volt Monocrystalline Complete Solar Panel Kit with ...

Camp without having to give up the luxury of electricity. This NATURE POWER solar panel provides up to 200-Watt of power. Great for use with RVs, boats, and backup power. Freedom from noisy expensive gas generators, opt for silent and environmentally friendly solar power that can help you to become electrically independent. Kit includes 400-Watt Inverter, 12 Amp ...

### 10 Best Solar Micro Inverters & Their Reviews [Updated 2022]

10 best solar micro inverters and their reviews for 2022. We cover how long they last and the pros and cons of each one. each micro-inverter can be paired with 2 solar panels of 300 watts. Technicians recommend the KD600W because it's safe and cheap.



### Best Solar Panels For Anker Portable Power Stations

Best Solar Panels For Anker PowerHouse 200 The Anker PowerHouse 200 is the smallest of the portable power stations and it uses a smaller input that's 5.5 x 2.1mm. The solar input rating is only 39 watts which ...



### What Size Solar Inverter Do You Need for Solar ...

Choosing the right size solar inverter is crucial for maximizing the efficiency and performance of your solar panel system. The inverter converts the direct current (DC) electricity generated by your solar panels into ...



### 200-watt Solar Panels

Go Power!'s most popular rigid solar panels are increasing from 190 to 200 watts! Featuring improved efficiency, these panels are now rated at 200-watts (9.6 amps). These more efficient solar panels are the same size as the previous ...

### What Size Inverter Do I Need for a 100 Watt Solar Panel

Generally, a 12v DC to 220v AC, 200-watt inverter would be able to run your AC-powered appliances with a 100-watt solar panel. Your 200-watt inverter can run a continuous supply of power to AC electricals like printers, coffee makers, lights, laptops, game units, blenders, and small TV sets, with a 100-watt solar panel.





[what size inverter for 200 watt solar panel](#)



Inverter Sizing Rule: The inverter should be capable of handling the maximum power output of the solar panels. Example Calculation: For a 200-watt solar panel system: Panel Output: 200 watts (DC) Inverter Size: A good rule of thumb is to select an inverter that

[Best Portable Solar Panels of 2024](#)

likely an option for you. We've got CNET's picks for the best solar panels below and a few others that could still be a A 200-watt solar panel can generate twice the power of a 100 -watt solar

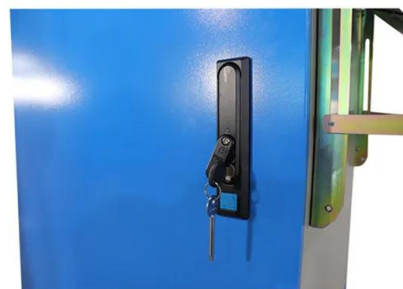


[The Best 400 Watt Solar Panels \(2024\)](#)

The Best 400- watt Solar Panels Reviewed Here are the top ten 400-watt solar panels currently available on the market. Take your time to review each solar panel so that you can identify the one that best suits your needs. #1 Xue-shelf Portable 400W Solar Panel

**What Size Inverter to Run a 200W Solar Panel?**

If you are going to use a 200 watt solar panel, you have to get a 250W inverter. A 100ah battery is also required if you want to store the solar power for use at night. How to Calculate Inverter ...





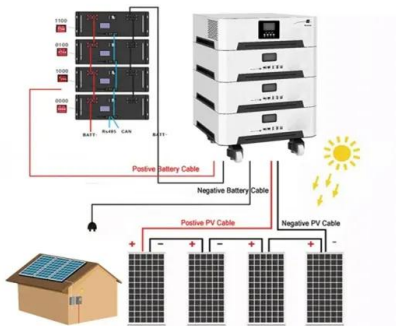
### The Best 300 Watt Solar Panels (2024)

The Best 300 Watt Solar Panels Reviewed Let's take a look at the best 300-Watt solar panels that are currently listed on the market. Find the right one that fulfills your energy needs. #1 DOKIO 300W Portable Foldable Solar Panel



### 200 Watt 12 Volt Monocrystalline Solar Panel

The Renogy 200 Watt 12 Volt Monocrystalline Solar Panel with PERC technology and half-cut cells includes a 10-year workmanship and 25-year 80% output warranty. Solar panels can be connected in series or in parallel to meet your electrical circuit size and



### **Solar Inverter Sizing to Improve Solar Panel Efficiency**

The efficiency of the inverter drives the efficiency of a solar panel system. Inverters change the Direct Current (DC) from solar panels into Alternating Current (AC), which is what we use in our homes and businesses. ...

### Best Solar Panels for Your Home in 2024

The best rooftop solar panels are efficient and have strong warranties. These are our favorite solar panels. over the course of an hour, a 400-watt solar panel will produce 400 watt-hours of





### 200-Watt Solar Panels: Are They Right For You?

200-watt solar panel kits may not be the best option for a large, 5 or 6 kW solar system, but are still useful for some types of solar projects. For example, if you are working on an off-grid solar project aimed at powering a tiny home or a solar shed, a 200-watt solar panel kit may be enough for your energy needs. 200-watt panels are also useful for camping and RV ...

### Best Solar Panels For Westinghouse Portable Power Stations (iGen160s)

In this post, I'll show you the best portable solar panels compatible with Westinghouse iGen160s, iGen200s, and iGen300s + how to connect MC4 solar panels. Jesse this is by far the best information presented in a clear concise manor. Im like Mary clueless but I



### What Size Solar Panel To Charge 200Ah Battery? (Incl. Calculator)

Battery capacity: 200ah Battery volts: 12v  
Battery type: Lithium Depth of discharge: 100%  
Charge controller: MPPT Desired charge time: 6  
peak sun hours "Enter CALCULATE button to get the result."  
Result: You need about 500 watt solar panel to charge a 12v 200ah lithium battery in 6 peak sun hours using an MPPT charge controller.

### Amazon : Renogy 200 Watt 12 Volt Portable

...

Amazon : Renogy 200 Watt 12 Volt Portable Solar Panel with Waterproof 20A Charger Controller, Foldable 100W Solar Panel Suitcase with Adjustable Kickstand, Solar Charger for Power Station RV Camping Off Grid : Patio, Lawn

...



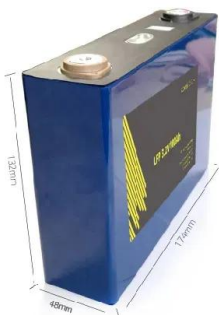


### How Many Solar Panels Do I Need For a 3000 Watt Inverter?

If your inverter needs 3000 watts, get ten 300 watt solar panels.  $10 \times 300 = 3000$  watts an hour right? Well it is not that simple. A 300 watt solar panel kit - we highly recommend the Renogy 300W Solar Kit - can yield up to 300 watts an hour.

### How to choose the right solar inverter

This guide will help you to choose the best solar inverter for your project. Use this handy reference table to compare the facts. Quickly see the difference in features, performance, ...



### Best Solar Inverters 2024

We review the best grid-connect solar inverters from the worlds leading manufacturers Fronius, SMA, SolarEdge, Fimer, Sungrow, Huawei, Goodwe and many more to decide who offers the highest quality and most reliable solar string inverters for residential and commercial solar.

### What Size Inverter to Run a 200W Solar Panel?

A 200 watt solar panel will not always generate 200 watts. Most of the time it will probably be less than that. But having a 250W inverter provides insurance that in case the panel does produce maximum output, your system can handle it.





### [Solar Inverter comparison chart](#)

These advanced inverters use energy from solar panels to power your home, charge a battery and provide emergency power during a blackout. We review the best hybrid inverters from the leading manufacturers for battery storage and ...



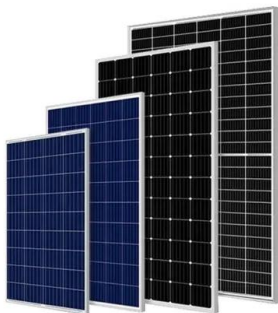
### [what size inverter for 200 watt solar panel](#)

Choosing the right inverter for a 200-watt solar panel system is essential for ensuring efficient energy conversion and reliable power delivery. This guide will help you understand the factors that influence inverter selection, including panel wattage, system ...



### **What Size Inverter for 200W Solar Panel? Do you Really Need it?**

The right inverter size is crucial for maximizing the efficiency and performance of a 200-watt solar panel system. Inverters convert the direct current (DC) electricity generated by solar panels into alternating current (AC) for ...



## Contact Us

---

For catalog requests, pricing, or partnerships, please visit:  
<https://www.vdbconstruction.co.za>