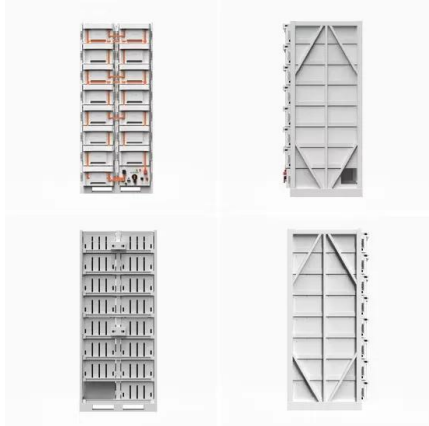


# **Bios system power fault protection**





## Bios system power fault protection

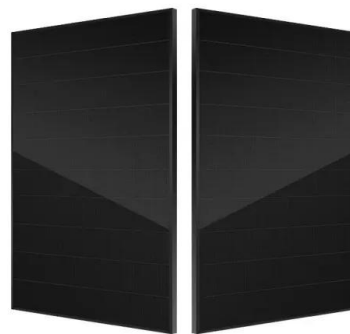


### System power fault protection ??? ??? msi bios o Smartadm

System power fault protection ??? ??? ? ?????  
System power fault protection ??? ??? msi  
???????????????? ?????????????? ?? ????? ??????????????  
???? «Asus» ????? ?????????????? ? ??????????  
???????????????? ?? ??????????. ????? ????????????????? ??  
???????

### ¿Qué Es System Power Fault Protection Y Cómo Funciona?

System power fault protection es una tecnología que se utiliza en sistemas de protección de energía para evitar daños en los equipos y preservar la energía eléctrica en caso de situaciones imprevistas o fallas en la red eléctrica. Este sistema tiene varios modos



### Z170A KRAIT GAMING R6 SIEGE BIOS ????, ??????

System Power Fault Protection.  
???????????????????????????? (??12V Power??),  
??, ??????????clear  
cmos, ??????, ??? ...



### Latence au démarrage (avant et pendant bios) sur pc neuf

J'ai un module : Power management Setup ou j'ai :  
Erp ready (disabled) Restore after AC power loss  
(power off) System Power Fault protection  
(Disabled) J'ai aussi un module boot ou j'ai : full  
screen logo display (enabled) bootup numlock



state (on) info block



**System power fault protection: ??? ??? ?  
?????**

System power fault protection (?????? ?? ?????  
???????? ????????) -- ????????, ?????????? ?  
????????????? ?????????????? ???????, ?????????  
????????????????? ??? ?????????????? ?????????? ???????  
????????????? ??? ?????????????????? ????????? ?  
????????????????????.

What is system power fault protection?

ErP mode is another name for a state of BIOS power management features that instructs the motherboard to turn off power to all system components, including USB and Ethernet ports meaning your connected devices will not charge while in a low power state.



**????bios????????????????**

?????:1.??BIOS????,??"PowerManagementSetup"  
??;2."PowerManagementSetup"???,??"PowerFail  
Warning"??,?????"Enabled";3. ...







????? ?????? MSI MAG Z590 TORPEDO. ?????? 2

Restore after AC Power Loss System Power Fault Protection USB Standby Power at S4 / S5 2.7.  
????? BIOS CSM / UEFI Mode ??????????  
????????????? BIOS ? Legacy Mode (CSM) 2.8.  
????????????? Wake Up Event Setup ?????? ??????????  
???????? ??????:



?????????check system power error??????.?

?????????????????BIOS?????,BIOS?????????????????  
?????????????????,?????,???BIOS,?????????????????



bios 'system power fault protection' nedir?

arkadaslar bios da böyle bir ayar var  
1620318888 arkadaslar bios da böyle bir ayar  
var disable olarak ayarli kendisinden bu ayar tam  
olarak ne ise yariyor?



LFP 12V 100Ah

Lower cost larger system

20Kwh  
30Kwh

★★★★★

Verified Supplier

**System Power Fault Protection enabled or disabled? : ...**

My MOBO is the Z370 SLI Plus, and there's a feature called System Power Fault Protection. Now I've had my pc for a while now but haven't really explored the BIOS settings much. But I found ...



### MSI INTEL 500 SERIES USER MANUAL Pdf Download

Page 22 System Power Fault Protection Enables or disables the protection (shut down status) for system when detecting abnormal voltage input. [Enabled] Protect the system from unexpected power operation and remain the shut down status.



### System power fault triggered due to power surge detected during

"System power fault triggered due to power surge detected during previous boot up to protect system from unstable PSU" And I have to F1 to enter BIOS or any key to jsut continue to Windows. My MB is MSI B450 Tomahawk Max. And that power protection

??cpu?????,?????????

System Power Fault Protection  
????????????????????,????? (????)? [Enabled]  
????????,????????????????????????????? ...



### BIOS And Software

BIOS MSI is using its Click BIOS 5 firmware which we have seen numerous times before including in our MSI Other settings such as power management including system power fault protection, ErP





### A comprehensive review of DC fault protection methods in HVDC

High voltage direct current (HVDC) transmission is an economical option for transmitting a large amount of power over long distances. Initially, HVDC was developed using thyristor-based current source converters (CSC). With the development of semiconductor devices, a voltage source converter (VSC)-based HVDC system was introduced, and has been widely ...



### Regarding X570 Tomahawk System Power Fault Protection

Then when I assemble back something went terribly wrong as I saw the cpu temperature soar to 110c normally it was 38-40c, and I immediately power down to check and power on again the same thing happen so I immediately shutdown.

### Restore after AC Power Loss [Power Off], System Power Fault Protection

[Disabled] The USB devices will be unavailable under legacy mode. f Power Management Setup Sets system Power Management of ErP and AC Power Loss behaviors. Press Enter to enter the sub-menu. fErP Ready [Disabled] Enables or disables the system power consumption according to ErP regulation.



### Power System Protection

Adaptive power protection systems are desirable to properly identify fault current contributions from distributed generation units, as well as fault distance protection and coordination settings. Loss of mains protection settings must be revisited so that distributed generation can support transmission and distribution network operation under contingencies.



System power fault protection ??? ??? msi

System power fault protection ??? ??? msi ,  
?????????: 10.10.2024 ?????? ?????? ??????  
?????? ?????????, ??? ? ????????????? ??????????  
????????????? ?????????? ?????????????????? ??????????  
????????????????? ?????????????? UEFI-?????????????



**System Power Fault Protection: ¿Qué Es Y Cómo Funciona?**

System power fault protection en el BIOS tiene un algoritmo de operaci n especial que ayuda a prevenir da os por errores de alimentaci n. Cuando el BIOS detecta inestabilidad en la alimentaci n, toma medidas autom ticamente para proteger el sistema. Por

**Motherboards that protects from power failure/surges**

I heard that ASUS have anti-surge protection and so as well as GIGABYTE under their Ultradurable feature. Now my question is: Does Asrock and MSI have this kind of "anti-surge protection" feature? :??: I am aware of MSI's Military Class II feature but i cant seem to find a particular feature



**System Power Fault Protection enabled or disabled? : ...**

My MOBO is the Z370 SLI Plus, and there's a feature called System Power Fault Protection. Now I've had my pc for a while now but haven't really explored the BIOS settings much. But I found this feature disabled by default. The description for the feature says



## Contact Us

---

For catalog requests, pricing, or partnerships, please visit:  
<https://www.vdbconstruction.co.za>