

Calculation of the area of each photovoltaic panel





Overview

How do you calculate energy production per solar panel?

To calculate the energy production per PV module, use the formula: Energy (kWh) = Area × Solar panel yield × Annual average solar radiation on panels × Performance Ratio The performance ratio (PR) is typically a default value of 0.75, but BONJOUR SOLAR Solar Panels can reach up to 0.85 for higher efficiency.

How to calculate solar panel output?

To find the solar panel output, use the following solar power formula: output = solar panel kilowatts × environmental factor × solar hours per day. The output will be given in kWh, and, in practice, it will depend on how sunny it is since the number of solar hours per day is just an average. How to calculate the solar panels needs for camping?

.

How do you calculate solar power?

To figure out how much solar power you'll receive, you need to calculate solar irradiance. This can be calculated using: Where: For example, a PV panel with an area of 1.6 m², efficiency of 15% and annual average solar radiation of 1700 kWh/m²/year would generate: 2. Energy Demand Calculation Knowing the power consumption of your house is crucial.

How do you calculate solar panel efficiency?

Solar panel efficiency refers to the amount of sunlight a solar panel can convert into usable electricity. It is calculated by dividing the amount of electricity produced by the solar panel by the amount of sunlight that strikes the panel. The efficiency formula is as follows: Efficiency (%) = [(Pmax ÷ Area) ÷ 1000] × 100% Where:.

How do you calculate watt-hours of a solar panel?



To calculate the daily watt-hours, you can use the following formula: Daily watt hours = Average hours of sunlight × solar panel watts × panel efficiency
For example, if you live in an area with 4 hours of peak sunlight and your panel has a 200-watt rating, the solar panel output would be: Daily watt hours = $4 \times 200 \times 0.85 = 680\text{Wh}$.

What does area mean on a solar panel?

Area refers to the length multiplied by the width of the solar panels, measured in square meters. 1000 is a conversion factor to convert power output per unit area from watts per square meter to percent. For example, if you have a solar panel with a maximum power output of 200W and a surface area of 1.6 square meters, the efficiency would be:



Calculation of the area of each photovoltaic panel



59 Solar PV Power Calculations With Examples Provided

25. Solar Panel Yield Calculation. Solar panel yield refers to the ratio of energy that a panel can produce compared to its nominal power: $Y = E / (A * S)$ Where: Y = Solar panel yield; E = ...

Solar Panel Calculator , Solar PV System Calculator

The simple PV array size calculator below roughly estimates the amount of space a solar power system will take up on a roof and the amount of power the system might generate. The given ...



Photovoltaic (PV)

Calculation of the output of a system. Example Calculation. 120 solar modules, each of 250 W p and area of 1.67 m² are connected to form a PV system. The efficiency of the system is 0.75, and the average annual solar ...

Solar Panel kWh Calculator: kWh Production Per Day, ...

The first factor in calculating solar panel output is the power rating. There are mainly 3 different classes of solar panels: Small solar panels: In a 5.50 peak sun hour area, a 300-watt solar panel will produce 1.24 kWh per day, 37.13 ...



How to calculate the surface area required by solar panels

Step 5: Calculate Required Surface Area. Panel Dimensions: Standard solar panels are typically around 1.7 meters by 1 meter (1.7m²). Total Surface Area: Multiply the ...



Solar Panel Wind Load Calculation ASCE-7-16 , SkyCiv

A fully worked example of Ground-mounted Solar Panel Wind Load and Snow Pressure Calculation using ASCE 7-16. With the recent trends in the use of renewable ...



Solar Cell Efficiency

The efficiency is the most commonly used parameter to compare the performance of one solar cell to another. Efficiency is defined as the ratio of energy output from the solar cell to input ...





[Solar Panel Series & Parallel Calculator](#)

How to Use This Calculator. 1. Find the technical specifications label on the back of your solar panel. Note: If your panel doesn't have a label, you can usually find its ...



[Solar Panel Power Calculator](#)

Solar Panel Calculator is an online tool used in electrical engineering to estimate the total power output, solar system output voltage and current when the number of solar panel units ...

[Solar Panel Sizes and Wattage Explained](#)

Solar Panel Size. It focuses on maximum electricity generation and overall capacity rather than the quantity of panels. To calculate the required system size, multiply the number of panels by the output. For example, a 6.6 ...



A Guide on Calculating Area Required for Solar Panel ...

How much space do I need to reserve on my rooftop or the ground for the panel installation? The installation area of the solar panel is also based on whether you need rooftop solar panel installation or on the ground. ...



Solar Panel Calculator

How Do I Calculate How Many Solar Panels I Need? Well, it is indeed very important to know the exact number of solar panels because it helps you to calculate solar power to run the load you ...



[Solar Panel Maximum Voltage Calculator](#)

How to Use This Calculator. 1. Find the technical specifications label on the back of your solar panel. For example, this is the label on the back of my Renogy 100W 12V Solar Panel.. Note: If your panel doesn't have a label, ...

Calculating Solar PV String Size - A Step-By-Step Guide

One aspect of designing a solar PV system that is often confusing, is calculating how many solar panels you can connect in series per string. This is referred to as string size. If you are ...



How Many Solar Panels Do I Need? Solar Panel Calculator

The following formula will help you work out the output of each panel: Solar panel watts x average hours of sunlight x 0.75 = daily watt-hours . If you don't have enough roof ...



Parameters of a Solar Cell and Characteristics of a PV Panel

Related Post: How to Design and Install a Solar PV System? Working of a Solar Cell. The sunlight is a group of photons having a finite amount of energy. For the generation of electricity by the ...



[Solar Panel Tilt Angle Calculator](#)

How to Find Your Ideal Solar Panel Angle. Scroll to the top of this page to use our Solar Panel Tilt Angle Calculator. Simply enter your address and it will provide the optimal angles for each ...

[Solar Energy Calculator and Mapping Tool](#)

These solar panels correspond to the majority of rooftop-installed solar panel technology. PVGIS does not differentiate between polycrystalline and monocrystalline cells. For example, if you ...



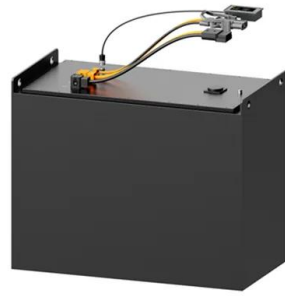
[How to Calculate Solar Panel KWp \(KWh Vs. KWp\)](#)

To calculate the KWp (kilowatt-peak) of a solar panel system, you need to determine the total solar panel area and the solar panel yield, expressed as a percentage. Here are the steps involved in this calculation: 1. ...



How to calculate the annual solar energy output of a photovoltaic ...

r is the yield of the solar panel given by the ratio : electrical power (in kWp) of one solar panel divided by the area of one panel. Example : the solar panel yield of a PV module of 250 Wp ...



Solar Panel Efficiency Calculator and Formula - Dot Watts®

how to use solar efficiency calculator? 1 - Enter solar panel maximum power output (P max).For example, Enter 100 for a 100 watt solar panel. The value should be ...

Shade Calculator

Knowing the minimum angle of incidence of sunlight during the year, it is possible to determine the distance between successive rows of photovoltaic panels. 25 ° was taken as the value of ...



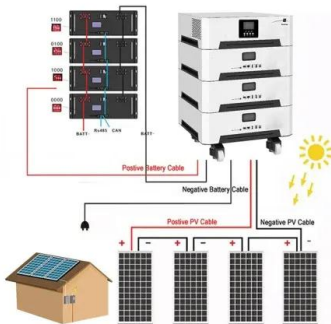
Calculating Energy Production of a Solar Panel System

Calculating the annual electricity production of a solar panel system in kilowatt-hours (kWh) involves several factors, including the system's size, the efficiency of the solar ...



[Solar Irradiance Calculator \(with Map\)](#)

For instance, if your solar panels will be tilted at 30° from horizontal, you'd enter the number 30. Note: If you don't know which angle to tilt your panels to, you can use our solar ...



The Complete Guide to Calculating Solar Panel Needs

To calculate the total load wattage, you need to multiply the power consumed by each device by the number of usage hours per day. This will give you the total kilowatt-hours (kWh) per day for each appliance. Frequently Asked ...

Contact Us

For catalog requests, pricing, or partnerships, please visit:
<https://www.vdbconstruction.co.za>