

Can photovoltaic panels have positive and negative contact

Solar





Overview

The article explains how to determine the positive and negative terminals of a solar panel, crucial for proper installation to avoid energy wastage. Methods include examining the diode and using a voltmeter to measure voltage. It also discusses checking solar panel polarity and fixing reverse polarity issues.

The polarity of the solar panel is a crucial factor to consider during installation. If your system is not configured properly, you could end up wasting energy and have to buy more power from the grid, which hurts your wallet.

Struggling to understand how solar + storage systems actually work?

Looking to build or buy your own solar power system one day but not sure what you need?

Just looking to learn more about solar, batteries and electricity?

Join.

Most modern high-power solar modules are made with wire leads that have MC4 connectors on the ends. They use these MC4 connectors because they make the process of wiring your solar array much simpler and faster. So.

Are solar panels positive or negative?

Solar panels are similar to batteries in that they have two terminals: positive and negative. A series connection is made by connecting the positive terminal of one panel to the negative terminal of another. Connecting at least two solar panels in this manner becomes a PV source circuit. Which wire is positive on solar panels?

.

Do solar panels have positive and negative terminals?

Solar panels feature positive and negative terminals. Wiring solar panels in series means wiring the positive terminal of a module to the negative of the following, and so on for the whole string. This wiring type increases the output



voltage, which can be measured at the available terminals.

What happens if you wire solar panels together incorrectly?

Wiring solar panels together incorrectly can lead to damaging or destroying valuable components — it can even be life-threatening. The total output voltage and current of your array are determined by how you connect the individual PV modules to each other and to the solar inverter, charge controller, or portable power station.

How to wire solar panels in parallel or series?

Connect the negative terminal of the first panel and the positive terminal of the second panel and connect to the corresponding terminals in solar regulator's input. The solar regulator will detect the panels and start to charge the battery during sunlight. Wiring solar panels in parallel or series doesn't have to be an either/or proposition.

How do I know if my solar panel is bad?

Put the red positive meter lead on one side and the black negative lead on the other. This measures across the terminals or wires of the solar panel. You must set the volt meter to read DC Volts. If there's a negative number displayed on the voltmeter then that means that the leads are pointing in the wrong direction.

How do I know if my solar panel is polar?

Even when inside a building, a simple voltage reading will reveal the polarity of a solar panel. Put the red positive meter lead on one side and the black negative lead on the other. This measures across the terminals or wires of the solar panel. You must set the volt meter to read DC Volts.



Can photovoltaic panels have positive and negative contact



Why do we use a PV disconnect that breaks both the positive and

For the negative, since it's DC, would I have the PV neg of the inverter go to the neg SSR L1 and have the neg SSR L2 go back to the panels? Ideally, my goal is to figure ...

What are photovoltaic cells in solar panels?

The energy knocks electrons loose so they can flow freely and produce a difference in electric potential energy, or voltage. The flow of electrons creates electric current. Solar cells have ...



How Solar Photovoltaic Cells Work: From Sunlight to ...

Experimental and Niche PV Cells: Efficiency peaks at nearly 50%. Silicon-based PV Cells: Dominating the market at 95% with a lifespan of over 25 years, maintaining 80% efficiency. Perovskite Solar Cells: Show a ...



The Ultimate Guide to MC4 Connectors: Role, ...

Connect the positive (+) terminal of one solar panel to the negative (-) terminal of the adjacent panel using a cable with male and female MC4 connectors. You can check our last blog on how to identify the positive ...

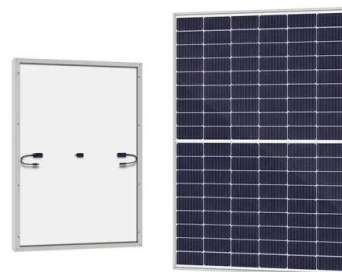


Identifying Positive Solar Panel Connectors: A Step-by ...

Know how to identify positive solar panel connectors with this step-by-step guide. From using markings and coloring to testing connections with a multimeter, we cover all the essential tips to ensure your solar panel system ...

How to find and repair ground faults in solar PV systems

A PV string circuit without a ground fault will have open circuit voltage (Voc) between positive and negative conductors. It will have zero volts from positive to ground and from negative to ...



[Solar Panel Connectors and Cables](#)

One wire is the DC positive (+) and the other is the DC negative (-). Generally, the female MC4 connector is associated with the positive lead and the male connector is associated with the negative lead.





Solar Panel Wiring Basics: Complete Guide & Tips to ...

Key concepts and items required for solar panel wiring Solar Panel String. The "solar panel string" is the most basic and important concept in solar panel wiring. This is simply several PV modules wired in series or ...

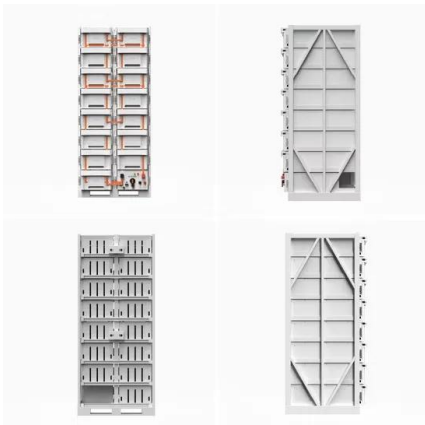


Photovoltaic Cells , How it works, Application & Advantages

How Photovoltaic Cells Work. Photovoltaic cells are essentially made of a semiconductor material, usually silicon, which is the second most abundant element on earth. ...

Photovoltaic Cell Explained: Understanding How Solar Power Works

By capturing photons from sunlight and initiating an electrical current within these layers, photovoltaic cells harness solar energy, offering a sustainable power source. Photovoltaic ...



Do Solar Panels Need Blocking or Bypass Diodes?

I recently installed some used PV panels on a 24 Volt PV / Inverter system. The panels have four paralleled diodes in series with both their negative and their positive ...



A Guide to Solar Wires, Cables and Connectors

How to Use MC4 Connectors in a Solar Panel Series. Connecting MC4 connectors to a solar panel series is easy. Female connectors are positive and male connectors are negative. ...



[Mixing solar panels - Dos and Don'ts](#)

Connecting in series means joining the positive terminal of a solar panel to the negative terminal of the next solar panel until eventually you are left with one free positive and one free negative ...

Unveiling Solar Panels' Environmental Impact--Pros ...

Solar energy is presently on par with conventional energy sources in terms of accessibility and affordability. Solar Energy Industries Association data indicates that the price of solar panels has decreased by 99 ...



The Ultimate Guide to MC4 Connectors , Solar Panel ...

Connect the positive (+) terminal of one solar panel to the negative (-) terminal of the adjacent panel using a cable with male and female MC4 connectors. You can check our last blog on how to identify the positive ...



Solar Simplified: Easy-to-Understand Guide to Voltage, Amperage ...

Understanding wattage is essential for determining how much energy a solar panel can produce and, consequently, how much power your devices or appliances can draw ...



Solar energy technology and its roles in sustainable development

3 The perspective of solar energy. Solar energy investments can meet energy targets and environmental protection by reducing carbon emissions while having no ...

The Positive and Negative Environmental Impacts of Solar Panels

Here we will examine the positive and negative environmental impacts of solar panels and what the future has in store for the solar energy industry. Negative Environmental Impacts Solar ...



How to wire solar panels , Essentra Components UK

From solar panel wiring basics to more complex photovoltaic wiring diagrams: a solar panel wiring guide to series and parallel. Solar panels are similar to batteries in that ...



Are Solar Panels Beneficial for the Environment?

By ensuring responsible handling of these materials, we can continue to enjoy the benefits of solar energy while minimising its environmental impact. 4) Life-Cycle Global ...



Solar Energy Development Environmental Considerations

Cultural and paleontological artifacts and cultural landscapes may be disturbed by solar facilities. Additionally, socioeconomic impacts (both positive and negative) may be associated with solar ...

Which Solar Panel Connector Is Positive? (Types Listed)

What Happens If You Hook Up A Solar Panel Backwards? If a solar panel is wired backward, it can still work. It will, however, not work as effectively. All the components in a solar system should be wired using the ...



The Complete Guide to Solar Panel Wiring Diagrams

(Source: Alternative Energy Tutorials) Parallel connections require the opposite: you wire all the positive terminals to the next positive input and negative-to-negative for each panel on the string.. With parallel ...



Identify Positive Solar Panel Connectors , PV Connector , A Step ...

Expose the solar panel to sunlight: Ensure the solar panel is facing the sun and producing electricity during the test.. Connect the probes: Touch the red probe to the ...



The Complete Guide to Solar Panel Wiring Diagrams

Like many electrical components, solar panels have two terminals: negative and positive. (Source: Alternative Energy Tutorials) Series connections require you to wire the positive and negative terminals of each ...

[Solar Panel Connectors and Cables](#)

The connectors can be separated but it requires a special MC4 unlocking tool. The MC4 connector consists of the contact and the plastic housing. The contact will determine the ...



Solar panel wiring basics: How to wire solar panels

When stringing in series, the wire from the positive terminal of one solar panel is connected to the negative terminal of the next panel and so on. When stringing panels in series, each additional panel adds to the total voltage (V) of the ...



Blocking Diode and Bypass Diodes in a Solar Panel Junction Box

A diode is a unidirectional semiconductor device which only passes current in one direction (forward bias i.e. Anode connected to the positive terminal and cathode is ...



Operation and physics of photovoltaic solar cells: an overview

Solar energy is considered the primary source of renewable energy on earth; and among them, solar irradiance has both, the energy potential and the duration sufficient to ...

Contact Us

For catalog requests, pricing, or partnerships, please visit:
<https://www.vdbconstruction.co.za>