

Can photovoltaic panels only be installed on roofs





Overview

Even a roof that doesn't fit the ideal requirements can still be suitable for solar panels. Solar installers will provide slightly differently advise about the most suitable way to maximise energy generation. They will also recommend additional technologies you can use to boost your supply. If in doubt, find a few.

The best type of roof for solar panels is a south facing roof as they tend to generate the most electricity from solar panels. South facing roof panels.

While it isn't recommended to have solar panels installed on a north facing roof in the UK, you can still have them installed if you wish but they won't perform as well - as we saw from the table.

Whether your roof is big enough for solar panels depends on the size of the array you want installed. You can also look at our other resources to see how many solar panels you may need for your particular house size and roof. For a.

The best roof pitch for solar panels is between 30-40°, but the angle of the roof can fall outside of this range and generate electricity effectively. Solar panels can still absorb sunlight even.



Can photovoltaic panels only be installed on roofs



Can Solar Panels Be Installed On My Roof? , Summit Energy

Pitch and Shape: While solar panels can be installed on roofs with different pitches and shapes, steeper roofs tend to have higher energy production due to increased ...

New planning rules to boost solar rollout and slash energy bills

Changes to permitted development rights rules will mean more homeowners and businesses will be able to install solar panels on their roofs without going through the ...



Is My Roof Suitable for Solar Panels? , The Ultimate Guide

In order to have solar panels installed on your property, your roof needs to be strong and secure enough to hold the weight of the panels. Prior to an installation, all certified ...



How close to the edge of your roof can your solar panels go?

In the past I've written about solar panel clamping zones which determine where, on a solar panel's edge, you can place the clamps that attach the modules to their mounting ...

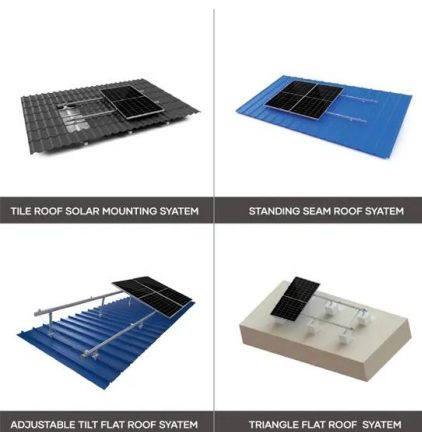


Can Solar Panels Be Installed On Flat Roofs? , Bright Spark

It is possible to install solar panel systems on a flat roof, so why not give it a try? Discover more about flat roof solar and the ways in which it can be superior to traditional on ...

Can I Install Solar Panels On a Metal Roof?

Metal tile roofs: Quick Mount PV also manufactures a Tile Replacement Mount to make installing solar on tile roofs easier, including metal tile roofs. Tile Replacement Mount ...



Can You Install Solar Panels on Conservatory Roofs?

Additionally, the panels have a lifespan of 25 years or more, while plastic or polycarbonate roofing can only last around 10-12 years. Some companies that offer ...



Can I put solar panels on my shed roof?

Solar Photovoltaic (PV) panels that generate electricity can effectively be installed on the roof of any structure that is robust enough to take their weight. But while a ...



Guest post: which roofs are (and aren't) suitable for solar panels?

Perhaps surprisingly, green roofs are actually well suited for PV - together they make up a biosolar roof. The solar panels do need to be installed at the same time as the ...

Can Solar Panels Be Installed on a Slate Roof?

These roofs are bad for solar: all-wood roofs, north-facing roofs, and low-sunlight roofs. Wood and solar panels can cause fires, but wood roofs are rare. North-facing roofs make less electricity, but solar panel trackers can help. All UK ...



What Solar Panel Orientation is best in the UK?

Many solar panel installers advise not to install on roofs more than 45° from south (i.e. between south west and south east). Others say it's fine as long as you install the additional technologies.



How are solar panels installed? Our guide to solar panel roof

In fact, your roof may be in more need of TLC than the solar panels you want installed on it. So first, a professional surveyor will check your roof and rafters to ensure that a solar panel ...



[Can I install solar PV on asbestos roofing?](#)

The short answer to the question of whether you can install solar PV panels on an asbestos roof, is yes. However, drilling into an asbestos roof is not recommended if you can at all avoid it. ...

Can Solar Panels Be Installed On A Garage Roof? , Eco Happy

Certified solar panel installation companies can then proceed with installing the mounts, which will be attached to the roof rafters to provide a sturdy base for the solar panels. ...



Installing Solar Panels on Different Roof Types

Solar panels can be installed on just about any roof material, but the details of the installation may vary slightly from roof to roof. With clay tile roofs, this area can only be adequately accessed by lifting tiles. are topped ...





Building regulations for solar panels: explained [UK, 2024]

Installers must only fit solar panels if they're sure your roof can hold their weight, and carry on doing so for up to 40 years. Fortunately, most roofs in the UK are built to hold much more than a solar panel system, which ...



Can Solar Panels Be Installed on a Flat Roof in the UK?

Flat roof solar panel systems take up more space as the panels need to be spaced out in order not to overshadow each other. This means that each row takes up more ...

Solar panel myths: five common concerns about solar ...

Solar photovoltaic (PV) panels can be installed on a wide range of homes. We've heard from people installing solar panels on bungalows and terraces, as well as semi-detached and detached houses. If your main house roof is unsuitable (a ...



A step-by-step guide to installing solar panels

3. Make space for the solar panel accessories (solar inverter, cables and solar batteries, if desired), for instance in a plant room. 4. Plan a day for installation. 5. Erect the scaffolding (this can be done by your supplier or by ...



Solar Panels on Flat Roofs: Costs, Pros & Cons ...

Flat roof solar panel mounting is usually done with ballasts, which can also incur extra costs during purchase. Ballasts can be around £60 to £120 per kilowatt on average but prices can vary based on sizes and whether ...



Can You Have Solar Panels On A North Facing Roof?

It only takes 30 seconds 100% free and with no obligation . many homeowners are beginning to ask the question of whether or not solar panels can be installed ...

The Best Roof Materials for Solar Panels - 5 Common Materials

When a solar panel array is installed on a tile roof, they will need to be attached to brackets that will lift the panels above the roof. The distance that the panels must be raised ...



Can Solar Panels Be Installed on a Slate Roof?

Benefits of Solar Panels on Slate Roofs . Despite the challenges, there are distinct benefits to installing solar panels on slate roofs: Enhanced Property Value: Combining ...



Solar panels: Are they worth it? - MoneySavingExpert

If you want to install panels on a flat roof it could cost more, as you may need fixings to hold the panels in place. Heatable: £500 off (it only offers one type of solar panel). ...

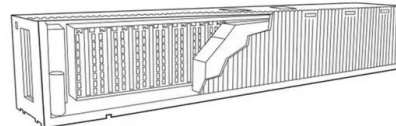


Can You Put Solar Panels On A Conservatory Roof?

More than 1.3 million UK households now have solar panels. A typical three-bedroom home will save up to £454 a year on its energy bill with a solar panel system. Solar panels can help you cut your carbon emissions by ...

Is my roof suitable for solar panels? [UK checklist]

This is because a solar panel system usually weighs about 20kg per square metre, which the great majority of roofs can hold. However, flat roofs may not always be strong enough for solar panels. Drilling into a flat roof can ...



Where to Install Solar -- Instead of on the Roof , Modernize

Many of the best unique solar panel placement ideas integrate seamlessly into a home's exterior. Ready to dive in? Here are some of our favorite ways to install solar panels ...



[The Ultimate Guide To Flat Roof Solar Panels](#)

The ideal pitch for a Solar Panel is around 30 degrees off the horizontal. Simply because this allows the panels to gain more exposure from the sun throughout the entire day. When installing Solar panels on a flat roof, this ...



Can Solar Panels Be Installed on a Slate Roof? , 2024

Wooden roofs are fire hazards when paired with solar panel installations, but fortunately this type of roof isn't common. Solar panels on north-facing roofs usually don't ...

Solar Panels on Metal Roof (Advantages + Disadvantages)

If you have to repair only part of the roof, finding the exact metal is challenging. Solar panels are typically installed using special brackets that are screwed or bolted into the ...



Contact Us

For catalog requests, pricing, or partnerships, please visit:
<https://www.vdbconstruction.co.za>