

# **Can photovoltaic panels short-circuit and not generate electricity**





## Overview

---

A photovoltaic (PV) cell, commonly called a solar cell, is a nonmechanical device that converts sunlight directly into electricity. Some PV cells can convert artificial light into electricity. Sunlight is composed of photons, or particles of solar energy. These photons contain varying amounts of energy that correspond to the.

The movement of electrons, which all carry a negative charge, toward the front surface of the PV cell creates an imbalance of electrical.

The efficiency that PV cells convert sunlight to electricity varies by the type of semiconductor material and PV cell technology. The efficiency of commercially available PV panels.

The PV cell is the basic building block of a PV system. Individual cells can vary from 0.5 inches to about 4.0 inches across. However, one PV cell can.

When the sun is shining, PV systems can generate electricity to directly power devices such as water pumps or supply electric power grids. PV systems can also charge a battery to provide.

An model of an ideal solar cell's p-n junction uses an ideal (whose photogenerated current increases with light intensity) in parallel with a (whose current represents losses). To account for , a resistance and a series resistance are added as . The resulting output current equals the photogenerated curr.

Can a photovoltaic cell produce enough electricity?

A photovoltaic cell alone cannot produce enough usable electricity for more than a small electronic gadget. Solar cells are wired together and installed on top of a substrate like metal or glass to create solar panels, which are installed in groups to form a solar power system to produce the energy for a home.

What are photovoltaic (PV) solar cells?

In this article, we'll look at photovoltaic (PV) solar cells, or solar cells, which are electronic devices that generate electricity when exposed to photons or



particles of light. This conversion is called the photovoltaic effect. We'll explain the science of silicon solar cells, which comprise most solar panels.

Are solar and photovoltaic cells the same?

Solar and photovoltaic cells are the same, and you can use the terms interchangeably in most instances. Both photovoltaic solar cells and solar cells are electronic components that generate electricity when exposed to photons, producing electricity.

How does a solar PV system generate electricity?

Solar PV systems generate electricity by absorbing sunlight and using that light energy to create an electrical current. There are many photovoltaic cells within a single solar module, and the current created by all of the cells together adds up to enough electricity to help power your home.

What is the photovoltaic effect?

This conversion is called the photovoltaic effect. We'll explain the science of silicon solar cells, which comprise most solar panels. A photovoltaic cell is the most critical part of a solar panel that allows it to convert sunlight into electricity. The two main types of solar cells are monocrystalline and polycrystalline.

Can a solar panel be damaged by a short circuit?

In trying to measure the current output from a solar panel I've inadvertently short circuit the panel. Did I damaged the panel?

How can I test if everything is ok?

Does it still produce voltage when light is shone on it?

I think the is high enough that it can't be damaged by short circuit. In fact, solar cells are rated by their .



## Can photovoltaic panels short-circuit and not generate electricity

---



### How do solar cells work?

Just like the cells in a battery, the cells in a solar panel are designed to generate electricity; but where a battery's cells make electricity from chemicals, a solar panel's cells generate power by capturing sunlight instead.

### Short Circuit Current Contribution of a Photovoltaic Power Plant

In this paper the authors describe the behavior of a photovoltaic power plant equipped with central inverters during different types of short circuits. The next chapter ...

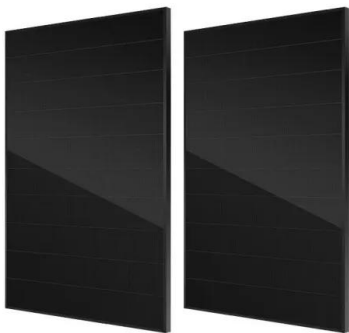


### How do solar cells work? Photovoltaic cells explained

The conversion of sunlight, made up of particles called photons, into electrical energy by a solar cell is called the "photovoltaic effect" - hence why we refer to solar cells as ...

### How Solar Cells Work

The solar panels that you see on power stations and satellites are also called photovoltaic (PV) panels, or photovoltaic cells, which as the name implies (photo meaning "light" and voltaic meaning "electricity"), convert ...

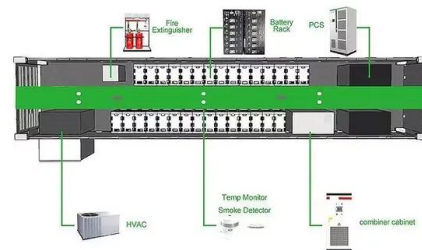


### [Photovoltaic \(PV\) Solar Panels](#)

Under typical UK conditions, 1m<sup>2</sup> of PV panel will produce around 100kWh electricity per year, so it would take around 2.5 years to "pay back" the energy cost of the panel. PV panels have an ...

### How To Store Electricity From Solar Panels - Storables

Higher efficiency panels are more expensive but can generate more electricity in a given space. Solar Panel Output: The second factor to consider is the solar panel output, which determines how much energy can be ...



### Solar Panel Specifications Explained , Electrical Academia

The most important solar panel specifications include the short-circuit current, the open-circuit voltage, the output voltage, current, and rated power at 1,000 W/m<sup>2</sup> solar radiation, all ...



## Theory of solar cells

Overview  
Equivalent circuit of a solar cell  
Working explanation  
Photogeneration of charge carriers  
The p-n junction  
Charge carrier separation  
Connection to an external load  
See also

An equivalent circuit model of an ideal solar cell's p-n junction uses an ideal current source (whose photogenerated current increases with light intensity) in parallel with a diode (whose current represents recombination losses). To account for resistive losses, a shunt resistance and a series resistance are added as lumped elements. The resulting output current equals the photogenerated curr...

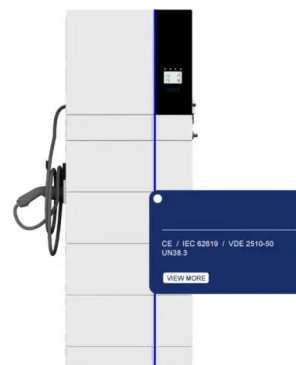


### [Solar system fault finding guide & solutions](#)

Solar panel fault-finding guide including examples and how to inspect and troubleshoot poorly performing solar systems. Common issues include solar cells shaded by ...

## Parallel Connected Solar Panels For Increased Current

A panels short-circuit current depends on a number of factors such as the area of the solar panel, the irradiance, temperature, etc. But a panels I SC can be as much as 10% higher than the ...



## Photovoltaic (PV) Cell: Working & Characteristics

These parameters are often listed on the rating labels for commercial panels and give a sense for the approximate voltage and current levels to be expected from a PV cell or panel. FIGURE 6 I-V



curve for an example PV cell ( $G = 1000 \text{ W/m}^2$  ...



### How do solar cells work? Photovoltaic cells explained

PV cells, or solar cells, generate electricity by absorbing sunlight and using the light energy to create an electrical current. The process of how PV cells work can be broken down into three basic steps: first, a PV cell absorbs ...



### Solar Panels Simplified: A Beginner's Guide to Solar Energy

Exploring solar energy can be both exciting and challenging for beginners. Curious about how solar panels function? This current flows through the panel's electrical ...

### Short-Circuit Current

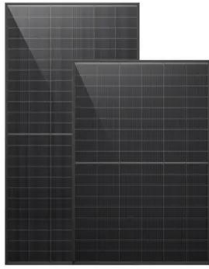
The short-circuit current is the current through the solar cell when the voltage across the solar cell is zero (i.e., when the solar cell is short circuited). Usually written as  $I_{SC}$ , the short-circuit current is shown on the IV curve below.





### Is there a solar panel fire hazard? How can it be avoided?

So a house equipped with properly installed solar panels will not catch fire. In any event, there are a few basic precautions you can take just in case. Read on to find out. ...



### Solar Photovoltaic (PV) System Circuit Protection Guide

What is a Solar Panel? An individual panel is made up of a number of photovoltaic cells connected in series. The voltage output of a Solar Panel is defined by the number of individual ...



### Parameters of a Solar Cell and Characteristics of a PV Panel

Its ability to convert sunlight into electricity without an intermediate conversion makes it unique to harness the available solar energy into useful electricity. That is why they are called Solar ...



### Solar Panel Low Short Circuit Current: Reason and Fix

To sum it up, Low Short circuit current can either happen if your solar panel is not getting sunlight properly or something is broken with the panel like diodes or loose mc4 connector. Always ...





## ESS



## Characteristics of a Solar Cell and Parameters of a Solar Cell

Key learnings: Solar Cell Definition: A solar cell (also known as a photovoltaic cell) is defined as a device that converts light energy into electrical energy using the ...

## Solar panel short circuit

No - you will not damage a solar panel by shorting it. Solar panels are designed to be continuously operated at very very close to their short circuit current. A good quick test of a solar panel is to run it short circuited into ...



## How do solar panels work? Solar power explained

Solar energy is the light and heat that come from the sun. To understand how it's produced, let's start with the smallest form of solar energy: the photon. Photons are waves ...

## Calculation & Design of Solar Photovoltaic Modules & Array

When we connect N-number of solar cells in series then we get two terminals and the voltage across these two terminals is the sum of the voltages of the cells connected in series. For ...





### Photovoltaic Panel Converts Sunlight into Electricity

A typical 12 volt photovoltaic solar panel gives about 18.5 to 20.8 volts peak output (assuming 0.58V cell voltage) by using 32 or 36 individual cells respectively connected together in a ...

### Theory of solar cells

Photons in sunlight hit the solar panel and are absorbed by semi-conducting materials. Electrons electricity. Photogeneration of charge carriers. When a photon hits a piece of through the ...

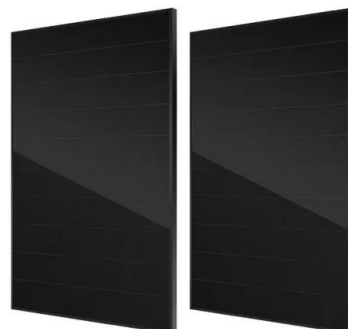


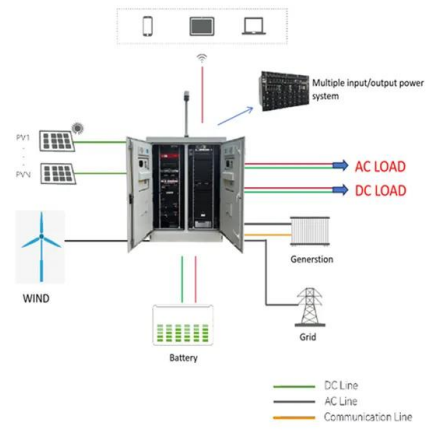
### Solar panel short circuit

While it is conceivable that a solar panel may be damaged while running under short circuit, if it is then it is faulty and would also have been damaged by operating it at its design full power point. The optimum operating ...

### Solar panel wiring basics: How to wire solar panels

Key electrical terms for solar panel wiring. In order to understand the rules of solar panel wiring, it is necessary to understand a few key electrical terms -- particularly voltage, current, and ...





### Solar Panel Ratings Explained

Solar panel Current Ratings: Solar panels come with two Current (or Amperage) ratings that are measured in Amps: The Maximum Power Current, or  $I_{mp}$  for short.; And the Short Circuit Current, or  $I_{sc}$  for short.. The ...

### FUNDAMENTAL PROPERTIES OF SOLAR CELLS

Short circuit photocurrent The short-circuit current ( $I_{sc}$ ) is the current through the solar cell when the voltage across the solar cell is zero (i.e., when the solar cell is short ...



## Contact Us

For catalog requests, pricing, or partnerships, please visit:  
<https://www.vdbconstruction.co.za>