

Change attachments on ego power plus system





Overview

What are ego attachments?

EGO attachments are designed specifically for your EGO POWER+ Power Head (PH1400, PH1420) and offer the highest quality and performance. The EGO Power Head and Edger Attachment are part of the EGO Multi-Head System. The 8" edger creates clean and precise edges around your driveway, sidewalks and patio with ease.

What attachments can I add to my ego power+ multi-head system?

Add the EGO bristle brush attachment to your EGO POWER+ Power Head for convenient cleaning or clearing. The EGO cultivator attachment is a great addition to the EGO POWER+ Multi-Head System. The heavy-duty steel tines are adjustable from 8 to 9.5 inches. Extend your reach and get more from your EGO POWER+ Multi-Head System.

How much does the ego multi-head attachment cost?

Currently, the price for additional attachments ranges from \$120 to \$180 each. The big deal with the EGO Multi-Head attachment system is flexibility—but also power. Moving the motor to the back—near the battery—gives it a bit more efficiency. You're not sending all that battery power down a wiring harness to the head.

Which ego power head attachment is compatible with the ph1400?

Attachment is exclusively compatible with the EGO Multi-Head System Power Head (PH1400) Rugged construction keeps your tool safe under more conditions Create and maintain clean and precise edges around your driveway, sidewalks. and patio with the EGO POWER+ 8" Edger Attachment, part of the EGO POWER+ Multi-Head System.

Which eGo batteries are compatible with the ego power+ power head?

The EGO POWER+ Power Head is compatible with all EGO 56V ARC Lithium™



batteries (available separately) to deliver Power Beyond Belief™. The EGO Multi-Head System Power Head, String Trimmer Attachment, and Edger Attachment make a fantastic EGO starter kit.

What is the ego power head & Edger attachment?

The EGO Power Head and Edger Attachment are part of the EGO Multi-Head System. The 8" edger creates clean and precise edges around your driveway, sidewalks and patio with ease. The Power Head is compatible with all EGO Multi-Head attachments. The Power Head is the heart of your EGO POWER+ Multi-Head System.



Change attachments on ego power plus system



Multi-Tool

With a single power head unit and many different attachments, the EGO Power + multi-tool is ready for any job. Plus, simple, tool-free coupling makes switching attachments quick and easy. Additionally, EGO's telescopic pole has a tool-free interchangeable head system which can be set up to work with either the pruning saw or hedge trimmer attachment in just a few seconds.



EGO Pole Saw Attachment: What You Need to Know?

To attach an attachment to your EGO trimmer, simply insert the attachment into the power head and twist it until it clicks into place. Once

[Confused about Ego mulit-head : r/egopowerplus](https://www.reddit.com/r/egopowerplus/)

Ego has 2 powerheads, the ph1400 and the ph1420, they are both compatible with any of the multihead system attachments. The powerload attachment is a bit hard to find as a separate tool so if you can find the MST1603 macro323 mentioned then that might be the way to go along with an edger attachment.



How to swap the line trimmer head for the brush cutter

The reason an EGO garden multi-tool saves so much space in your tool shed is by removing the need for separate power tools for several tasks. As well the line trimmer (STA1500) and brush cutter (BCA1200) attachments highlighted in this article, your multi-tool will also work with the following attachments:



attached, you will be able to use the attachment's various functions depending ...



OPERATOR'S MANUAL 56-VOLT LITHIUM-ION POWER HEAD

POWER HEAD MODEL NUMBER PH1400/PH1400-FC WARNING: To reduce the risk of injury, the user must read and understand the Operator's Manual before using this product. Save these instructions for future reference. Español p. 51 Français p. 25

EA0800 EDGER ATTACHMENT

This attachment is also available as part of a set, which includes the multi-tool power head (PH1400E), line trimmer with rapid reload head (STA1500), brush cutter blade (ABB1203), hedge trimmer (HTA2000), pole saw (PSA1000), Edger (EA0800) along with a 5



[Power+ Multi-Head Attachments](#)

When will Ego Power offer the 16" Powerload String Trimmer with line IQ to selection of attachments Expand Post Give Praise EGO Upvote Answer Share 2 answers 173 views Oregon Mike (Customer) 2 years ago So the multi-head system is shaft driven. So



[POWER+ 56V Power Head Tool Only , EGO \(PH1420\)](#)

The EGO POWER+ Power Head is the core of your POWER+ Multi-Head System and works with the full assortment of Multi-Head System Attachments. POWER+ 56V Power Head Tool Only , EGO (PH1420) The store will not work correctly when cookies are disabled.



Telescopic Garden Tools & Extensions , EGO Power+

Easy to change attachment with thumb screw locking 03 / 08 Next PROFESSIONAL-X TELESCOPIC HEDGE TRIMMER ATTACHMENT Cut branches up to 26mm in diameter. 6-position articulation and additional twist rotation

The EGO 20cm Edger attachment is part of the EGO

The EGO 25cm Pole Saw Attachment, Pole Extension, Power Head, 2.5Ah ARC Lithium Battery and 56 Volt Charger is part of the EGO POWER+ Multi-Tool System. The 25cm pole saw provides efficient cutting and limbing, while the automatic lubrication ...



Multi-Head and Attachment Storage : r/egopowerplus

I've got the standalone string trimmer, and then a multi head tool with the edger and pole saw attachments. All fit nice. I got a few extra hooks and also hung my shovels, rakes, brooms, etc. ...



Amazon : EGO Power Plus Build Your Own Multi-Head Tool System ...

Kit includes the PH1400 Power Head plus the attachments, batteries, chargers and accessories that your pick Attachment Options: STA1500 15 inch String Trimmer, EA0800 Edger, HTA 2000 20 inch Hedge Trimmer, PSA1000 10 inch Pole Saw, CTA9500 9.5 inch Cultivator, BBA2100 Bristle Brush and RBA2100 Rubber Broom



EGO Power Plus Build Your Own Multi-Head Tool System Kit, ...

Overall, I like the EGO Power tools. However, their warranty sucks, and frankly so does their customer support. I had some large brushes that I needed to tackle. I used the pole saw attachment, but apparently, it hit a piece of metal. Both the multi-tool head and the

Power Parts

We offer the largest selection of EGO Power+ equipment, parts and accessories with free and fast shipping. Easily find the EGO parts you need with our easy to use part lookup and diagrams. Power + Parts is your best source for EGO lawn mowers, trimmers, edgers, leaf blowers, pressure washers, snow blowers and more.



How to swap the line trimmer head for the brush cutter ...

EGO News. How to swap the line trimmer head for the brush cutter on a cordless multi-tool. Battery powered multi-tools are perfect for gardening professionals or keen amateurs with larger plots - and switching attachments couldn't be simpler.



Power Head Attachment for Multi-Head System by ...

The EGO POWER+ Power Head is the core of your POWER+ Multi-Head System and works with the full assortment of Multi-Head System Attachments. Its high-efficiency brushless motor delivers long runtimes, low vibrations, and an ...

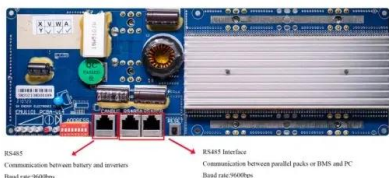


20" Hedge Trimmer Attachment for Multi-Head System by EGO

Tech Specs Compatible with EGO POWER+ Multi-Head System Power Heads (PH1400, PH1420), available separately 20-inch steel hedge trimmer blades with a 1-inch cut capacity 12-position articulation for cutting at any angle IPX4-rated weather-resistant

Attachment Compatibility

You can't modify the 1520 in that way. It's a standalone tool. You have to get the multi-head system which has a power head and then add whatever attachments you want to that. So power head plus pole saw attachment would be what you'd need to do.



Power head with other brand attachments : r/egopowerplus

Ego forums that fabricated an adapter to use his Ego power head (7 spline socket) to Stihl Kombi attachments (square drive). He made a 7 spline shaft using a brass bolt and (I think) a square socket from an old Ryobi/Craftsman power head.



Why this Hedge Trimmer is awesome

The EGO 25cm Pole Saw Attachment, Pole Extension, Power Head, 2.5Ah ARC Lithium Battery and 56 Volt Charger is part of the EGO POWER+ Multi-Tool System. The 25cm pole saw provides efficient cutting and limbing, while the automatic lubrication ...



Standard 20ft containers



Standard 40ft containers



12" Brush Cutter Attachment , EGO (BCA1220)

Use the EGO 12" Brush Cutter Attachment with EGO POWER+ Multi-Head System Power Head PH1420 for clearing thick, overgrown areas. The attachment's three-tooth steel blade delivers a 12-inch cutting width for clearing overgrown brush and thick, stalky vegetation or powering through saplings up to 3/4-inch thick.

8" Edger Attachment for Multi-Head System by EGO POWER+

Add the EGO 8" edger attachment for convenient & efficient edging. Designed specifically for your EGO POWER+ Power Head to deliver Power Beyond Belief



EGO's Multi-Head Attachment System Is A Lawn Life ...

EGO Power Head Multi-Tool Attachment System: Features and benefits As we mentioned earlier, the EGO Power Head attachment system is definitely a beast. But we had some attachments that frankly were much easier ...



EGO POWER+ Multi-Head System Snow Shovel ...

Compatible with EGO POWER+ Multi-Head System Power Heads (PH1400, PH1420), available separately Throws snow up to 25 feet with integrated directional control dial Clears a 4-car driveway with 6 inches of snow on a ...

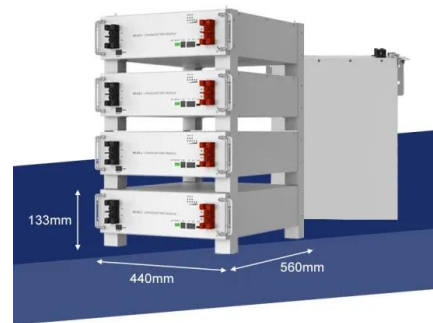


Multi-Tool

With a single power unit and many different attachments, the EGO Power + award winning multi-tool is ready for any job. Plus, simple, tool-free coupling makes switching attachments quick and easy. EGO Power+ system The EGO Power+ Multi Tool. One tool with

EGO Power+ PSA1020 Carbon Fiber Pole Saw Attachment

The 10" EGO Carbon Fiber Pole Saw Attachment is part of the EGO POWER+ Multi-Head System. This pole saw attachment is built tough for efficient cutting, limbing, and tree trimming. It features a lightweight and durable carbon fiber shaft protected by a lifetime warranty. The automatic lubrication system on this electri



Telescopic

Easy to change attachment with thumb screw locking 03 / 08 Next PROFESSIONAL-X TELESCOPIC HEDGE TRIMMER ATTACHMENT Cut branches up to 26mm in diameter. 6-position articulation and additional twist rotation 04 / 08 Next



Cordless Multi Tool , Battery Garden Multi Tool , EGO Power+

The power behind our cordless multi-tool The EGO multi-tool and attachments are powered by our high-performance battery. Our unique patented 56V ARC Lithium batteries provide you with the power you need to tackle any task.

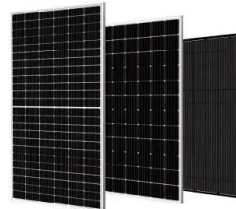


POWER+ Bristle Brush Attachment for Multi-Head ...

Add the EGO bristle brush attachment to your EGO Power+ Power Head for convenient cleaning or clearing. All EGO tools carry a 5-year limited warranty purchased from authorised EGO retailers. There is a 3-year limited warranty ...

POWER+ Carbon Fiber Extension Pole , EGO (EP7501)

EGO attachments are designed specifically for your EGO POWER+ Power Head (PH1400 and PH1420, available separately) and offer the highest quality and performance. Tech Specs Compatible with EGO POWER+ Multi-Head System Power Heads (PH1400, PH1420) and Pole Saw Attachments (PSA1000, PSA1020) only, available separately



Contact Us

For catalog requests, pricing, or partnerships, please visit:
<https://www.vdbconstruction.co.za>