

Closest planet outside of our solar system





Overview

There are 7,026 known exoplanets, or planets outside the Solar System that orbit a star, as of July 24, 2024; only a small fraction of these are located in the vicinity of the Solar System. Within 10 parsecs (32.6 light-years), there are 106 exoplanets listed as confirmed by the NASA Exoplanet Archive. Among the over 500.

Unlike for bodies within the , there is no clearly established method for officially recognizing an exoplanet. According to the .

• • • • .

• . Planetary.org. • . • . Exoplanet Exploration Program and .

Proxima Centauri b (or Proxima b), also referred to as Alpha Centauri Cb, is an orbiting within the of the star , which is the closest star to the and part of the larger triple . It is about 4.2 (1.3) from in the constellation , making it and , along with the currently disputed .

What is the closest habitable planet outside our Solar System?

From University of New South Wales Australia UNSW Australia astronomers have discovered the closest potentially habitable planet found outside our solar system so far, orbiting a star just 14 light-years away. The planet, more than four times the mass of the Earth, is one of three that the team detected around a red dwarf star called Wolf 1061.

Which star has the closest exoplanet?

The closest exoplanets are those found orbiting the star closest to the Solar System, which is Proxima Centauri 4.25 light-years away. The first confirmed exoplanet discovered in the Proxima Centauri system was Proxima Centauri b, in 2016. HD 219134 (21.6 ly) has six exoplanets, the highest number discovered for any star within this range.

Is Proxima Centauri b our closest exoplanet neighbor?

At only four light-years away, Proxima Centauri b is our closest known



exoplanet neighbor. Proxima b is a super Earth exoplanet that orbits a M-type star. Its mass is 1.27 Earths, it takes 11.2 days to complete one orbit of its star, and is 0.0485 AU from its star. Its discovery was announced in 2016.

Can astronomers see a planet outside our Solar System?

For the first time, astronomers have used NASA's James Webb Space Telescope to take a direct image of a planet outside our solar system. The exoplanet is a gas giant, meaning it has no rocky surface and could not be habitable.

How many exoplanets are there in the Proxima Centauri system?

The first confirmed exoplanet discovered in the Proxima Centauri system was Proxima Centauri b, in 2016. HD 219134 (21.6 ly) has six exoplanets, the highest number discovered for any star within this range. Most known nearby exoplanets orbit close to their stars.

Can astronomers find exoplanets?

Because planets in other solar systems are extraordinarily difficult to see directly, astronomers have had to come up with innovative ways to hunt for them. Only recently have our technology and techniques been up to the task of finding exoplanets. Telescopes on the ground and in space have uncovered thousands of planets beyond our solar system.



Closest planet outside of our solar system



What is the closest planet outside of our solar system?

It would be the exoplanet which is orbiting the star Proxima Centauri. In August, 2016, astronomers confirmed the discovery of an exoplanet orbiting within the habitable reaches of Proxima Centauri, the closest star to Earth and part of the small star system; Alpha Centauri- a triple star system just over 4 light years away. Its believed to have a mass of 1.3 of Earth- ...

50 closest star systems to earth and what we might ...

Since operations began on Oct. 1, 1958, NASA has been exploring our solar system and the stars beyond. The sun is just one out of more than 100 billion stars in our Milky Way galaxy--and these far-flung stellar bodies offer ...



NASA finds potentially habitable Earth-sized exoplanet

Exoplanets are planets outside of our solar system, NASA's website says. "We've found the nearest, transiting, temperate, Earth-size world located to date," Masayuki Kuzuhara, a project

Proxima b, the closest alien planet we know, may be even

The closest alien planet to our solar system is even more Earth-like than scientists had thought, new observations suggest. The research team



studied Proxima b using the Echelle Spectrograph for

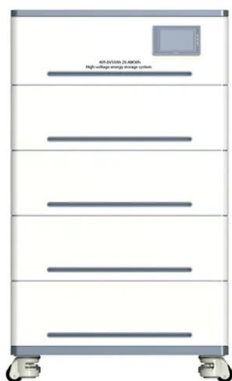


[What It Would Take to Reach the Stars](#)

A wild plan is taking shape to visit the nearest planet outside our Solar System. Here's how we could get to Proxima b [Skip to main content](#)
Scientific American February 1, 2017 10 min read

[List of potentially habitable exoplanets](#)

The following list includes some of the potentially habitable exoplanets discovered so far. It is mostly based on estimates of habitability by the Habitable Worlds Catalog (HWC), and data from the NASA Exoplanet Archive. The HWC is maintained by the Planetary Habitability Laboratory at the University of Puerto Rico at Arecibo. [1]



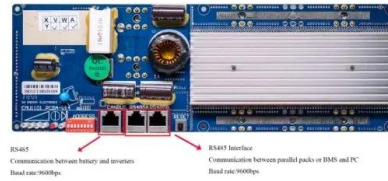
Exoplanets

Overview Most of the exoplanets discovered so far are in a relatively small region of our galaxy, the Milky Way. ("Small" meaning within thousands of light-years of our solar system; one light-year equals 5.88 trillion miles, or 9.46 trillion kilometers.) Even the closest known exoplanet to Earth, Proxima Centauri b, is still about 4 light-years [...]



Calculator shows travel time to planet outside solar system , CTV ...

How long would it take to travel to the nearest planet to us that could support human life --and, more importantly, Exoplanets, which are planets that lie outside of our own solar system



RS485 Communication between battery and inverter Read rate:3000bps
RS485 Interface Communication between parallel packs or EMS and PC Read rate:10000bps

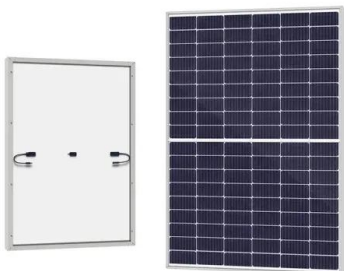


NASA's Webb Takes Closest Look Yet at Mysterious Planet

NASA's James Webb Space Telescope has observed a distant planet outside our solar system - and unlike anything in it - to reveal what is likely a highly reflective world with a steamy atmosphere. It's the closest look yet at the mysterious world, a "mini-Neptune

NASA Discovers First Earth-Size Planets Beyond Our ...

PASADENA, Calif. -- NASA's Kepler mission has discovered the first Earth-size planets orbiting a sun-like star outside our solar system. The planets, called Kepler-20e and Kepler-20f, are too close to their star to be in ...



What it would take to reach the stars , Nature

Nature - A wild plan is taking shape to visit the nearest planet outside our Solar System. Here's how we could get to Proxima b. Skip to main content Thank you for visiting nature .



List of nearest terrestrial exoplanet candidates

This list of nearest terrestrial exoplanet candidates contains possible terrestrial ("rocky") exoplanets spaced at a distance of up to 50 light-years from the Solar System, ordered by increasing distance.[1] [2] [3]They may be composed primarily of silicate rocks and/or metals..



This is the closest planet yet that could support life ...

If future generations did make it to Wolf 1061c, they'd find an oversize rocky planet circling a star that's dimmer and smaller than our sun. The UNSW team says it hopes to study the atmosphere of



Astronomers Reveal Presence of a Planet Orbiting Our Solar System...

Using the European Southern Observatory's Very Large Telescope (ESO's VLT), astronomers have detected a planet orbiting our solar system's closest single star. Previous studies have found as many as five planets orbiting Earth's closest stellar neighbors, a three-star system just over four light years away composed of Alpha Centauri A, Alpha Centauri B, and ...



The nearest potentially habitable planet to Earth - Exoplanet

UNSW Australia astronomers have discovered the closest potentially habitable planet found outside our solar system so far, orbiting a star just 14 light-years away. The ...





Exoplanet

An exoplanet or extrasolar planet is a planet outside the Solar System. The first possible evidence of an exoplanet was noted in 1917 but was not then recognized as such. The first confirmation of the detection occurred in 1992. A different planet, first detected



NASA discovers first possible planet outside our galaxy , CNN

Scientists may have detected signs of a planet transiting a star outside of the Milky Way, in what could be the first planet ever to be discovered outside our galaxy. The possible exoplanet was

This is the closest solar system to Earth containing multiple planets

Both of the exoplanets, or planets found outside of our solar system, are full of extremes. Planet b, which is the closest to its host star, completes on quick orbit of the star every 11 Earth days.



Planet Sizes and Locations in Our Solar System

Mercury is the smallest planet in our solar system. Mercury is a little more than one-third the width of Earth, and has an equatorial diameter of about 3,032 miles (4,880 kilometers). Mercury is the closest planet to the Sun, orbiting at an average distance of 36



The Nearest Planet Outside The Solar System May ...

The Nearest Planet Outside The Solar System May Not Be What We Think If new research is right, Proxima Centauri b is just one of many nearby worlds that could be habitable, but not in the way

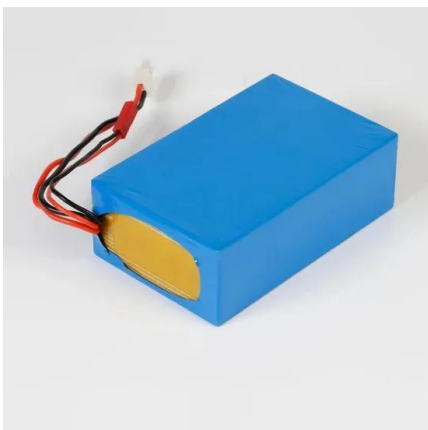
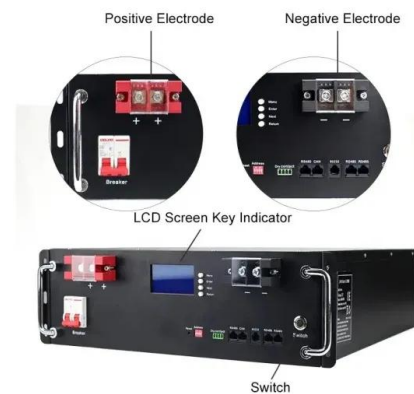


The Closest Solar System to Earth is Even Weirder Than

Since 2016, astronomers have known that the solar system next door to ours--a triple-sun system--has one planet, Proxima b, located in the so-called habitable zone. Now a group of researchers

Proxima b 3D Model

At only four light-years away, Proxima Centauri b is our closest known exoplanet neighbor. Proxima b is a super Earth exoplanet that orbits a M-type star. Its mass is 1.27 Earths, it takes 11.2 days to complete one orbit of its ...



Expert discusses the recent discovery of an Earth-sized planet outside

Working with data from NASA's Transiting Exoplanet Survey Satellite, or TESS, Michigan State University has helped discover an Earth-sized exoplanet--a planet outside of our solar system. This



In Depth: Exoplanets

NASA's Spitzer Space Telescope (2013-2020) was not designed to search for exoplanets, but its infrared instruments made it an excellent exoplanet explorer. It was used in the notable discovery of the TRAPPIST-1 system. In 2018 the Transiting Exoplanet Survey Satellite (TESS) was launched as a successor to Kepler to discover exoplanets in orbit around the brightest dwarf ...



NASA's Webb Takes Its First-Ever Direct Image of Distant World

For the first time, astronomers have used NASA's James Webb Space Telescope to take a direct image of a planet outside our solar system. The exoplanet is a gas giant, ...

Closest Potentially Habitable Planet Ever

This newly discovered planet is by far the closest potentially habitable planet ever detected outside our solar system, and one that could be reached by small, unmanned space probes before the end



This glowing speck is a freezing exoplanet six times ...

One of the closest planets outside our Solar System is the most frigid ever to be directly imaged. By. Davide Castelvecchi. Images of the exoplanet taken by the James Webb Space



The Nearest Earth-Like Planet Outside Our Solar System Could ...

At a distance of 4.2 light years, Proxima b is the closest potentially habitable Earth-like planet outside our solar system. This past August, scientists with the European Southern Observatory



The Big Questions

General questions What is an exoplanet? An exoplanet is a planet outside our solar system, usually orbiting another star. They are also sometimes called "extrasolar planets," "extra-" implying that they are outside of our solar system. detailed answer Is there life on other planets? Earth is the only planet we know of with life on [...]

Proxima Centauri b

OverviewDiscoveryPhysical propertiesHost starSurface conditionsLifeObservation and explorationView from Proxima Centauri b

Proxima Centauri b (or Proxima b), also referred to as Alpha Centauri Cb, is an exoplanet orbiting within the habitable zone of the red dwarf star Proxima Centauri, which is the closest star to the Sun and part of the larger triple star system Alpha Centauri. It is about 4.2 light-years (1.3 parsecs) from Earth in the constellation Centaurus, making it and Proxima d, along with the currently disputed Proxima c, ...



Contact Us

For catalog requests, pricing, or partnerships, please visit:



<https://www.vdbconstruction.co.za>