

Coal and ash handling system in thermal power plant





Overview

Ash handling plant or ash handling system in thermal power plant are used to cooled down the ash to manageable temperature, transferred to a disposal area or storage which is further utilized in other industries.

Ash handling system are generally divided into three types fly ash handling system, bottom ash handling system and ash slurry disposal system. Fly ash is captured and removed from the flue gases by economiser, air-preheater and electrostatic precipitator.

What is an ash handling system in a thermal power plant?

This document describes an ash handling system in a thermal power plant. It discusses the different components of the system including the bottom ash handling system, coarse ash handling system, fly ash handling system and ash slurry disposal system. Ash is generated during coal combustion and constitutes 30-40% of the total coal consumption.

What is a coal ash handling system (CAHS)?

The current paper reveals the performability and maintenance decisions for the Coal Ash Handling System (CAHS) of a subcritical Thermal Power Plant (TPP). This system comprises of five subsystems i.e. Furnace, Electro Static Precipitator (ESP), Vessel, Compressor Transportation Line (CTL) and Ash Silo.

Do thermal power plants need ash handling?

Proper ash handling is required as thermal power plants produce a large amount of ash as a byproduct of coal combustion. This document discusses coal handling and combustion in thermal power plants. It begins by describing the different types of coal and methods of coal analysis.

What percentage of ash is generated in thermal power plant?

Fly Ash – Around 80 % of ash generated in thermal power plant is fly ash. It is in form of very fine particles which is collected via economiser hopper, air-preheater hopper and electrostatic precipitator (ESP). What is ash handling plant or ash handling system?



What is coal handling system in thermal power plant?

2. Operation and Maintenance of Coal Handling System Coal handling system in thermal power plant, usually means the technique procedure that coal from loading and unloading outside the factory to boiler Coal Storage.

What is ash handling system?

Ash is generated during coal combustion and constitutes 30-40% of the total coal consumption. The ash handling system ensures the ash is properly managed, utilized or disposed of. Ash handling systems in power plants have three main types: hydraulic, pneumatic, and mechanical.



Coal and ash handling system in thermal power plant



Operation and Maintenance of Coal Handling System in Thermal ...

Compared with actual situation of the current thermal power plant, this paper studies operation process of coal handling system in thermal power plant. Analyze technical ...

Fuel Handling System and Ash Handling System

Out-plant handling. In-plant handling. 1. Out-plant handling: This handling includes the handling of coal from coal mine to the thermal power plant. These handlings are done outside the plant in the following ways. (a) Transportation by sea or river: If the power plant is



Ash Handling System of a Thermal Power Plant , PPT ...

This document describes an ash handling system in a thermal power plant. It discusses the different components of the system including the bottom ash handling system, coarse ash handling system, fly ash handling ...

Thermal Power Plant: Diagram, Layout, Working & Construction

The ash handling and storage plant is the other section, where the coal burning process's produced ash is sent for ash storage. Coal-type thermal power plant requires a larger duration before it supplies the generated power to the



grid. This type of power It is



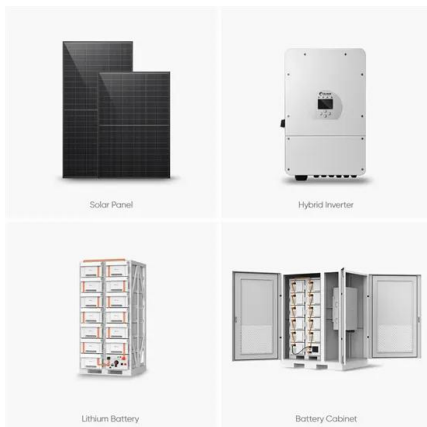
Water Resource Management for Coal-Based Thermal Power Plant

In a coal-based thermal power plant, coal is used as working fuel in the boiler for generating steam from water. The required amount of coal needs to be met from nearby coal ...



Wet vs dry bottom ash handling compared: one plant's experience

Dry systems have significant advantages for bottom ash handling at coal fired power plants, show that the losses at the bottom of the boiler are 1516 kWt for a single wet system against 200 kWt for a single MAC system, meaning a net thermal power saving



[Ash Handling System , Thermal Power Plant](#)

What is Ash? Ash is the residue remaining after the coal is incinerated. Composition of ash handling system? SiO_2 , Al_2O_3 , Fe_2O_3 , CaO , MgO . Why Ash Handling System is required? In Thermal Power Plant's coal is generally used as fuel and hence the ash



Thermal Power Plants: Components & Working Principle

Modern boilers furnish steam at a temperature of 550 o C and pressure of 16.5 MPa. The overall efficiency (Electrical output/thermal input) is then about 40 %. Using previous model, we can estimate the characteristics of ...



Thermal power Plant ,Steam Power Plant

In thermal power plant, the heat energy obtained from the combustion of fuel is used to convert water into steam. The high temperature and pressure steam are used to rotate the turbine blade, turbine shaft is connected to generator. The ...

Instrumentation and control in coal-fired power plant

Instrumentation and control in coal-fired power plant 3 Contents 1 Introduction 5 2 Tasks of instrumentation and control (I& C) system 6 2.1 Coal handling 7 2.1.1 Mills (Pulverisers) 7 2.2 Boilers 8 2.3 Fans 9 2.4 Pumps 11 2.5 Heaters 11 2.6 Water technology 11 3



Performability and maintenance decisions for coal ash handling system

There is a large demand for non-renewable energy, and the annual consumption is more than half [1][2]. The thermal power system of the thermal power plant is connected by steam and water pipes in



GUIDELINES ON DESIGN, CONSTRUCTION, O& M AND ...

CONTENTS Chapter No. DESCRIPTION PAGE No. 1
 Introduction 9-12 SECTION-A (Siting, Design and
 Engineering Standard 2 Disposal of Fly ash 13-21
 3 Planning for Ash Pond 22-29 4 Design
 Procedure for Ash Pond 30-35 5 Construction
 material 36-57 6 Construction and Seepage
 Control 58-73



WHAT ARE DIFFERENT TYPES OF ASH HANDLING SYSTEM?

In thermal power plants, an ash handling system is used to collect and Pneumatic systems may be positive or negative pressure Hydraulic. Green Coal Project We are introducing Green Coal from Municipal Solid Waste by Macawber Beekay. An eco-friendly and

Thermal Power Plant

In most of the thermal power plants, coal is used as fuel. During the combustion of coal, So, there is two ash handling systems; one is the bottom ash handling system and the second is the fly ash handling system. Near to the load center: The electrical And



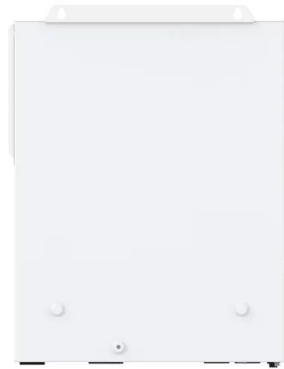
Operation and Maintenance of Coal Handling System in Thermal ...

Failure analysis of belt in conveyor system for coal handling in thermal power plant. The study is made and compared with actual situation of the thermal power plant, for the failure in belt of ...



Thermal Power Plant: Definition, Layout, Working, Site Selection

Thermal Power Plant Layout: The construction of Thermal Power Plants is Coal Storage, Coal Handling, Boiler, Boiler feed Pump, Superheater, Economiser, Air Preheater, Ash handling and Storage, Feed Water, Turbine, Generator, and 3 Phase Supply



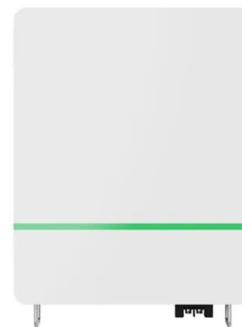
[Compressed Air in Thermal Power Plants](#)

Compressed air at a power plant finds application in coal handling, operating pneumatic instruments connected with boilers, turbines, generators, precipitators, and ash handling system. India is the world's third-largest producer and consumer of electricity. And while renewable energy will take over a larger share of power generation in India, thermal power will ...



[Ash Handling Power Plant System . PPT](#)

Requirement of Ash Handling System : o In Thermal Power Plant's coal is generally used as fuel and hence the ash is produced as the byproduct of Combustion. o Ash generated in power plant is about 30- 40% of total coal consumption and hence the system is required to handle Ash for its proper utilization or disposal.



[CEA Guidelines for Ash Handling Plants](#)

Selected information on ash handling plants from standard design criteria / guidelines for balance of plant of 2 x (500 MW or above) thermal power project published by Central Electricity Authority, New Delhi, India - 110066, in September 2010 is given in this article.



Research Status of Dust Reduction Technology in Coal Handling ...

The technical route of dust reduction in coal handling system of thermal power plant was advised, which provides reference for dust control in coal handling system.



Handling and Utilisation of Fly Ash from Thermal Power Plants

Other wastewater streams from the power plant can be from ash handling, boiler feed water, flue gas desulphurisation, and from other applications in coal-fired power plants. C. Ash Handling and Disposal : Dumping of fly ash in landfills can lead to various environmental problems like soil pollution, land pollution, groundwater pollution, and air pollution in the ...

Water Resource Management for Coal-Based Thermal Power Plant

Water requirement in power generation is regulated by a number of factors like raw water quality, condenser cooling system, coal quality, utilization of ash, disposal of ash, wastewater handling etc. Based on water quality and end-user concerns, the water utility in



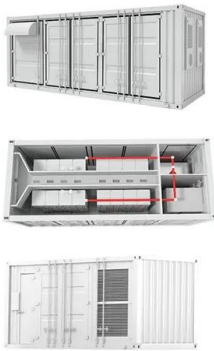
Coal Handling System , Coal Handling System In Thermal Power Plants...

TEAM ON (CHP) COAL HANDLING PLANT Our human expertise spearheads & marks our presence as a respected player in the (CHP) Coal Handling Plant sector. The team possesses more than 20 years of rich experience in Coal Handling turnkey projects that



Coal Ash Management: Understanding Your Options

Since the issue of the proposed Environmental Protection Agency (EPA) Coal Combustion Residual (CCR) rules in May 2010 and the Steam Electric Power Effluent Limitations Guidelines (ELG) in April



[Welcome to Tecpro Systems Limited](#)

Tecpro Systems Limited is an established EPC company in India, engaged in providing turnkey solutions in:: Bulk Material Handling Systems for cement, power, steel sectors etc, :: Ash Handling Systems for thermal power plants, :: Balance of Thermal Power

Coal handling plant in a thermal power generating station

Equipment used in a coal handling plant 1. Pull chord switch A series of such switches are arranged in series at a 1m distance on the side of conveyor belt. The power supply to rotor of the conveyor belt is established only if all switches in series are connected. 2.



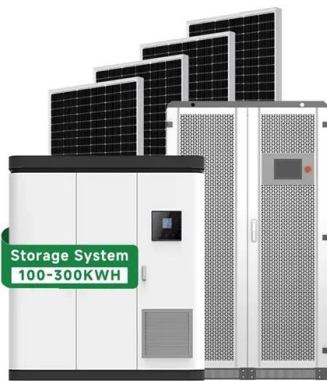
Operation and Maintenance of Coal Handling System in Thermal Power Plant

The interlock and protection of belt conveyor At coal handling system in thermal power plant have interlock the equipment which can avoid equipment bad sequence start-up interlock, every equipment work according to sequence rule start-up. so 2035Lihua 2032



What is Thermal Power Plant? Basic, Definition, Parts, Working

Each thermal power plant has its own coal handling and ash handling plant. Coal is collected from the wagon tippler and fed it to the crusher house through a conveyor belt. Crusher house is having a vibrating screen.



Coal Handling in Thermal Power Plant

Coal requirements per day of a large thermal plant are very large. A 600 MW power plant handles about 7200 tons of coal per day. Therefore, one of the major requirements of a power plant is to reduce the cost of handling of coal from the point of its origin up to the

Stochastic analysis and maintenance planning of the ash ...

This paper discusses stochastic analysis of the ash handling system in a thermal power plant. The system consists of four subsystems Ai, Bj, C and Dk in series, with three ...



ASH HANDLING PLANT , PPT

The document summarizes ash handling systems used in thermal power plants. It describes the two main types of ash - bottom ash and fly ash. 2. What is ash ? Ash, also known as ember or clinker, is defined as the powdery residue left after something has been burned off. Generally, it denotes the mineral content that is mostly left after combustion.



Operation and Maintenance of Coal Handling System in Thermal Power Plant

Automation technologies can play a vital role in thermal power plants equipment maintenance, where coal bunker liner are critical parts in terms of functioning and safety. In this



Different types of Ash Handling Systems

Any thermal power plant must choose an ash handling system depending on its requirements. At the same time, ensure that the System runs efficiently, the equipment is thoroughly maintained, and costs are taken care of.

STANDARD DESIGN CRITERIA/ GUIDELINES FOR BALANCE OF PLANT ...

system plant- 2 x 500MW coal based thermal power plant (submerged scrapper chain conveyor system) CEA-TETD-AHP-003 Typical flow diagrams for bottom ash handling, ash disposal & water system plant- 2 x 500MW coal based thermal power plant (jet



Contact Us

For catalog requests, pricing, or partnerships, please visit:
<https://www.vdbconstruction.co.za>