

Commercial size solar panels





Overview

Commercial solar panels typically feature 70 or more cells, whereas residential panels usually have 60 cells. This larger size allows commercial panels to capture more sunlight and generate higher power output, ranging from 350 to 600 watts per panel. In contrast, residential panels generally produce between 250 to 400 watts. How big are commercial solar panels?

Commercial solar panels typically include 72 solar cells and measure up to 6 feet wide (78 inches long by 39 inches wide). As with residential solar panels, commercial models are between 1.5 to 2 inches deep. Most 72-cell commercial solar panels produce between 350 and 400 watts of power.

What are commercial solar panels?

Like residential solar options, commercial solar panels harness the power of sunlight, converting this renewable energy source into electricity to power various facilities. Commercial solar is utilized by a diverse range of businesses and institutions, including:.

How many watts can a commercial solar panel produce?

The output capacity of a solar panel depends not only on its size but on the amount and intensity of sunlight it receives. On average, a typical commercial solar panel can output around 325 to 350 watts. However, this can increase to 400-450 watts for high-efficiency commercial panels.

How many solar panels does a commercial solar panel have?

The average solar panel for a home will have 60 or 72 cells, while a commercial solar panel will have 96 cells or more. Compare Quotes From Top-rated Solar Panel Installers Solar power is still an emerging energy source. Some commercial contractors do offer their services in all 50 states, while some focus on particular regions of the country.

How big is a residential solar panel?



A single residential solar panel typically has 60 PV solar cells and measures 5.4 feet by 3.25 feet (65 inches long by 39 inches wide). The panels are between 1.5 to 2 inches deep. Most 60-cell residential solar panels produce around 300 watts of power each.

How much do commercial solar panels cost?

The cost of commercial solar panels can vary depending on several factors, but on average, businesses can expect to invest between \$2 to \$3 per watt for solar panel installation. For a regular business setup needing 100 kW to 500 kW of solar power, an average total cost typically ranges from \$200,000 to \$1,500,000. Factors Influencing the Cost



Commercial size solar panels



How Big Are Solar Panels: How Panel Size Impacts Your Solar ...

Commercial and industrial solar panels are often larger than residential panels. The average solar panel size in a commercial application is approximately 78 inches by 39 inches with 96 cells. These 96-cell panels have an average panel output of 500 watts, making them more suitable for large-scale energy needs.

Solar Panel Size Guide: Find the Right Fit for Your Needs

2 ???· Explore solar panel sizes for residential, commercial, and utility projects. Get insights on dimensions, weight, and tips to estimate your project's footprint. Search (216)800-9300 Have Questions? We have answers! (216)800-9300 Got Question 1925 St Clair Ave



Commercial Solar Panels: Installation Costs & Benefits Explained

Commercial solar panels can be added to almost any commercial or industrial property, allowing businesses, nonprofits, municipalities, and other entities to produce their ...



The Complete Guide to Commercial Solar Battery ...

This complete guide to commercial solar battery storage can help you pick the best option for your business. Skip to content Solar Earth Inc. SAVE 90%. GET A FREE ESTIMATE (805)



691-8000 SAVE 90%. GET A FREE ESTIMATE
Menu ...



Commercial Solar Panel Installation: The Ultimate Guide for Your

Commercial solar panels differ from their residential counterparts in size, power output, and cost. Where residential solar arrays often range from 5 to 10 kilowatts, commercial installations can reach up to several megawatts.

Solar Panel Sizes and Wattage: A Comprehensive Guide to ...

Defining Solar Panel Size: Dimensions Explained
A solar panel's size refers to the area it covers. The standard sizes for residential solar panels tend to be around 65 inches by 39 inches, while commercial variants may go up to 78 inches by 39 inches or higher.



LPW48V100H
48.0V or 51.2V

Solar Panels for Commercial Buildings (Future Proof)

Commercial solar panels are typically sized between 250 and 350 watts. For a 250 watt panel, the average commercial building can produce 575-kWh of electricity each month. A 350-watt panel can make 825-kWh of electricity monthly. These numbers will



Best Commercial Solar Panels: Ultimate Guide for Your Business ...

What Are Commercial Solar Panels Let's begin by demystifying what commercial solar panels entail. Just as the name suggests, these are solar panels designed for commercial, rather than residential use. Notably, their design focuses on a higher power yield to



Solar Panel Sizes, Dimensions & Weight , Solar Choice

There isn't one single answer to the question "How big are solar panels?" but the size of the solar panels you install for residential or commercial solar systems matters. For one thing, solar panel sizes or dimensions, ...

Solar Panel Sizes & Dimensions UK (2024)

The most common solar panel sizes for residential installations are between 250W and 400W, while larger commercial installations may use panels up to 500W or more. The size of a solar panel affects its efficiency, with larger panels generally being more efficient but also more expensive and heavier.



Commercial Solar Panels: Benefits & Installation Cost ...

What is the size of commercial solar panels? Commercial solar panels are typically larger and more powerful than their residential counterparts. These panels can range from 72 to 96 cells per panel, with wattages ...





Commercial Solar Inverters

These commercial grade solar inverters are for large scale commercial applications. Ranging in size from 30,000 watts to 500kW, these central inverters convert DC solar power to usable AC power efficiently and with little maintenance. The top brands 888-498



Ultimate Guide to Solar Panel Size and Weight

Source: Mission Solar Energy Usually, residential rooftop solar panels are approximately 65 inches tall, 40 inches wide, and 2 inches thick. In feet, that would be 5.4 ft. by 3.3 ft. Commercial solar modules are usually slightly larger in length and width only. However

Solar Panel Size and Weight: How Big Are Solar Panels?

Note: These sizes are for average-sized solar panels, but there are also smaller and larger solar panels available on the market. How Much Do Commercial Solar Panels Weigh? Commercial solar panels are usually heavier than residential ones, typically weighing around 50 pounds (22.7 kg) or more.



What Are The Best Commercial Solar Panels?

Top 5 Best Commercial Solar Panels It's important to note that what's considered the "best" commercial solar panels can vary based on your specific needs, such as available space, budget, and efficiency requirements. There are, however, certain manufacturers



Commercial Solar Panel Sizes: An In-Depth Guide to ...

On average, a typical commercial solar panel can output around 325 to 350 watts. However, this can increase to 400-450 watts for high-efficiency commercial panels. For in-depth information on that, you can check out our ...

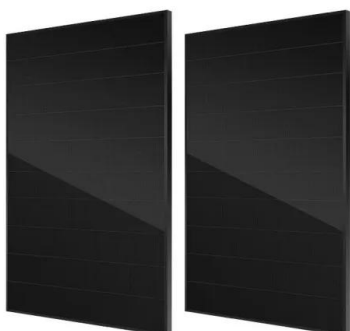


How Big Is A Solar Panel? Dimensions And Sizes

Solar panels come in various shapes and sizes, offering an array of dimensions tailored to meet diverse energy needs. These photovoltaic marvels, harnessing sunlight to generate power, present an intricate blend of ...

How Big Are Commercial Solar Panels?

Most commercial panels contain 60-96 photovoltaic cells, though there are some larger ones typically reserved for utility-scale applications. The size of solar panel you need will be based on your installation space and energy needs. When ...



A Complete Guide To Commercial Solar Panels

Commercial Solar Panel Size and Efficiency. Steps for Successful Commercial Solar Panel Installation. Commercial Solar Panel Cleaning and Maintenance. Conclusion. The commercial solar panel industry has experienced inconsistent ...



[Solar Panel Sizes and Wattage Explained](#)

Best Solar Panel Sizes and Wattage Calculator
This curated list includes top-brand calculators for determining panel size, output and battery capacity for your system along with wattage estimates for monthly and yearly ...



Solar Panel Size Guide

When it comes to solar panel size, learn about the basics (including average sizes) and what to consider for your own home or business. When you're ready to switch to a commercial solar installation or home solar installation with solar panels, size matters. You'll save money with solar power regardless, but you want to ensure you save the most money possible!

Solar Panels Size & Weight (Including Commercial Dimensions)

Commercial solar panels typically include 72 solar cells and measure up to 6 feet wide (78 inches long by 39 inches wide). As with residential solar panels, commercial models are between 1.5 to 2 inches deep. Most 72-cell commercial solar panels produce between 350 ...



Commercial Solar Panel Installations (Costs, Benefits & More)

Depending on the size of the system, commercial solar panel installations can take anywhere from weeks to months to complete. The best way to learn how long an installation would take for your business is to connect with a local solar installer near you.



Commercial Solar Power: A Complete Guide

Commercial solar panels, also commonly known as 'Commercial & Industrial-scale solar (C&I)', like residential solar panels, are photovoltaic panels that absorb sunlight for power generation. These are mostly grid-tied solar systems, that are in turn used to power office buildings, schools, warehouses, factories, and more.



Solar Panels For Commercial Use - A Complete Guide

The solar panel modules consist of a number of solar panels that are assembled so that the module achieves the desired voltage and current strength. A typical module covers from about 1.87 m2 to approx. 2.60 m2 and ...



Commercial Solar Panels

Commercial solar panels are typically around 1.8m by 1.1m in size, commonly containing 60 cells (the small squares you can see if you look closely at a solar panel). In some situations, such as utility scale installations, it makes sense to use slightly larger 72 ...

Applications



Commercial Solar Systems . Solar System Cost

Commercial solar systems by Solar Electric Supply (SES) are custom solar panel grid-tie power systems for commercial buildings using REC, SolarWorld, Hanwha, Trina and Canadian Solar solar panels. Grid-tie inverters include: SMA, Fronius, SolarEdge, PV ...



Solar Panel Sizes & Wattage

Historically, solar cell dimensions were typically 156mm x 156mm. However, in the last 3-4 years, there has been a trend towards larger-sized solar panels. Commercial Solar Panels: Commercial solar panels are equipped with 72 solar cells, which are larger to



A Comprehensive Solar Panel Size Chart: Find the Right Fit

Commercial vs. Residential Solar Panel Sizes
When we look at commercial versus residential solar solutions, solar panel size comparison stands out. Homes usually use 60 to 65 cells solar panels. They come in different colors. This makes them flexible for any

The Ultimate Guide to Commercial Grade Solar ...

Commercial grade PV solar panels are designed to meet the high-capacity energy needs of businesses and industrial facilities. They are built to generate electricity on a larger scale compared to their residential counterparts. While ...



- 100KWH/215KWH
- LIQUID/AIR COOLING
- IP54/IP55
- BATTERY 6000 CYCLES

How Big is a Solar Panel? The Solar Panel Size Guide

How Big Is a Commercial Solar Panel? The average size of a commercial solar panel, such as those you would see on top of a hospital or in a field, is about 6.5 feet (2 meters) by 3.35 feet (1 meter), or 78 inches by 39 inches. They contain a system of at least



Commercial solar panels explained - getting started with

Commercial solar panel systems can lop 60 - 70% off the cost of energy, saving the average small to medium sized business up to £5,400 every year. Results like this indicate solar is a solid option, but some businesses still have questions: Is solar power



Standard Sizes of Solar Panels: Choosing the Right One for Your ...

Explore the standard sizes of solar panels to find the perfect fit for your energy needs. Learn more about the size of one solar panel and options available. Does size matter when using the sun's energy? In the solar energy world, especially on your rooftop, the size of one solar panel can greatly impact your investment. . Nowadays, with the push for cleaner energy ...

Contact Us

For catalog requests, pricing, or partnerships, please visit:
<https://www.vdbconstruction.co.za>