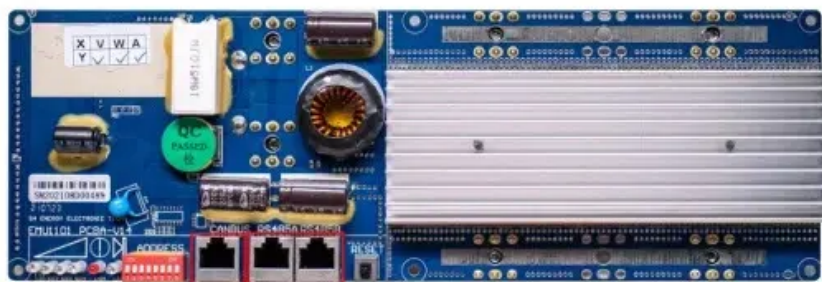


Components of power steering system



RS485
Communication between battery and inverters
Baud rate:9600bps

RS485 Interface
Communication between parallel packs or BMS and PC
Baud rate:9600bps



Overview

The power steering unit is located at the lower end of the steering column in place of the usual conventional steering gear. It is connected by two oil lines to the hydraulic pump mounted on the engine.

There are generally five types of power steering systems: 1. Integral power steering 2. Linkage power steering 3. Hydraulic Power Steering 4. Electric Power Steering 5. Rack and Pinion Power Steering.

What is the difference between the manual steering and power steering system: Power steering is a system that helps in steering the wheels utilizing the source of power. Whereas Manual steering is a system that requires the driver's effort to steer the wheels.

Following are the advantages of power steering: 1. It prevents the wheel from transferring the loading to the steering column. 2. Power steering reduces driver fatigue. 3. It lowers the effort required for steering.

Power steering is a system that reduces the driver's effort required for steering to turn the steering wheel. With the help of power steering, it is easier for the vehicle to turn or maneuver.

The power steering unit is located at the lower end of the steering column in place of the usual conventional steering gear. It is connected by two oil lines to the hydraulic pump mounted on the engine.

There are generally five types of power steering systems: 1. Integral power steering 2. Linkage power steering 3. Hydraulic Power Steering 4. Electric Power Steering 5. Rack and Pinion Power Steering.

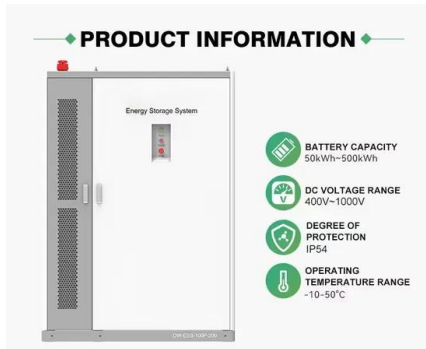
Following are the advantages of power steering: 1. It prevents the wheel from transferring the loading to the steering column. 2. Power steering reduces driver fatigue. 3. It lowers the effort required for steering.

What is the difference between the manual steering and power steering system: Power steering is a system that helps in steering the wheels. Manual steering is a system that requires the driver's effort to steer the wheels.

Electric power steering (EPS) or motor-driven power steering (MDPS) uses an electric motor instead of a hydraulic system to assist the driver. Sensors detect the position and torque exerted inside the steering column, and a computer module applies assistive torque via the motor, which connects either to the steering gear or steering column. This allows varied amounts of assistance.



Components of power steering system



Power steering

Overview Electric systems History Hydraulic systems Electro-hydraulic systems See also

Electric power steering (EPS) or motor-driven power steering (MDPS) uses an electric motor instead of a hydraulic system to assist the driver of the vehicle. Sensors detect the position and torque exerted inside the steering column, and a computer module applies assistive torque via the motor, which connects either to the steering gear or steering column. This allows varied amounts of assista...

9 Common Parts in the Car Hydraulic Power Steering System and ...

Hydraulic Power Steering System Components If you're driving a vehicle that was made within the last 20 years, the chances are that it has a hydraulic power steering system in it. Below is a list of the components of a car hydraulic power steering system.



[Power Steering Systems and Components](#)

system. Control and steering assistance are powered by an electric current. Automotive and Light-duty compared with a hydraulic steering system in a two-liter gasoline engine passenger car, with an average fuel consumption of 30 MPG in urban traffic only.



Understanding the Components of a Car Steering System



These components are part of power steering systems, which assist the driver in turning the wheels and make steering easier. In addition to illustrating the physical components, a car steering diagram may also include arrows or lines to indicate the direction of



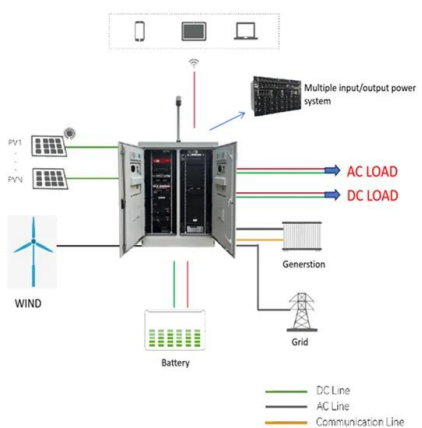
What is Electric Power Steering (EPS)? Working, Parts & Diagram

The motor employed for Electric Power Steering (EPS) system gear assembly is a permanent magnetic field DC motor. Figure 2: Electric Power Steering. The main components of the electric power steering system (see Figure 2) are as follows, Motor Motor



Power steering

Power steering is a system for reducing a driver's effort to turn a steering wheel of a motor vehicle, by using a power source to assist steering. [1]Hydraulic or electric actuators add controlled energy to the steering mechanism, so the driver can provide less effort to turn the steered wheels when driving at typical speeds, and considerably reduce the physical effort necessary to turn the



Hydraulic Power Steering Systems Explained - eEuroparts

Before we dive into troubleshooting hydraulic power steering systems, it's important to have a basic understanding of the components that make up an average power steering system. A typical power steering system is made up of several key components that work together to assist with steering control.



13 Essential Steering System Components

It's all thanks to the intricate network of steering system components working together seamlessly. From the steering wheel in your hands to the wheels that grip the road, each component plays a vital role in enhancing control and manoeuvrability. Let's dive into



How Does Power Steering Work? (With Example ...

We'll deliver your power steering system parts in as few as two working days. Don't risk driving with a faulty power steering system. Order the parts you need for repairs, such as a new steering gear and other power ...

Power Steering Guide: Everything You Need to Know

Quick Facts About Power Steering A power steering system reduces how much effort a driver needs to turn a car's steering wheel. A whining sound under the hood might signal that the car is low on



Steering System: Types, Parts, Function, Diagram & Steering Gears

This is the modern steering layout of almost all automobiles. In this type of steering system, each front wheel is turned individually about the side pivot. The front axle is pivoted on either side of the axles. And as the stub axles, the wheels are mounted. The stub





Understanding How Power Steering Works: With ...

To understand the intricate components of power steering systems, examining detailed diagrams can provide valuable insight into how hydraulic and mechanical elements work together efficiently. Power steering ...



How Automotive Steering System Works: Components and Types

6 ???· Power steering systems assist hydraulic or electric mechanisms, reducing the driver's effort. The two main types are hydraulic power steering (HPS) and electric power steering ...



The Power Steering System & Steering Gear

There are several components in your vehicle's power steering system that make it easier to turn and steer the vehicle accurately. Cars of old had huge steering wheels and required a lot of muscle to manage the manual steering system. Thanks to technology



Power Steering System: Working, Types, Applications,

What are the components of steering system? What happens when a pitman arm fails? Your vehicle consists of different parts. "Turning" is a fundamental function of a vehicle that is ...



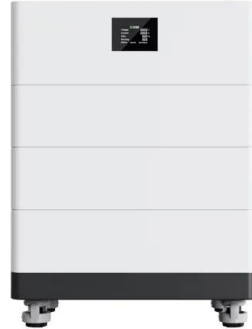


Power Steering Explained -- The Complete Guide

Power steering is a mechanical or hydraulic system designed to aid the driver in turning the wheels with minimal effort. It utilizes various components to reduce the physical exertion required to steer, allowing for ...



High Voltage Solar Battery

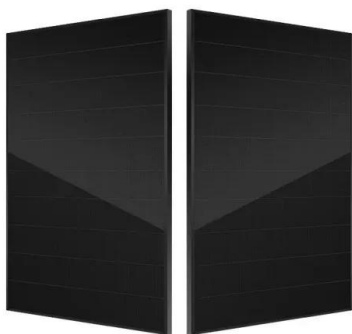


[Steering System: Types, Function & Components](#)

Power Steering System The power steering is added with some more parts and components to the rack and pinion system which makes it simplified and easy to use. In most of the cases the pump, pressure tubes, rotary control valve, fluid lines and a are the

What is Steering System? Definition, Components or Parts, ...

The power steering pump compresses the hydraulic fluid and guarantees that it enters the vehicle's power steering system, assisting the driver in its steering wheels. When traveling at normal speeds or when the vehicle is stationary, an electric or hydraulic fluid controls the power of the steering system, allowing the driver to steer the steering wheel with minimal effort.



An Illustrated Guide to Eps Electric Power Steering Diagrams

Learn about the electric power steering (EPS) system and how it works. Explore a diagram and understand the components of an EPS system. Electric power steering (EPS) systems are becoming increasingly popular in vehicles, replacing traditional hydraulic



An in-depth look at the power steering system diagram

A power steering system is an essential component in modern vehicles that helps the driver steer the vehicle with ease. It uses a combination of hydraulic and mechanical systems to assist in steering and control the direction of the vehicle. Understanding the



Electric Power Steering: Diagram, Parts, Types, ...

If the electric power steering fails, it causes the ESP warning light on the car's dashboard to turn on. The light usually illuminates as red or yellow, which means there is a problem with the power steering. #2 Poor ...

Understanding the Basics: Electric Power Steering System ...

At its core, the electric power steering system consists of three main components: the power steering control module, the electric motor, and the torque sensor. The power steering control module acts as the brain of the system, receiving input from the vehicle's sensors and sending signals to the electric motor.



Standard 20ft containers



Standard 40ft containers

What Is Power Steering System? Definition, Types & Working

The power steering system minimises the amount of effort required to steer a vehicle's front wheels by employing intermediate electric or hydraulic components. The steering wheel's force is multiplied to achieve a smooth and quick ...



How Power Steering System Works? - Best Explanation

In this article you will learn about power steering system - components, working, types with their detailed diagram and working video tutorial. you will also learn the working of hydraulic, hybrid or semi hydraulic and electric power steering with neat diagram.

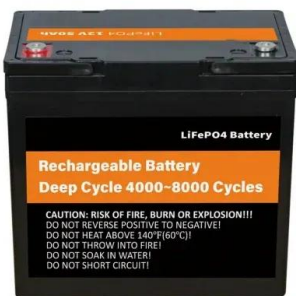


Understanding the Components: A Comprehensive Power ...

The main components of a power steering system include the power steering pump, power steering fluid, power steering hose, steering gear box, and steering wheel. Each of these parts ...

Essential Power Steering Parts and What they do

On newer cars, with rack and pinion steering, there are two main power steering parts, the pump, the rack and pinion unit and hoses. Listed below are all of the components in a modern power steering system, and the functions they serve. General System Function



[How Does the Steering System Work?](#)

There are also hydraulic hoses, a power steering pump, and other components that relate to the system too, depending on the design. The Mechanics of Steering: A Step-By-Step Guide When you turn the steering wheel, it rotates ...



Understanding the Power Steering System: A ...

The power steering system consists of several key components, including a power steering pump, steering gear, hoses, and a fluid reservoir. The pump is typically driven by the engine and creates hydraulic pressure that is used to ...



Power Steering

A power-steering system should assist the driver only when he is exerting force on the steering wheel (such as when starting a turn). When the driver is not exerting force (such as when driving in a straight line), the system shouldn't provide any assist. The device.

3 Types of Power Steering Systems , The Family Handyman

Early steering systems were simple mechanical mechanisms. Today's power steering is much more intricate. Without power steering, just about every vehicle -- from those classic mid-20th century behemoths to today's smaller, denser front-wheel-drive cars, crossovers and SUVs -- would be difficult to steer.

Lithium battery parameters

Product capacity: 100Ah

Product size: 135*197*35mm

Product weight: 1.82kg

Product voltage: 3.2V

internal resistance: within 0.5



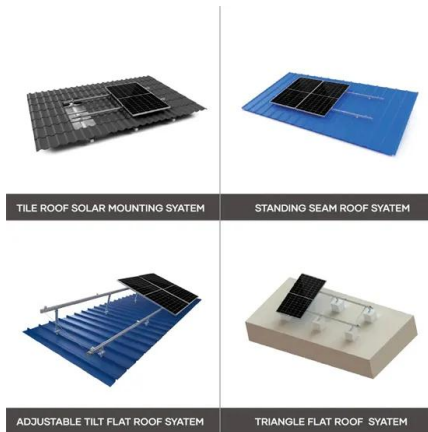
Steering Systems: Definition & Techniques , Vaia

Power Steering Systems: Reduce manual effort required by providing assistance through hydraulic or electric means, categorized into hydraulic and electric power steering systems. Hydraulic Steering System: Employs pressurized fluid to provide steering support; key components include power steering pump, hydraulic fluid, control valve, and hoses.



7 Types Of Steering Systems

Power Steering Systems Power steering is an essential component in modern vehicles, greatly enhancing the ease of steering and overall driving experience. It utilizes different systems to assist the driver in maneuvering the vehicle with minimal effort.



A Visual Guide to Power Steering Systems

The main components of a power steering system include a power steering pump, a steering gear, and hydraulic lines. The power steering pump is driven by the vehicle's engine and is responsible for supplying pressurized power ...

Contact Us

For catalog requests, pricing, or partnerships, please visit:
<https://www.vdbconstruction.co.za>