

# Configuring a three head and power pack strobe system





## Overview

---

What are the components of a strobe system?

There are basically three components to a strobe system. These consist of the electronic power supply, the Xenon flash tube and a three conductor shielded cable. The Xenon flash tubes used in Whelen products come in various shapes and sizes. The principal by which they operate are much the same.

Is strobe light power supply a high voltage device?

**WARNING!** The strobe light power supply is a high voltage device. Do not touch or remove tube assembly in strobe light head assemblies while in operation. Wait 10 minutes after disconnecting the unit from its power source before starting work or troubleshooting on the power supply or system.

How does a strobe power supply work?

The 7kv pulse causes the atoms of Xenon to align, once this occurs the 450-600 Volts generated by the strobe power supply conducts from anode (+) to cathode (-) through metal material at either end of the strobe flashtube. **WARNING!** - Reversed polarity of the input power for just an instant will permanently damage the power supply.

How do you check a power supply strobe?

Clear all possible shorts at the power supply and check the power supply operationally by marking and disconnecting all output cables from the power supply outlets and connect an operating strobe head assembly or a Strobe Check Unit (Whelen Part # TESTER) directly to the power supply outlet. Apply the required voltage to the power supply input.

When should you use a strobe light power supply?

Use them at all times this improves their proper functioning. Any strobe light power supply that has been out of service for long period of time is subject to failure because the electrolytic condenser loses the polarity formation. A



strobe light power supply not having been used for one year or longer is vulnerable to failure.

How do I test a remote strobe light power supply?

To test a remote strobe light power supply. Connect either one or both cables from the Strobe Check II Unit in place of the strobe lighthouse in question. Turn on the system and check to see if the ANODE lamp is glowing and if the T1 and/or the T2 lamps are flashing. If you have ANODE voltage and TRIGGER voltage, replace the strobe tube.



## Configuring a three head and power pack strobe system

---



### Photos of a Godox AD1200Pro head & pack strobe have leaked

The battery will offer 500 full power charges with 0.01-2 second recycle times. Although a separate head and pack aren't as easy to deal with than a single self-contained head, to get 1200Ws of Godox power before, you'd need to double up a pair of AD600s with.

### INSTALLATION INSTRUCTIONS FOR MODEL 600151 STROBE ...

I. GENERAL. The Federal Model 600151 strobe power supply is designed to operate on 11 to 16-volts DC (13.6 Vdc nominal). It is designed to power six remote strobe heads. This power ...



### [DMX Stage Lighting Systems](#)

An Overview of DMX. Image by VeldaZ Digital Multiplex (DMX) was developed as a standard digital theatre lighting control which replaced the older analogue systems that were used to control the dimmers in a stage lighting rig. Despite the advance in use of ethernet networking at the top of the professional lighting industry, DMX is still the best answer for most ...

### [REMOTE STROBE PACKS](#)

-3- (Electrical Connections CONT'D) Setting the High/Low - Head Select Jumper The RP966 and RP996 remote strobe packs allow you to choose whether you would prefer to have the ability to switch three pairs of heads On/Off separately OR



if you would like the



**REMOTE STROBE PACK REMOTE STROBE PACK Model ...**

Connecting The Remote Heads 1. Cable is required to connect the power pack to your remote strobe heads. Cable can be purchased from Star: Remote Power Pack Cabling Requirements ...



**1075KWHH ESS**

**13706: Aviation Strobe Power Supplies (A490TCF / A490TCCF)**

8. Specifically call out the location of the strobe light power supply on FAA form 337. Operation: MODEL A490TCF: This model operates one strobe light head. It is our most compact unit and can be mounted in the wingtip and/or the tail adjacent to the light



**A Guide to Strobe Arms for Underwater Photography**

Ball ended arm systems use rigid lengths of arm tipped with 1" balls held together with clamps. Flexi arms tend to be made of interlocking plastic sections with a strobe mount at one end and either a fitting to attach to a tray or actually built into a tray. Flexi arms



**48V 100Ah**



## Technical Note: Configuring a Multi-Phase and Parallel Systems ...

This technical note discusses how to successfully configure your Asterion AC in multi-phase or parallel groups with the available communication options. Performance. Reliance. Brilliance. Inspired by the enduring power of a brilliant star, the California Instruments Asterion line of AC power sources by AMETEK Programmable Power combines intelligence and flexibility to ...



## Buzz Here! Roof Strobe Light troubleshooting information for the C2.

Step 5: Try a new strobe light bulb. If system still does not work it is the power pack. Use all safety precautions when replacing strobe bulb. Refer to test procedure #41 on your TD-18 to file for warranty. Carolina Thomas Bus Buzz # 41 PDM

## REMOTE STROBE PACKS

When mounting the power pack and accessories, please be sure to keep any radio frequency sensitive equipment at least 20" from the power pack, cables, and/or wires which make up your ...



## Strobe Flash Heads for Photographers (BEGINNERS GUIDE)

Note: Power settings on a strobe head are not correlated or connected to your camera's shutter speed. Though you will only be able to use certain shutter speeds when shooting with a strobe flash (typically the fastest sync speed is around 1/200th), the shutter speed you choose doesn't affect the brightness of the flash.



### Portable Strobe Power Packs

With the Broncolor Satos 3200 J Power Pack, you can control your lights on three channels and with the Dual Power Management this new generation of power packs will never let you down. Satos is the latest power pack that offers unparalleled control over your lighting setup.

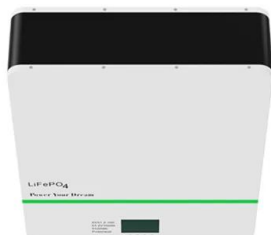


### Power Pack & Strobe Lighting

Strobe lights can be speedlights, monolights, or come with a power pack system. They are known for their ability to freeze motion, providing sharp images even with moving subjects. Benefits of Using Power Pack & Strobe Lighting High Intensity: Strobe lights produce a high-intensity burst of light, which can be beneficial in low light conditions or when trying to overpower the sun during

### **Strobe System**

The Strobe System includes the Strobe Control Box and one Strobe Module. Additional Strobe Modules can be purchased separately (see below) for up to a total of four lamp modules per controller, and multiple control boxes can be connected together using the External Trigger.



### Polaris RZR Power Control System with Strobe

Plug and Play Easy Install Fits RZR XP and most UTV's 6 Switch System, One Switch included with Red LED Strobe Rocker 2 Channel Strobe Built In - 10AMP Each with Strobe Rocker Switch Two 20 AMP High Power Relayed and Three 10 AMP Direct Circuits



REMOTE STROBE PACKS

STROBE OUTLETS POWER PLUG ENABLE PLUG  
HIGH/LOW - HEAD SELECT JUMPER POWER Plug  
The power plug is included with your power pack  
and comes complete with an 8-12" wiring  
harness. This will be connected to the outlet on  
your pack .



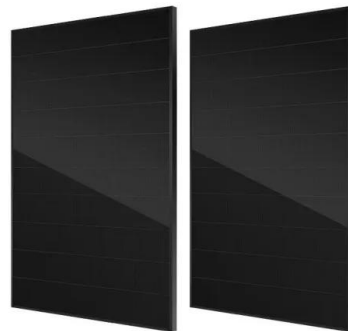
**Strobe Power**

Strobe is revolutionizing the power marketing process with AI-driven tools that automate forecasting, bidding, scheduling, and dispatching of power generation. Strobe's real-time automation optimizes distributed generation assets for operators, developers, and owners. Strobe's SaaS product "Exp



**Beginner's studio flash -- A Year With My Camera**

Although you can get some high-power hotshoe flashes, even the most rudimentary studio strobe is likely to produce a lot more light (and will probably cost a lot less as well). This means you can illuminate a larger area while simultaneously using smaller apertures and lower ISO settings than you would have to use with a hotshoe flash.



**REMOTE STROBE PACK  
PACK Model ...**

When mounting the power pack and accessories, please be sure to keep any radio frequency sensitive equipment at least 20" from the power pack, cables, and/or wires which make up your strobe system. The pack has been designed to limit RFI emissions



[Shop Power Pack Strobe Kits Online](#)

At Georges Cameras, our selection of power pack strobe kits offers comprehensive lighting solutions designed for professional photographers who demand precision and power in their lighting setups. These kits typically include a power pack, one or more strobe

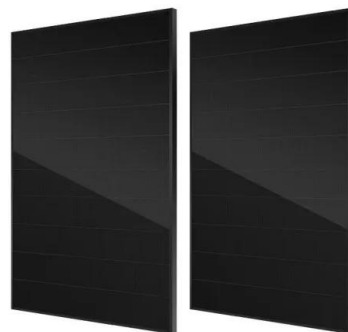


**DIY Strobe Power Pack Issues w/Multiple Lights**

I recently built a portable battery pack to power my (2) Alien Bees B800 strobes in the field. After watching tons of tutorials and reading some forum postings here, I built the kit ...

**Strobe and Flash Lighting for Photography , B& H eXplora**

Power packs and strobe heads give photographers the most powerful flash options, ranging from 150Ws to over 6000Ws. Lightweight strobe heads. Because the strobe lights are separate from the power source and capacitors, they are relatively lightweight.



[Argus USBP \(Universal Strobe Battery Pack\)](#)

ARGUS USBP PRE-ORDER (lead time ~30 days)  
Argus USBP (Universal Strobe Battery Pack) is a remote battery pack for your BNVD-1431. It uses 4xAA batteries. It comes with a Fischer cable. These are ONLY for compatible night vision goggles such as the BNVD-1431, BNVD-931, BNVD PVS-31A, GPNVG. The USBP cable will NOT work with LEMO connections like ANVIS, ...



[How To Build A Slick Strobe Power Pack](#)

Canon adds three new f/1.4 prime and f/2.8 zoom lenses to its hybrid RF lineup Oct 30, 2024  
John Aldred Today we are going to show you how you can build an external slick battery power pack for a Canon strobe (we ...



- 50KW/100KWH
- HIGHER POWER OUTPUT IN OFF-GRID MODE
- CONVENIENT OPERATION & MAINTENANCE
- PRE-WIRED



**Accessibility**

These systems have been around for over sixty years. A pack and head system consists of a strobe/flash that gets its power from a box filled with capacitors and switches. You attach the head cable to an outlet on the box, position the head where desired, and

[PLSB S02 Strobe-Packs-Heads](#)

TOPAS PACKS/ACCESSORIES STROBE LIGHTING  
BRONCOLOR PACKS & HEADS 18 PHOTO - VIDEO  
- PRO AUDIO TOPAS POWER PACKS FEATURES  
TOPAS A2 The Topas A2 is a 1600Ws pack that fea-tures symmetrical or asymmetrical -selectable



**CODE 3 PSE440 INSTALLATION & OPERATION MANUAL Pdf ...**

1. Install the remote strobe light heads in the preferred locations and route the three wire cable from the remote strobe heads to the PSE440 power supply. Leave enough cable at the power ...



## STROBE TROUBLESHOOTING GUIDE

output cables from the power supply outlets and connect an operating strobe head assembly or a Strobe Check Unit (Whelen Part # TESTER) directly to the power supply outlet. Apply the ...



## Shop Power Pack Strobe Heads Online

At Georges Cameras, our selection of power pack strobe heads is designed for professional photographers who require robust, high-intensity lighting for studio and location shoots. These strobe heads, when paired with external power packs, offer exceptional power

### **How do Strobe Power Packs distribute power? : ...**

It depends on the make, but you choose how to distribute the power through switches, dials, or plugging heads into different plugs. Speedotron packs required unplugging heads and ...



## **Contact Us**

---

For catalog requests, pricing, or partnerships, please visit:  
<https://www.vdbconstruction.co.za>