

Cooper power systems cutouts





Overview

What is a Cooper Power cutout?

For the ultimate in reliability and dependability, Cooper Power series cutouts provide superior performance in harsh climates, including reduced cracking and breakage. Loadbreak cutout consists of a heavy-duty arc reducing load interrupter mounted to the cutout frame.

What are the different types of Eaton distribution class cutouts?

Eaton's Cooper Power series distribution class cutouts are available in a variety of types: universal, arrester combinations and loadbreak types. All cutouts provide reliable overcurrent protection for primary distribution systems.

Are Cooper Power Systems Transformers ISO 9001 certified?

The Quality System at Eaton's Cooper Power Systems Transformer Products is ISO 9001 certified. Eaton, Cooper Power Systems, MagneX, VariSTAR, Evolution, PEAK, UltraSIL, and Storm Trapper are valuable trademarks of Eaton in the U.S. and other countries. You are not permitted to use these trademarks without the prior written consent of Eaton.

Does Eaton offer insulated cutouts?

Eaton's Cooper Power series UltraSIL polymer-insulated cutout incorporates an industry-recognized silicone rubber insulating material with superior hydrophobic qualities. Eaton offers cutout polymer designs, which provide reliable overcurrent protection for primary distribution circuits.

What voltage is a polymer cutout?

Polymer and porcelain Type L cutouts are available in 15.5 kV and 27 kV voltage ratings. Both polymer and porcelain Type L cutouts are available with a 100 A or 200 A fuse holder or with a 300 A disconnect blade. The key for both polymer and porcelain Type L cutout designs is fuseholder



interchangeability.

Are Cooper Power Systems Transformers reliable?

Single-phase overhead-type transformers manufactured by Cooper Power Systems provide outstanding performance. All transformers from Cooper Power Systems pass tests as prescribed by ANSI® prior to shipment. Cores and coils are designed for high reliability and low field failure rates.



Cooper power systems cutouts



Cooper Power Systems S4B1E1A Cutout Type L 15Kv 100A 10Ka ...

L-cutout 100A Interrupt sym: 7100A 15.5 kV NEMA B brkt(5" bolts) Polymer BIL: 110 kV Fuse holder: 100A Bottom: Small eyebolt Cooper Power Systems S4B1E1A Cutout Type L 15Kv 100A 10Ka Sm Eyblt Std Cap , Irby Utilities

COOPER

Electrical ratings Electrical insulation ratings for the polymer and porcelain Type L cutouts are shown in Table 1. All cutouts have been tested in accordance with IEEE Std C37 .40E-2003, IEEE Std C37 .41-2008 and IEEE Std C37 .42E-2009 . Figure 4 . Parallel

18650^{3.7V}
RECHARGEABLE BATTERY
Li-ion
2000mAh



[CMU medium voltage power fuses](#)

2 Catalog Data CA132038EN Effective September 2019 CMU medium voltage power fuses Application The CMU power fuses provide effective protection for circuits and equipment which operate on system voltages up to 34,500 V.

HX open distribution cutout catalog HX open distribution cutout ...

Eaton's Cooper Power series HX open distribution cutouts can be quickly and economically adapted to double current rating or higher interrupting ratings as load and system capacity increases dictate. Simple blade changeout makes 300 A



disconnects out of



[HX-CB loadbreak fuse cutout catalog](#)

This catalog describes features and ordering information for Eaton's Cooper Power series HX-CB Loadbreak fuse cutout which provides superior performance with the combination of the field ...

FAK44W6 , Eaton Cooper Power series current limiting full range ...

Eaton Cooper Power series current limiting full range fuse, Cutout, 15.0 kV, Distribution C, 27 kV, 6A, 520 min melt I2t, 4550 max clear I2t, 43 kA max interrupt current, ELF Add a free sample to the cart Contact us

Support Customized Product



Eaton's Cooper Power Systems catalog Overhead transformers ...

handling. All coating systems exceed IEEE Std C57.12.31 -2010 standard. The Quality System at Eaton's Cooper Power Systems Transformer Products is ISO 9001 certified. Fluid options Transformers can be filled with standard electrical grade mineral



Cooper Power Systems 4000358C12B 50A Cutout Fuse Link ...

Manufacturer: Cooper Power Systems / Eaton ,
Catalog # 4000358C12B , Irby Part # 553657
Call For Price Compare Log in or register to
view your price, purchase history, and more!



[CA132008EN Edison Fuse Links](#)

Edison fuse links are manufactured in removable and non-removable buttonhead designs for use in open or enclosed distribution cutouts. Standard links are usable where the system voltage is ...

[Cooper Power Systems S9DAP1A](#)

Eaton Cooper Power Series L-Cutout, 100A, Interrupt Sym: 8000A, 27 Kv, Nema B Brkt(5" Bolts), Polymer, Bil: 150 Kv, Fuse Holder: 100A, Bottom: Parallel Groove Connector View product detail below Associated



[Eaton's Cooper Power series cutouts](#)

2 ???· Eaton's utility field application engineer, Don Wareham, provides an short demonstration of Eaton's Cooper Power series fuse cutouts. Learn more at <https://>



327-30 Open Distribution Cutout

Fusing Equipment Open Distribution Cutout - UltraSIL and Porcelain Type L Electrical Apparatus 327-30 September 2007 o Replaces 08/07 1 Printed in U.S.A. DESCRIPTION Cooper Power Systems has set a new standard of excellence for polymer distribution



Cooper Power Systems L4B2P0A 15Kv 200A Fuse Cutout

L-cutout 200A Interrupt sym: 8000A 15.5 kV No brkt Porcelain BIL: 110 kV Fuse holder: 200A Bottom: Parallel groove connector Cooper Power Systems L4B2P0A 15Kv 200A Fuse Cutout , Irby Utilities Log In

Cooper Power Systems S4B2P1A

Eaton Cooper Power Series L-Cutout, 200A, Interrupt Sym: 8000A, 15.5 Kv, Nema B Brkt(5" Bolts), Polymer, Bil: 110 Kv, Fuse Holder: 200A, Bottom: Parallel Groove Connector View product detail below Associated



S9DAP0A , Eaton Cooper Power series L-cutout , Eaton

Energy storage systems Engine solutions Filtration solutions Fuel systems, emissions and components Furniture Golf grips Eaton Cooper Power series L-cutout Catalog Number S9DAP0A UPC 194006033664 Product Length/Depth 19.6 in Product Height 13.





Cooper Power Systems FL3K25 25A Cutout Fuse Link

Eaton Cooper Power Removable buttons allow fuse links to be used in all open and enclosed cutouts including cutouts with arc-shortening rods. Fuse link type is marked on length of tube to aid in identification of fuse type. Ampere size is marked on top of screw

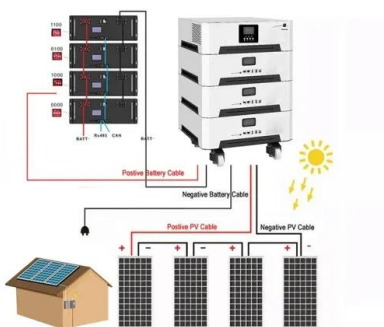


Cutouts , distribution class , overcurrent protection , Eaton

Eaton's Cooper Power series distribution class cutouts are available in a variety of types: universal, arrester combinations and loadbreak types. All cutouts provide reliable overcurrent ...

Cooper Power Systems FL16K15 15A Cutout Fuse Link

Manufacturer: Cooper Power Systems / Eaton , Catalog # FL16K15 , Irby Part # 3569553 *Call For Price* Compare Log in or register to view your price, purchase history, and more! Usually ships within 8 to 12 days



Search results

Shop for Fuse Cutouts from Cooper Power Systems at Platt UltraSIL Polymer-Insulated Type L Cutout, Voltage: 15.5 kV,Insulation Rating: 110 kV BIL, 100 A High Interrupting, Parrallel groove connector, #8 solid (.128 Dia) to 250 MCM (.575 Dia), Extended Bracket



Cooper Power Systems 4000358C10B 25A Cutout Fse Link ...

Manufacturer: Cooper Power Systems / Eaton ,
Catalog # 4000358C10B , Irby Part # 69269
Call For Price Compare Log in or register to view your price, purchase history, and more!



YS4BAP2A , Eaton Cooper Power series LB-cutout , Eaton

Power systems automation and control
Prefabricated electrical systems - integrated design and installation Preventive maintenance
Eaton Cooper Power series LB-cutout, 100A,
Interrupt sym: 10,600A, 15.5 kV, NEMA B brkt(6" bolts), Polymer, BIL: 110 kV



Eaton Cooper Power Series Installation Instructions Manual

View and Download Eaton Cooper Power Series installation instructions manual online. Polymer-insulated and porcelain Types L and LB open distribution cutout. Cooper Power Series ...



[Eaton's Cooper Power series cutouts](#)

3:49 Eaton's utility field application engineer, Don Wareham, provides an short demonstration of Eaton's Cooper Power series fuse cutouts. Eaton's Engineering Services electrical training programs , Eaton PSEC 8:43 Learn about Eaton's Engineering Services



EATON COOPER POWER SERIES INSTALLATION AND MAINTENANCE INSTRUCTIONS

Page 1 COOPER POWER Distribution Transformers SERIES Effective August 2015 MN202001EN Supersedes S210-12-1 August 2013 Three-phase pad-mounted compartmental type transformer installation and maintenance instructions Page 2 CONTENTS OF THIS DOCUMENT SHALL NOT BECOME PART OF OR MODIFY ANY CONTRACT BETWEEN ...



Our Lifepo4 batteries can be connected in parallel and in series for larger capacity and voltage.

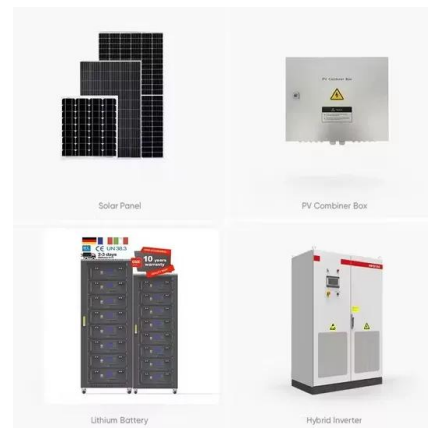


[CA132008EN Edison Fuse Links](#)

For higher voltages, Edison fuse links are available for systems up to 38 kV. In addition, Eaton provides open-link (STF) designs for use in open-link style distribution cutouts. A wide variety of open links are available for system voltages at 15 kV or less. Edison

[Eaton's Cooper Power series cutouts](#)

Eaton's utility field application engineer, Don Wareham, provides an short demonstration of Eaton's Cooper Power series fuse cutouts. Video Home Follow us: Like on Facebook Follow on X Connect on LinkedIn



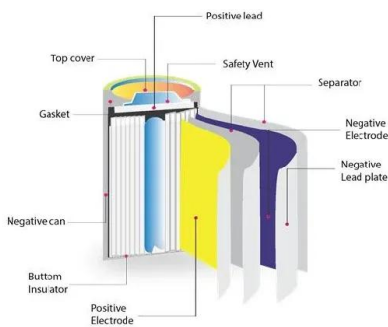
New Cooper Power Systems Cutouts & Fuse Links ...

New Cooper Power Systems Cutouts & Fuse Links S327-30-1 New Cooper Power Systems Cutouts & Fuse Links S327-30-1 (No reviews yet) Write a Review Write a Review Close x New Cooper Power Systems Cutouts & Fuse Links ...



Cutouts and Fuse Links

and other Cooper Power Systems fuse links as well as catalog section K-SEC 030 for all Kearney links. When selecting a cutout or fuse, it is important to consider future load growth and other planned system expansion. Cooper Power Systems offers full-range



[Cooper Power Systems S4BAP1A](#)

Eaton Cooper Power Series L-Cutout, 100A, Interrupt Sym: 10,600A, 15.5 Kv, Nema B Brkt(5" Bolts), Polymer, Bil: 110 Kv, Fuse Holder: 100A, Bottom: Parallel Groove Connector View product detail below Associated

Cooper Power Systems

View our extensive selection of Cooper Power power fuses from Monster Electrical. Our power fuses are available for immediate shipment from our extensive inventory. Javascript is disabled on your browser.



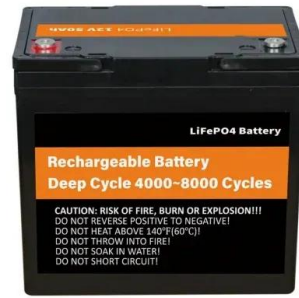
Cutouts and Fuse Links COOPER POWER TD008012EN ...

Cutouts and Fuse Links COOPER POWER TD008012EN Effective July 2017 Supersedes August 2012 (R327-01-1) SERIES Type L interchangeable cutouts, mounting frames, fuseholders, and ...



[Cooper Power Systems L4B2P1A](#)

Eaton Cooper Power Series L-Cutout, 200A, Interrupt Sym: 8000A, 15.5 Kv, Nema B Brkt(5" Bolts), Porcelain, Bil: 110 Kv, Fuse Holder: 200A, Bottom: Parallel Groove Connector View product detail below Associated



Contact Us

For catalog requests, pricing, or partnerships, please visit:
<https://www.vdbconstruction.co.za>