

Counterweight pile photovoltaic support installation requirements





Overview

What are the requirements for a PV installation?

Virtually all domestic PV installations will fall under the scope of Part P. Part P requires the relevant Building Control department to be notified and approve the work. There are two routes to comply with the requirements of Part P: Notify the relevant Building Control department before starting the work.

How should a PV system be designed & installed?

From the outset, the designer and installer of a PV system must consider the potential hazards carefully, and systematically devise methods to minimise the risks. This will include both mitigating potential hazards present during and after the installation phase.

Why should you choose a PV support system?

A safe and economical PV support system is the focus of attention. As an important component of a PV power plant, PV supports carry the main body of the PV power plant for power generation. The choice of bracket directly affects the operational safety, breakage rate and construction investment of PV modules.

Are there any UK standards relating to a PV installation?

While many UK standards apply in general terms, at the time of writing there is still relatively little which specifically relates to a PV installation. However, there are two documents which specifically relate to the installation of these systems that are of particular relevance:.

What is a roof mounted photovoltaic system guidance?

The guidance refers only to the mechanical installation of roof mounted integrated and stand-off photovoltaic systems; it provides best practice guidance on installation requirements and does not constitute fixing instructions.



What considerations should be taken during installation of solar panels?

During installation, several key considerations must be taken into account to ensure the success of the project. Alignment is crucial; maintaining proper alignment of the piles is essential to prevent issues during the installation of solar panels.



Counterweight pile photovoltaic support installation requirements



Understanding the Importance of Solar Piles in Installation

The Importance of Pile Drivers in Solar Power Plant Construction. Solar and battery storage are estimated to account for 81% of new U.S. electric-generating capacity in 2024. Solar is ...

Structural Requirements for Solar Panels -- Exactus Energy

By considering specific guidance on material selection and construction specifications, ballasted system installations can achieve the proper balance between flexibility ...



Why soil conditions are important to solar foundation design

The static axial capacity of piles typically changes as time elapses after the test post installation, depending on soil/rock properties, pore water pressure and soil structure ...



Calculation Theory of Counterweight Double-Row Pile Support ...

Sustainability 2023, 15, 6184 4 of 14 3. Design Theory Analysis of Counterweight Double-Row Pile 3.1. Calculation Model The calculation model of counterweight double-row pile is based ...



8 Types Of Foundations Commonly Used In Photovoltaic Brackets

A reasonable form of photovoltaic support can improve the system's ability to resist wind and snow loads, and the reasonable use of the characteristics of the photovoltaic ...



Types of Ground PV Systems with Different ...

Photovoltaic array foundations mainly include concrete embedded parts foundations, concrete counterweight block foundations, spiral ground pile foundations, directly embedded foundations,



Standards and Requirements for Solar Equipment, Installation, ...

The installation of rooftop solar PV systems raises issues related to building, fire, and electrical codes. Because rooftop solar is a relatively new technology and often added to a building after ...





Sensitivity Analysis of Counterweight Double-Row Pile ...

adopts a counterweight double-row pile support structure. The foundation pit is excavated in three layers, with the first layer excavated to a depth of 2.7m, the second layer to a depth of 8.6m, ...

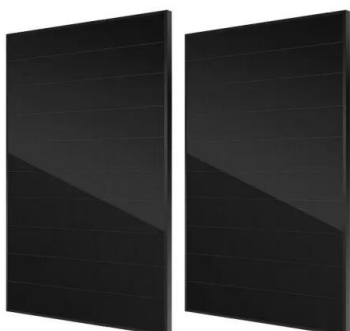


Calculation Theory of Counterweight Double-Row Pile Support ...

The theoretical calculation of a counterweight double-row pile supporting structure is deduced and studied in this paper. The derived calculation method is applied to a Midas GTS NX simulation ...

Comparison and Optimization of Bearing Capacity of Three Kinds ...

As the primary load-bearing element of the photovoltaic system, the PV racking pile foundation supports the system's weight and external loads while also impacting the over- ...



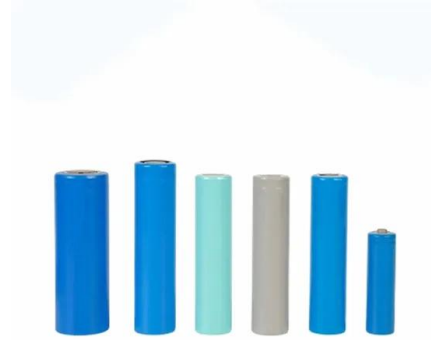
Do you know how many types of PV system foundations there are?

3. Helical ground pile foundation. Spiral ground pile foundation is an increasingly widely used form of PV support foundation in recent years. Ground screw piles are caused by ...



Foundations of Solar Farms: Choosing the Right Piles ...

Step-by-Step Pile Installation Process. The pile driving installation process begins with site clearing and preparation--which involves removing any vegetation, debris, or obstructions that could interfere with the ...



Photovoltaic ground bracket installation options

The installation selection of photovoltaic ground brackets is mainly based on factors such as the fixing method of the bracket, terrain requirements, material selection, and the weather ...

Sensitivity Analysis of Counterweight Double-Row Pile ...

adopts a counterweight double-row pile support structure. The foundation pit is excavated in three layers, with the first layer excavated to a depth of 2.7m, the second layer to ...



Solar Pile Driver SPV-50Y Solar Pile Driving Machine

In conclusion, the SPV-50Y is a vital piece of equipment for the installation of support piles in solar PV systems. Its versatility, powerful hydraulic capabilities, and precise positioning ...



Foundation Alternatives for Ground Mount Solar Panel Installations

A rooftop solar PV system requires 21 to 54% less input energy, emits 18 to 59% less CO2eq. of greenhouse gas emissions, and consumes a reduced quantity of water ranging ...



Sensitivity analysis of counterweight double-row pile ...

In order to solve the challenges of tight construction schedule and high deformation control requirements in the reclamation area, a combined method of ...

Solar Tracking System: Working, Types, Pros, and Cons

Adding solar trackers can significantly raise the price of a PV system installation. For instance, a standard 4-kilowatt ground-mounted solar system costs approximately ...



Design and Analysis of Steel Support Structures Used in Photovoltaic ...

The results show that: (1) according to the general requirements of 4 rows and 5 columns fixed photovoltaic support, the typical permanent load of the PV support is 4679.4 N, ...



How much do you know about photovoltaic array basics?

Spiral pile foundation is a form of photovoltaic support foundation that has become increasingly widely used in recent years. Spiral piles are made of hot-dip galvanized ...



Calculation Theory of Counterweight Double-Row Pile Support ...

The theoretical calculation of a counterweight double-row pile supporting structure is deduced and studied in this paper. The derived calculation method is applied to a ...



Foundations for Ground Mounted Solar Installations

Ground-mounted systems are probably the simplest way to install solar on a larger scale compared to other types of installations such as roofs or parking structures. These ...



Necessary accessories for PV installation: brackets

A safe and economical PV support system is the focus of attention. As an important component of a PV power plant, PV supports carry the main body of the PV power plant for power generation. The choice of bracket directly affects the ...



Installation and safety requirements for photovoltaic

Installation and safety requirements for photovoltaic (PV) arrays. on Friday 19 November 2021. With the release of AS/NZS 5033:2021, sections of these Guidelines have been superseded ...



Photovoltaic support with stable counterweight

The utility model relates to the technical field of photovoltaic supports and discloses a counterweight-stabilized photovoltaic support which comprises a bottom frame, wherein a ...

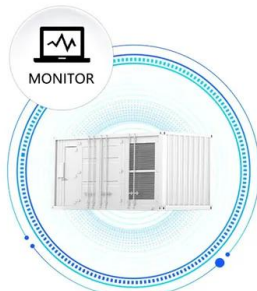


A Full Guide to Photovoltaic Array Design and Installation

Components of a Photovoltaic System. A photovoltaic system consists of various components that work together to convert sunlight into electricity. The main ...



SUPPORT REAL-TIME ONLINE MONITORING OF SYSTEM STATUS



Special Report on Offshore Photovoltaics: The Main ...

Their design needs to be compared and selected, and the floating system that can meet the service life of 25 years is selected; There are three parts to the pile anchoring system; the laying system includes two parts: ...

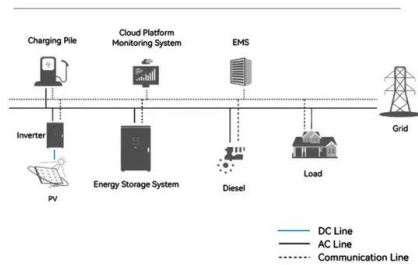


Types of PV Mounting Brackets

Pile mounting systems: Most of these supports are HDG steel supports, which are directly driven into the soil through a pile driver, and the pile and the support structure are integrated. 4? ...



System Topology



Solar PV Support Structure Piling Column System ...

ground screw mounting manufacturer- PandaSolar supplies Solar PV Support Structure Piling Column System Supplier in best price, 100% quality guaranteed, wholesale ground screw mounting quickly!

Sensitivity analysis of counterweight double-row pile

top to bottom. The pit design employs a cantilevered double-row pile support structure. The front row piles are 1.2 m @ 1.8 m interlocking piles arranged in an alternating pattern, while the back ...



Contact Us

For catalog requests, pricing, or partnerships, please visit:
<https://www.vdbconstruction.co.za>