

Dimensional specifications of photovoltaic panels





Overview

As you can imagine, you can get almost any size solar panel you desire, from single tiles to ones that cover the entire roof. There are even companies that will craft custom and bespoke solar panels for your roof. However, if you have a particularly small roof there's no need to be too worried as you can still install solar.

The majority of solar panels for sale in the UK average around 350 watts (W) in power for residential units. However, it's quite easy to get your hands on more powerful solar panels, often up to 500 W if you have an extra large.

If you have a small home or want to power mobile vehicles like caravans and campervans, the good news is that there are many smaller-sized systems available. This includes small solar.

Below we have detailed some of the most common solar panel installations in the UK for domestic properties. Please note that both the costs and final power outputs are rough estimates and it's obviously not possible to know these as.

What are solar panel dimensions?

Solar panel dimensions indicate the length, width, and thickness of the panels, giving you a better indication of how much space they will take up on your roof. Currently, some of the most common solar panel sizes are 350W and 450W solar panels.

What is the difference between solar panel size and dimensions?

Solar panel size indicates the amount of energy that is produced by your system, while solar panel dimensions indicate the physical size of the solar panel. The average 350W solar panel has the dimensions of 190cm x 100cm x 4cm. On average, domestic solar panels weigh somewhere between 18 and 21kg.

What are the dimensions of a residential solar panel in the UK?

The typical dimensions of a residential solar panel in the UK is 189cm x 100cm



x 3.99cm (length, width and height) Solar panel weight is a crucial factor to consider when planning a rooftop solar installation. The weight of the panels, along with the mounting equipment, adds a significant load to your roof structure.

How much does a 350W solar panel weigh?

The average 350W solar panel has the dimensions of 190cm x 100cm x 4cm. On average, domestic solar panels weigh somewhere between 18 and 21kg. To be able to choose the right solar system for your home, you will need to know more about solar panel sizes, dimensions, and wattages.

What size solar panel do I Need?

The most common solar panel sizes for residential installations are between 250W and 400W, while larger commercial installations may use panels up to 500W or more. The size of a solar panel affects its efficiency, with larger panels generally being more efficient but also more expensive and heavier.

Is solar panel size the same as solar array size?

As such, solar panel size shouldn't be confused with solar array (or, if you prefer, solar system) size.



Dimensional specifications of photovoltaic panels

Solar Panel



Monocrystalline solar panels are made from single-crystal silicon, resulting in their distinctive dark black hue. This uniform structure, with fewer grain boundaries, ensures high purity, granting them the highest ...

450 Solar Panel, 450 Watt Solar Panel Specifications

Uncover the Power of the 450 Solar Panel , Unbeatable Price & Specs - INLUX Solar. Get amazed by the tremendous output and compact dimensions of the 450 watt solar panel, ...



[Solar Panel Dimensions Sizes and Wattage](#)

Monocrystalline solar panels. They comprise monocrystalline silicon cells, which offer high efficiency and a neat aesthetic (black-colored cells). Their dimensions vary ...

Solar Panel Specifications: Reading a Solar Panel Datasheet

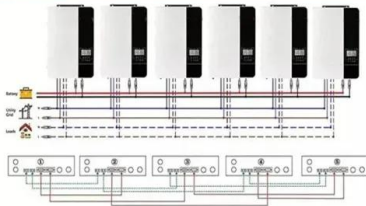
Standard solar panel specification sheet: Page 2. Page 2 usually gives panel dimensions, and other mechanical data such as weight, details of the frame and of the glass ...



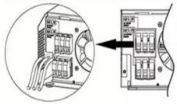
Our Lifepo4 batteries can be connected in parallels and in series for larger capacity and voltage.



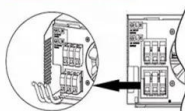
Parallel (Parallel operation up to 6 Unit (only with battery connected))



AC input wires



AC output wires



Guide to Solar Panel Sizes & Dimensions (November ...)

Solar panel size refers to the total amount of power a solar panel can generate over a period of time; Solar panel dimensions refers to the physical size of a solar panel; Solar panel sizes and wattage range from 250W ...



Solar Panel Size: Dimensions Guide

Besides size and dimensions, solar panel power output is also determined by the energy efficiency of the system. Solar panel efficiency is the percentage of daylight turned into ...



Solar Panel Sizes (Energy Use & Dimensions Guide)

Commercial Panel Dimensions. Commercial solar panels have larger dimensions than their residential counterparts. For example, a residential solar panel system can measure 65 by 39 ...



Solar Photovoltaic Panel Sizes: A Complete Guide

Shorter lifespan - this solar panel size typically lasts for 10-20 years. Frequently Asked Questions. To understand solar panel size better, here's a list of FAQs about the best solar ...



Solar Panel Sizes & Dimensions (UK): Simply Explained

Solar panel dimensions & sizes (UK): Simply explained. When it comes to investing in solar energy, Specification Residential Solar Panels Commercial Solar Panels; Dimensions: ...

100 Watt Solar Panel Specifications

In this article, we will be discussing 100-watt solar panel specifications for solar panels that are sold through Shop Solar Kits Specifications of 100-Watt Solar Panels The main ...



CE UN38.3 MSDS



Solar Panel Dimensions & Weight in Australia: The Ultimate Guide

Solar panels come in a standard 1.70m x 1.0m, with an output that ranges from 250 to 340 watts. The variation in output will usually not change the size of a single solar ...



Solar Panel Sizes, Dimensions & Wattages: UK Guide 2024

Solar panel size indicates the amount of energy that is produced by your system, while solar panel dimensions indicate the physical size of the solar panel. The ...



Solar Panel Sizes And Wattage , Sizing, Dimensions & Weight

The size or dimensions of the solar panels, measured in height by width, will determine the number of solar panels that will fit on your roof and the wattage of solar panels ...

Standard Solar Panel Sizes And Wattages (100W ...

As we can see, those 60-cell, 72-cell, and 96-cell solar panel dimensions are a bit theoretical. These are the practical solar panel dimensions by wattage from solar panels that are actually sold on the market (made by SunPower, Panasonic, ...



Solar Panel Dimensions: Average Size Explained

Solar panel dimensions are relevant as there is a direct correlation between size and the amount of energy they might generate. There are many other factors to consider but, ...



Solar Panel Size And Weight: A Comprehensive Guide

To select the right solar panel size, it is important to know the standard solar panel sizes available on the market. Every solar panel consists of solar cells, which are ...



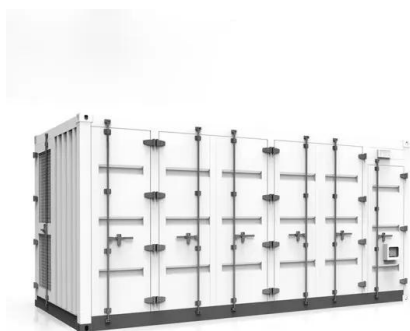
Ultimate Guide to Solar Panel Sizes, Dimensions & How Many Solar Panels

Dimensions of a standard solar panel. The dimensions of a standard residential solar panel play a pivotal role in choosing the right size panels depending on the size of your ...



Solar panel sizes: Find solar panels in the right size ...

Solar panel size is one of the secrets to getting the best return on your solar investment. There's an increasing choice of high-efficiency solar panels that are small in dimensions but big on power. These panels have particularly high ...



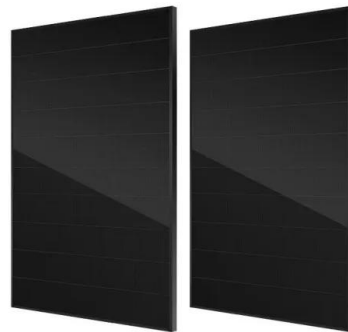
[Solar Panel Dimensions Chart](#)

You can fold a thin-film solar panel. It uses less material than a conventional solar panel, so it costs much less. Source: goexplorer . For this reason, it is much thinner than a monocrystalline or polycrystalline solar panel. ...



Solar panel sizes and wattages , The Independent

Solar panel wattage x sunshine hours x modifier = solar panel power output Plugging in the figures from our hypothetical example, you get: 400W x 4.3 x 0.75 = 1,290Wh



Top 7 Best 400-Watt Solar Panels in 2024 (Cost, Specs & More)

400 W is the most popular solar panel size today, with a ton of options to choose from. In this article, we list the best 400 W panels on the market. Top 7 Best 400 ...

Solar Panel Sizes & Dimensions

Sizes and dimensions of solar panels: Solar panel size: Dimensions: 60-cell solar panel: 3.25 feet x 5.5 feet: 72-cell solar panel: 3.25 feet x 6.42 feet: 96-cell solar panel: ...



How Big Is A Solar Panel? Dimensions And Sizes

The solar panel industry showcases a dynamic interplay between panel size and efficiency, a relationship that fundamentally shapes the performance and practicality of ...



Solar Panel Dimensions and Sizes: Complete Guide

Solar Panel Dimensions of the Three Common Types of Panels. 60-Cell Solar Panels. The standard solar panel size, the 60-cell is structured as a 6x10 grid and measures 3.25 feet by ...



- LiFePO₄
- Wide temp: -20°C to 55°C
- Easy to expand
- Floor mount&wall mount
- Intelligent BMS
- Cycle Life:≥6000
- Warranty :10 years



Solar Panel Sizes & Dimensions UK (Do they even matter?)

Therefore, consider solar panel dimensions to get an idea of the overall scale of a proposed solar system. In terms of dimensions, domestic solar panels average 1.7 metres ...

Solar Panel Sizes & Dimensions In The UK (2024)

Understanding Solar Panel Dimensions and Sizes. Solar photovoltaic (PV) systems contribute to environmental conservation by reducing carbon footprint, lowering energy costs, and providing independence from the ...



Solar Panel Sizes, Dimensions & Weight

The more solar cells contained on a solar panel, the more power that panel can generate. Typically solar cell sizes have been 156mm x 156mm, however, they have been increasing over the last 3-4 years which has been ...





Contact Us

For catalog requests, pricing, or partnerships, please visit:
<https://www.vdbconstruction.co.za>