

Dimensions of large photovoltaic panels





Overview

As you can imagine, you can get almost any size solar panel you desire, from single tiles to ones that cover the entire roof. There are even companies that will craft custom and bespoke solar panels for your roof. However, if you have a particularly small roof there's no need to be too worried as you can still install solar.

The majority of solar panels for sale in the UK average around 350 watts (W) in power for residential units. However, it's quite easy to get your hands on more powerful solar panels, often up to 500 W if you have an extra large.

Below we have detailed some of the most common solar panel installations in the UK for domestic properties. Please note that both the costs and final.

If you have a small home or want to power mobile vehicles like caravans and campervans, the good news is that there are many smaller-sized systems available. This includes small solar panels, as well as battery storage.

Residential solar panels consist of around 60 solar cells and are roughly 5.5 feet long and 3 feet wide. Solar panels usually weigh about 40 to 50 pounds. What is a typical solar panel size?

Most residential solar panels' standard size range from 65 by 39 inches, or 17.3 square feet, to 78 inches by 39 inches, or 20.5 square feet. Average solar panel size — large or small solar system size — is available to produce different levels of energy output.

What are the dimensions of a residential solar panel in the UK?

The typical dimensions of a residential solar panel in the UK is 189cm x 100cm x 3.99cm (length, width and height) Solar panel weight is a crucial factor to consider when planning a rooftop solar installation. The weight of the panels, along with the mounting equipment, adds a significant load to your roof structure.

What is a photovoltaic (PV) solar panel?

This solar panel is a photovoltaic (PV) panel that offers several advantages



over the standard solar panel size, making them a good alternative. Some of the benefits of this solar panel type include: Sleek weight and flexibility – because of its weight, this solar panel is easier to install in different locations.

What size solar panel should I buy in the UK?

Nevertheless, the typical size of a residential solar panel in the UK is 250W to 450W. It's important to note that when considering solar panels for your home or business, it's recommended to focus primarily on the wattage or power output rather than the physical dimensions.

Do solar panels come in different sizes?

Solar panels come in different sizes, ranging from small ones used in portable devices to large ones used in commercial installations. The size of a solar panel is measured in watts, which indicates the amount of power it can generate.

How do I choose the right solar panel size?

The size of a solar panel should be chosen based on factors such as available space, energy needs, and budget. Solar panels can be combined to create larger systems, and the size of the system will depend on the energy needs of the user. Choosing the right size of the solar panel is important for maximizing energy production and cost savings.



Dimensions of large photovoltaic panels



Solar Panel Sizes UK

A typical home solar panel system in the UK would consist of 6-20 solar panels, which would generate an average of 3kW to 6kW of power. A typical 10 panel system would take up about 16m². For commercial systems, the number of ...

Guide to Solar Panel Sizes & Dimensions (November ...

Some common solar panel system sizes include a 3kW solar panel system, a 4 kilowatt solar panel system and a 5kW solar panels. For instance, a typical 2kW solar panel system suited for 1-3 people will need ...



Solar Panel Sizes And Wattage , Sizing, Dimensions & Weight

The size or dimensions of the solar panels, measured in height by width, will determine the number of solar panels that will fit on your roof and the wattage of solar panels ...



[Solar Panel Size: Dimensions Guide](#)

Solar Panel Size In Dimensions. The dimensions of a solar panel are its physical size in terms of length, width, and thickness, including the frame. You need to know whether ...



How Many Solar Panels Do I Need? , Try Our ...

Over five people: 16+ solar panels; House size still plays a large role in determining how many solar panels you need, since a large house will still use more electricity than a small house, even if there aren't many ...



Solar panel sizes: Find solar panels in the right size and wattage ...

Solar panel size is one of the secrets to getting the best return on your solar investment. And with fewer gaps between panels, an array of large panels is easier to keep clean. But as well ...



Solar panel sizes and dimensions explained , FMB

Based on FMB's best solar panels, the average solar panel dimensions in the UK are: Solar panel size: 1,945.5mm (length) x 1,130.1mm (width) x 31.25mm (height) ...





Solar Panel Sizes (Energy Use & Dimensions Guide)

Residential solar panels typically possess between 250W to 450W depending on how efficient they are in converting sunlight into energy and the solar panel sizes. Standard Solar Panel ...

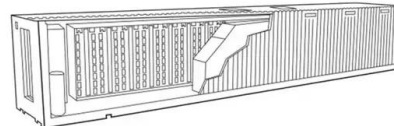


Solar Panel Size And Weight: A Comprehensive Guide

To select the right solar panel size, it is important to know the standard solar panel sizes available on the market. Every solar panel consists of solar cells, which are ...

[Complete guide to solar panel size](#)

Solar panel efficiency, output, a good warranty, and a trusted brand are more important than focusing on solar panel size. How to measure solar panel size Residential solar panels usually ...



Guide to Solar Panel Sizes & Dimensions (November ...)

Solar cell dimensions are typically around 189 x 100 x 3.99cm (6.2 x 3.28 x 0.13 feet), while solar panel dimensions are usually between 1.6m² to 2m² (17.22 to 21.53 square feet). The physical size of the solar panel is ...



What Size Solar Battery Do You Need? 2024 Guide

What size solar battery for solar panels? 4 kW solar system with a battery -- Homes with a 4 kilowatt peak (kWp) solar panel system will need a storage battery with a ...



Solar Panel Sizes & Dimensions In The UK (2024)

Here are the standard solar panel sizes and dimensions to give you a better idea: 60-cell panels: Approximately 1.65 meters (5.4 feet) by 990mm (3.25 feet) 72-cell panels: ...

How big are solar panels? Solar panel size and weight

Solar panels generate clean energy and significant savings, but they aren't a one-size-fits-all solution. The size and weight of solar panels vary depending on the make and ...



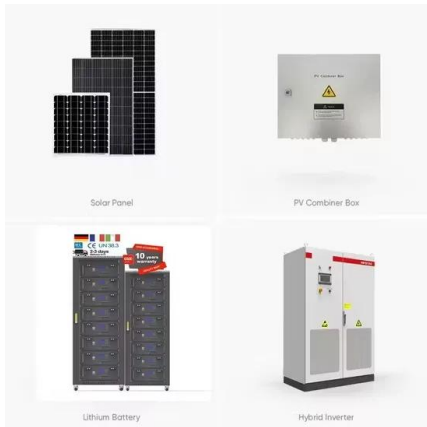
Solar Panel Size & Weight Guide [+ Charts] - Solartap

Solar panel dimensions depend on how many cells are in each panel, as cell size is pretty uniform across all brands of residential solar panels. Each cell is usually 156 ...



Solar Panel Sizes, Dimensions & Wattages: UK Guide ...

Solar panel size indicates the amount of energy that is produced by your system, while solar panel dimensions indicate the physical size of the solar panel. The average 350W solar panel has the dimensions of 190cm x ...



[How Many Solar Panels Do I Need in the UK?](#)

Solar panel system dimensions; System size
Number of solar panels: Household size Space required; 2kW-3kW: 4 to 8: Small; 1-2 bedrooms: 8m² to 16m²: 4kW-5kW: 8 to 13: Medium; 2-3 bedrooms: 16m² to 26m²: ...

How to Size a Solar System [Step-by-Step Guide]

Learn how to size a solar system for your home. Here's our step-by-step guide on sizing a solar system that meets your energy needs. If your solar panel's performance warranty ...



Solar Panels Size & Weight (Including Commercial Dimensions)

Using the average solar panel size of 6 feet by 3.25 feet, and assuming you leave minimal space between the panels, your rooftop solar system would measure roughly ...



How big is a solar panel? A guide to the different sizes and dimensions

For example, the equivalent of a 60 cell solar panel is a 120 half-cut cell solar panel. The equivalent of a 72 cell solar panel is a 144 half-cut cell solar panel. 120 half-cut cell ...



Solar Panel Sizes & Dimensions (UK): Simply Explained

When considering solar panel dimensions, weight can vary based on their solar panel size and type. For residential installations in the UK, panels generally weigh between 18-21 kg each.

...

Solar Panel Sizes, Dimensions & Weight

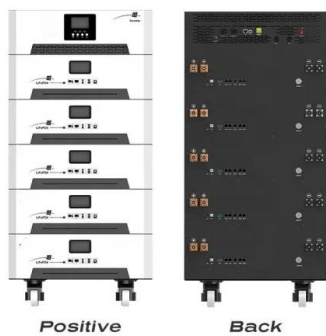
How solar panel size and dimensions affects the system design. When it comes to designing a optimal solar system the solar panel size plays a key role: The height and width of each panel will determine how many solar ...



Standard 20ft containers



Standard 40ft containers



Solar Photovoltaic Panel Sizes: A Complete Guide

Shorter lifespan - this solar panel size typically lasts for 10-20 years. Frequently Asked Questions. To understand solar panel size better, here's a list of FAQs about the best solar panels system. What Is the Typical Size/Dimensions of a

...



Solar Panel Dimensions and Sizes: Complete Guide

Solar Panel Dimensions of the Three Common Types of Panels. 60-Cell Solar Panels. The standard solar panel size, the 60-cell is structured as a 6x10 grid and measures 3.25 feet by ...



Ultimate Guide to Solar Panel Sizes, Dimensions & How Many Solar Panels

What Are the Standard Solar Panel Sizes? When it comes to standard solar panel sizes, like 300w or 500w, it is essential to determine the size of a solar panel system ...

Contact Us

For catalog requests, pricing, or partnerships, please visit:
<https://www.vdbconstruction.co.za>