

Discovery of the planets





Overview

The timeline of discovery of Solar System planets and their natural satellites charts the progress of the discovery of new bodies over history. Each object is listed in chronological order of its discovery (multiple dates occur when the moments of imaging, observation, and publication differ), identified through its.

In the following tables, planetary satellites are indicated in bold type (e.g. Moon) while planets and dwarf planets, which directly circle the Sun, are in italic type (e.g. Earth). The Sun itself is indicated in roman type. The tables.

• • • • , .

The numbering of Titania and Oberon underwent some confusion, because in 1797, Herschel reported four more satellites of Uranus that.

• • • • .

□□□□□□□□□□“□□□□”□□□□□□□□□□□□□□□□□
□□□□□□□□□□□□□□□□□□□□□□□□□□□□□□□□□□ □
□□□—□□□□□□□□□□□□□□□□□□□□□□□□—□□□□□□□□□□.



Discovery of the planets



[When Was Each Planet Discovered?](#)

When Was Each Planet Discovered? Our solar system contains eight known planets, almost all of which are visible to the naked eye. The only planets that cannot be seen without a telescope are Uranus and Neptune, and ...

[5.2: Planets beyond the Solar System](#)

Since that initial planet discovery, the rate of progress has been breathtaking. Hundreds of giant planets have been discovered using the Doppler technique. Many of these giant planets are orbiting close to their stars--astronomers have ...



The Discovery of Pluto: The Dwarf Planet's Tale

The discovery of Pluto started with the search for a mysterious Planet X. Percival Lowell, an American astronomer, initiated the search for a planet beyond Neptune in the early 20th century. Clyde Tombaugh, an assistant at the Lowell Observatory, discovered Pluto in 1930 based on predictions by Lowell and other astronomers.

Cosmic Milestone: NASA Confirms 5,000 Exoplanets

Astronomers have now confirmed more than 5,000 exoplanets - planets beyond our solar system. But it's just a fraction of the likely hundreds of billions in our Milky Way galaxy. The



cones of exoplanet discovery radiate out ...

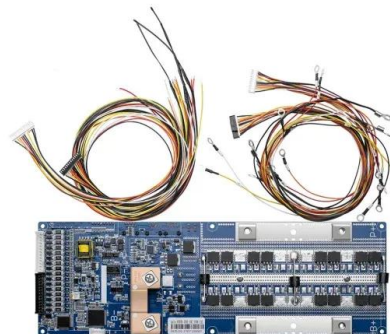


Solar System

At that time, Uranus, Neptune, nor the asteroid belts have been discovered yet. Orbits of planets are drawn to scale, but the orbits of moons and the size of bodies are not. The term "Solar System" entered the English language by ...

Discovery of Small Ultra-short-period Planets Orbiting KG Dwarfs ...

View a PDF of the paper titled Discovery of Small Ultra-short-period Planets Orbiting KG Dwarfs in Kepler Survey Using GPU Phase Folding and Deep Learning Detection System, by Kaitlyn Wang and 5 other authors [View PDF HTML](#) (experimental) Abstract: Of over 5,000 exoplanets identified so far, only a few hundred possess sub-Earth radii.



The Planets In Order , From The Sun, Information, History

Among the dwarf planets, Pluto was listed as a planet the longest. This all changed in 2006 when the Astronomical Union - IAU - finally decided on the definition of a planet. According to the definition, a planet is a celestial body that is in orbit around the Sun, has enough mass to assume hydrostatic equilibrium - resulting in a round shape, and has cleared ...



Timeline of discovery of Solar System planets and their moons

4 ???· The timeline of discovery of Solar System planets and their natural satellites charts the progress of the discovery of new bodies over history. Each object is in the following tables, planetary satellites are indicated in bold type (e.g. Moon) while planets and dwarf planets, which directly circle the Sun, are in italic type (e.g. Earth).



The Science: Orbital Mechanics

This discovery (which became Kepler's second law of orbital motion) led to the realization of what became Kepler's first law: that the planets move in an ellipse (a squashed circle) with the Sun at one focus point, offset from the center.

Kepler's legacy: discoveries and more

Kepler leaves a legacy of more than 2,600 planet discoveries from outside our solar system, many of which could be promising places for life. During 9.6 years in orbit, Kepler led to the discovery of more than 2,600 planets by observing ...



Solar system , Definition, Planets, Diagram, Videos, & Facts

4 ???· Solar system, assemblage consisting of the Sun and those bodies orbiting it: 8 planets with about 210 known planetary satellites; many asteroids, some with their own satellites; comets and other icy bodies; and vast reaches of highly tenuous gas and dust known as the interplanetary medium.



Solar system planets, order and formation -- a guide

Explore the eight (or nine) planets of the solar system in order from nearest to the sun and discover the many wonders of our solar system along the way. The Oort Cloud is considered to mark the



Uranus: the first planet discovered with a telescope

The discovery of Uranus, the seventh planet from the Sun, took place in 1781, and expanded the known limits of our solar system. William Herschel, astronomer and musician, is the man credited with this discovery. He was assisted by his sister, Caroline Herschel

When Were the Planets Discovered in Our Solar ...

The first 5 planets of our sensational solar system are very hard to date, being visible to the naked eye meant they were all identified long ago. Of course, it does depend on their distance and whether you count actual ...





The Nine Planets of The Solar System , Eight Planets Without

The Nine Planets is an encyclopedic overview with facts and information about mythology and current scientific knowledge of the planets, moons, and other objects in our solar system and beyond. Eris is the same size as Pluto, but three times further from the



Galileo's Observations of the Moon, Jupiter, Venus ...

When Galileo pointed his telescope at Jupiter, the largest planet in our solar system, he made a startling discovery. The planet had four "stars" surrounding it. Within days, Galileo figured out that these "stars" were actually ...



Planets in Order From the Sun , Pictures, Facts, and

Eris, which is larger than Pluto, was thought to be the tenth planet after its discovery until the IAU revisited their definition of a planet removing Pluto as a planet and classifying both Pluto and Eris as dwarf planets. Diameter: 2,326 km (1,445 mi) Distance from



Galileo's Observations of the Moon, Jupiter, Venus and the Sun

When Galileo pointed his telescope at Jupiter, the largest planet in our solar system, he made a startling discovery. The planet had four "stars" surrounding it. Within days, Galileo figured out that these "stars" were actually moons in orbit of Jupiter. His discovery





Discovery Alert: A 'Super-Earth' in the Habitable Zone

The discoverers: An international team of scientists led by Georgina Dransfield of the University of Birmingham, United Kingdom, published a paper in January 2024 on their discovery, "A 1.55 R ? habitable-zone planet hosted by TOI-715, an M4 star near the ecliptic South Pole," in the journal, "Monthly Notices of the Royal Astronomical Society."



History of planet hunting - timeline -- Science Learning Hub

Since finding all the planets in our Solar System, the search was on for planets around other stars (extrasolar planets). As methods and technology improve, more extrasolar planets are found. Below are some highlights in the history of these discoveries. 1781



Planetary Discovery Circumstances

Planetary Discovery Circumstances. Herschel's 40-foot telescope from 1789. Most of the planets (including the Earth's moon) have been known to mankind since ancient times. The planets ...

NASA's James Webb telescope discovers its first Earth-sized exoplanet

The James Webb Space Telescope has discovered its first new exoplanet, an Earth-sized rocky planet called LHS 475 b. Located just 41 light-years away, the planet orbits very





Exoplanets

Overview Most of the exoplanets discovered so far are in a relatively small region of our galaxy, the Milky Way. ("Small" meaning within thousands of light-years of our solar system; one light-year equals 5.88 trillion miles, or 9.46 trillion kilometers.) Even the closest known exoplanet to Earth, Proxima Centauri b, is still about 4 light-years [...]

In Depth , Our Solar System - NASA Solar System Exploration

So far, we have discovered thousands of planetary systems orbiting other stars in the Milky Way, with more planets being found. Most of the hundreds of billions of stars in our galaxy are thought to have planets of their own, and the Milky Way is but ...



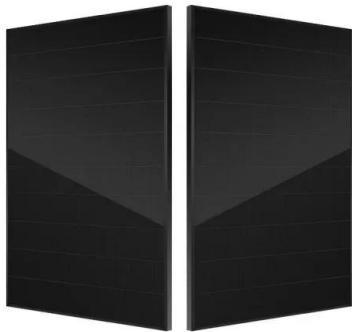
NASA Planet Hunter Finds its 1st Earth-size Habitable-

NASA's Transiting Exoplanet Survey Satellite (TESS) has discovered its first Earth-size planet in its star's habitable zone, the range of distances where NASA's Transiting Exoplanet Survey Satellite (TESS) has discovered its first Earth-size planet in its star's habitable zone, the range of distances where conditions may be just right to allow the presence of liquid ...

About the Planets

Our solar system has eight planets, and five dwarf planets - all located in an outer spiral arm of the Milky Way galaxy called the Orion innovates for the benefit of humanity, and inspires the world through discovery. About NASA's Mission ...





[Discovery Alert: With Six New Worlds, 5500](#)

With the discovery of six new exoplanets, scientists have tipped the scales and surpassed 5,500 exoplanets found (there are now 5,502 known exoplanets, to be exact). Just about 31 years ago, in 1992, the first exoplanets were confirmed when scientists detected twin planets Poltergeist and Phobos orbiting the pulsar PSR B1257+12.

Discovery and exploration of the Solar System

its discovery was therefore coincidental. Like Ceres, it was initially considered to be a planet, but after the discovery of many other similarly sized objects in its vicinity it was reclassified in 2006 as a dwarf planet by the IAU. [22] More technical In 1668



21.4: Evidence That Planets Form around Other Stars

Observational evidence shows that most protostars are surrounded by disks with large-enough diameters and enough mass (as much as 10% that of the Sun) to form planets. After a few million years, the ... Disks around Protostars: Planetary Systems in Formation

The discovery of a new Earth-like planet could shed further light ...

In an exciting breakthrough for astronomy and the search for extraterrestrial life, a team of international scientists has announced the discovery of Gliese 12 b, a temperate, Earth-sized





When were each of the planets first discovered and who did it?

Question: When were each of the planets first discovered and who did it? Answer: Only 3 of the 9 planets in our solar system have official "discoverers" and "times of discovery". The reason is ...

Contact Us

For catalog requests, pricing, or partnerships, please visit:
<https://www.vdbconstruction.co.za>