

Do photovoltaic panels have the same voltage when connected in parallel

Sample Order
UL/KC/CB/UN38.3/UL





Overview

When connecting solar panels together in parallel, the total voltage output remains the same as it would for a single panel, but the output current becomes the sum of the amperage of each panel. What happens if you connect solar panels in parallel?

When you connect solar panels in parallel, the total output voltage of the solar array is the same as the voltage of a single panel, while the total output current is a sum of the currents passing through each panel. The latter is only valid provided that the panels connected are of the same type and power rating.

Do solar panels wired in parallel increase volts?

Solar panels wired in series increase the volts of the solar array, but the amps remain the same. On the other hand, solar panels wired in parallel increase the amps while the volts remain the same. Connecting solar panels in parallel allows the system to generate more electricity without exceeding the voltage limits of the inverter.

What is the difference between connecting solar panels in series vs parallel?

Connecting your solar panel in series vs parallel affects current flow and is dictated by your installation's setup. Warning: Science below! While we're not going to get too deep into the details, the difference between connecting solar panels in series vs in parallel is an intermediate level solar discussion.

Do all solar panels have the same voltage rating?

All solar cells in a series-wired solar array must have the same current (amperage) rating. Although the voltages of the panels will add up, the current output will be equivalent to that of the panel with the lowest rating in the series. All solar cells in a parallel solar array should have the same voltage rating.

Is parallel wiring a good idea for solar panels?



Parallel wiring increases the sum output amperage of a solar panel array while keeping the voltage the same. The choice you make can have a significant impact on your system's overall performance. This article will examine the pros and cons of series and parallel connections between solar panels of the same rated power and model.

What is the difference between voltage and current in solar panels?

The difference between these two types of configurations is the total Voltage (Volts) and the total Current (Amps) of the solar array. When you wire solar panels in series, you raise the Voltage of the system, while the Current stays the same. Voltage: Total Voltage (Volts) = Voltage 1 + Voltage 2 + Voltage 3 + Voltage 4



Do photovoltaic panels have the same voltage when connected in p



Wiring Solar Panels in Series vs Parallel: Which Is Better?

Unlike connecting in series, connecting in parallel allows the voltage to stay the same, but the current adds up. In fact, it's the exact opposite of connecting in series! Using our ...

Solar panel strings: Parallel & Series explained

You repeat that for as many panels as you have and then connect the strings together in parallel. For example, if you had 6 panels with $V_{mpp}=22.5$, $I_{mpp}=5.75$ and an ...



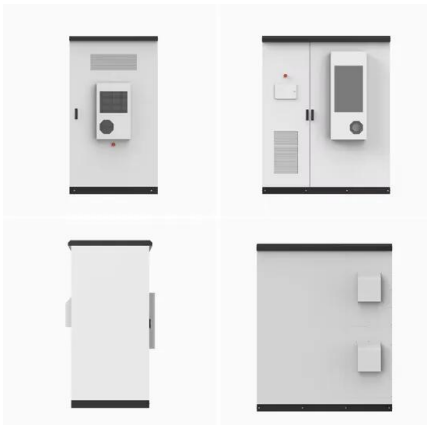
Understanding the series and parallel connection of solar panels

The resulting effect is to produce a solar panel system with an increased amperage rating (the sum of the individual amperages in the parallel array) while the total ...



Series, Parallel & Series-Parallel Connection of PV Panels

Solar cells can also be arranged in parallel, where each solar panel is connected to every other panel in the circuit. Unlike connecting in series, connecting in parallel allows the voltage to stay the same, but the current adds ...



How to Wire Two or More Solar Panels in Parallel

If we have two solar panels with the same voltage but different wattage, there is no problem; they can be wired in parallel. On the other hand, if our two solar panels have both different wattage ...

Should You Wire Your Solar Panels In Series Or Parallel?

The actual output voltage of your solar pv modules will be higher than the nominal voltage. 12V panels produce up to 18V-24V, depending on the panel. The figure out ...



Mixing Different Wattage Solar Panels: Beneficial or Not?

Have you ever thought about buying a 200-watt solar panel and combining it with your 100-watt solar panel currently installed? If so, you are allowed to mix solar panels with ...





Choosing Between Series and Parallel Connections for Solar Panels

Discover the best way to harness solar energy for your needs with our guide on solar panel series and parallel connection setups. Each panel raises the total voltage ...



Connecting Solar Panels in Series Vs Parallel

Connecting PV panels in series increases the voltage but amps remain the same, but in parallel connection, current and power output increase. For connecting panels in either series or parallel, we need to start with wiring. ...

The Difference Between Wiring Solar Panels in Series or Parallel

If you use a PWM controller, the battery will pull the total panel array voltage down to match it, and you will lose a lot of power. Parallel Solar Panel Wiring Voltage and ...



Everything You Need To Know About Solar Panel ...

For example, if you have a solar panel with a Voc of 20V and a Temperature Coefficient of 0.33%/°C, for every degree Celsius drop in panel temperature, the voltage will rise by 0.66V. The calculation looks like this: $20V \times 0.0033 = 0.66V$



Can You Mix Solar Panels? [Can You Mix and Match Them?]

These combiner boxes are ideal for when you want to add an extra solar panel to an existing PV system - for example, if your system is rated for 12 volts and 30 amps, but ...



Series, Parallel & Series-Parallel Connection of PV ...

Step 1: Note the voltage requirement of the PV array Since we have to connect N-number of modules in series we must know the required voltage from the PV array. PV array open-circuit voltage V_{OCA} ; PV array voltage at maximum ...

Connecting Solar Panels in Series or in Parallel?

Series wiring increases the sum output voltage of a solar panel array but keeps amperage the same. Parallel wiring increases the sum output amperage of a solar panel array ...



Ultimate Guide to Solar Panels in Series vs. Parallel

When connected in parallel, four 100-watt panels with a combined maximum voltage of 17.9 volts could generate 17.9 volts. The same panels could generate 71.6 volts when connected in series. How to Wire Solar ...





[Bypass Diodes in Solar Panels](#)

The equivalent circuit of a PV, shown on the left, is that of a battery with a series internal resistance, $R_{INTERNAL}$, similar to any other conventional battery. However, due to variations ...



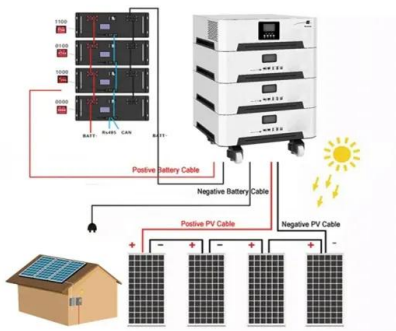
[Solar Panel Series vs Parallel , SolarLab](#)

To learn more about solar panel series vs parallel, and which one is best for you, continue reading! If we connected 3 panels in series with a voltage of 6V and a current ...



Solar Panel Series Vs Parallel: Wiring, Differences, And ...

Whether you connect solar panels in series or in parallel, the total power output (in Watts) is the sum of the power generated by each solar panel. The difference between these two types of configurations is the total ...



Connecting Solar Panels in Series or in Parallel: Which ...

Yes, you can wire solar panels in series or parallel. In some cases, you can even wire solar panels in both series and parallel simultaneously. For example, if you have two panels with 12V each, wire them in series to ...



Solar String Expansion. Panels Connection Parallel vs Series

Connecting Different Spec Solar Panels in Parallel. Mixing panels with different currents but equal voltages can work well when wiring them in parallel. When connected in ...



How to Connect Solar Panels in Parallel: A Step-by ...

Identifying Compatible Solar Panel Ratings for Parallel Connection. Matching solar panels correctly in a parallel setup is critical. It avoids inefficiencies and ensures all panels add power effectively. When two solar ...



Guide to Solar Panel Parallel vs Series Wiring

Electrical current, voltage, and power in solar panel systems 101. Whether your solar panels are connected in series or in parallel, there are three fundamental concepts to understand about electricity before you get ...



How to Wire Solar Panels in Series & Parallel

If wired in series, the 2-panel string would have a voltage of 24 volts and a current of 8 amps. If wired in parallel, the 2-panel string would have a voltage of 12 volts and a current of 16 amps. Regardless of whether you wire ...





Connecting Solar Panels in Series or in Parallel?

Parallel wiring increases the sum output amperage of a solar panel array while maintaining the same voltage. The choice you make can have a significant impact on your system's overall performance. For the purposes of ...



Do Solar Panels Need Blocking or Bypass Diodes?

When the sun is out, your solar panels will have some voltage because of the photovoltaic effect. If the voltage of the two solar panels combined is greater than your battery's voltage, it will get charged. It doesn't allow the ...



Connecting Solar Panels in Series or in Parallel: Which Is

3A x 3 PV panels = 9A total output. The voltage stays the -- the DC output remains 6V no matter how many solar panels you connect. If you have a 10-panel array ...



[How to Connect 3 Solar Panels in Parallel](#)

Do Solar Panels in Parallel Have to Be the Same Wattage? Yes, to connect solar panels in a parallel connection they need to be of the same wattage. However, in such a ...





Connecting Multiple Solar Panels - Series vs. Parallel

When solar panels are connected in parallel (known as arrays) they all share the same voltage, and the current that each one of them provides is summed up. The main advantage of this configuration is reliability.



Charging LiFePO4 Batteries In Parallel And Series Guide

For instance, if you connect two 12V lithium batteries in series, you will get a total voltage of 24V. Can i connect 12v lithium in parallel? Yes, you can connect 12V lithium ...

Connecting Solar Panels Together for Increased Power

I currently have 4 200 watt rich solar panels max power voltage is 37.6. im going to add two more of the same panels. the charge controller is an ampinvt 60 amp. connected to 2 200ah 12v ...



Solar panel wiring basics: How to wire solar panels

Discover all the solar panel wiring basics from terms, to sequence of operations, you'll discover everything you need to know to wire solar panels. the voltage of the circuit remains the same (equivalent to the voltage of each panel).
...



Connecting Solar Panels in Series Vs Parallel

Note that if you have PV panels with different wattages and voltages then a parallel connection cannot happen. The panel with the least voltage behaves like drag and ...



Contact Us

For catalog requests, pricing, or partnerships, please visit:
<https://www.vdbconstruction.co.za>