

Does the photovoltaic module need to be lifted when it is reworked





Overview

Can you walk on a LONGi Solar PV module?

DO NOT stand or walk on PV modules. Prior to beginning installation, review the Installation Manual for LONGi Solar PV Modules. Do not carry a module alone; always use two people to lift and carry. Do not drill holes in the frame of the module. In addition to invalidating the product warranty, this will also reduce.

Can solar PV modules be installed in sunlight?

Use of insulated tools and gloves is recommended while working with modules in sunlight. No metallic contacts should be on the human body. The installation of solar PV modules should only be performed by a qualified licensed professional, including, without limitation, licensed contractors and licensed electricians.

Do you need a professional to install a PV module?

The installation and handling of PV modules require professional skills and should only be performed by qualified professionals. The installers must inform end-users (consumers) the aforesaid information accordingly. The word "module" or "PV module" used in this manual refers to one or more CS-series solar modules.

Can a PV module be switched off?

PV modules produce electricity when exposed to daylight and individual modules cannot be switched off. Hence, unlike most other electrical installation work, the electrical installation of a PV system typically involves working on a live system. See requirements of Regulation 14 of Electricity at Work Regulations 1989.

How to pack solar PV modules?

Inside the box each module is placed in vertically. Put the module into the



carton from one side with protector on four corners. Citizen Solar recommends that two people should load into and remove the modules from the pack carton for solar PV modules.

Do you need to repower a PV system?

Abstract: Throughout a PV system lifetime, it is often necessary to replace modules that are damaged, underperforming, or deemed unsafe to operate. Little industry guidance is available on how to repower PV plants to optimize performance.



Does the photovoltaic module need to be lifted when it is reworked



Photovoltaic Module

Due to the risk of electrical shock, do not perform any work if the terminals of the PV module are wet. Use insulated tools and do not use wet tools. When installing PV modules, do not drop ...

Calculation & Design of Solar Photovoltaic Modules & Array

The PV modules are designed to provide the voltages in the multiple of 12 V battery level that is 12 V, 24 V, 36 V, 48 V, and so on. To charge a 12 V battery through a PV module we need a ...

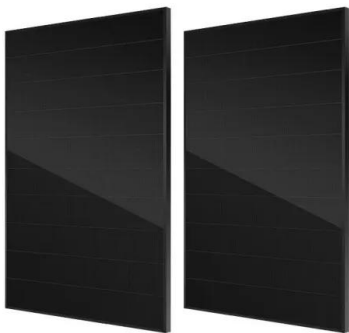


Material Recovery from End-of-Life Solar Photovoltaic Module ...

Solar photovoltaic module (SPV) energy has the potential to not only satisfy the rising global need for power but also to do it without the enormous environmental costs ...

Photovoltaic Module

Do not work in rain, snow or windy conditions. Due to the risk of electrical shock, do not perform any work if the terminals of the PV module are wet. Use insulated tools and do not use wet ...

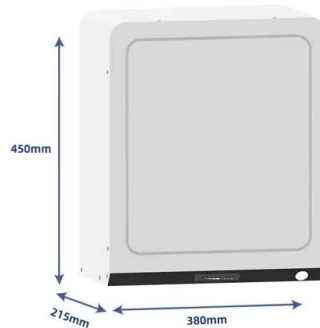


PV Array Voltage and Size: What You Need to Know

PV voltage, or photovoltaic voltage, is the energy produced by a single PV cell. Each PV cell creates open-circuit voltage, typically referred to as VOC. At standard testing ...

PV Module Unpacking, Handling and Storing Guide

Prior to beginning installation, review the Installation Manual for LONGi Solar PV Modules. Do not carry a module alone; always use two people to lift and carry. Do not drill holes in the frame of ...



How do solar cells work? Photovoltaic cells explained

A solar module comprises six components, but arguably the most important one is the photovoltaic cell, which generates electricity. The conversion of sunlight, made up of ...



Lightweight module installation manual Catalogue

When handling or installing the Module, do not support the Module through its back plate, avoid carrying the Module on the operator's back, and avoid use rope to carrying the Module. Do not ...



Introduction to Photovoltaic Solar Energy , SpringerLink

The photovoltaic cell material must need to work for a spectral range specifying the solar spectrum. The solar spectrum ranges from the infrared region to the ultraviolet region ...

STORAGE AND UNPACKING INSTRUCTION OF PHOTOVOLTAIC ...

lift the modules at an appropriate height (the tilt angle required to lift the modules

Our Lifepo4 batteries can beconnected in parallels and in series for larger capacity and voltage.



50KW modular power converter



Flexible Configuration

- Modular Design, Expandable as Required
- Small/light, Vibration Resistant
- Installed in Parallel for Expansion

Powerful Function

- Support PV/FSS
- Grid Support, Equipped with SVG Technology
- On/Off and Off/On Operation

Reliable Protection

- Overload IPES Design
- Sufficient Protection Functions Equipped

Photovoltaic Module Laminators: Everything You ...

A photovoltaic module laminator is a machine that is used to make solar panels. This machine uses heat and pressure to stick different layers of the photovoltaic module together. The laminator makes sure that the solar ...



INSTALLATION MANUAL FOR JA SOLAR PHOTOVOLTAIC MODULES

Do not lift the Modules by grasping the Modules' junction box or electrical leads in any condition. Do not stand or step on the Modules. Do not drop the Modules on another Module. Do not ...

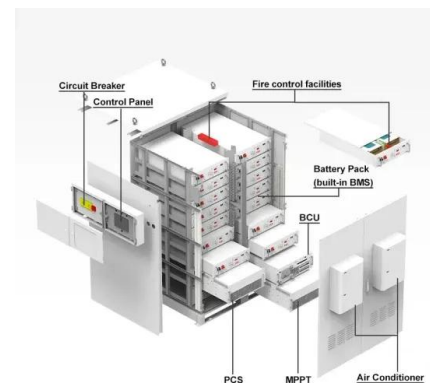


A Review of Dust Deposition Mechanism and Self-Cleaning ...

This paper reviews the dust deposition mechanism on photovoltaic modules, classifies the very recent dust removal methods with a critical review, especially focusing on ...

Solar panel inclination angle, location and orientation

Any implementation of a sustainable photovoltaic solar energy system implies the optimization of the resources to be used. Therefore, it is the basis for the design and ...



Photovoltaic Module

Do not install the PV module in a location where it would be immersed in water or continually exposed to water from a sprinkler or fountain etc. 2.2.3 Tilt Angle Selection The tilt angle of the ...



Photovoltaic (PV) Module and Its Panel and Array

The photo-voltaic (PV) modules are available in different size and shape depending on the required electrical output power. In Fig. 4.1a thirty-six (36) c-Si base solar ...



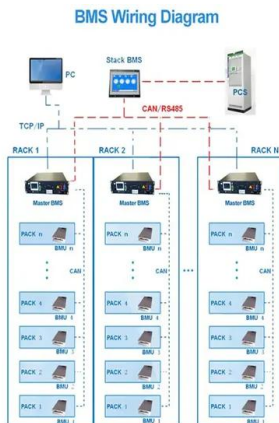
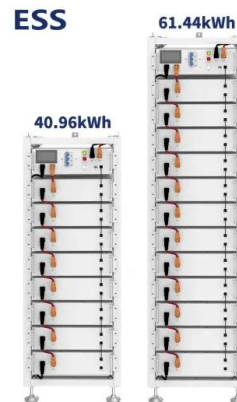
[Guidance on PV Module Replacement](#)

Throughout a PV system lifetime, it is often necessary to replace modules that are damaged, underperforming, or deemed unsafe to operate. Little industry guidance is available on how to ...



Photovoltaic Module

photovoltaic modules especially during the winter months when the arc of the sun is lowest over the horizon. Shading causes loss of output, even though the factory fitted bypass diodes of the ...



Global Installation Guide for Suntech Power Standard Photovoltaic Module

Do not permit constant dew on any part of backsheet of the module. Handling safety Do not lift the module by holding the module's junction box or electrical leads. Do not place any heavy or ...



Photovoltaic Module Grounding: Issues and Recommendations

-Not allowed for PV module connection evaluation per UL CRD -Briefly considered revising to qualify PV grounding components oUL 2703:Rack Mounting Systems and Clamping Devices ...



A Full Guide to Photovoltaic Array Design and ...

5. How do you calculate the size of a photovoltaic array needed for a specific electrical load? Calculate the photovoltaic array size by estimating the daily energy demand, factoring system efficiency, and using location ...

Ultimate Guide to Photovoltaic Installation: Step-by-Step ...

The PV system can be integrated directly into the roof cladding through in-roof mounting. The PV modules replace the roof covering in this process. PV modules are mounted on fastening rails, ...



The Ultimate Guide to Photovoltaic Modules , Solar Labs

Fortunately, with current developments in loss management and encapsulation techniques, manufacturers can give a module lifetime guarantee for more than 20 years where ...



Photovoltaics in Buildings

The supply from PV modules cannot be switched off, so special precautions should be made to ensure that live parts are either not accessible or cannot be touched during installation, use ...



Solar PV Module Handling, Storage, Installation

Before lifting, the length of the sling should be evenly distributed on both sides to avoid the case body tilting to one side during lifting, which causes the sling to be too tight and the assembly to ...

Solar PV module installation manual

+ In no case shall the module be lifted by holding on to the junction box or wire; never stand or move on the module. + Never drop one module onto another. + In order to avoid breakage of ...



Applications



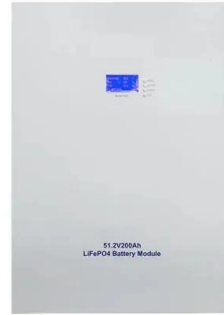
Solar Panel Angle: how to calculate solar panel tilt angle?

For that reason the ideal angle is never fixed. To get the most sun reaching the panel throughout the day, you need to determine what direction the panels should face and ...



Photovoltaic Module

Do not install the PV module in a location where it would be immersed in water or continually exposed to water from a sprinkler or fountain etc. 2.2.3 Tilt angle selection The tilt angle of the ...



Do solar panels need to be slanted at an angle or can they be

Discussion of solar photovoltaic systems, modules, the solar energy business, solar power production, utility-scale, commercial rooftop, residential, off-grid systems and more. Solar ...

How Does Solar Photovoltaic Work? A Complete ...

So whether you are a homeowner considering solar panels or simply curious, read on to discover everything you need to know about how solar PV works. To increase power output, cells are electrically connected to a photovoltaic ...



Contact Us

For catalog requests, pricing, or partnerships, please visit:
<https://www.vdbconstruction.co.za>