

# Eighty-meter wind blade power generation





## Overview

---

Wind turbines can rotate about either a horizontal or a vertical axis, the former being both older and more common. They can also include blades or be bladeless. Household-size vertical designs produce less power and are less common. Large three-bladed horizontal-axis wind turbines (HAWT) with the blades upwi.



## Eighty-meter wind blade power generation



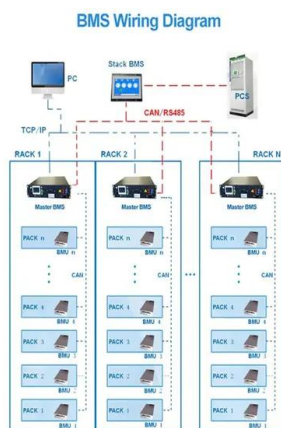
### 17.2: Wind-Turbine Power Generation

where  $R$  is the turbine-blade radius,  $M$  is incoming wind speed, and  $\rho$  is air density. Turbine efficiencies are  $E = 30\%$  to  $45\%$ . Faster winds and larger-radius turbines allow greater power ...

### Wind blades generate how much electricity per ...

Taking a 1500-kilowatt fan unit as an example, the wind blades are about 35 meters long (about 12 stories high). It takes about 4-5 seconds for the wind turbine to make one revolution (but at this time, the wind blade tip speed can ...

Sample Order  
UL/KC/CB/UN38.3/UL



### Answered: A wind turbine that is 80 meters tall... , bartleby

A wind turbine that is 80 meters tall with a blade length of 160 ft will be used to generate electricity in an off-grid farm. The average annual wind speed in the area is 50 ft/s. Calculate the power ...

### Power generation enhancement in a horizontal axis wind turbine blade

They showed that the split blade produced more power compared to the straight blade at lower wind speeds, while the tubercle blades had better power performance in severe ...



### GE Renewable Energy's LM Wind Power Produces ...

As the 44,444 th blade rolled out of our India plants in June this year, we are focused on making next generation wind turbine blades for a greener world." LM Wind Power's operations in India began in 1994 in Hoskote near ...

### Pioneering wooden turbine blade prototype installed ...

In an industry-first, German wooden wind turbine blade manufacturer Voodin Blade Technology has announced the installation of its prototype 19.3-meter wooden wind turbine blades. The blades, installed on an ...

50KW modular power converter



### Wind turbine

OverviewTypesHistoryWind power densityEfficiencyDesign and constructionTechnologyWind turbines on public display

Wind turbines can rotate about either a horizontal or a vertical axis, the former being both older and more common. They can also include blades or be bladeless. Household-size vertical designs produce less power and are less common. Large three-bladed horizontal-axis wind



turbines (HAWT) with the blades upwi...

## Fundamentals of Wind Turbines , Wind Systems Magazine

Among other factors, wind speed and rotor diameter are the two primary parameters (see Equations for wind turbines). Turbine power increases with the square of ...



## World's first wooden wind turbine blades installed

Three 19.3 meter laminated veneer lumber (LVL) blades under installation at a wind turbine in Breuna, Germany. According to Voodin Blade Technology, with its LVL blades, ...

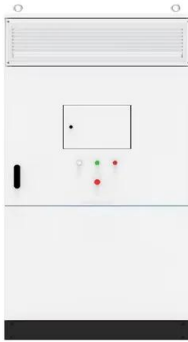
## New Blade Adapter Trailer Eases Transport of 80-Meter-Long Wind ...

Despite the impressive total vehicle length of 93 meters, the Blade Adapter is designed to be universally compatible with blades of up to 120 meters. 4. En route to the wind ...



## GE's LM Wind Power produces 50,000th wind turbine blade in India

LM Wind Power's operations in India began in 1994 with the production of the 13.4-meter blades in Hoskote, near Bangalore. Today, the length of the blades produced in ...



### What Are The Dimensions of a Wind Turbine?

For example, on a turbine with a 40-meter (131 ft.) blade, you can expect the swept meter to be about 5,000 square meters. At The same time, a wind turbine with a 28 ...



### **Power Generation by Vertical Axis Wind Turbine**

When the wind velocity change from 0-12 m/s, the experimental curve about output power vs. wind speed has the double features of both the drag-type vertical axis wind turbine and the lift-type

### **(PDF) Horizontal Axis Wind Turbines (HAWT) with Case Studies**

The first automatically operated wind turbine, built in Cleveland in 1887 by Charles F. Brush. It was 60 feet (18 m) tall, weighed 4 tons (3.6 metric tons) and powered a 12 ...





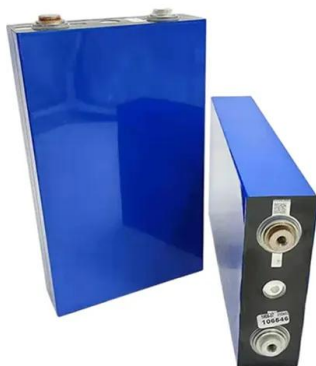
**Answered: uestion 1: A wind turbine that is 80... , bartleby**

uestion 1: A wind turbine that is 80 meters tall with a blade length of 160 ft will be used to generate electricity in an off-grid farm. The average annual wind speed in the area is 50 ft/s. 1. ...



**No blades! A pole-shaped wind turbine, Vortex Bladeless, ...**

As it operates on low to medium wind speeds, it is energy efficient, generating the same amount of energy at a cost 45% lower than that of a conventional 3-blade wind ...



**Synchronous Generator as a Wind Power Generator**

We know from our previous wind turbine design tutorial, that all wind turbines benefit from the rotor operating at its optimal tip speed ratio. But to obtain a TSR of between 6 to 8, the angular ...

**Wooden Wind Wonders: Turbine Blades Reduce ...**

Voodin Blade Technology aims to address the sustainability challenge by installing wooden wind turbine blades in Breuna, Germany. Voodin wind blade. Image used courtesy of Voodin Blade Technology . These 19.3 ...





### Wind Energy Factsheet

Wind speeds are slower close to the Earth's surface and faster at higher altitudes. Average hub height is 98m for U.S. onshore wind turbines 7, and 116.6m for global offshore turbines 8.; ...



### Wind turbine design

An example of a wind turbine, this 3 bladed turbine is the classic design of modern wind turbines  
Wind turbine components :  
1-Foundation, 2-Connection to the electric grid,  
3-Tower, 4-Access ...

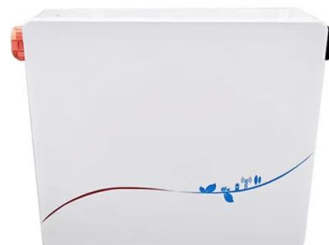


### A new milestone achieved in India with production ...

As the 44,444th blade rolled out of our India plants in June this year, we are focused on making next generation wind turbine blades for a greener world." LM Wind Power's operations in India began in 1994 in Hoskote near Bangalore ...

### Hybrid Model of Vertical Axis Wind Turbine

The wind turbine which is made is a type of helix savonius vertical turbine that has a large torque, can rotate with low wind speed with a turbine size 80 cm high, diameter 25 ...



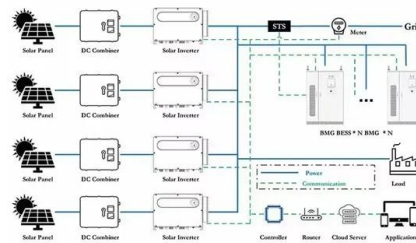


### Falcon 5 Blade Wind Turbine Generator

Falcon Wind Turbine Generator's custom made skewed stator reduces cogging and allows startup in lower wind speeds. Menu. Missouri Wind and Solar - Wind Power Experts since 2008 +1 ...

### **World's longest wind turbine blade successfully**

The world's longest wind turbine blade, at 88.4 meters, has successfully completed its first journey - perhaps as the largest cargo ever transported on danish roads. Travelers on Denmark's highway E45 witnessed an impressive ...



### Innovation is the root of the future

The largest of these has recently been extended, with a capacity to test blades as long as 80 meters. Besides, new blade types are also tested at This sophisticated tunnel allows our team ...

## **Contact Us**

For catalog requests, pricing, or partnerships, please visit:  
<https://www.vdbconstruction.co.za>