

Eltek compact dc power system





Overview

What is a compact DC power system?

Compact System DC Power Eltek's Compact DC Power System is an industry-leading system optimized for the demanding power needs of wireless communications and broadband access equipment. Requiring only 2RU (87.6mm) of rack height, the Compact DC Plant is the optimal flexible solution for a wide range of applications.

What is Eltek DC power supply system configuration?

3 About Power System Configuration 3. About Power System Configuration
The Eltek DC power supply system's functionality represents a vast set of functions, characteristics or capabilities implemented in the hardware and software of the controllers, control units and nodes connected to the system's CAN bus.

Why should you choose Eltek compact?

Plenty of power and embedded distribution makes the Compact system an ideal solution for powering customer premises based optical routers, multiplexers, and switches. Small size and low heat output ease the burden on outdoor cabinet deployments. Ask how Eltek Compact solutions are utilized for broadband upgrades to SLC96 and SLC5 cabinets.

What is a compact DC plant?

Requiring only 2RU (87.6mm) of rack height, the Compact DC Plant is the optimal flexible solution for a wide range of applications. Plenty of power and embedded distribution makes the Compact system an ideal solution for powering customer premises based optical routers, multiplexers, and switches.

Why should you choose Eltek Valere compact system?

A powerful remote management interface through Ethernet, SNMP, or Modem



can make any workforce more productive. Better Quality of Service: Up to 96% efficiency and Advanced Battery Management result in reliable, trouble-free networks. Eltek Valere Compact System Technical Data:.

Does Eltek Valere have a lvbd?

Eltek Valere Compact System Technical Data: Input: Battery Distribution: Breaker Positions up to: 2 Breaker rating up to: 100 A LVBD: Yes Available Ports: Ethernet; RS-282; RS-485 Dimensions: 19" x 3.45" x 12 " Weight: 7 lbs Alpine Power Systems is a value-added reseller of Eltek products.



Eltek compact dc power system



[DC/DC Converter Power System Flatpack2 USA](#)

The Flatpack2 DC/DC Converter System is a High Efficiency power solution with an optimal footprint where space is limited - both in typical racks and some cabinet installations. The Flatpack2 DC/DC system delivers DC power solutions to telecommunications infrastructures where dual voltage 24/48V or 48/24V are required to power new and legacy equipment from a ...

Flatpack S 48V 1U

Compact HE 1U power systems Request a quote Contact us Overview Compact HE 1U power systems Increasing network speed demands flexible and expandable DC power solutions. Due to its small size, high efficiency, reliability and wide range of The



Integrated Power System

A true plug-and-play system, the Integrated power system reduces both time-to-install and overall costs. Integrated Power System The Integrated DC Power System provides an industry-leading DC power system optimized for the demanding power needs of

[Eltek Valere Compact System](#)

Eltek's Compact DC Power System is an industry-leading system optimized for the demanding power needs of wireless communications and broadband access equipment. Requiring only



2RU (87.6mm) of rack height, the Compact DC Plant is the optimal



[Compact K and P Shelves Manual \(B](#)

Installation Manual Compact "K" and "P" Shelves ~ Doc. No. 2070149, Issue 10.1, December 2011
7 1. Overview The Compact K-shelf and P-shelf systems are 48V DC power systems designed for standard 19" telecommunications racks and accommodate up

Eltek Flatpack S 1U

The Eltek Flatpack S 1U system is an optimal footprint for applications where space is limited - both in racks and various cabinet installations. The Flatpack S 1U is a one rack-unit high system that delivers 48V DC power to telecom infrastructure. The compact



[Eltek EcoTower DC Power System](#)

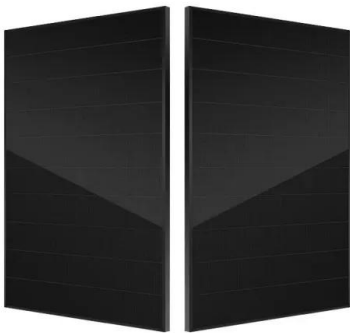
The Eltek EcoTower DC Power System delivers up to 2400A and can be equipped with as many as four different DC distribution panels in a single cabinet. Skip to content 1.800.876.9373





LP System

LP Power Enclosure Integrated distribution with 8 GMT fuse positions and system status LED indicators Up to two rectifier positions for a redundant power system, with non-redundant configuration option Battery thermal compensation Four relay alarm contacts



Compact C Shelf Manual (B)

Installation Manual Compact C-Shelf System ~Doc. No. 2067838, Issue 10, September 2012
1. Overview The Compact C-shelf is a DC power system has a mid-mount design for a standard 23" telecommunications racks. It can accommodate up to four Eltek V

[Integrated DC Power System](#)

Integrated DC Power System (DC Power Supply Systems - 200/250/400/500A) Doc 2052284 - rev6 KEY FEATURES 48V SOLUTIONS FLEXIBLE AC INPUT, DC DIST., AND BATTERY INTERFACES ADVANCED DIGITAL CONTROL AND DC Power



[Unity DC Power System with V-HE](#)

the art, efficient and compact DC power systems. Unity Power Systems deliver an industry leading power density, efficiency and superb reliability at lowest lifetime cost. BROADBAND AND NETWORK ACCESS Increasing network speed demands flexible V-HE



[Delta Eltek Modular HE System](#)

Eltek's modular DC power system, powered by the Flatpack2 line of power modules, delivers up to 1200A in a compact, rack-mount unit. Use of the highly-efficient and reliable Flatpack2 rectifier, a variety of configurable distribution layouts, and the advanced Smartpack2 controller make for optimal system design and cost-effective deployment.



[Flatpack S 1U power shelves](#)

Applications in these markets demand state of the art, reliable and safe DC power systems. Flatpack S delivers an industry leading power density in its segment, many safety functions, wide operating temperature range and superb reliability in its small 217mm deep housing.



Installation Manual

6 Installation Manual Compact G Shelf ~Doc. No. 2083752, Issue 7, May 2010 1. Overview The Compact G-shelf is a DC power system has a mid-mount design for a standard 19" telecommunications racks. It can accommodate up to four Eltek Valere V-series



48V 100Ah

Compact

Compact DC Power System The Eltek Valere Difference More room for revenue equipment Only 2RU of rack space, 35% less waste heat, and up to triple the output power Reduced installation and maintenance costs Highly powerful system controller A powerful





Compact

Compact and flexible Eltek Valere's Compact DC Power System is an industry-leading system optimized for the demanding power needs of wireless communications and broadband access equipment. Requiring only 2RU (87.6mm) of rack height, the Compact



Eltek's Compact DC Power System , Compact DC Plant , Optimal ...

The Compact DC Power System: Empower your network with efficiency, flexibility, and advanced technology. With a flexible shelf configuration supporting 3, 4, or 5 rectifiers, tailor the system ...

Datasheet Minipack system 4 and 6 positions DS

Compact and cost effective power supply system. The Minipack system has been specifically designed to meet any requirement in terms of power functionality and cost. Realization of ...



[Eltek , DC Power and Backup Power Solutions](#)

Eltek provides power and backup solutions such as Telecom, Power Utilities, Data Centers, Railway & Metro, Marine & Offshore and Rural Electrification. ISO Certifications Alpine Power Systems is proud to have three ISO Certifications that have been awarded to



Eltek

Welcome to Eltek! First-class power systems for industrial purposes - by the expert in power Power Utilities Railway & Metro Rural Electrification Products The SMART PDU I-type - compact 1U DC distribution with intelligent breakers With up to 21 intelligent



2052286 R4 DRAFT

Eltek Valere 1303 E. Arapaho Rd. Richardson, TX. 75081, USA Phone: +1 (469) 330-9100 Fax: +1 (469) 330-2955 Ordering Guide Compact DC Power System Doc. No. 2052286, Issue 4 Published 13-Oct-11 Compact Shelves "K" and "P" Shelf Letter KP

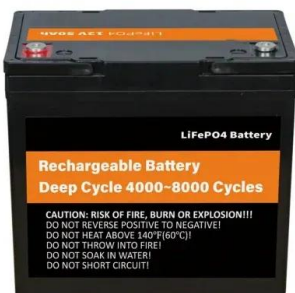
Eltek DC Power Systems

Eltek is a world leader in high-efficiency power electronics and energy conversion and Eltek DC Power Systems and Rectifiers perform well in a wide range of applications. Eltek has customers in more than 100 countries across a variety ...



[Eltek Valere Compact System](#)

Eltek's Compact DC Power System is an industry-leading system optimized for the demanding power needs of wireless communications and broadband access equipment. Requiring only 2RU (87.6mm) of rack height, the Compact DC ...





Compact DC Power System: Keeping Pace With the Times

The Compact DC Power System - or Compact System for short - was launched in 2004 and designed as a 2RU scalable and complete system for enterprise networks or remote terminals. ...



V Series Rectifier

Eltek V-series rectifiers provide industry-leading efficiency in a 2 RU footprint. Reliability, scalability, and hot-swap in Eltek's Compact and Integrated DC Power Systems. Eltek -- 2925 E Plano Pkwy, Plano, TX 75074, USA Phone: 469-330-9100 Doc 370096

Compact HE 2U power system

on the well proven Eltek technology, the Flatpack S family is the key for future needs. Flatpack S 2U (DC Power supply system 150A) Doc MFGS0502. xxx.DS3 - rev3 KEY FEATURES COMPLETE SYSTEM SMARTPACK S CONTROLLER 270 MM



Eltek Micropack System

The Eltek Micropack System has load ranges between 120W and 1000W, and in 12, 24 and 48V options, the system is perfect for many applications. Compact, full-featured DIN rail power system, the Eltek Micropack System is convection cooled and designed for



BC 2000

Eltek's Compact DC Power System is an industry-leading system optimized for the demanding power needs of wireless communications and broadband access equipment. Requiring only 2RU (87.6mm) of rack height, the Compact DC ...



Eltek Flatpack2 Wallbox

A compact wall mounted power supply system, the Eltek Flatpack2 Wallbox is designed for switchgear, telecom, emergency lightning and alarm systems. A compact wall mounted power supply system, the Eltek Flatpack2 Wallbox is built around the Flatpack2 rectifier and designed for applications such as switchgear, telecom, emergency lightning and alarm systems.

[Eltek Valere Compact System](#)

Eltek's Compact DC Power System is an industry-leading system optimized for the demanding power needs of wireless communications and broadband access equipment. JOIN OUR TEAM LOCATIONS CONTACT US 888-691-8100



Contact Us

For catalog requests, pricing, or partnerships, please visit:
<https://www.vdbconstruction.co.za>