

# Energy storage lithium battery terminal diagram





## Overview

---

What are the parameters of a battery energy storage system?

Several important parameters describe the behaviors of battery energy storage systems. Capacity [Ah]: The amount of electric charge the system can deliver to the connected load while maintaining acceptable voltage.

How a battery energy storage system works?

Battery energy storage systems (BESS). The operation mechanism is based on the movement of lithium-ions. Damping the variability of the renewable energy system and providing time shifting. Duration of PV integration: 15 minutes – 4 hours. storage). BESS can provide fast response (milliseconds) and emission-free operation.

Why are battery energy storage systems becoming a primary energy storage system?

As a result, battery energy storage systems (BESSs) are becoming a primary energy storage system. The high-performance demand on these BESS can have severe negative effects on their internal operations such as heating and catching on fire when operating in overcharge or undercharge states.

What is lithium ion battery storage?

Lithium-Ion Battery Storage for the Grid—A Review of Stationary Battery Storage System Design Tailored for Applications in Modern Power Grids, 2017. This type of secondary cell is widely used in vehicles and other applications requiring high values of load current.

What role do battery energy storage systems play in transforming energy systems?

Battery energy storage systems have a critical role in transforming energy systems that will be clean, efficient, and sustainable. May this handbook serve as a helpful reference for ADB operations and its developing member



countries as we collectively face the daunting task at hand.

How much energy does a lithium secondary battery store?

Lithium secondary batteries store 150–250 watt-hours per kilogram (kg) and can store 1.5–2 times more energy than Na-S batteries, two to three times more than redox flow batteries, and about five times more than lead storage batteries. Charge and discharge efficiency is a performance scale that can be used to assess battery efficiency.



## Energy storage lithium battery terminal diagram

---



### [HANDBOOK FOR ENERGY STORAGE SYSTEMS](#)

Battery Energy Storage Systems (BESS) 7 2.1 Introduction 8 2.2 Types of BESS 9 2.3 BESS Sub-Systems 10 3. BESS Regulatory Requirements 11 3.1 Fire Safety Certification 12 In ...

### Graphene oxide-lithium-ion batteries: inauguration of an era in energy ...

By 2025, energy storage installations will increase most rapidly in India and China, with the highest percentages occurring in Australia and Japan . Figure 5 shows a ...

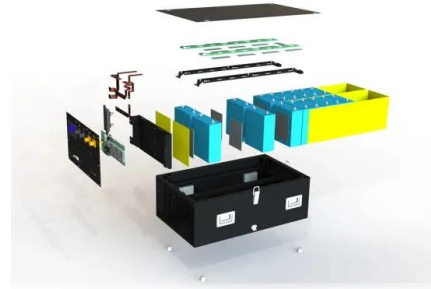


### Battery Energy Storage System Modelling in DigSILENT PowerFactory

Battery energy storage systems (BESS) are of a primary interest in terms of energy storage capabilities, but the potential of such systems can be expanded on the ...

### Modeling of Li-ion battery energy storage systems (BESSs) for ...

Energy storage systems (ESSs) are key to enable high integration levels of non-dispatchable resources in power systems. While there is no unique solution for storage system ...



Energy storage(KWH)

**102.4kWh**

Nominal voltage(Vdc)

**512V**

Outdoor All-in-one ESS cabinet



### How do lithium-ion batteries work?

How lithium-ion batteries work. Like any other battery, a rechargeable lithium-ion battery is made of one or more power-generating compartments called cells. Each cell has essentially three components: a ...

### **Fire Protection of Lithium-ion Battery Energy Storage Systems**

with a top positive terminal and bottom negative terminal is common in many consumer applications and is called a battery. 3.4 Energy Storage Systems Energy storage systems ...



### **Reducing power substation outages by using battery energy storage ...**

3.Lithium- ion (Li-ion) These batteries are composed from lithium metal or lithium compounds as an anode. They comprise of advantageous traits such as being ...





## Overview of Technical Specifications for Grid-Connected Microgrid

Figure showing: (a) Setup for data acquisition from a NMC battery, and plots for capacity (mAh) uncertainty based on  $\pm 14$  mV voltage accuracy in: (b) 1s1p configuration, and ...



## BATTERY ENERGY STORAGE SYSTEMS (BESS)

o Lithium-ion batteries are becoming less expensive, which reduces installation costs. o U.S. and EMEA policies are pushing for residential energy storage projects

## Li Ion Battery Diagram » Wiring Diagram

Here is a brief overview of what you should look for when examining a Li ion battery diagram: Identify the battery's terminal posts, cells, and connectors. El Prize For ...



## CHAPTER 3 LITHIUM-ION BATTERIES

Safety of Electrochemical Energy Storage Devices. Lithium-ion (Li-ion) batteries represent the leading electrochemical energy storage technology. At the end of 2018, the United States had ...



## Structure of the battery energy storage system.

A typical structure of the Battery Energy Storage System (BESS) is illustrated in Figure 2, which mainly includes battery cells, Battery Management System (BMS), Power Conversion System (PCS), etc



### [How does a lithium-Ion battery work?](#)

Parts of a lithium-ion battery (© 2019 Let's Talk Science based on an image by ser\_igor via iStockphoto).. Just like alkaline dry cell batteries, such as the ones used in clocks ...

### [Lithium-Ion Batteries and Graphite](#)

The basic anatomy of a lithium-ion battery is straightforward. The anode is usually made from graphite. The cathode (positive battery terminal) is often made from a metal oxide (e.g., lithium cobalt oxide, lithium iron phosphate, or lithium ...



### **Utility-scale battery energy storage system (BESS)**

utility-scale battery storage system with a typical storage capacity ranging from around a few megawatt-hours (MWh) to hundreds of MWh. Different battery storage technologies, such as ...



### Connecting Batteries in Series: A Diagram Guide

Therefore, it is important to carefully follow the series battery connection diagram to ensure correct polarity. Understanding the series battery connection diagram: The series battery ...

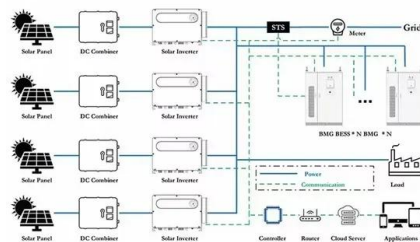


### Lithium-ion battery

A lithium-ion or Li-ion battery is a type of rechargeable battery that uses the reversible intercalation of Li + ions into electronically conducting solids to store energy. In comparison with other commercial rechargeable batteries, Li-ion ...

### Safety of Grid-Scale Battery Energy Storage Systems

Introduction to Lithium-Ion Battery Energy Storage Systems 3.1 Types of Lithium-Ion Battery A lithium-ion battery or li-ion battery (abbreviated as LIB) is a type of rechargeable battery. It was ...



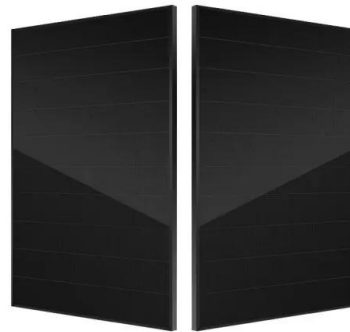
### How Lithium-ion Batteries Work , Department of Energy

Energy density is measured in watt-hours per kilogram (Wh/kg) and is the amount of energy the battery can store with respect to its mass. Power density is measured in watts per kilogram (W/kg) and is the amount of power that can be ...



### Lithium Ion Battery Energy Storage , Stat-X® ...

For over a century, battery technology has advanced, enabling energy storage to power homes, buildings, and factories and support the grid. The capability to supply this energy is accomplished through Battery Energy Storage Systems ...



### [3. System design and BMS selection guide](#)

Up to 20 Victron Lithium Smart batteries in total can be used in a system, regardless of the Victron BMS used. This enables 12V, 24V and 48V energy storage systems with up to 102kWh ...

### a Single Line Diagram, b.Architecture of Battery Energy ...

Lithium iron phosphate battery (LIPB) is the key equipment of battery energy storage system (BESS), which plays a major role in promoting the economic and stable operation of microgrid.



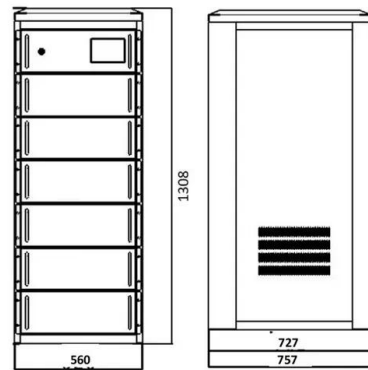
### 8.3: Electrochemistry

The term "lithium battery" refers to a family of different lithium-metal chemistries, comprising many types of cathodes and electrolytes but all with metallic lithium as the anode. ...



### The comprehensive guide to LiFePO4 lithium battery voltage diagrams

Understanding the voltage characteristics of LiFePO4 lithium batteries is crucial for their effective use in various applications nsulting a LiFePO4 lithium battery voltage ...



### Lithium-battery terminal voltage. , Download Scientific Diagram

Download scientific diagram , Lithium-battery terminal voltage. from publication: Coordinated Power Control of Variable-Speed Diesel Generators and Lithium-Battery on a Hybrid Electric ...

### A Complete Guide to Battery Terminal Connectors for Lithium ...

Table on Basic Types of Battery Terminals! Lithium Battery Terminal Types! Image Source: . o Nickel Plated . Nickel plated lithium battery terminals ...



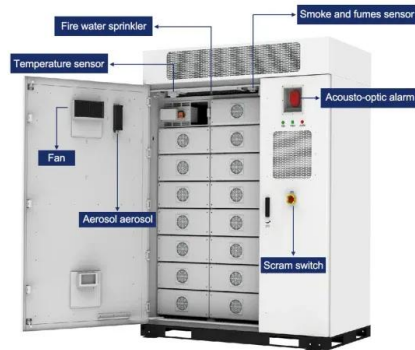
### Energy efficiency of lithium-ion batteries: Influential factors and

Unlike traditional power plants, renewable energy from solar panels or wind turbines needs storage solutions, such as BESSs to become reliable energy sources and ...



### Lithium Battery Pinout Guide

Overall, understanding the various connections within a lithium battery pinout is crucial for comprehending the flow of energy and ensuring the optimal functioning of portable power ...



### Battery energy storage systems

The origins of thermal runaway including side reactions of electrolyte, cathode, anode, and interfacial reactions at the surface of electrodes and Li plating. The temperature of a lithium ...



### **The Architecture of Battery Energy Storage Systems**

Types of Lithium Battery Terminals. Understanding the various types of battery connectors is essential, considering factors like efficiency, usage, and the materials constituting the connectors. Here are some key types of ...



### Battery energy storage systems

Battery energy storage systems at the generating unit terminals. For onshore non-synchronous generating units must be observed reasons for lithium-ion battery safety ...





## Structure of the battery energy storage system.

Download scientific diagram , Structure of the battery energy storage system. from publication: A Review of Lithium-Ion Battery Capacity Estimation Methods for Onboard Battery Management ...



## How to Connect Solar Panel to Battery and Inverter Diagram: A ...

6 ???· Unlock the power of renewable energy with our step-by-step guide on connecting a solar panel to a battery and inverter! This comprehensive article simplifies the installation ...

## Contact Us

---

For catalog requests, pricing, or partnerships, please visit:  
<https://www.vdbconstruction.co.za>