

Erect photovoltaic panels





Overview

Part 14 of the GPDO covers solar energy. Class A allows for solar panels to be erected on residential properties subject to a few conditions. The most important factor is that you must keep the solar photovoltaic (pv) or better known as a solar panels or indeed solar roof tiles within 20cm of the wall or slope of the roof. Yes, you can.

If you are looking to install solar equipment on a commercial property you can do this under Class J. Again there are a few restrictions such as the.

You can install solar panels or solar tiles in Conservation areas. You will not be able to install them on a wall facing a highway if residential, but you can on a roof facing a highway. For commercial.

See the relevant sections within Planning Geek: Class A – Solar equipment on domestic premises Class B – Stand-alone solar equipment on domestic premises Class J – Solar equipment.



Erect photovoltaic panels



Existing evidence on the effects of photovoltaic panels on ...

To phase out fossil fuels and reach a carbon-neutral future, solar energy and notably photovoltaic (PV) installations are being rapidly scaled up. Unlike other types of ...

Solar Panel Wiring Basics: Complete Guide & Tips to ...

All solar panel strings connected in parallel have to feature the same voltage, and they also have to comply with the NEC 690.7, NEC 690.8(A)(1), and NEC 690.8(A)(2). Modules need to be the same model in all ...



[Ground Mounted Solar Panel Systems UK](#)

Rooftop solar panel systems are ultimately restricted by the characteristics of the roof on which they are installed. If your roof is not set at the right angle (such as not facing ...

Solar Panel Building Regulations and SAP calculations, UK Guide

Solar Panel Building Regulations and SAP calculations, UK Guide. An increasing number of people are investing in solar energy. More and more homes are having ...



[How to Install Solar Panels on Roof](#)

This solar panel installation guide aims to provide an in-depth understanding of installation, maximizing power generation, and ensuring durability. Solar panel installation is a methodical process that converts ...

Solar panels in conservation areas , The rules explained

The solar panel installation must respect the area's character and appearance in its design, size and placement, so it can integrate well with its surroundings. Planning ...



Planning permission for solar panels , The Independent

For solar panel-related appeals specifically, this success rate may be even higher, with around half (44 per cent) of rejections to date having been overturned.



How To Mount Solar Panel -- A Step-by-Step DIY ...

2. Attach the Fixing Bracket to the Solar Panel. Once you've gathered all the tools and followed up on permits and safety requirements, it's time to set up your mounting system. The first step is to attach the fixing ...



Summary Table of Updates for Guidance Notes for Solar Photovoltaic (PV ...

to carry out erection of supporting structure for solar PV systems through the simplified requirements under the Minor Works Control System of the BD to ensure compliance with the ...

Building regulations for solar panels: explained [UK, 2024]

Your solar panel system has to be isolated from your mains electricity, so engineers are able to safely perform maintenance and servicing whenever your system needs ...



Solar Panel Installation: Understanding Ireland's Regulations And ...

By taking advantage of these government incentives, you not only save money but also contribute towards reducing carbon emissions. When choosing the right solar panel ...



Can I build my own Solar Panel System UK?

Depending on what kind of system you want the options for DIY solar panel systems UK include most of the market and a couple of left-field options. We brushed over one ...



Ground Mounted Solar Panel Systems UK

Even if you are an eligible candidate for a rooftop solar panel system, there are many benefits to selecting a ground mounted solar array instead. Firstly, the ground mounted solar systems are incredibly easy to place.

What is the best direction for solar panels to face?

South-facing solar panels will perform the best for a vast majority of homeowners. If you do not have a south-facing roof - don't worry! Your solar panels will still be able to produce energy, just not as much.. In this article, we'll discuss the best ...

Lithium battery parameters

Product capacity: 100Ah

Product size: 135*197*35mm

Product weight: 1.82kg

Product voltage: 3.2V

internal resistance: within 0.5



Solar Planning Applications

Permission to erect PHOTOVOLTAIC panels on a ground mounted system. The development will comprise of a 5.00 MWp SOLAR PV farm on 6.61 hectares of land located to the south of the ...





All the different options for fixing PV Panels

An in-roof solar panel system sits on top of the roofs battens and is then tiled or slated around. It is possible to create a whole roof out of solar panels using an in-roof system. Making the ...

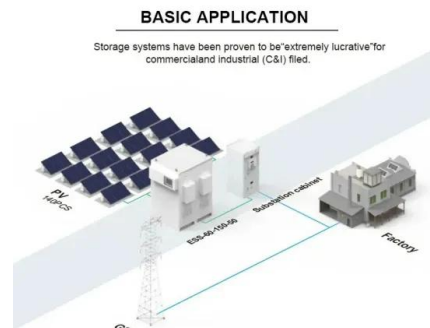


[Wall Mounted Solar Panels: The Complete Guide](#)

If you have a lot of land space, you could also consider ground-mounted solar panels, or solar panel fences, another type of vertical solar panel system. How much do wall ...

[Wall Mounted Solar Panels: The Complete Guide](#)

Wall-mounted solar panels work best on south-facing walls. The panels can be installed parallel to the wall or at a tilt. Wall-mounted panels aren't usually as efficient as roof-mounted ones. If you can't put solar panels on your ...



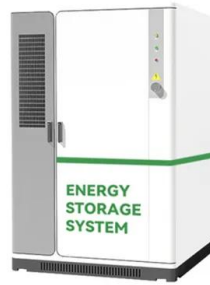
Solar Panel Orientation: Landscape vs Portrait , Fenice Energy

Landscape vs Portrait Orientation for Solar Panels. Introduction: There is much more before the decision of going solar it is not just the green energy authorities, but another ...



Building regulations for solar panels: explained [UK, 2024]

Your solar panel installer will mainly focus on the building regulations that apply to structural safety, electrical safety, and ventilation. However, tradespeople have to comply with all building regulations while ...



Solar panel myths: five common concerns about solar PV debunked

1. Solar panel costs are too expensive. Solar panels aren't cheap, but their price has dropped dramatically over the past decade. They can be less expensive than other renewable ...

Planning permission for solar photovoltaic (PV) systems

Planning permission for solar PV systems supplying residential properties. The key piece of legislation effecting planning permission for the installation of solar panels for residential ...



Solar Panel Scaffolding , Scaffolds for Solar Installs

Convert that energy directly into electricity. To then generate power for your property. Another type of panel is called the Solar thermal, which is a water heating system that can also be ...



Best direction for solar panels: How to position your solar PV panels

To find out, we used the MCS PV Output Calculator, which lets MCS-certified solar panel installers calculate the best direction and angle for panels anywhere in the UK. It ...



Types of PV solar panels: description and performance

Photovoltaic solar panels are used to generate electrical energy through the photovoltaic effect. However, solar thermal installations also use another type of solar panel ...

Solar Panel Fences . Costs & Benefits (2024)

Solar panel fences can be used as an alternative to roof-mounted installations; They are usually installed where there is a large piece of land to be fenced; Fences need to be in the right location to generate power; ...

GRADE A BATTERY

LiFePO4 battery will not burn when overcharged/over discharged, overcurrent or short circuited and can withstand high temperatures without decomposition.



Mounting Solar Panels on a Wall. A New World of Potential

Mounting Harnessing the Sun: Detailed Guide to Installing Solar Panels on a Wall. Installation Tips, Advantages of Vertical Mount and More Home solar energy system ...



The 6 types of solar panels , What's the best type? [2024]

The most efficient commercially available solar panel is a monocrystalline solar panel, which has an average efficiency rating of 18-24%. Perovskite solar panels have been known to achieve efficiencies over 30%, ...

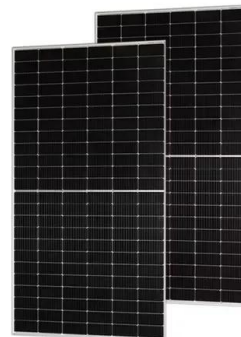


[Understanding Solar Panel Frames](#)

Solar energy has become an increasingly popular and eco-friendly choice for power generation. One critical component of any solar panel system is the frame that supports the solar panels. ...

[Guidance note for permitted development](#)

renewable technologies (e.g. solar and photovoltaic panels, wind turbines etc.) and the erection of some outbuildings, walls and fences. The rules around whether a development is "permitted" ...



Solar panels UK: The complete guide , The Independent

Solar panels harness energy from the sun, converting it to free renewable electricity. In the past, it took as many as 14 years for homeowners to break even on the best solar panels. The good news



Point Your Solar Panels in the Right Direction for the Most Power

Most residential solar panel customers will keep their panels at one angle throughout the year.
Season: Ideal solar panel angle: Summer: 10 (Miami) to 20 (Seattle) degrees: Autumn:



Contact Us

For catalog requests, pricing, or partnerships, please visit:
<https://www.vdbconstruction.co.za>