

Generators in wind power diagram





Overview

A wind power plant is also known as a wind farm or wind turbine. A wind power plant is a renewable source of electrical energy. The wind turbine is designed to use the speed and power of wind and convert it into electrical energy. The wind power plant is widely used in the entire world. Because the wind is the best natural.

According to the orientation of the axis of the rotor, wind turbines are classified into two types; 1. Horizontal axis 2. Vertical axis .

To estimate the performance of wind turbines, we need to consider the below parameters; 1. Power co-efficient 2. Tip speed ratio 3. Solidity.

According to the speed and frequency, there are different schemes available for the electric generation by the wind turbine. These schemes are listed below. 1. Constant speed constant frequency scheme 2. Dual speed.

The power produced by the wind turbine depends on the available wind speed. Therefore, the wind turbines are located at a place where persistent and strong wind is available. The wind.

What is a wind turbine generator?

Wind Turbine Generator: This is the primary component responsible for converting wind energy into electrical energy. It consists of a rotor with blades that spin in response to the wind, which in turn rotates a shaft connected to a generator.

What are the components of a wind turbine electrical schematic?

The main components of a wind turbine electrical schematic include the generator, the control system, the power electronics, and the grid connection. The generator is responsible for converting the mechanical energy from the spinning blades into electrical energy.

What is a wind turbine system diagram?

Understanding the system diagram of a wind turbine is essential to



comprehend its functioning and efficiency. The main components of a wind turbine system diagram include the rotor, nacelle, and tower. The rotor, which is comprised of several blades, captures the wind's energy and converts it into rotational motion.

How does a wind turbine generate electricity?

As the wind blows, a wind turbine converts the kinetic energy of the wind's motion into mechanical energy by the rotation of the rotor, and this mechanical energy is transmitted by the shaft to the generator through the gear train. The generator converts this mechanical energy into electrical energy, thereby generating electricity.

What is a wind turbine hub & generator?

Wind Turbine Hub: The hub is the central part of the wind turbine, where the blades are attached. It allows the blades to rotate freely and transfers the rotational energy to the rest of the system. Generator: The generator is responsible for converting the rotational energy from the blades into electrical energy.

What are the components of a wind turbine system?

A wind turbine system consists of several key components that work together to convert the kinetic energy of the wind into electrical energy. These components include: Turbine Blades: The turbine blades are designed to capture the energy from the wind and convert it into rotational motion.



Generators in wind power diagram



[6.4: The Physics of a Wind Turbine](#)

The Eq. (6.2) is already a useful formula - if we know how big is the area A to which the wind "delivers" its power. For example, is the rotor of a wind turbine is (R) , then the area in question is $(A=\pi R^2)$. Sometimes, however, we ...

An inside look at wind turbine electrical diagrams

The power converter also helps regulate the generated electricity, ensuring a stable and reliable power supply. Wind Turbine Electrical Diagram: Structure and Components. Wind turbines are ...



LFP 280Ah C&I

1: Modern wind turbine diagram. , Download Scientific Diagram

Download scientific diagram , 1: Modern wind turbine diagram. from publication: Dynamic Models for Wind Turbines and Wind Power Plants , The primary objective of this report was to develop



Wind power

Wind turbines are typically installed in windy locations. In the image, wind power generators in Spain, near an Osborne bull. Roscoe Wind Farm: an onshore wind farm in West Texas near Roscoe. Wind power is variable, and during low wind ...



12.8V 100Ah

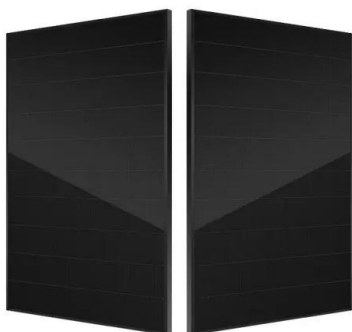


How does wind energy work?

Wind turbines turn energy from the wind into electricity. Turbines turn so that they face into the wind. The turbine blades are shaped so that even low winds will push them round. Kinetic ...

Wind Power Fundamentals

Wind Turbine Types Horizontal-Axis - HAWT o Single to many blades - 2, 3 most efficient o Upwind downwind facing Upwind, downwind facing o Solidity / Aspect Ratio - ...



Types of Wind Turbine Generators and their Functions

A DC wind generator system has a wind turbine, a DC generator, an insulated gate bipolar transistor (IGBT) inverter, a transformer, a controller, and a power grid. For shunt ...



How Do Wind Turbines Work? , Department of Energy

This mechanical power can be used for specific tasks (such as grinding grain or pumping water) or a generator can convert this mechanical power into electricity. A wind turbine turns wind energy into electricity using the aerodynamic force ...



ESS

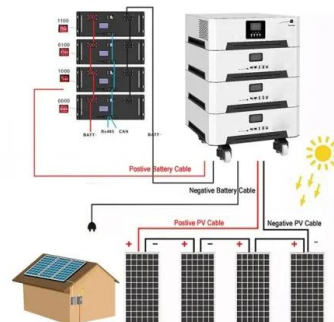


Wind Turbine Generator Technologies

Since there is a frequency converter between the wind turbine generator and the power grid, it becomes possible to decouple the network frequency and the rotor rotational ...

Introduction to Doubly-Fed Induction Generator for Wind Power ...

range required to exploit typical wind resources. An AC-DC-AC converter is included in the induction generator rotor circuit. The power electronic converters need only be rated to handle ...



Wind Energy Factsheet

Wind Resource and Potential. Approximately 2% of the solar energy striking the Earth's surface is converted into kinetic energy in wind. 1 Wind turbines convert the wind's kinetic energy to ...





[Wind turbine schematic diagram](#)

A wind turbine schematic diagram is a visual representation of the various components and systems that make up a wind turbine. It provides a clear and detailed overview of how the ...



Synchronous Generator as a Wind Power Generator

The circuit diagram of the full-bridge, three-phase, AC to DC rectifier is shown above. In this configuration, the wind turbine can operate the generator at a frequency independent of the synchronous frequency as changing the ...



How a Wind Turbine works

Wind turbines work on a very simple principle: the wind turns the blades, which causes the axis to rotate, which is attached to a generator, which produces DC electricity, which is then converted to AC via an inverter that can ...



[Wind Turbine Circuit Diagram](#)

The wind turbine circuit diagram is an invaluable tool for understanding how turbine-powered electricity is created. By mapping the system's components and wiring, a typist can easily understand the flow of ...



Wind turbine: what it is, parts and working , Enel Green Power

Read all about the wind turbine: what it is, the types, how it works, its main components, and much more information through our frequently asked questions. Wind farms are home to ...



Schematic diagram of wind turbine generator model

The typical power systems with SG and PE interaction are microgrids 44 and doubly fed induction generators-based (DFIG-based) wind farms. 45 Typical PE-dominated systems are ...



Understanding the Electrical Schematic of a Wind ...

The electrical schematic of a wind turbine typically includes components such as the generator, transformer, power conditioning system, and various protection devices. The generator is responsible for converting the mechanical energy of ...



Unraveling the Mysteries of 3 Phase Wind Turbine Wiring: Your ...

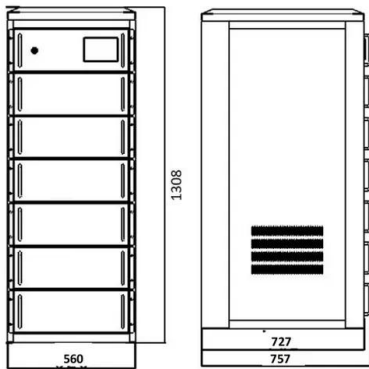
Unravel the mysteries of clean energy with our in-depth exploration of 3 phase wind turbine wiring diagrams. In this powerful guide, we'll illuminate the intricacies of how ...





(PDF) GENERATOR TYPES USED IN WIND TURBINES

[Show full abstract] the siting of wind turbines; prospects for tapping renewable energy resources in China; wind resource assessment in India; power evacuation and grid ...



Types of Wind Turbine: Horizontal Axis & Vertical Axis Turbine

A wind turbine is a mechanical machine that converts the kinetic energy of fast-moving winds into electrical energy. The energy converted is based on the axis of rotation of ...

Understanding the Electrical Schematic of a Wind ...

A wind turbine electrical schematic is a diagram that represents the electrical components and connections within a wind turbine system. It provides a visual representation of how different components work together to generate ...



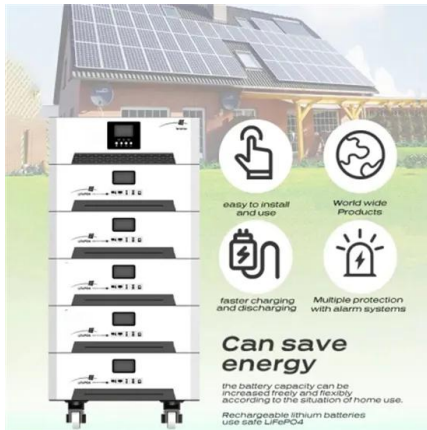
What is Wind Turbine? its Diagram and How it Works

Note that the primary function of a wind turbine is to generate power or directly use it for mechanical energy. Related: What is Turbine? its Diagram and How it Works. Components of ...



Wind Turbine Circuit Diagram

The circuit diagram of a wind turbine is essentially a map that shows how each component within the system is connected. At the center of the circuit is the wind turbine itself, ...



Vertical Axis Wind Turbine : Block Diagram, Working & Its

Vertical Axis Wind Turbine Block Diagram
Vertical Axis Wind Turbine. The type of Vertical Axis Wind Turbine used in this system is savories VAWT. Gear Box. A gearbox in a wind turbine is ...

Understanding the Electrical Generator Diagram: A ...

The main components depicted in an electrical generator diagram include a source of mechanical energy, such as a turbine or an engine, a rotor, a stator, and an electrical output. The ...



Contact Us

For catalog requests, pricing, or partnerships, please visit:
<https://www.vdbconstruction.co.za>