

# **Hazards of working in wind turbine plants**





## Overview

---

Are wind turbines a health & safety risk?

Both the health and safety benefits and risks of installations should be considered; for example, installation could also lead to other risks and in particular electrical, fire and emergency rescue safety being compromised (RenewableUK, 2011b). Manufacturing of wind turbines also presents some interesting issues for OSH.

What are wind turbine safety rules?

The Wind Turbine Safety Rules (WTSRs) are a model set of Safety Rules and procedures to help formalise a Safe System of Work (SSoW) to manage the significant risks associated with a wind turbine, both onshore and offshore.

What are the hazards associated with a wind turbine?

Personnel transfers — there are hazards during personnel transfers between marine vessels or helicopters and wind turbines, risk of collisions and falls into water by workers. Diving operations — there are hazards during foundation installation, cable laying, turbine inspections and maintenance.

Do wind farms have occupational risks?

Hence, an improved understanding of the sector's specific occupational risks is necessary (Garcia and Bruschi, 2016, Gul et al., 2018) to ensure the health and safety of workers involved throughout the whole lifecycle of wind farms: manufacturing, installation and construction, operation and maintenance, and decommissioning (Albrechtsen, 2012).

How to control health hazards in wind turbines?

In line with the approach of Chan and Mo (2017) to the technical reliability of wind turbines, control of health hazards should start at the WT design phase to minimise worker exposure (e.g., minimum maintenance requirements, ergonomic interventions, noise/vibration dampeners), complemented with



other engineering and administrative controls.

What challenges do wind turbine workers face?

Many aspects of siting, erecting, maintaining, servicing and possibly dismantling wind turbines are unique, and even if most of the job hazards that these workers will face are not, the working environments and combinations in which they are found create unique challenges.



## Hazards of working in wind turbine plants

---



### Understanding the Basics of Wind Turbine Safety Audits

Wind turbine safety protocols are critical to ensure that the equipment is functioning as expected, and that workers are safe while completing their tasks. Wind ...

### Wind Turbine safety - Top 5 Hazards , Creative Safety Supply ...

In order to keep everyone as safe as possible, let's look at the top five potential hazards for those who work with wind turbines. Hazard #1 - Falling. As almost everyone ...

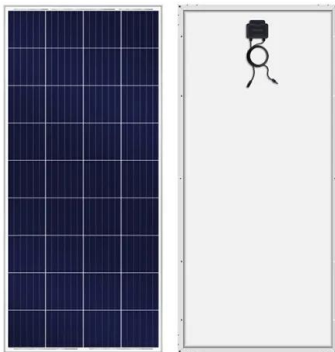


### Wind-turbine construction safety tips , Wind Systems Magazine

To protect yourself and your employees from the potential hazards of wind-turbine construction and demolition, it is crucial to conduct a thorough risk assessment, train ...

### Occupational health hazards and risks in the wind ...

technical reliability of wind turbines, control of health hazards should start at the WT design phase to minimise worker exposure (e.g., minimum maintenance requirements, ergonomic interven-



[WINDEXchange: Wind Energy Projects and Safety](#)

Wind turbines have an excellent safety record; however, as with any type of machinery, turbines can fail and cause safety risks that should be taken seriously. Turbine failures are considered rare events with fewer than 40 incidents ...

**What Are The Health Hazards Of Working In The Wind Turbine ...**

When electric currents overload the equipment in a wind turbine, it can lead to fires. Workers in or around the wind turbine can suffer heat burns before the fire is put out. Furthermore, ...



**OCCUPATIONAL SAFETY AND HEALTH IN THE WIND ENERGY ...**

health and safety of workers. Wind energy workers can be exposed to hazards that can result in deaths, serious injuries and ill health during the various phases of a wind farm project. Many ...



## How Do Wind Turbines Work? , Department of Energy

The Small Wind Guidebook helps homeowners, ranchers, and small businesses decide if wind energy can work for them. More wind energy resources can be found at WINDEXchange, ...



## Types of Wind Turbines

This is the most common type of wind turbine. The blades are designed to generate a lift force perpendicular to the direction of the airflow. The rotor diameter can be up to 100 meters and ...

## Wind Energy Operations & Maintenance Best Practices

1 Best Practices for Wind Power Facility Electrical Safety . Wind Energy Operations & Maintenance. Best Practices . for Wind Power Facility Electrical Safety This best practice ...



## [Wind Turbine Safety Rules , SafetyOn](#)

SafetyOn is the health and safety organisation for the onshore wind sector. Providing a voice for the dynamic and innovative onshore wind industry, we ensure transparency about the ...



### Understanding the Inner Workings of a Wind Turbine: A ...

Components of a Wind Turbine: A wind turbine consists of several key components that work together to harness the power of wind. These components include: The rotor: This is the part ...



#### [Wind turbines fire protection guideline](#)

The present guideline refers to the planning and operation of wind turbines constructed as lattice mast or tower. The fire protection concept applies to individual wind turbines as well as to wind ...

### Wind Power Plant

Working of Wind Power Plant. So, how does a wind turbine work? The wind turbine works on the principle of conversion of kinetic energy of wind to mechanical energy used to rotate the blades of a fan connected to an ...



#### Wind Power Plants Control Systems Based on SCADA System

Usually, to guarantee the safety of technicians working inside the wind power plant, a clear hierarchy must be predefined for all the users. Several parameters for each wind ...





### [Wind Turbine Safety Rules , SafetyOn](#)

The Wind Turbine Safety Rules (WTSRs) are a model set of Safety Rules and procedures to help formalise a Safe System of Work (SSoW) to manage the significant risks associated with a wind turbine, both onshore and offshore.



### **(PDF) Risk assessment of hazards due to the ...**

PDF , On Feb 1, 2018, Albara M. Mustafa and others published Risk assessment of hazards due to the installation and maintenance of onshore wind turbines , Find, read and cite all the research you

### **Wind Power Plants**

Lift Turbines. Larger, more modern propeller type turbines are based on the lift principle. The rotor blades are aerodynamically shaped and the air flows around them. If an appropriate angle of ...



### **Occupational safety and health in the wind energy sector**

Although wind energy is considered 'green' and good for the environment, it does not necessarily mean it will be good for the health and safety of workers. Wind energy workers can be ...



## Environmental, Health and Safety Guidelines for Wind Energy

The EHS Guidelines for wind energy include information relevant to environmental, health, and safety aspects of onshore and offshore wind energy facilities. It ...

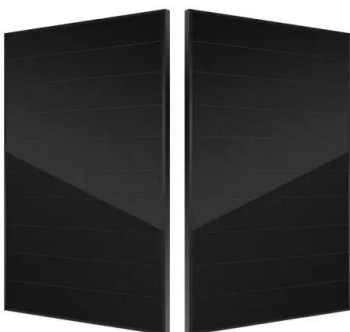


### [Safety in the Renewable Energy Industry](#)

Work Safety: Renewable Energy vs. Fossil Fuels. Confined spaces in power plants and other workspaces are risks. Many wind turbines are around 250 feet tall, which ...

## DNVGL-ST-0054 Transport and installation of wind power plants

Transport and installation of wind power plants  
DNV GL AS 1.3.2 Definitions Table 1-3 Terms  
Term Definition asset term used in the context of wind power plant projects to describe the ...



### Occupational health hazards and risks in the wind ...

plants, power tools and power sources such as generators, with the work of wind farms safety risks in life cycle of wind turbine. Saf. Sci. 106, 184-190.



### Occupational safety and health in the wind energy sector

This report introduces the wind energy sector and examines how its specific issues impact on OSH. It looks at the particular risks faced by workers during the various stages of the wind turbine life cycle, both onshore ...

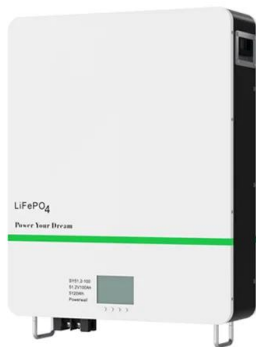


### Occupational safety and health in the wind energy ...

The wind energy sector is growing quickly as a result of the EU 2020 Strategy objectives for climate and energy policy. However, it brings with it many occupational safety and health (OSH) challenges as many aspects of ...

### Are there any risks associated with the production of wind energy

But even with the financial breaks, wind energy is a cost-intensive operation. According to the American Wind Energy Association, constructing a 50 megawatt wind farm (around 25 wind ...



### A Closer Look at the Environmental Impact of Solar and Wind Energy

1 Introduction. Transportation, electricity, heating, and cooling sectors are driven both by non-renewable and renewable primary energy sources. [] The main non-renewable ...



## Contact Us

---

For catalog requests, pricing, or partnerships, please visit:  
<https://www.vdbconstruction.co.za>