

# **How big a lamp should a 5 watt photovoltaic panel go with**





## Overview

---

How do I calculate the size of a solar photovoltaic system?

To calculate the size of a solar photovoltaic system, first divide your daily kWh energy requirement by your peak sun-hours to get the kW output you need. Then, divide the kW output by the efficiency of your solar panels to get the total number of solar panels for your system.

How many Watts Does a solar panel produce?

Watt (W) = the amount of power the solar panels are capable of producing  
Kilowatt (kW) = 1,000 Watts  
Watt-hour (Wh) = the amount of watts solar panels produce over an hour  
How big are solar panels?

You should note that when this guide talks about a solar panel's size, it's referring to its physical measurements – its dimensions.

Do solar panels have a higher wattage?

A solar panel's physical size tends to strongly correlate with its wattage. As a general rule, larger solar panels have higher power output than smaller ones. This is because larger solar panels have more surface area, meaning they can accommodate more solar cells.

How do I choose the right solar panel size?

The size of a solar panel should be chosen based on factors such as available space, energy needs, and budget. Solar panels can be combined to create larger systems, and the size of the system will depend on the energy needs of the user. Choosing the right size of the solar panel is important for maximizing energy production and cost savings.

How many watts a solar panel can fit on a roof?

In the UK, the typical size or wattage of a residential solar panel is 250W to 450W. Solar panel dimensions refer to the overall length, width and height of



the panel. These measurements are crucial because a panel's physical dimensions will dictate how many panels you can fit on your roof.

What size solar panel do I Need?

The most common solar panel sizes for residential installations are between 250W and 400W, while larger commercial installations may use panels up to 500W or more. The size of a solar panel affects its efficiency, with larger panels generally being more efficient but also more expensive and heavier.



## How big a lamp should a 5 watt photovoltaic panel go with

---



### 4kW solar panel systems , Costs & output [UK, 2024]

A 4kW solar panel system costs around £9,500 to buy and install. If you want to include a battery in the installation, this will add around £2,000 to the price, for an overall ...

### Solar-Panels

What are the Dimensions(size) of a 400-watt solar panel? The number of solar cells utilized in constructing the 400-watt Solar Panel determines the exact size of the Solar Panel in question. ...



### [Solar Panel Dimensions Sizes and Wattage](#)

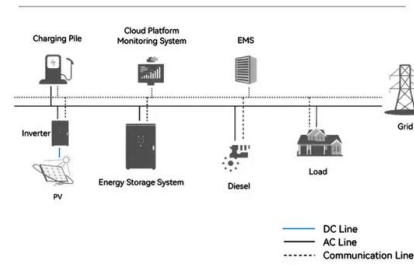
The size of a 300w solar panel A 300w solar panel is generally a popular choice for residential applications and small commercial systems thanks to its balance of performance ...

### How Many Solar Panels Do I Need To Power a House?

Finally, pick a solar panel power rating. The final variable is how much electricity each solar panel can produce per peak sun hour. This is called power rating and it's ...



### System Topology



### Solar Panel Size & Weight: A Comprehensive Guide

Have you ever wondered how big solar panels are? In this post, we help you fully understand solar panel size and weight. are made up of 72 cells, and can go up to 98 cells or more. ...

### How to Build a Small Solar Power System , LOW

You are not discharging the lead-acid battery below 50%, so the solar panel only needs to charge 50% (or less) of the storage capacity. For example, fully charging a 288 ...

### 12.8V 100Ah



### [What Can I Run With a 400W Solar Panel?](#)

You can pair the EcoFlow RIVER 2 with a 110W portable solar panel and the EcoFlow RIVER Pro with a 220W bifacial solar panel, but neither will support a 400W panel -- ...





### Solar Panel Wiring Basics: Complete Guide & Tips to Wire a PV ...

This includes conductor size and overcurrent devices. This is calculated by oversizing the Short Circuit Current (Isc) Connect solar panel strings in parallel by using a ...



### What can a 200 watt solar panel power? A complete guide

Some 200-watt solar panels have a nominal voltage of 24 Volts instead of 12 Volts, these solar panels produce around 5 Amps of current. For example, this 200W solar ...

### 12v Battery for Solar Panel (Best Charge for Each Amp)

A 5-watt solar panel produces roughly 0.28ah of current under ideal conditions, and so it would take around 360 hours to charge a 100ah battery fully, or 180 hours for a 50ah battery (typical for most cars). A panel of this ...



### Solar panel sizes and wattages , The Independent

\*Based on the average UK sunlight hours of 4.3 per day across all 12 months in 2023 with a 0.75x modifier to account for variables such as suboptimal panel orientation, low ...



### What's the Size of a Solar Panel? Solar Panel Size and Weight

The size of a solar panel, among other factors, influences the amount of electricity that is generated, and the amount of space that you have available influences the ...



### [What Size Solar Battery Do I Need?](#)

Ideally, your solar panels will charge your battery during the day, but it may be worth planning for scenarios in which snow, cloudy weather, and short winter days limit your solar production. For what it's worth, the ...

### How to design and calculate Solar Street Light system?

2. What is the size of the Solar Panel needed for my Solar Street Light system? Different size of solar PV modules will produce different amount of power. To find out the sizing of PV module, the total peak watt ...



### [500-Watt Solar Panel: Pro Guide](#)

Generally, a 500-watt solar panel will require about 40-50 square feet of space. However, the exact size can vary depending on the specific model and manufacturer. 2: How much energy can a 500-watt solar panel ...



### Solar Panel Sizes & Dimensions UK (2024)

The most common solar panel sizes for residential installations are between 250W and 400W, while larger commercial installations may use panels up to 500W or more. The size of a solar panel affects its efficiency, ...



LPSB48V400H  
48V or 51.2V

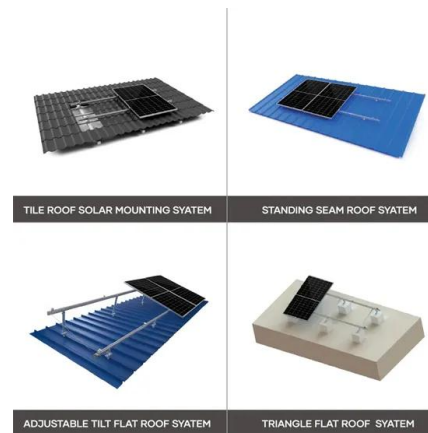


### **How to Properly Size Solar for Lighting and Power Projects**

When looking at a solar panel specification, you look at the Max Power Current (Imp) to see how many amps it will produce at full capacity. Depending on the panel type, this can be shown in ...

### Solar Panel Sizes and Wattage Explained

Solar Panel Size. It focuses on maximum electricity generation and overall capacity rather than the quantity of panels. To calculate the required system size, multiply the number of panels by the output. For example, a 6.6 ...



### **How to Calculate Solar Panel, Battery, and Inverter Size**

To determine the appropriate size of your solar panel array, you'll need to consider your daily energy consumption, the average daily sunlight hours in your region, and the efficiency of your solar panel system.



### How to Use a Solar Panel to Power a Fan (Key Steps)

The size of the solar panel. Whether you have some solar battery backup system. You don't have to worry about that if you go with a solar fan kit. A solar fan kit takes ...

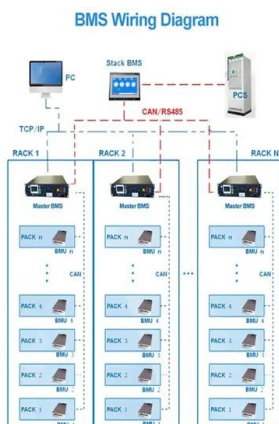


### Guide to Solar Panel Sizes & Dimensions (November ...

In addition to solar panel size, you should also consider the weight. The standard solar panel weight in the UK is 18 - 21kg for residential settings and 22 - 30kg for commercial settings. These include the weights of ...

### Solar Panels for Campers: A Beginner's Guide to RV Solar System

These allow you to adjust your setup based on your current needs and sun exposure. Camping solar panels come in various sizes, from compact 50-watt units to larger ...



### [How to Properly Fuse Your Solar System](#)

While small in size, solar panel fuses play a crucial role in maintaining the integrity and security of your solar panel installation. What size fuse for a 400-watt solar ...



### Solar Lighting Design Guide - Wattage / Lumen ...

Each fixture has a standard LED wattage range. Depending on the application, different wattages can be used to provide the necessary illumination for the application at hand. Working with the solar lighting specialist can help ...



### Guide to Solar Panel Sizes & Dimensions (November ...

Some common solar panel system sizes include a 3kW solar panel system, a 4 kilowatt solar panel system and a 5kW solar panels. For instance, a typical 2kW solar panel system suited for 1-3 people will need ...

### What Can Be Powered by a 300-Watt Solar Panel?

A 300W solar panel can generate between 30 to 45 DC volts, depending on the quantity of solar cells it contains. How Big Is a 300-Watt Solar Panel? 300-watt solar panels, also known as standard rooftop panels, are ...



All in one  
50-500 Kwh  
Hybird  
System

### What Size Fuse Do I Need for My Solar Panels? Types ...

What Size Fuse for 100W Solar Panel? If you're wondering what size fuse for 100W solar panel, the answer is 15 amps. This is because the maximum current that a 100W solar panel can output is 8.3 amps. So, if you ...



### 400W Solar Panel Kit (DIY): What Size Battery, Charge ...

How much power does a 400-watt solar panel produce? On average you can expect 1600-2600 Wh or 260-320 watts out per hour from your 400W solar panel. The difference will depend on the weather conditions & ...



### Solar Panel kWh Calculator: kWh Production Per Day, ...

In a 5.50 peak sun hour area, a 300-watt solar panel will produce 1.24 kWh per day, 37.13 kWh per month, and 451.69 kWh per year. Example: What Is The Output Of a 100-Watt Solar Panel? Let's look at a small 100-watt solar panel. ...

### 40 Watt Solar Panel: Everything You Need To Know

A 40-watt solar panel can charge any size 12v battery but it can only add 16 Amps to the battery bank in a whole day. A 40-watt solar panel will take 5 hours to charge a 18Ah battery from 0-100% . Go Power 40W solar ...



## Contact Us

---

For catalog requests, pricing, or partnerships, please visit:  
<https://www.vdbconstruction.co.za>