

How big is a 1500 watt photovoltaic panel





Overview

Solar panel size varies from brand to brand, but you can expect your residential panels to measure around 5.5 feet by 3 feet and weigh about 40 to 50 pounds. How many solar panels are in a 20 x 330 watt solar system?

The number of solar panels x output = Solar system size 20 x 330W panels = 6,600 W or 6.6kW solar system The number of solar panels multiplied by their output determines the size of the solar system. For example, if you have 20 solar panels with a wattage of 330W each, it results in a 6,600 W or 6.6kW solar system.

What is the size of a solar panel?

The size of a solar panel is measured in watts, which indicates the amount of power it can generate. The most common solar panel sizes for residential installations are between 250W and 400W, while larger commercial installations may use panels up to 500W or more.

How many Watts Does a solar panel produce?

Watt (W) = the amount of power the solar panels are capable of producing
Kilowatt (kW) = 1,000 Watts
Watt-hour (Wh) = the amount of watts solar panels produce over an hour
How big are solar panels?

You should note that when this guide talks about a solar panel's size, it's referring to its physical measurements - its dimensions.

How many watts a solar panel can fit on a roof?

In the UK, the typical size or wattage of a residential solar panel is 250W to 450W. Solar panel dimensions refer to the overall length, width and height of the panel. These measurements are crucial because a panel's physical dimensions will dictate how many panels you can fit on your roof.

What is solar panel wattage?



Solar panel wattage refers to the amount of power a solar panel can generate under standard test conditions (STC). Measured in watts, solar panel wattage refers to the maximum power output a solar panel can produce when exposed to sunlight.

What size solar panel do I Need?

The most common solar panel sizes for residential installations are between 250W and 400W, while larger commercial installations may use panels up to 500W or more. The size of a solar panel affects its efficiency, with larger panels generally being more efficient but also more expensive and heavier.



How big is a 1500 watt photovoltaic panel

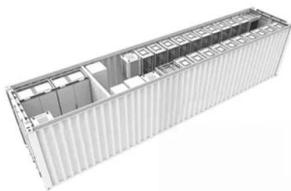


Solar Panel Sizes and Wattage: A Comprehensive Guide to ...

A common residential solar panel size is approximately 65 inches by 39 inches, and typically has a power output of around 300 watts. Larger panels, more common in ...

1500 Watt Heater: What Size Inverter & Solar Panel ...

Now before calculating what size solar panel and battery you need for the solar power heater, first let's have a look at how much electricity a 1500-watt heater consumes. You'd need a 1.2kWh solar panel system to ...



[Solar Panel Dimensions Sizes and Wattage](#)

The size of a 300w solar panel A 300w solar panel is generally a popular choice for residential applications and small commercial systems thanks to its balance of performance ...

How to Size a Solar System [Step-by-Step Guide]

Once you have your final array size, simply divide by the wattage of your desired solar panels to figure out how many panels you need. Using our example of a 7.2 kW (7,200-watt) array for ...



Solar Panel Sizes And Wattage , Sizing, Dimensions & Weight

Watt (W) and kilowatt (kW): a unit used to quantify the rate of energy transfer. One kilowatt = 1000 watts. Solar panels' rating in watts specifies the maximum power ...

Solar Panel Sizes and Wattage Explained

Solar Panel Size. It focuses on maximum electricity generation and overall capacity rather than the quantity of panels. To calculate the required system size, multiply the number of panels by the output. For example, a 6.6 ...



How Many Solar Panels Do I Need For a 2000 Watt Inverter?

Five 300 watt solar panels is good for 1500 watts so you can start there. To be on the safe side, add 10% or more to the solar panel size. If your inverter load needs 2000 watts, get a 2100 ...



Solar Panel Size Calculator: What Size Panel Do I Need?

Calculate what size solar panel you need to charge a lithium or lead acid battery with our free solar panel size calculator. You need a 120 watt solar panel to charge a 12V ...



[Solar Panel Ratings Explained](#)

What size fuse for solar panels? Solar panel Voltage ratings: For instance, in the nameplate above, my 100-watt solar panel has an Operating Cell Temperature range of -40°C to $+85^{\circ}\text{C}$, which is a standard rating for solar ...

Calculate Battery Size For Any Size Inverter (Using Our ...)

Battery size chart for inverter. Note! The input voltage of the inverter should match the battery voltage. (For example 12v battery for 12v inverter, 24v battery for 24v inverter and 48v battery for 48v inverter)



How many solar panels do I need for 1500 kWh per month?

For example, on average, a person in Iowa City, IA would need a 10.6 kW system consisting of about 32 residential solar panels to produce 1500 kWh per month. A ...



Solar Panel Wiring Basics: Complete Guide & Tips to Wire a PV ...

This includes conductor size and overcurrent devices. This is calculated by oversizing the Short Circuit Connect solar panel strings in parallel by using a connector ...



200 Watt Solar Panel Guide , All You Need to Know

The fuse size for a 200 watt solar panel should generally be in the range of 15 to 18 A. If you want o round it off to the next best fuse size, we will recommend a fuse size of ...

Solar panel sizes and wattages , The Independent

*Based on the average UK sunlight hours of 4.3 per day across all 12 months in 2023 with a 0.75x modifier to account for variables such as suboptimal panel orientation, low ...



Modular design, unlimited combinations in parallel
BUILT-IN DUAL FIRE PROTECTION MODULE



Everything You Should Know About 400w Solar Panels

Solar energy continues to redefine the global energy landscape, offering a sustainable, renewable, and increasingly affordable power source. Among the innovations ...



Solar Panel Sizes, Dimensions & Weight

You might also hear of 120 half-cell panels (equivalent size to 60 cells) or 144 half-cell panels (equivalent size to 72 cells). These half-cell panels, as you might suspect, have their solar cells cut in half.



How Big is a Solar Panel? A Guide to Solar Panel Dimensions

Let's assume you want to install a 5 kW solar system in your home using a 365-watt solar panel. A 365-Watt solar panel weighs 45 pounds. So, first, you'll need to ...



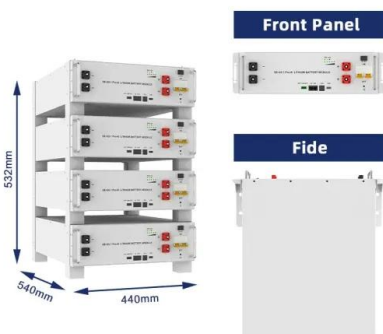
How Many Solar Panels Does It Take to Run a Heater?

A 1500 watt heater will keep running as long as the solar panels can produce at least 1500 watts an hour. A 250 watt solar panel might produce only 235 or even 200 watts depending on the ...



Guide to Solar Panel Sizes & Dimensions (November ...

Some common solar panel system sizes include a 3kW solar panel system, a 4 kilowatt solar panel system and a 5kW solar panels. For instance, a typical 2kW solar panel system suited for 1-3 people will need ...





Solar Panel kWh Calculator: kWh Production Per Day, Month, Year

Big solar panel system: 1kW, 4kW, 5kW, 10kW system. These include several solar panels connected together in a system (2 - 50 solar panels). Let's say you have a 300-watt solar ...



- ✓ ALL IN ONE
- ✓ 100Kw/174Kwh High Capacity
- ✓ Intelligent Integration

How Big Is A Solar Panel? A Guide To The Different

For example, the equivalent of a 60 cell solar panel is a 120 half-cut cell solar panel. The equivalent of a 72 cell solar panel is a 144 half-cut cell solar panel. 120 half-cut cell ...

The Best 1000 Watt Solar Panel Kit , SolarKnowHow

A 1000 watt solar panel kit is ideal for your RV, Boat, or Cabin. A 1000-watt solar panel kit with the right size inverter and battery bank will provide an off-grid solution for small cabins, RVs, ...



1000 Watt Solar Panel Systems: Everything You Need to Know

1000 Watt Solar Panel Systems: EVERYTHING You NEED to Know. 1000 watt solar panel system is one of the most popular sizes for solar panel arrays. BUT if you're ...



[Solar Panel Sizes & Dimensions UK \(2024\)](#)

Many solar panel companies make small solar panels designed specifically for small roofs. You can also opt for high-efficiency solar panels that have conversion rates as ...



2MW / 5MWh
Customizable

How Much Do Solar Panels Cost for a 1,500 Square ...

For a home that's approximately 1,500 square feet in size, 4,000 watt (4 kW) solar panel system: \$12,000 - \$16,000; 6,000 watt (6 kW) solar panel system: \$18,000 - \$22,000; These cost estimates only account for the ...

[Solar Panel Sizes and Wattage Explained](#)

Moreover, solar panel size per kW and watt calculations are estimates that may vary depending on panel efficiency, shading, and orientation. For specific sizing and installation recommendations, it will be good to consult ...



How to Calculate Solar Panel, Battery, and Inverter Size



- Step 1: Turn on all the appliances and devices you want to power with the solar panel system.
- Step 2: Use a clamp meter to measure the current consumption in amps (A) by clamping it around the phase wire of your electric meter.
- Step 3: ...



Solar Panel Cost per Square Foot: How Much Will Solar Cost For ...

How much do solar panels cost for a 1,500 square foot house? premium solar panels cost ~\$13 per square foot. A 400-watt solar panel is typically 3 feet wide by 5 feet long, ...



Contact Us

For catalog requests, pricing, or partnerships, please visit:
<https://www.vdbconstruction.co.za>