

How big of an inverter should I install for a 19kw photovoltaic





Overview

Evaluating my power needs involves calculating the total wattage required by adding up the wattages of all devices I plan to power. When considering an inverter's size, it's important to understand the difference between surge power, which is the peak power needed to start a device, and continuous power, the amount.

To accurately determine the total wattage needed for an inverter setup, add up the running watts of all devices you plan to power. It's important to calculate both the running watts, which represent the continuous power.

Considering the importance of safeguarding against unexpected power fluctuations, incorporating a 10-20% safety margin when calculating total device wattages for an inverter setup is vital. When determining the.

When planning for future expansions, it's vital to think ahead and anticipate the need for increased power capacity. Selecting an inverter that can easily accommodate additional.

To guarantee a reliable power supply, it is essential to align the continuous output of the inverter with or surpass the total wattage requirements of all connected devices. When selecting.



How big of an inverter should I install for a 19kw photovoltaic



[What Size Solar Inverter Do I Need](#)

Before investing in a solar inverter, you should consider several important matters. First, the size of the inverter should match the size of the solar system you intend to install. The larger the system, the more power you need ...

What Size Solar Inverter Do You Need for Solar Panels? Explained

Inverter Size (watts) = Solar Panel Rating (watts) / Inverter Efficiency (%) For example, if you have a 6 kW (6,000 watts) solar array and the inverter efficiency is 96%, you ...



51.2V 300AH

The Only Inverter Size Chart You'll Ever Need

We created a formula below which helps you know what size inverter you need based on the appliances you want to power: Inverter size (Watt) = Total sum of all appliances ...



Size your solar system

A connection limit restricts the size of the inverter that can be connected to the grid. If the connection limit is, for example, 10 kW per phase, you could connect a 10 kW inverter if your ...



How to pick the right Inverter: Guide from Naked Solar

Both of which may affect your choice of inverter. A good quality solar energy inverter is an essential part of your panel set up. it's an intelligent piece of kit that connects to your system and should be placed where you can easily get at it. ...



A Guide to Large Photovoltaic Powerplant Design

If the site is not privately owned, a lease agreement signed by the owner will be necessary in order to install a power plant. These lease agreements typically last 25 years with ...



How do you properly size an inverter for a house? : r/solar

Discussion of solar photovoltaic systems, modules, the solar energy business, solar power production, utility-scale, commercial rooftop, residential, off-grid systems and more. Is this a ...





How Many Solar Panels Can I Connect to an Inverter?

That is, with a 3000w inverter you can install up to 3900 watts (3.9kw) of solar panel power. Overclocking is a great way to avoid the possibility of voiding the inverter and ...



Solar System Size Calculator: How Much Solar Do I ...

2. Convert your solar system's size to watts. To convert kilowatts to watts, simply multiply kilowatts by 1,000. (I'll use the solar system size we calculated in the previous section.) $3 \text{ kW} \times 1,000 = 3,000 \text{ W}$. 3. Divide your ...

[10kW Solar System \(All you need to know\)](#)

The answer lies with what is in your solar panels -- solar cells or photovoltaic (PV). These convert solar power to electricity. For example, if we were to install a 10kW ...



How Many Solar Panels Do I Need To Power a House?

Next divide the total system size in Watts by the power rating of the panels you'd prefer. If we use 400W, that would mean you need 13 solar panels. System size (5,200 ...



[Inverter Wire Size Calculator](#)

Check The Inverter Store's handy calculator and guide that breaks down the complex process for you easily. Learning what cable to use for an inverter is a vital step in the process of powering ...



INTEGRATED DESIGN
EASY TO TRANSPORT AND INSTALL,
FLEXIBLE DEPLOYMENT

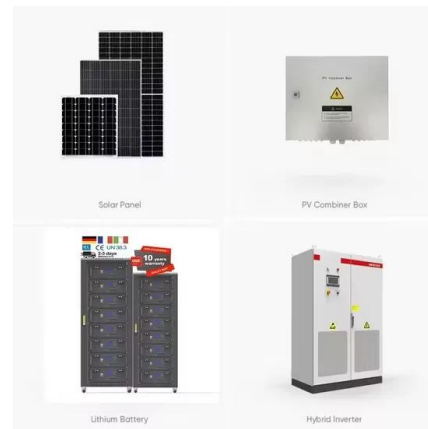


The expert guide to solar panel inverters & costs [UK, 2024]

Microinverters are significantly more expensive than string inverters when you start thinking about them on a whole-system basis. If a solar panel system comprising 12 ...

[Solar PV Inverter Sizing , Complete Guide](#)

You can find many around you who are deploying a solar PV system without correctly sizing the inverters. But it can hamper the system's optimal performance. However, determining the right ...



DC Over-Sizing PV Solar In Ireland , Energy Hero

The amount of money you'll save by dropping an inverter size or two won't be dramatic. But consider this: you may be able to buy a high-end 3 kW inverter for the same ...



Find the Right Inverter Size: How Big An Inverter Do You need?

What Size Inverter Should You Buy? Once you've figured out what devices you want to plug into your inverter, you can dig right in and figure out the right size inverter to buy. ...



Lesson 5: Solar inverter oversizing vs. undersizing

How much should you undersize an inverter? According to the Clean Energy Council, you can have a solar array that can put out up to 30% more power than the inverter is rated for and ...

4kW solar panel systems , Costs & output [UK, 2024]

What size inverter should you add to a 4kW system? Your solar panel system should be 50% bigger than your inverter, as a rule - so for a 4kW system you'll roughly need ...



- IP65/IP55 OUTDOOR CABINET
- ALUMINUM
- OUTDOOR ENERGY STORAGE CABINET
- OUTDOOR MODULE CABINET

Inverter Size Calculator

Plus, get ready to create an HTML inverter size calculator with a clickable button! Learn how to calculate the required size of an inverter with our in-depth guide. We provide a handy formula, ...



Solar Battery Size Calculator: What size battery do I need?

Picking the Correct Solar and Battery System Size. Using Sunwiz's PVSell software, we've put together the below table to help shoppers choose the right system size for ...



Solar system size limits: How much does your local ...

Single phase: Up to 5kW system size limit (by inverter) 3-phase: Up to 30kW system size limit (by inverter - 10kW per phase) Depending on the transformer size and existing inverter connections an inverter smaller than ...

Calculate Battery Size For Any Size Inverter (Using Our ...

Battery size chart for inverter. Note! The input voltage of the inverter should match the battery voltage. (For example 12v battery for 12v inverter, 24v battery for 24v inverter and 48v battery for 48v inverter



Connect Solar Panels To An Inverter: A Step-by-Step Guide

You should calculate the total power consumption of your appliances and devices that you want to run on solar power. This will help you determine the number of solar panels and the size of the ...



Contact Us

For catalog requests, pricing, or partnerships, please visit:
<https://www.vdbconstruction.co.za>