

# How fast or slow is the solar panel charging





## Overview

---

How long does it take a solar panel to charge a battery?

Here's a simplified way to estimate how long it'd take for the solar panel to charge the battery: 1. Divide solar panel wattage by battery voltage to estimate maximum charge current output by solar charge controller: 2. Multiply current by rule-of-thumb system losses (20%) and charge controller efficiency (PWM: 75%; MPPT: 95%): 3.

When is a solar battery charging system complete?

The solar battery charging system is only complete if these components are in working order: the array or panels, the charge controller, and the batteries. Here is what happens right from when sunlight hits the panel to when the battery receives and stores energy:.

How long does a 6 watt solar panel charge?

Example: 6 Watt Solar Panel charging a 4,000mAh, 3.7V Battery - Time =  $14.8\text{Wh} / 6\text{ Watts} \times 2 = 4.9\text{ hours}$  Tip: Get a " USB Multimeter " from Amazon to verify your charge rate. If you are connecting to an off the shelf battery pack, there are a number of reasons that the charge rate could be worse.

How long does it take to charge a 960 watt solar panel?

6. Add 2 hours to account for the absorption charging stage of most charge controllers: So, in this example, it'd take about 9 hours to charge a 48 volt battery with a 960 watt solar panel. A solar battery bank 24V, 250Ah is charged via an MPPT controller and solar panels.

Why is my solar battery charging so slow?

Unexpected dips or excessive spikes in the data can indicate charging problems from worn batteries, faulty equipment, or undersized solar capacity. Reviewing these long-term patterns is key to ensuring your solar batteries fill up as expected each day! How Long Should Solar Battery Charging Take?

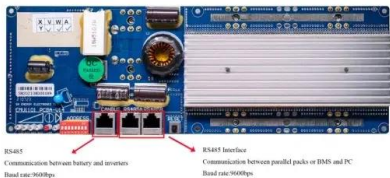


How do you calculate solar charge time?

Unfortunately, solar charge time is not as simple as just dividing your battery capacity (measured in Watt hours) by the power of your solar panel (measured in Watts). Even in perfect conditions, you get loss due to: We go through two common battery chemistries and give you some rules of thumb for each. [Shop Solar Panels](#)



## How fast or slow is the solar panel charging



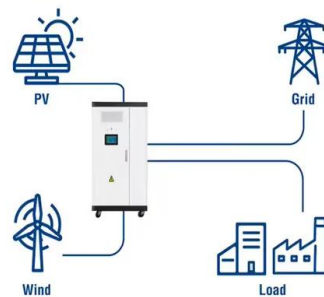
### Best portable solar chargers 2024 , The Independent

The Forclaz solar panel SLR 500 is a 10W solar charger with a single USB port, ideal for keeping battery packs topped up while on the move or camping. (two fast ...

### Optimizing Solar Powered Charging Stations for Electric Vehicles

$D_{fast} = \frac{1 \cdot V_{in}}{V_{out}}$ , fast  $D_{fast} = 1 - 5V * 0.9 / 41V$   
 $D_{fast} \approx 0.89$  The cost implications of fast versus slow charging in the context of a solar-powered EV charging station, as indicated by the ...

### Utility-Scale ESS solutions



### The Best 8 Solar Chargers of 2024 , Tested & Rated

When you're adventuring outside, a fast-charging portable solar panel is key. The X-Dragon 20W quickly charges all your devices in a small, reliable package. This 20W portable solar panel isn't particularly expensive ...

### How long does it take to charge batteries from solar ...

Here's a simplified way to estimate how long it'd take for the solar panel to charge the battery: 1. Divide solar panel wattage by battery voltage to estimate maximum charge current output by solar charge controller: 960W / ...



### How to Maximize Your EcoFlow Delta 2 Solar ...

To connect your solar panels to the Delta 2, you'll need an XT60 to MC4 cable. It's not included with the unit, so don't forget to grab one from our Amazon store. Now, let's get to know your solar panels. Solar Panel ...



### Charging a Solar Battery: Dos and Don'ts for Best ...

Charging a solar battery has never been faster - it fully charges in just 2.5 hours with 6 SolarSaga 200W solar panels or in 2 hours via an AC wall outlet. It also has a generous 5-year warranty when purchased directly from ...



### Charging a Solar Battery: Dos and Don'ts for Best Practices and ...

Moreover, our Solar Generator 2000 Pro is a solar power battery solution you can trust, whether used as a solar panel car charger or waterproof power bank. providing ...





## How to Know if Your Solar Battery is Fully Charged (I)

Under ideal sun conditions, size compatibly matched panels and batteries refill charge in 4-8 hours for lead acid or 2-3 hours for lithium ion. For example, a 400-watt solar panel system should fully charge a 400 Ah lead ...



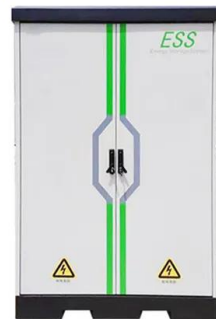
## Solar Battery Charge Time Calculator (12v, 24v, 48v)

4. Take into account for battery charge efficiency rate by multiplying the battery charge efficiency by the solar panel's output (W) after the charge controller. Based on ...



## The Best 6 Portable Solar Chargers of 2024 , Tested

This panel quickly unfolds to six panels for fast and efficient charging and packs away just as easily: A powerful, well-designed, durable panel, with average solar ...



## [Reolink Solar Panels Not Working](#)

Then, reconnect the camera to the solar panel correctly, place the solar panel in a sunny location, and check if the battery level increases. 6. Swap testing. If the camera still does not charge, try ...





## Solar Power Bank Charging Time - How Long To Fully Charge?

A solar power bank uses a small built-in solar panel to charge a rechargeable battery (usually a lithium-ion battery). The nature of charging batteries too also means it will charge much ...



## Using a solar panel to charge a power bank : r/batteries

Here are the specs for both the solar panel and the power bank. I'm no solar charger expert and a few doubts on the design of such system came to my mind: The power bank can draw up to ...



## Step-by-Step Tutorial: How to Charge Explorer 1000

This technology optimizes the Explorer 1000's solar charging capabilities, ensuring you harness the maximum power from your solar panels. Considering how to connect SolarSaga 100W ...



## Solar Battery Charging Basics: Maximizing Efficiency ...

Solar Battery Charging Time. Under optimal conditions, a solar panel typically needs an average of five to eight hours to fully recharge a depleted solar battery. The time it takes to charge a solar battery from the electricity ...



### How to troubleshoot Arlo Solar Panel charging issues

Note: Charge your Arlo camera before using it with the Arlo Solar Panel. The Arlo Solar Panel is meant to keep your camera charged, not to charge it from low to full ...



### Solar charging the Ecoflow Delta Pro , DIY Solar Power Forum

I have a Delta max and 1 xtra battery for a total of 3.6 Kw but solar charging is limited to the standard 60 vdc 12 amps. S. schmism Solar Addict. Joined Jul 13, 2020 I am ...

### Are Solar Panels Worth It? (UK Edition) , Solar Fast

Generally just the one inverter will do the job if it's a hybrid one that controls battery charging and grid provision. Panels, once again, slow burning, way a solar energy ...



### [Charging a Leisure Battery](#)

It might take a day, or even two, to charge the battery fully, but generally speaking long slow charges are more beneficial than short fast ones. What is more, if you choose a fully automatic charger (sometimes known as a smart charger), you ...



## Estimating Solar Charge Time for Batteries , Voltaic Systems

I have a 6V 4.5 battery and a solar panel 6V and a trail Camera 1000-2000ma how long will it take to charge the battery or can I put a 12V solar panel on a 6V Battery and the camera will it blow ...

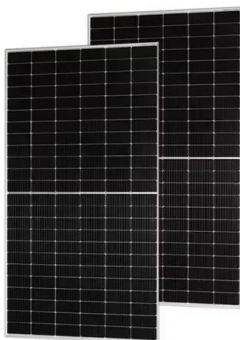


## How to Optimize Solar Charging With the EcoFlow Delta 2

Want to see the lightning fast charging speeds everyone is talking about? Here's how to optimize your EcoFlow Delta 2 solar charging! we recommend the EcoFlow ...

## Optimizing Solar Powered Charging Stations for Electric Vehicles

Electric Vehicles: Integration Fast and Slow Charging with Renewable Energy Sources Monika Dudi1, Mumal Bhati1, Neha Sharma1, Nikita Choudhary1, Vikas overall performance of the ...



## Solar Panel Size Calculator - Charge Your Battery In ...

Use our solar panel size calculator to find out the ideal solar panel size to charge your lead acid or lithium battery of any capacity and voltage. For example, 50ah, 100ah, 200ah, 120ah.



### Why Solar Panels Charge Slowly

There are several possible causes for Reolink Solar Panel to charge Reolink battery-powered cameras slowly, please follow the steps below to troubleshoot the issue. Cause 1. Insufficient ...



### **How Fast Can a Solar Panel Charge a Battery: Tips to Maximize**

16 ????. Discover how fast solar panels can charge batteries in this comprehensive guide. We break down the factors affecting charging speed, such as panel types, battery ...

### **Slow vs. Fast Charging: Pros, Cons, and Insights**

Optimal Scenarios for Fast and Slow Charging. The choice between fast and slow charging often depends on the specific situation and user needs. Fast charging is ideal ...



### **How Long Does It Take to Charge a Solar Power Bank?**

Solar power banks use solar panels to generate energy for charging, and they work best during the early hours of the day when light energy is at its peak. The number of times you can charge your device with a fully charged solar power ...



## How to Charge Batteries with Solar Panels: A Complete Guide for

Solar Panels 101: Solar panels convert sunlight into electricity through a process of light absorption, electricity generation, and energy conversion, allowing efficient ...



### [How Fast Can a Portable Solar Panel Charge?](#)

So, how fast can a portable solar panel charge? Portable solar panels are smaller than fixed solar panels, and their charging time varies based on the power output ...

## Charging an EV With Solar Panels , How Long Does it Take?

Using solar panels for EV charging can help reduce electricity bills. Learn more >> Skip to content (08) 6363 5420. Fast Free Quotes. e-Solar - Your Local Solar Experts. Call ...



## Contact Us

---

For catalog requests, pricing, or partnerships, please visit:  
<https://www.vdbconstruction.co.za>