

How heavy is a photovoltaic panel on the roof





Overview

The average weight for a residential solar panel is around 40 pounds. They are approximately 5.4 feet long and 3.25 feet wide, which works out to about 2.3 pounds of weight per square foot. How much weight do solar panels add to your roof?

By construction standards, the weight solar panels add to your roof usually isn't a cause for concern. The average residential PV panel measures about 1.65m by 1m. Including mounting equipment will add about 20kg to your roof. For a full 6kW array, you will need about 20 panels, adding about 365kg of dispersed weight.

How much does a solar panel weigh?

Solar panels usually weigh about 40 to 50 pounds. Commercial solar panels are generally larger than residential solar panels at 6.5 feet by 3 feet. Installing high-efficiency solar panels can reduce the number of panels you need, which lightens the total load on your roof. How big is a solar panel?

.

How much weight does a PV panel add to a roof?

The average residential PV panel measures about 1.65m by 1m. Including mounting equipment will add about 20kg to your roof. For a full 6kW array, you will need about 20 panels, adding about 365kg of dispersed weight. Fortunately, the weight is distributed across your roof, so no one area bears the bulk of this burden.

How much does an RV solar panel weigh?

RV solar panels are generally rated at 100-150 watts and are smaller and lighter than residential solar panels. In general, the average rigid solar panel used in RV solar systems is rated at 100 Watts and weighs about 15lbs.

How many solar panels can be installed on a roof?



Your roof will need to be large enough to fit a suitable number of solar panels, as there's rarely much point putting just two or three panels up there. The average solar panel takes up 2m², and your installer should leave around 40cm on each side of the array, as well as 3cm between every panel.

How big are solar panels?

Residential solar panels consist of around 60 solar cells and are roughly 5.5 feet long and 3 feet wide. Solar panels usually weigh about 40 to 50 pounds. Commercial solar panels are generally larger than residential solar panels at 6.5 feet by 3 feet.



How heavy is a photovoltaic panel on the roof

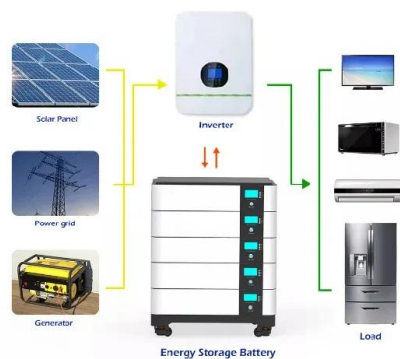


Solar Panels on a Garage Roof in the UK: A 2023 Guide

Calculating solar panel capacity. Now, let's crunch some numbers. The capacity of a solar panel is typically measured in watts (W) or kilowatts (kW). An average solar panel in the UK can ...

Solar Panel Sizes, Dimensions & Weight

The size of a solar panel will directly impact the number of solar cells that can fit onto the panel, which determines how much electricity can be generated from captured solar ...



How Much Does a Solar Panel Weigh? [All You Need To Know]

How Heavy Is a Solar Panel? Are solar panels heavy on a roof?. Depending on the size and kind of solar panel, a solar panel normally weighs between 30 and 40 pounds. ...

How to Install Solar Panels on a Roof: A Step-by-Step Guide

Ascertain the endurance capacity of the roof, as the solar panels are bound to weigh heavy on it. To avoid a collapse, you must inquire into the durability of your roof. Also, ...



[Solar Panel Sizes & Dimensions UK \(2024\)](#)

Many solar panel companies make small solar panels designed specifically for small roofs. You can also opt for high-efficiency solar panels that have conversion rates as high as 23% (compared to the industry average of ...

[Solar panel car roofs: are they a good idea?](#)

Solar panel car roofs are a relatively new phenomenon that promises to use renewable energy to add some charge to the car's batteries. That's 250 square feet of solar panels on IDEAL

...



Is my roof suitable for solar panels? [UK checklist]

This is because a solar panel system usually weighs about 20kg per square metre, which the great majority of roofs can hold. However, flat roofs may not always be strong ...



How Much Does an Average Solar Panel Weigh?

Here are some of the most commonly available solar panel brands, along with their weights and sizes. Is Your Roof Capable of Supporting a Solar Panel? If we want to understand whether a roof can support a solar panel system, first, we ...



Fitting a Solar Panel to your Campervan

Fitting a conventional solar panel to a flat roof: The solar panel is attached to the roof of the campervan using mounting brackets. These are generally made from plastic. A set of 4 corner plastic mounting brackets will usually be sufficient. ...



Everything You Need to Know About Solar Panel Roofs

What is a Solar Panel Roof? When we talk about solar panel roofs, we usually picture traditional solar panels mounted on the roof, capturing sunlight through photovoltaic cells and converting ...



Solar panels on a flat roof explained

These bins are filled with ballast to weigh them down and protect your panels from heavy winds. On average, a 3-bedroom household will take around 12.7 years to break ...





Solar PV panels: Heavy loads , Features

Photovoltaic panels are becoming ever more numerous as prices drop, but they can be a heavy burden on your roof if not carefully installed, says Peter Caplehorn The feed-in tariff and falling costs of PV panels mean that almost ...



Can Solar Panels Be Too Heavy? Weight Limitations of Solar Panel

Mitigating Weight Issues in Solar Panel Installation. There are several strategies that can be used to mitigate weight issues in solar panel installation, including: Choosing ...

A Complete Guide on How to Install Solar Panels on Home Roof

Panel Installation: Place each solar panel onto the stanchions and connect the plug connections for each panel. Ensure a secure fit by fastening the retaining clips to the rails ...



How big are solar panels? Solar panel size and weight

Solar panels generate clean energy and significant savings, but they aren't a one-size-fits-all solution. The size and weight of solar panels vary depending on the make and ...



[How much do solar panels weigh?](#)

Most of the solar panels available on the market, consisting of 60 cells per panel, weigh about 40 pounds (18 kilograms). However, some solar panels can weigh up to 50 pounds (22.6 kilograms), but these are usually ...



Solar Panel Size And Weight: A Comprehensive Guide

To select the right solar panel size, it is important to know the standard solar panel sizes available on the market. Every solar panel consists of solar cells, which are typically 6-by-6 inches.

[Solar Panels on a Flat Roof: 5 Things to Know](#)

When installing solar panels on your flat roof, the resulting product can be tilted or not. There two main factors in the design of a successful solar panel system generating ...



[How to Install Solar Panels on Roof](#)

The first step in the solar panel installation guide is to install the mounts that will support the solar panels. These come in three primary types: pole, roof-ground, and flush mounts . Depending on the chosen mount, you ...



The Ultimate Guide To Flat Roof Solar Panels

When installing Solar panels on a flat roof, this is easily achieved. As the Solar Panels are installed onto a bracket which tilts the panel to around 30 degrees. Flat Roof Solar ...



How close to the edge of your roof can your solar panels go?

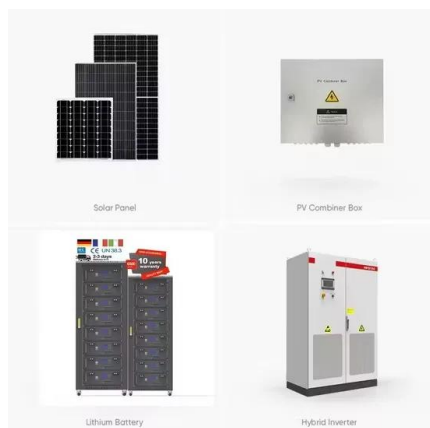
Panels with a minimum distance between the panel and roof edge of 2S where 'S' is the gap between the underside of the panel and the roof surface. So if you have a 50mm ...

Is Your Roof Strong Enough for Solar Panels? , Paradise Energy

When it comes to the exact weight of a solar panel, it will vary from brand to brand and model to model. While solar panels are not extremely heavy, they're built solid to withstand all kinds of ...



- IP65/IP55 OUTDOOR CABINET
- OUTDOOR CABINET WITH AIR CONDITIONER
- OUTDOOR ENERGY STORAGE CABINET
- 19 INCH



Solar Panel Weight Impact on Roof: 5 Key Factors to Consider

3. Local Climate Conditions. Local climate conditions play a significant role in assessing the impact of solar panel weight on a roof. Areas prone to heavy snowfall or high ...



CAN YOUR ROOF HANDLE THE WEIGHT OF SOLAR PANELS?

roofing material. A clay-tiled roof may have a dead load of as much as 27 psf. LIVE LOADS The live load on a roof is the weight of any temporary objects on the roof. Where snow isn't a ...



[How to clean solar panels in six easy steps](#)

Cost of cleaning solar panels "Solar panel cleaning costs between £4 - £15 per panel. The total solar panel cleaning costs will be affected by several factors, the biggest of ...

[Pros and Cons of Solar Panels on a Roof](#)

It's important to consider the pros and cons of solar panels on your roof before you decide if a solar panel installation is right for you. Solar panels offer a compelling mix of environmental benefits and financial ...



How Heavy Are Solar Panels: Understanding the Weight for ...

Solar panels typically weigh between 15 and 50 pounds, with most residential panels settling around 40 pounds.. Various sizes and models differ in weight, but a standard 60-cell ...



Guide to Solar Panel Sizes & Dimensions (November ...

Some common solar panel system sizes include a 3kW solar panel system, a 4 kilowatt solar panel system and a 5kW solar panels. For instance, a typical 2kW solar panel system suited for 1-3 people will need ...



Contact Us

For catalog requests, pricing, or partnerships, please visit:
<https://www.vdbconstruction.co.za>