

How high is the photovoltaic panel tray





Overview

Can solar panels be installed on a flat roof?

Flat roof solar panel mounting systems require a specific approach. To install solar PV on south facing flat roof we would use a ballasted system. This means the roof is not penetrated (which would let in water on a flat roof), and the system is unable to be lifted or tipped over by the wind.

Are renusol console+ ground & flat roof solar mounting trays backordered?

Renusol ConSole+ Ground & Flat Roof Solar Mounting Trays is backordered and will ship as soon as it is back in stock. Experience simplicity, speed, and safety of the ConSole+ Ground & Flat Roof Mounts — an optimal solution for ground-mounted PV modules.

How much ballast does a solar panel use?

The amount of ballast depends on the height and location of the building. Mounting components are included for the Solar Panels. The Solar Panels attach to the mounts using the mounting holes on the back of the module. Please check the measurements below against your panel specification:.

Can solar panels be installed on a trapezoidal metal roof?

Many commercial or outbuildings have metal trapezoidal roof structures. Lucky for these customers, installing Solar PV onto a trapezoidal metal roof is one of the cheapest and fastest means of deploying solar panels. All in all, the panel mounting process for such a roof is very similar to that of an on-roof system.

What is solar panel mounting?

Solar Panel mounting refers to methods of which solar panels are secured into place. Whether you are looking for a solution for a pitched roof, flat roof or field there is a unique mounting system at hand. Different kinds of solar panel mounting allow for design flexibility, varied aesthetics, and greater solar



generation.

How do I install a solar photovoltaic system?

The most efficient way to install a solar photovoltaic system is by using a Heliomotion. Simply because a Heliomotion has innovative sun-tracking technology that enables solar panels to track the sun throughout the day and year. The possibilities for mounting solar are endless.



How high is the photovoltaic panel tray

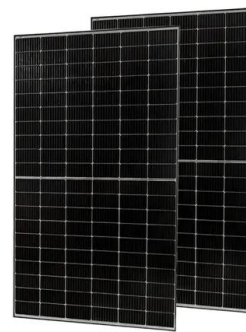


Whether the panels are located in the edge zone, Blowing in

Solar Photovoltaic Panels Solar photovoltaic panels are tested in to EN 61215, which normally tests the panels in isolation (without roof hooks). This standard has a similar pass/fail ...

[Solar Cable Management: The Ultimate Guide](#)

It will also touch on several Snake Tray products designed to optimize cable organization and protection from the solar panel arrays all the way to termination points, like the 407 Series Solar Snake Tray, the Solar Ice Guard, and Solar ...



GSE in-roof systems

GSE brings expert European design and production capabilities to create systems that make solar arrays possible on any building. As a cost-effective system that replaces traditional tiles or ...

How to wire solar panels , Essentra Components UK

From solar panel wiring basics to more complex photovoltaic wiring diagrams: a solar panel wiring guide to series and parallel. Menu. Home; Call Us; 0345 528 0474; ...



[Roof Integrated Solar Panels UK Guide](#)

Integrated solar panels fit tightly inside a tray, which reduces the amount of air ventilation available to cool the solar panel itself. A 4kW solar panel system is a typical demand for a household, which costs about £6,400 ...



[How to Effectively Manage Solar Panel Cables](#)

Aluminum Cable Tray Light Weight, High-Capacity; Cable Runway Steel, High-Capacity; Snake Race Way Secured Raceways; 407 Series Solar Snake Tray; Solar Panel ...



[Renusol Console+ Bundle with Fixings](#)

The Renusol ConSole buckets area ballasted solution for installing PV modules on flat roofs or the ground. The ConSole+ provides an angle of 15 degrees and can be fitted to flat roofs with a pitch of up to 5 degrees.





Renusol Console+ Tub (with fixings) for Ground or Flat ...

Please check the measurements below against your panel specification: - Max module length: 1550mm - 2150 mm - Holes gap - width: 895mm - 1014 mm (you can increase this up to a maximum panel hole gap (width) of 1185mm, by ...



CS + solar panel mounting system for flat roofs

Renusol CS+. the classics for the flat roof. Place Renusol CS+ bucket in position, fill with ballast and screw on the solar module. Done. For nearly 20 years, proven to be simple, proven to be fast, proven to be safe. Here, the plastic trough ...

Renusol Console Mounting Tray for Flat Roof CS+

A mounting structure for any panel up to 1650x990x30mm, installation of solar panels on flat surface, use ballast (tiles, soil, grave) to keep them fixed and avoid drilling holes A simple and ...

1mwh (500kw/1mw)
AIR COOLING
ENERGY STORAGE CONTAINER



Exploring Integrated Solar Panels: Pros, Cons & Costs

The snug positioning of integrated solar panels within a tray reduces airflow, leading to higher operating temperatures and lower efficiency in converting solar energy to electricity.



CS + solar panel mounting system for flat roofs

Products. Pitched roof: Tiles, fibre cement, etc.
VS+ Universal pitched roof system for PV mounting on all roofs; RS 1 Universal clamp for solar modules and middle and end clamps; LC ...



Transporting Solar Panels: How To Protect Your Investment

When carrying a solar panel by yourself, try not to put too much pressure in one area. The best way to carry it is to distribute the weight across your back, arm, and shoulders. Nothing else ...

GSE INTEGRATION INSTALLATION MANUAL Photovoltaic ...

Photovoltaic panel mounting plate and guide
Clamp Fixation Zone Clamp Fixation Zone Water Drainage Guide Water Drainage Zone Graduated overlapping zone Height Tolerance Width ...



[Solar Panel Sizes & Dimensions UK \(2024\)](#)

The most common solar panel sizes for residential installations are between 250W and 400W, while larger commercial installations may use panels up to 500W or more. You can also opt for high-efficiency solar ...



The Complete Guide to Integrated Solar Panels , Eco Experts

Some roof-integrated solar panels don't need trays, as they incorporate weatherproof flashing into the frames. You can expect most integrated solar panel systems ...



[In Roof Solar Panels - Empower Energy Ltd](#)

With a solar panel mounting tray system you have a choice of any conventional roof panel. We recommend GSE roof mounting system. Canadian Solar's high energy generation panels ...

Renusol ConSole+ Ground & Flat Roof Solar Mounting ...

PV Module width between mounting holes: 895 mm - 1015 mm (1085 mm with elongations rails). Material: HDPE, aluminium and stainless steel. Ambient temperature: -30°C to +50°C.



GSE IN-ROOF SYSTEM

(GSE panel support) Roof underlay Top of the PV field Bottom of the PV field Overall presentation of the installation of the kit: Positioning of the support battens GSE frames installation ...



Solar Panel Fitting & Mounting Kits

Part No: REN-CONSOLE-LONG Mounting - Flat Roof Trays This part is made up of the following items: 1 x REN-520075-K ConSole+ (incl. Mounting material and U-Profile) 1 x REN-460196 ...



Solar PV fixings and wind loading

down the panels using ballast such as paving slabs, stones or gravel (held in trays). In this way the solar PV panels are held in position without penetrating the roof. An MCS-registered ...

In-roof solar panels: What you need to know ...

This makes in-roof panels a particularly good fit for older homes whose roofs may struggle to support a large frame-mounted solar array, causing maintenance issues down the line. Low maintenance: The flush position of in-roof panels ...



Integrated Solar Panels: In Roof PV

choice of solar panel is down to the customer - option to use standard solar panels or high efficiency solar panels; robust design allows use in areas with heavy wind and snow loads ...





Roof Integrated SolarTile® , Marley , Solar Roof Tiles

NEW! 410Wp Solar Panel. Larger than Marley's 335Wp panel, the new 410 Solar Photovoltaic Panel delivers a peak power of 410Wp to increase total power from a roof area, As well as ...



How to Protect Solar Panels from Damage Transporting

High Wattage. Bifacial panels. Clearance . Back. Wattage. 370 watt; 380 watt; 390 watt; 400 watt; 405 watt; 410 watt; 415 watt; 425 watt; 540 watt; 550 watt; Brand. See all ...

SOLFIT - Innovative roof-Integrated solar panels

Our patented interlocking design ensures a watertight seal without the need for plastic trays or complicated flashing systems. Perfect for seamless installations and elegant aesthetics. Call ...



Contact Us

For catalog requests, pricing, or partnerships, please visit:
<https://www.vdbconstruction.co.za>