

How is it to work at a wind power station





Overview

How do wind turbines work?

Wind turbines work on a simple principle: instead of using electricity to make wind—like a fan—wind turbines use wind to make electricity. Wind turns the propeller-like blades of a turbine around a rotor, which spins a generator, which creates electricity. To see how a wind turbine works, click on the image for a demonstration.

How does a wind turbine turn mechanical power into electricity?

This mechanical power can be used for specific tasks (such as grinding grain or pumping water) or a generator can convert this mechanical power into electricity. A wind turbine turns wind energy into electricity using the aerodynamic force from the rotor blades, which work like an airplane wing or helicopter rotor blade.

How does a wind farm work?

First let's start with the visible parts of the wind farm that we're all used to seeing - those towering white or pale grey turbines. Each of these turbines consists of a set of blades, a box beside them called a nacelle and a shaft. The wind - even just a gentle breeze - makes the blades spin, creating kinetic energy.

How does a wind generator work?

The energy in the wind turns the blades that are connected to the main shaft, which turns and spins a second shaft, which spins a generator to create electricity. - A machine that is used to make electricity. When the generator head is turned, this energy is converted to electrical energy.

How does a utility-scale wind plant work?

In a utility-scale wind plant, each turbine generates electricity which runs to a substation where it then transfers to the grid where it powers our



communities. Transmission lines carry electricity at high voltages over long distances from wind turbines and other energy generators to areas where that energy is needed.

How does a wind turbine pitch system work?

The pitch system adjusts the angle of the wind turbine's blades with respect to the wind, controlling the rotor speed. By adjusting the angle of a turbine's blades, the pitch system controls how much energy the blades can extract.



How is it to work at a wind power station



Generating electricity guide for KS3 physics students

The wind turns a wind turbine close turbine Revolving machine with blades that are turned by wind, water or steam. Turbines in a power station turn the generators. which generates the electricity

[How does wind energy work?](#)

Wind power is renewable and an unlimited resource - we will never run out of wind. Wind power creates no carbon emissions and is not harmful to the environment. Electricity from wind power is



Wind Power Plants Control Systems Based on SCADA System

The SCADA system can run on the operator workstation in the control room of the wind power plant or it can be displayed on any internet-connected computer accessing the ...

[All You Need To Know About Wind Power , EDF](#)

How does wind energy work? Wind turbines convert kinetic energy from the wind into power. A generator is then used to convert the mechanical power into electricity, ...



Wind Power Station

A Wind Power Station is a facility that generates electricity by connecting wind turbines to the grid through synchronous generators, asynchronous generators, or converters, while considering ...



Wind farms: How they work, types, and advantages

These wind turbines work according to a very simple principle, making the most of the wind's force, which in this case acts as a source of primary energy spinning its blades, it produces kinetic energy and a generator then converts ...



[How do wind turbines work?](#)

How does a wind turbine work? Wind (moving air that contains kinetic energy) blows toward the turbine's rotor blades. The rotors spin around, capturing some of the kinetic energy from the wind, and turning the central ...





Wind power , Description, Renewable Energy, Uses, ...

6 ???· Wind farms are areas where a number of wind turbines are grouped together, providing a larger total energy source. As of 2018 the largest wind farm in the world was the Jiuquan Wind Power Base, an array of more than 7,000 ...



How Do Wind Power Stations Work? A Detailed Look Inside

How Do Wind Power Stations Work? A wind power station, often known as a wind farm, captures wind's kinetic energy and turns it into electricity. Here's an explanation of ...

Advantages and Challenges of Wind Energy

Advantages of Wind Power. Wind power creates good-paying jobs. There are nearly 150,000 people working in the U.S. wind industry across all 50 states, and that number continues to ...



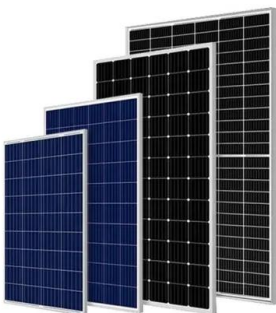
How do offshore wind turbines work? , Ørsted

The wind farm as a power plant. One single wind turbine can generate a few megawatts (MW) of power. That's a lot compared to the power needed to light a home, for example. But it's still ...



How Wind Power Works

The two primary aerodynamic forces at work in wind-turbine rotors are lift, which acts perpendicular to the direction of wind flow; and drag, which acts parallel to the direction of wind flow. Turbine blades are shaped a lot like airplane wings - ...



Wind energy facts, advantages, and disadvantages

How big are wind turbines and how much electricity can they generate? Typical utility-scale land-based wind turbines are about 250 feet tall and have an average capacity of 2.55 megawatts, ...

How a Wind Turbine works

Wind turbines can turn wind into the electricity we all use to power our homes and businesses. They can be stand-alone or clustered to form part of a wind farm. Here we explain how they work and why they are ...



[How do offshore wind turbines work?](#)

The wind farm as a power plant. One single wind turbine can generate a few megawatts (MW) of power. That's a lot compared to the power needed to light a home, for example. But it's still much less than the steam turbine in a ...



Advantages and Disadvantages of Wind Power

Wind power is a domestic energy resource and does not require the importation of fuel resources from other nations as fossil fuels do[sc:2]. This is very good for national security and energy independence, as ...



NGONG POWER STATION, 25MW

Ngong' Power Station is the only wind farm that is connected to the national grid. The farm on the northern part of the Ngong' Hills, near Kenya's capital, Nairobi has a capacity of 25.5MW. The ...

Wind Power Plant: Diagram, Parts, Working

Working of Wind Power Plant. The wind turbines or wind generators use the power of the wind which they turn into electricity. The speed of the wind turns the blades of a rotor (between 10 and 25 turns per minute), a ...



Our Lifepo4 batteries can beconnected in parallels and in series for larger capacity and voltage.



Wind turbine: what it is, parts and working , Enel Green Power

Read all about the wind turbine: what it is, the types, how it works, its main components, and much more information through our frequently asked questions. Windmills of the third ...



Contact Us

For catalog requests, pricing, or partnerships, please visit:
<https://www.vdbconstruction.co.za>