

How many connections can 200 photovoltaic panels connect



✓ 100KWH/215KWH

✓ LIQUID/AIR COOLING

✓ IP54/IP55

✓ BATTERY 6000 CYCLES



Overview

There are two types of inverters used in PV systems: microinverters and string inverters. Both feature MC4 connectors to improve compatibility. In this section, we will explain each of them.

Planning the solar array configuration will help you ensure the right voltage/current output for your PV system. In this section, we explain what these.

Now, it is important to learn some tips to wire solar panels like a professional, below we provide a list of important considerations.

Up to this point, you learned about the key concepts and planning aspects to consider before wiring solar panels. Now, in this section, we provide you.

How many solar panels can a solar inverter connect?

Let's take a look at an inverter with these specifications: For a typical solar panel rated at: You could connect between four (minimum configuration) and fifteen (maximum configuration) panels in series. However, you must also make sure that their combined wattage does not exceed the inverter's power rating.

How to connect 4 solar panels in parallel?

For parallel connection, please connect the positive and negative cables of one module and the second module correspondingly. A parallel connection between 4 solar panels could quadruple the amperage. Voltage and wattage output remain the same. If you're worried about the current being too low, consider wiring the four PV panels in parallel.

How to connect solar panels in series?

Solar connectors can be used to connect solar panels in series, parallel, or series-parallel. Installing them in series is quite simple while installing them in parallel requires an additional component. To connect solar panels in series you just plug the positive connector of a PV module into the negative connector of the next module.



How many solar panels can a MC4 combiner connect?

By using a 4-in-1 MC4 combiner you can connect up to 4 solar panels (or strings of panels) in parallel. This is done by connecting all the positive leads from the 4 PV modules to a single MC4 combiner. Then, the negative leads of the 4 panels are connected together through another MC4 combiner.

How many solar panels can I connect to my grid?

When the grid is operational, you can connect up to 2 x EcoFlow DELTA Pros and get up to 3400W of fast-charging power. Adding a second EcoFlow DELTA Pro allows you to double your solar input capacity to 3200W and install up to 8 x 400W solar panels.

How do I find the best wiring configuration for my solar panel?

Use our solar panel series and parallel calculator to easily find which common wiring configuration maximizes the power output of your solar panels. 1. Find the technical specifications label on the back of your solar panel.



How many connections can 200 photovoltaic panels connect



Connecting Multiple Solar Panels - Series vs. Parallel

To design a solar PV system for any household, it is necessary to consider several parameters like the available solar resource, amount of power to be supplied by the ...

How Do You Connect Solar Panels to a Portable Power Station?

Can You Connect More Than One Solar Panel to a Portable Power Station? Most portable power stations only allow you to connect one solar panel at a time. Premium options ...

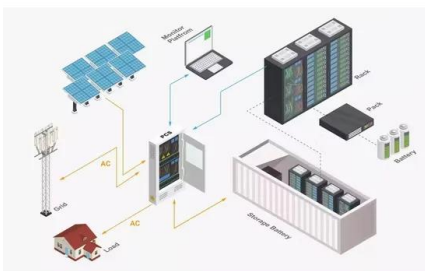


A Guide Between Series and Parallel Connections

Learn about series, parallel, and series-parallel connections in solar panel systems. Understand why each connection type is used and how to set up your system accordingly. Discover the benefits and considerations of each ...

Connecting Photovoltaic Panels Methods and Best Practices

The wiring diagram of photovoltaic panels must take into account many technical factors, including the power and electrical parameters of individual panels. Generally, connecting ...



Solar String Expansion. Panels Connection Parallel vs ...

Solar Panel Connection Calculator. Use this calculator to see how varying the types of panels you connect and the strings affect the expected voltage and current of the system.

How To Connect Portable Solar Panels to an EcoFlow Portable ...

In this video, we'll show you how to connect and set up portable solar panels. We'll cover chaining your solar panels in series, linking them in parallel, an



The Complete Guide for Solar Panel Connectors

By using a 4-in-1 MC4 combiner you can connect up to 4 solar panels (or strings of panels) in parallel. This is done by connecting all the positive leads from the 4 PV modules to a single MC4 combiner. Then, the negative ...



How To Connect Any Solar Panel To Jackery Explorer ...

A series connection does usually not require any extra adapters, since you just need to grab the positive connector from one panel and connect it to the negative connector on the second panel. Can you connect a solar ...



How To Connect/Combine Two Or More Goal Zero Solar Panels

The Boulder 200 solar panels come with an Anderson Power Pole output, so if you want to combine two or more you need a Goal Zero Anderson combiner. Sure, even ...

Connecting Solar Panels in Series or in Parallel?

Typically, the goal is to achieve the right balance of producing volts and producing amps by wiring panels together in series and in parallel -- not either/or. If your residential solar installation will have more than 3 or 4 PV ...



Everything You Need To Know About Solar Panel Wiring

From the inverter, connect it to the home's AC power box, and, if you're installing a grid-tied system, to the electrical grid. Now that we have the types of solar panel connections down, ...



Solar String Expansion. Panels Connection Parallel vs Series

String 1. Panels Connection

TypeSeriesParallelNumber of PanelsVoc (V)Isc (A)Remove StringAdd String. Connecting Solar Panels in Strings. Connecting multiple solar ...

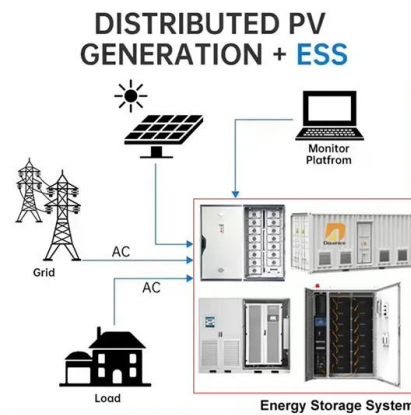


How to connect a PV solar system to the utility grid

The purpose of this article is to give you a basic understanding of the concepts and rules for connecting a solar panel system to the utility grid and the household electrical box or meter. ...

Mixing solar panels - Dos and Don'ts

Connecting in series means joining the positive terminal of a solar panel to the negative terminal of the next solar panel until eventually you are left with one free positive and one free negative ...



Solar Panel Connection

Wiring multiple solar panels in series means you are wiring each panel to the next. This solar panel connection creates a string circuit. The wire that runs from the solar panel's negative ...



How to Wire Two or More Solar Panels in Series

Well, to better understand the series connection, let's start with some theory on the solar panel! A solar panel (formally known as PV module) is an optoelectronic device made from multiple ...



How Many Solar Panels Can I Connect to an Inverter?

How many solar panels can I connect to an inverter? What size inverter do I need? Can you connect an inverter directly to a solar panel? Of course, it's always best to ask ...

Connect Solar Panels To An Inverter: A Step-by-Step ...

Series connections are useful when you need to increase the voltage of your solar panel system, such as when you have a long distance between your panels and your inverter. Parallel Connection A parallel connection involves ...



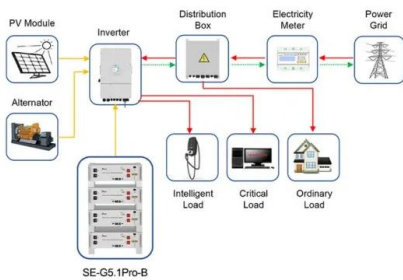
[Solar Panel Series & Parallel Calculator](#)

How to Calculate Solar Panel Output of Series & Parallel Wiring Configurations. Here's how to calculate the power output of your solar array, regardless of how you're wiring your panels together -- and regardless of ...



How to Connect Solar Panels in Series and Parallel

Absolute interconnected power = 150W + 150W + 150W + 150W = 600W. Having said that when panels are attached in series, one of the panel may carry a rated power below the other panel, because of the lower ...



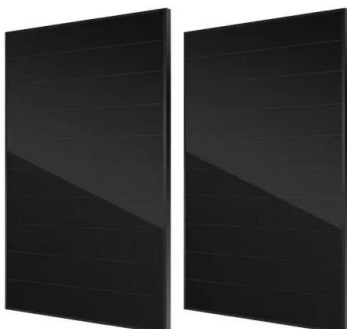
Application scenarios of energy storage battery products

Anker Portable Power Stations: Connect Any Solar Panel

Can I Connect Any Solar Panel To An Anker Power station? you need to purchase this adapter (click to view on Amazon) to make the connection. If the solar panel ...

How to Connect Solar Panel to Inverter for Pro ...

Here are some commonly asked questions on how to connect solar panel to inverter. Can a 12V Inverter Be Directly Connected to a Solar Panel? Yes, a 12V inverter can be directly connected to a solar panel. ...



How Many Solar Panels Can a Charge Controller Handle?

You can connect two or more charge controllers for large battery banks. That is, you may use a solar panel that has a higher capacity than what the manufacturer recommends. For example, ...



EcoFlow Portable Power Stations: Connect Any Solar Panel

While EcoFlow produces its own line of solar panels, many users wonder if they can connect third-party panels to their EcoFlow power stations/solar generators. The answer ...



Ultimate Guide to Solar Panels in Series vs. Parallel

Jackery portable solar panels' charging efficiency is up to 25%, which uses solar energy to its fullest potential. It is simple to connect your power station and solar panel. Connect your portable power station's DC input to the ...

The Difference Between Wiring Solar Panels in Series or Parallel

Series Solar Panel Wiring Voltage and Amps in Series. To wire solar panels in series, connect the positive terminal on the first panel to the negative terminal on the next, and ...



How Many Solar Panels Can I Connect To My Solar Generator?

How many solar panels can I connect to my solar generator? In this article we aim to give you the answer and once and for all, lay this question to rest. Elite 200 V2 2,600W , 2,073.6Wh



How Many Solar Panels Can I Connect to an Inverter? A ...

Series Connection Example: Three panels, each with 30V and 10A. Connect two sets in series (totaling 60V per set), then connect these sets in parallel (keeping within the ...



Series Connected Solar Panels

Using the same three 12 volt, 5.0 ampere pv panels as shown above, we can see that when they are clearly connected together in a series string, the combined string produces a total of 36 ...



Connecting Solar Panels Together for Increased Power

We can see that the solar panel rated at 9 volts, 5 amps, will only use one fifth or 20% of its maximum current potential reducing its efficiency and wasting money on the purchase of this ...



How Many Solar Panels, Batteries & Inverter Do I Need for Home?

Series Connection of Solar Panel with Auto UPS System; Parallel Connection of Batteries with Solar Panel; Rating of Charge Controller. As we have calculated above that the ...





Bluetti Portable Power Stations: Connect Any Solar Panel

Can I Connect Any Solar Panel To A Bluetti Power station? (200 max) EB55 (537wh) XT60: 12-28V, 8A (200W max) EB70S (716wh) 8mm: 12-28V, 8A (200W max) PS72 ...



How Many Solar Panels Can I Connect to an Inverter? A ...

In this guide, we will explore several factors that determine how many solar panels can be connected to an inverter: Inverter Specifications: Understanding the technical limits and capabilities of your inverter. Wiring ...

Contact Us

For catalog requests, pricing, or partnerships, please visit:
<https://www.vdbconstruction.co.za>