

# How many kw does a 20 square meter photovoltaic panel equal





## Overview

---

The first factor in calculating solar panel output is the power rating. There are mainly 3 different classes of solar panels: 1. Small solar panels: 50W and 100W panels. 2. Standard solar panels: 200W, 250W, 300W, 350W.

If the sun would be shining at STC test conditions 24 hours per day, 300W panels would produce 300W output all the time (minus the system 25% losses). However, we all know that the sun.

Every electric system experiences losses. Solar panels are no exception. Being able to capture 100% of generated solar panel output would be perfect.



## How many kw does a 20 square meter photovoltaic panel equal

---



### How Much Energy Does A Solar Panel Produce? , EnergySage

Most home solar panels that installers offer in 2024 produce between 350 and 450 watts of power, based on thousands of quotes from the EnergySage Marketplace. Each of ...

### How to Calculate Solar Panel KWp (KWh Vs. KWp + Meanings)

Find the total solar panel area (A) in square meters by multiplying the number of panels with the area of each panel. 2. How to Calculate Solar Panel kW. A kilowatt (kW) ...



### How much energy do solar panels produce for your home?

Size of one solar panel (in square metres) x 1,000. That figure x Efficiency of one solar panel (percentage as a decimal) How much electricity does a 1 kW solar panel system produce? ...

### Calculate Solar Panel kWp & KWh (KWh Vs. KWp + Meanings)

A simple formula for calculating solar panel output is: Average hours of sunlight x solar panel wattage x 75% (for dust, pollution, weather) = daily wattage output. So, if you're ...



### How Much Solar Power Can My Roof Generate? , EnergySage

Assuming all of the roof space you've got is usable for solar (which, again, usually isn't the case), that's 42 panels (850 square feet divided by 20 square feet per panel). ...



### Standard Solar Panel Sizes And Wattages (100W-500W Dimensions)

A typical 100-watt solar panel is 41.8 inches long and 20.9 inches wide. It takes up 6.07 sq ft of area. How many watts per square foot can a solar panel generate? Size Solar System = ...



### [How to Calculate Solar Panel KWp \(KWh Vs. KWp\)](#)

To calculate the KWp (kilowatt-peak) of a solar panel system, you need to determine the total solar panel area and the solar panel yield, expressed as a percentage. Here are the steps involved in this calculation: 1. ...





### How Many kWh Does a Solar Panel Produce?

This has an equal measure to a 7.5 kW solar power system. How Many Solar Panels Do I Need for 100 kWh per Day? If you use a 330-watt solar panel, you will need 20 ...



### Solar Panel Sizes and Wattage Explained

Solar panel size per kilowatt and wattage calculations depend on PV panel efficiency, shading, and orientation. the required solar panel output with Buffer (Watts) =  $6 \text{ kW} \times 1.20 = 7.2 \text{ kW}$ . It's often seen that larger ...

### **How Much Power Does A Solar Panel Produce? (2024)**

The average solar panel has a power output rating of 250 to 400 watts (W) and generates around 1.5 kilowatt-hours (kWh) of energy per day. Most homes can meet energy ...



### **How much Space do I need for Solar Panels? UK Guide 2024**

Factors Affecting Solar Panel Output. Wattage Output: The output capacity of the panels. Panel Orientation: South is optimal, but anything from east to west through south is ...



## Solar panel output: How much electricity do they produce?

Check out all the need-to-know things of solar panel output here! The Eco Experts . Solar Panels. Solar Panels. Back. Solar Panels. Back; Solar Panel Grants Solar ...



Test certification  
CE FC



## [How much energy does a solar panel produce?](#)

On average, solar panels will produce about 2 kilowatt-hours (kWh) of electricity daily. That's worth an average of \$0.36. Most homes install around 15 solar panels, producing an average ...

## [How to Calculate Solar Panel kWh](#)

Multiply the size of one solar panel in square meters by 1,000 to convert it to square centimeters. Example: If a solar panel is 1.6 square meters, the calculation would be  $1.6 \times 1,000 = 1,600$  square centimeters. 2. ...



## [Solar Power per Square Meter Calculator](#)

A solar power per square meter calculator takes details regarding these factors and then gives the accurate output generated by the solar panel per square meter. After this, ...



## [Solar Panel Output Calculator UK 2024](#)

If you're planning to cut your energy bills and help the climate by getting solar panels on your roof, you'll want to know exactly how much electricity they can produce and ...



## **Solar Panel Sizes And Wattage , Sizing, Dimensions & Weight**

Watt (W) and kilowatt (kW): a unit used to quantify the rate of energy transfer. One kilowatt = 1000 watts. Solar panels' rating in watts specifies the maximum power ...



## **Guide to Solar Panel Sizes & Dimensions (November ...**

Discover which solar panel sizes and dimensions are the most common in the UK, Most modern rooftops have a rafter load of 140kg per square metre. For reference, solar panels usually weigh approximately 20kg ...



## [How Much Energy Does a Solar Panel Produce?](#)

Okay, now the fun part: a look at how much energy the same solar panel could produce in a few scenarios. Clear day vs overcast day: At noon on a cloudless day, a 1.6 square meter solar panel with a 20% efficiency ...



### How Many Solar Panels Do I Need To Power a House?

Finally, pick a solar panel power rating. The final variable is how much electricity each solar panel can produce per peak sun hour. This is called power rating and it's measured in Watts. Solar panel power ratings ...

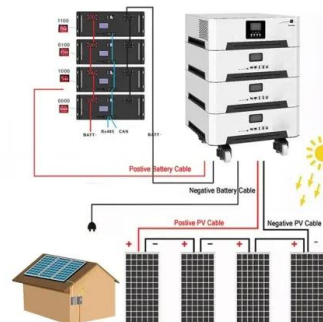


### Average Solar Panel Output Per Day: UK Guide

How Much Electricity Does a 1 kW Solar Panel System Produce? Average solar panel output per square metre. In the UK, one of the more common solar system sizes is a four kW system with 16 separate ...

### How much electricity do solar panels produce? [UK, 2024]

The average temperature coefficient for a solar panel is  $-0.32\%/^{\circ}\text{C}$ , which means for every degree above  $25^{\circ}\text{C}$ , a solar panel's output falls by a miniscule  $0.32\%$ . ...



### How Much Energy Does A Solar Panel Produce? - Forbes Home

While solar panel systems start at 1 KW and produce between 750 and 850 Kilowatt hour (KwH) annually, larger homes and bigger households typically want to be on the ...



## Solar Rooftop Calculator: How Many Solar Panels Can ...

Now, by average solar panel wattage per square foot, we can put a 10.35kW solar system on an 800 sq ft roof. This is how many solar panels you can put on this roof: 48 Of 400 Watt Solar Panels:  
1600 Square Feet Roof: 20.700 kW ...



## How Much Electricity Does A Solar Panel Produce?

This article covers how much electricity a solar panel produces and the other factors that can affect the amount of energy your solar panels can produce but assuming an ...

## Contact Us

---

For catalog requests, pricing, or partnerships, please visit:  
<https://www.vdbconstruction.co.za>