

# **How many meters is the diameter of the photovoltaic panel cement column**





## Overview

---

What is the size of a solar panel?

The size of a solar panel is measured in watts, which indicates the amount of power it can generate. The most common solar panel sizes for residential installations are between 250W and 400W, while larger commercial installations may use panels up to 500W or more.

How much space does a 350W solar panel take up?

In the UK, a standard 350W residential solar panel is around 1.89m long, 1m wide and 3.99cm thick and contains approximately 60 solar cells. This means that a 350W solar panel will take up around 1.89m<sup>2</sup> of roof space – although more efficient panels can be smaller but produce the same amount of power.

What is solar panel wattage?

.

Is solar panel size the same as solar array size?

As such, solar panel size shouldn't be confused with solar array (or, if you prefer, solar system) size.

What size solar panel do I Need?

The most common solar panel sizes for residential installations are between 250W and 400W, while larger commercial installations may use panels up to 500W or more. The size of a solar panel affects its efficiency, with larger panels generally being more efficient but also more expensive and heavier.

What is a photovoltaic (PV) solar panel?

This solar panel is a photovoltaic (PV) panel that offers several advantages over the standard solar panel size, making them a good alternative. Some of the benefits of this solar panel type include: Sleek weight and flexibility – because of its weight, this solar panel is easier to install in different locations.



How do I choose the right solar panel size?

The size of a solar panel should be chosen based on factors such as available space, energy needs, and budget. Solar panels can be combined to create larger systems, and the size of the system will depend on the energy needs of the user. Choosing the right size of the solar panel is important for maximizing energy production and cost savings.



## How many meters is the diameter of the photovoltaic panel cement

---



### Solar Rooftop Calculator: How Many Solar Panels Can Fit On ...

Number Of Solar Panel By Roof Size Chart. We have calculated how many of either 100-watt, 300-watt, or 400-watt solar panels you can put on roofs ranging from very little 300 sq ft roof to ...

### What is the best foundation for a ground-mount solar array?

U.S. solar panel manufacturers; Solar Classrooms; Suppliers; Videos; Webinars / Digital Events; Whitepapers; 2024 Leadership. 2023 Winners; 2022 Winners; Subscribe;



### Solar Panel Size & Weight Guide [+ Charts] - Solartap

Solar panel dimensions depend on how many cells are in each panel, as cell size is pretty uniform across all brands of residential solar panels. Each cell is usually 156 ...

### [Solar Panel Sizes, Dimensions & Weight](#)

You might also hear of 120 half-cell panels (equivalent size to 60 cells) or 144 half-cell panels (equivalent size to 72 cells). These half-cell panels, as you might suspect, have their solar cells cut in half.



### Solar Panel Calculator

To find the solar panel output, use the following solar power formula:  $\text{output} = \text{solar panel kilowatts} \times \text{environmental factor} \times \text{solar hours per day}$ . The output will be given in ...

### [Solar Panel Watts Per Square Meter Explained](#)

Learn how to measure solar panel efficiency using solar panel watts per square meter with this comprehensive guide. Skip to content. Solar Earth Inc. SAVE 90%. GET A FREE ESTIMATE ...



### Ground Preparation and Foundation for Solar Panel ...

9 Case Study: Ground Preparation and Foundation for a Residential Solar Panel Array. 9.1 Background; 9.2 Project Overview; 9.3 Implementation; 9.4 Results; 9.5 Summary; 10 Expert Insights From Our Solar Panel Installers About ...





### How Many Solar Panels Do I Need? Solar Panel Calculator

The UK saw an average of 4.7 sunlight hours during 2018. Because the number of sunlight hours varies according to the month it's a good idea to get an average for the year.



### Ultimate Guide to Solar Panel Sizes, Dimensions & How Many Solar Panels

What Are the Standard Solar Panel Sizes? When it comes to standard solar panel sizes, like 300w or 500w, it is essential to determine the size of a solar panel system ...

### [Concrete Square Column Calculator](#)

The concrete square column calculator exactly as you see it above is 100% free for you to use. If you want to customize the colors, size, and more to better fit your site, then pricing starts at ...

**LFP12V100**



### Solar Racking Made Simple: What You Need to Know About

Installing a solar energy system can be a challenging task. A home solar panel installation will include up to or more than a thousand parts so gathering the right component parts can take a ...



### How much Space do I need for Solar Panels? UK Guide 2024

Find out how much electricity you can generate per square foot or meter of roof space with solar panels in the UK. Click to know more. (cm), or metres (m). The physical ...



### How many solar panels do I need? Our guide to sizing ...

When translating your energy needs into solar panel numbers, remember that a typical 350W solar panel produces around 265kWh per year in the UK. So if you use 2,650kWh of electricity annually, you can theoretically ...

### [Concrete Volume Calculator for Columns](#)

$V = \pi * D^2 \div 4 * h$  where V = concrete volume in cubic feet pi = 3.14159 .. d = diameter h = height Example calculation: column height = 6 metres diameter = 300mm = 0.3 metres needed ...



### How much electricity do solar panels produce? [UK, 2024]

The average temperature coefficient for a solar panel is -0.32%/°C, which means for every degree above 25°C, a solar panel's output falls by a miniscule 0.32%. ...



### Solar Panel Sizes & Dimensions UK (2024)

The most common solar panel sizes for residential installations are between 250W and 400W, while larger commercial installations may use panels up to 500W or more. The size of a solar panel affects its efficiency, ...



### Solar panel sizes and wattages , The Independent

\*Based on the average UK sunlight hours of 4.3 per day across all 12 months in 2023 with a 0.75x modifier to account for variables such as suboptimal panel orientation, low ...



### Solar Panel Sizes and Weights

A typical solar panel size is about 1 metre wide and can be 1.6 m to 2 m long, while the thickness usually ranges between 3 to 4 cm. Typical solar panel weight ranges from 19 kg to 21 kg.

### Home Energy Storage (Stackble system)



### What is the best foundation for a ground-mount solar ...

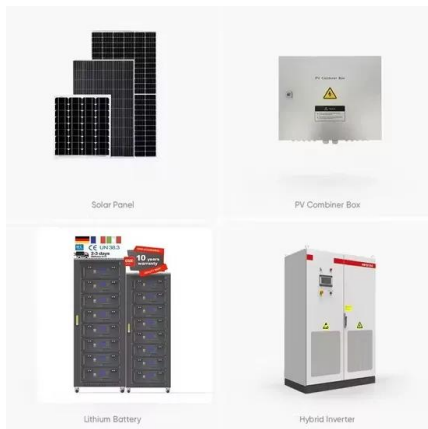
Soil composition, local climate conditions, module size, array tilt and other features of the proposed site and array influence what makes a ground-mount foundation the right fit for an individual solar project.





### How many solar panels do you need to power a UK ...

The best way of knowing exactly how much energy you use at home is to install a smart meter. According to the Renewable Energy Hub, domestic solar panel systems usually range in size from around to 1 kW to 5 ...



### Size of Standard Solar Panel: Solar Sizing Calculator Finds How Many

Size of Standard Solar Panel: Size of Solar Panel for 1Kw. A 1 kW solar system consists of multiple solar panels that make up 1000 watts. The average price for that is \$700 ...

### Removal of Hardened Cement Deposited on PV Panels and Its ...

many other man-made and natural debris get deposited on module. A. Causes of deposition. Fig. 1. Construction near PV power plant. F. ig. 2. Hardened cement on solar panel. At the site ...



### Solar Panel Sizes & Dimensions (UK): Simply Explained

When it comes to investing in solar energy, choosing the right solar panel size is bottom-line. Indeed, it's not just about finding something that fits your roof. Approximately 1.95 square ...



## How Many Solar Panels Do I Need To Power a House?

Finally, pick a solar panel power rating. The final variable is how much electricity each solar panel can produce per peak sun hour. This is called power rating and it's ...



## Sizing Solar Structure Components in Solar Panel ...

Legs serve as the framework for solar panel arrays; they are sometimes referred to as support posts or columns. The process of sizing legs is figuring out the right height, diameter, and spacing to hold the panels' weight ...

## Contact Us

---

For catalog requests, pricing, or partnerships, please visit:  
<https://www.vdbconstruction.co.za>