

How many photovoltaic panels should be installed in 20 square meters





Overview

In terms of roof size, you will need a roof of around 20 square metres to install 10 panels on average. How much space do solar panels take up?

As a rule of thumb across the UK, your solar array will produce 760 kWh for every 1 kW of panels on your roof. Here's a general idea of how much space different sized solar panel systems take up (in square metres - m²): *based of the average solar panel size of two square metres.

What size solar panels do I Need?

Solar panels usually have an area of 1.3-1.7m², with 1.6m being the most common size. To calculate the required roof space: Multiply the number of solar panels by the average panel size in square meters. Compare the resulting area against your available roof space. For example, using the solar panels calculation from the previous section:.

What size roof do I need to install solar panels?

In terms of roof size, you will need a roof of around 20 square metres to install 10 panels on average. But please bear in mind that you will need to consult the assistance of a solar panel installer to get a more accurate idea. Should you install small or large solar panels?

.

How many solar panels does a home need?

How Many Solar Panels Does Your Home Need?

The quantity of solar panels a household requires typically ranges from 4 to 18 photovoltaic panel modules. Adjusting this number to ensure a profitable installation depends on the residence's yearly electricity consumption.

How many solar panels are needed for a 5kw Solar System?



If you're wondering how many panels are needed for a 5kW solar system, then the answer is between 8 - 13 panels, (either 350W or 450W). This, however, is only an estimate on paper, a home running only on solar power may need an even more powerful system to compensate for weather disruptions, family growth or property expansions.

How much power does a large solar panel provide?

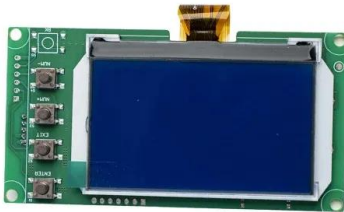
Risen Energy offers large solar panels at 3.1 metres that can provide 670W of power - for reference that is twice as much as standard-sized panels. Please note: large solar panels are not always necessary, they are certainly not always more efficient and may be more difficult to install. How heavy are solar panels?



How many photovoltaic panels should be installed in 20 square met

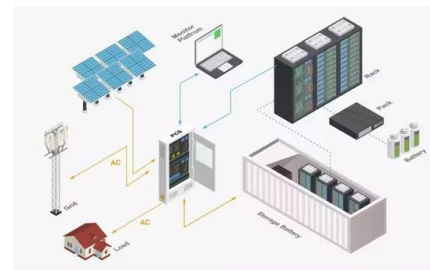
[Solar Power Per Square Meter Calculator](#)

Table - Compare solar panel power production for cities in US and UK. then the fixed angle they should be installed at depends on your location. That could be 20-50°. 4. ...



[Solar Power per Square Meter Calculator](#)

Depending on the Slope of the house, the angle of the solar panels should be between 20° and 50°. Direction: Suppose you live in the Northern Hemisphere. In such a case, ...



Solar Panel kWh Calculator: kWh Production Per Day, ...

3. Solar Panel System Losses (20% - 30%) Every electric system experiences losses. Solar panels are no exception. Being able to capture 100% of generated solar panel output would be perfect. However, realistically, every solar panel ...

How Many Solar Panels Do I Need? , Try Our Calculator

Here's a general idea of how much space different sized solar panel systems take up (in square metres - m2): So, if you live in an area that doesn't get a lot of sun, you ...



How Many Solar Panels Do I Need? Calculate for Your ...

Some homeowners oversee their solar panel installation to cover their future needs, like electrifying their home or purchasing an electric vehicle. 177 square feet. 15. 6 kW. 265 square feet. 20. 8 kW. 353 square feet. 25. 10 kW. 442 ...



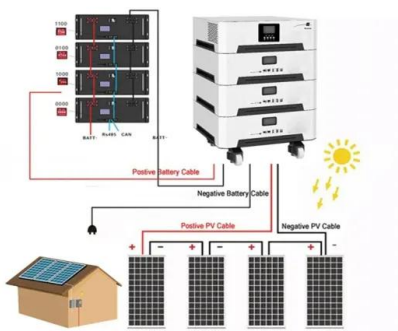
Photovoltaic (PV) Solar Panels

Very few panels have been installed for long enough to need replacing because of diminished performance. In the UK, more panels were installed between 2006 and 2008 than in all ...



Solar Panel Sizes, Dimensions & Weight

What are the different solar panel sizes and how many can you fit onto your roof? Our guide gives you the information you need. 20: 38 m 2: 8kW: 24: 45 m 2: 10kW: 30:





How much Space do I need for Solar Panels? UK Guide 2024

Factors Affecting Solar Panel Output. Wattage Output: The output capacity of the panels. Panel Orientation: South is optimal, but anything from east to west through south is ...



Solar Panel Calculator , Solar PV System Calculator

The more directly a solar panel faces the sun, the more light the panel will receive, the more power it will produce. 20.54m sq: 2.94kWp: 2524 kWhrs: Panel Orientation: No. Panel ...



How much energy do solar panels produce for your home?

2. Solar panel output per month. For a monthly total, calculate the daily figure then multiply it by 30: $1.44 \times 30 = 43.2$ kWh per month; 3. Solar panel output per square metre. The most ...



How Much Solar Power Can My Roof Generate? , EnergySage

850 square feet of usable roof space for solar: The average U.S. roof is about 1,700 square feet. You should never put panels on northern roof planes. So with a north/south ...



How to Calculate the Surface Area Required by Solar Panels

Suppose the area is A square meters then the equation becomes. $1000 \times 0.20 \times A = 25000$. $200 \times A = 25000$. $A = 25000 / 200$. $A = 125$ square meters. This is for panels lying ...



Solar Panel Sizes And Wattage , Sizing, Dimensions & Weight

Modern homes can support more than 14 to 20kg of weight per square metre. Roofs that are maintained can carry about 18 kg of typical solar cells. Roofs that are ...

Guide to Solar Panel Sizes & Dimensions (November 2024)

Some common solar panel system sizes include a 3kW solar panel system, a 4 kilowatt solar panel system and a 5kW solar panels. For instance, a typical 2kW solar panel ...



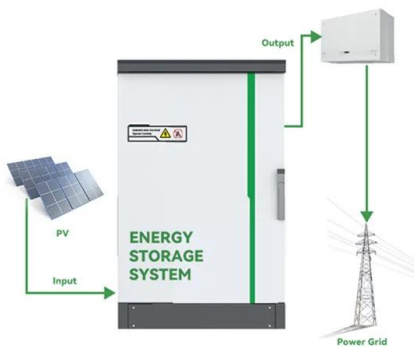
How Many Solar Panels Do I Need To Power a House?

Finally, pick a solar panel power rating. The final variable is how much electricity each solar panel can produce per peak sun hour. This is called power rating and it's measured in Watts. Solar panel power ratings ...



How many solar panels do I need? Our guide to sizing up your ...

Find out how much solar panel installation could cost you by taking our quick survey below. How many solar panels does the average UK house need? The average ...



Solar panel output: How much electricity do they produce?

A solar panel works best when installed on a south-facing roof at a 35-degree angle. However, solar panels can still produce a decent amount of power on an east-facing or ...

How many solar panels can I fit on my roof?

Most solar panels are 250 watts; therefore to get a 3.5kW (or 3500 watts) system you would need 14 panels. 250 watt solar PV panels are all pretty much a standardised size - ...



Solar Rooftop Calculator: How Many Solar Panels Can Fit On ...

Now, by average solar panel wattage per square foot, we can put a 10.35kW solar system on an 800 sq ft roof. This is how many solar panels you can put on this roof: If you only use 100-watt ...



Standard Solar Panel Sizes And Wattages (100W ...

How many watts per square foot can a solar panel generate? Dividing the specified wattage by the square footage of the solar panel will give us just this result: The average solar panel output per area is 17.25 watts per square foot. ...



Commercial and Industrial ESS

Air Cooling / Liquid Cooling

- Budget Friendly Solution
- Renewable Energy Integration
- Modular Design for Flexible Expansion



[How Many Solar Panels Do I Need in the UK?](#)

Most roofs can easily manage 10kg per square meter, while the average weight load of a solar panel on a slanted roof is about 1.3kg per square meter (2.3kg per m2 on a flat roof). While they can weigh up to 18kg to 20kg, ...

[How to Calculate Solar Panel kWh](#)

Multiply the size of one solar panel in square meters by 1,000 to convert it to square centimeters. Example: If a solar panel is 1.6 square meters, the calculation would be $1.6 \times 1,000 = 1,600$ square centimeters. 2. ...



Size your solar system

One residential solar panel is often around 1.7 m² in area. A common 6.6 kW system might take up 29 - 32 m² of roof space, depending upon the rated capacity of the panels. Panels can be ...





How Many Solar Panels Do I Need in the UK?

According to their most recent data (as of September 2023), homeowners who install solar panel systems with a size of 0-4 kW are paying an average price of £2,365 per ...



How Many Solar Panels Do I Need For My Home?

Ensure that your roof has sufficient space to install the solar panels. Typically, each standard solar panel occupies about 1.6 square meters. Therefore, installing 20 solar panels requires at ...

How Many Solar Panels do I Need? A 2024 Guide for the UK

Can I build my own Solar Panel System UK? - DIY Solar; Getting Solar Panel Quotes in the UK 2024; How much Space do I need for Solar Panels? UK Guide 2024; The ...



How Many Solar Panels Do I Need For My UK Home? 2024 ...

When calculating solar panel needs, you should consider the following points: you will need to factor in the size of your roof or the area of the property where you want to install your panels. ...



How to calculate how many solar panels you need.

2,500 sq. feet: 11,775 kWh: 20: specific add-ons will dramatically change monthly energy use and can impact the size of the solar panel system you should install. For example, pairing your ...



Display screen
Linux operation system
quad-core processors
smooth and stable system

LPSB48V400H
48V or 51.2V



[Solar Panel Sizes & Dimensions UK \(2024\)](#)

The size of a solar panel should be chosen based on factors such as available space, energy needs, and budget. Solar panels can be combined to create larger systems, and the size of the system will depend on ...

Contact Us

For catalog requests, pricing, or partnerships, please visit:
<https://www.vdbconstruction.co.za>