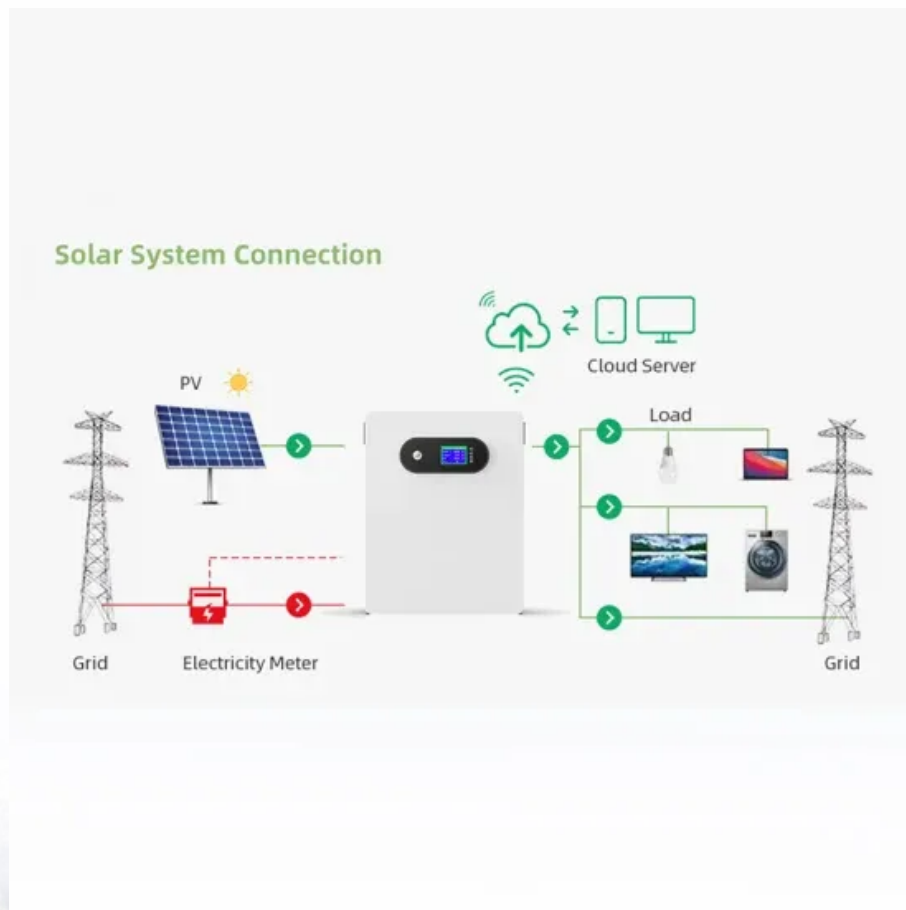


# How many square meters are there for a 3 000-watt photovoltaic panel





## Overview

---

What is solar panel watts per square meter (W/M)?

Solar panel watts per square meter (W/m) measures the power output of a solar panel based on its size. Compare solar panels to see which generates most electricity per square meter. A higher W/m value means a solar panel produces more power from a given area. This can help you determine how many solar panels you need for your energy needs.

How much energy does a solar panel use per square meter?

On average, you can expect around 850 to 1,100 kilowatt-hours (kWh) of solar energy per square meter (approximately 10.764 square feet) annually. Panel Efficiency: Solar panel efficiency determines how well the panel converts sunlight into electricity. The efficiency of commercially available solar panels is around 15% to 24.5%.

How much power does a 400 watt solar panel produce?

A 400 W solar panel can produce around 1.2-3 kWh or 1,200-3,000 Wh of direct current (DC). The power produced by solar panels can vary depending on the size and number of your solar panels, the efficiency of solar panels, and the climate in your area. How many solar panels are needed to run a house?

.

How many solar panels kWh do I Need?

You need 24 to 25 solar panels kwh to get a solar panel output of 1000 kWh. The solar panel calculator helps to figure out how many solar panels you need and determine the right system size and roof area requirements for your system.

How much power does a small solar panel generate?

Although, please note that they will not generate as much power as standard-



sized solar panels, but that goes without saying. In terms of power, small solar panels typically start at around 50 watts but can go all the way up to 150 watts. Recommended solar reading:.

How many watts can a 1m<sup>2</sup> solar panel produce?

Imagine a solar panel has a conversion efficiency of 100% i.e. it converts all the solar energy into electrical energy then all you would need is a 1 m<sup>2</sup> solar panel to produce 1000 Watts of electrical energy :). More than 20 years of experience in various organizations in Pakistan, the USA, and Europe.



## How many square meters are there for a 3 000-watt photovoltaic pa



### Solar Panel Calculator

One square meter can produce about 200 Watts and the cost of the solar system is about \$1 to \$2 per Watt depending upon how much backup you want. Solar panels can produce peak power for about 5 hours daily. With ...

### How Much Power (Watts) does a Solar Panel ...

Usually, the typical amount can be 1,000 watts of sunlight per square meter of the panel. As we have mentioned before, average domestic solar panels hold a capacity ranging from 1,000 watts to 4,000 watts. Location; Location is ...



### Solar Panel Output Calculator UK 2024

Learning about solar panel output can also help you pick the right-sized system, reducing solar panel costs in the long run. The top eight myths about solar panels Despite ...

### How Many Solar Panels Do I Need? , Try Our Calculator

Just fill in the solar panel calculator at the top of the guide with your number of bedrooms and where you live, and we'll tell you how many solar panels you'll typically ...



### Standard Solar Panel Sizes And Wattages (100W-500W ...

Whenever you want to find out what the standard solar panel sizes and wattages are, you encounter a big problem:.. There is no standardized chart that will tell you, for example, "A typical 300-watt solar panel is this long and this wide.". If ...



### How Many Solar Panels Do I Need For a 3000 Watt Inverter?

Inverter watt load / solar panel watt output + 10% = solar panel array. In this example we will use a 300 watt solar panel:  $2500 / 300 = 8.3$ .  $8 \times 300 \text{ watts} = 2400 \text{ watts}$ . Add 10% and you get ...



### [Solar Panel Output Calculator](#)

How much power or energy does solar panel produce will depend on the number of peak sun hours your location receives, and the size of a solar panel. just to give you an idea, one 250-watt solar panel will produce about ...





### Lumens Calculator: How Many Lumens Do I Need for a Space?

There's an easy way to learn how much light you need for a room. This free calculator can help you light any space to perfection! #lighting The reference point: A ...



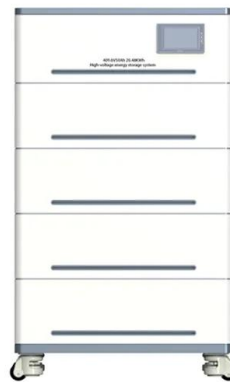
### Watt Calculator

What is a Watt-A Watt is a unit of energy, 1000 Watts = 1 kiloWatt (kW). Most electric products have a kW/hour (kWh) rating, eg an average electric kettle is rated at 1.2kW (1200 watts) or a ...



### How Many Solar Panels for 3000 Watt Inverter?

So, how many solar panels do I need for a 3000 watt inverter? Start by identifying the wattage of the solar panels you plan to use. For instance, if you choose 300-watt panels, ...



### How much electricity do solar panels produce? [UK, 2024]

In the south of England there is an average of 128.4 watts per square metre (m<sup>2</sup>), whilst in the northwest of Scotland it's just 71.8m<sup>2</sup>. A 400-watt solar panel will typically ...





### Photovoltaic (PV) Solar Panels

Under typical UK conditions, 1m<sup>2</sup> of PV panel will produce around 100kWh electricity per year, so it would take around 2.5 years to "pay back" the energy cost of the panel. PV panels have an ...



### How Much Solar Power Can My Roof Generate?

850 square feet of usable roof space for solar: The average U.S. roof is about 1,700 square feet. You should never put panels on northern roof planes. So with a north/south roof, that gives you 850 square feet. 400 ...



### Solar Panel Sizes and Wattage Explained

For example, a 1,500-square-foot house can need around 630 kWh each month while a 3,000-square-foot house can use 1,200 kWh. Note: Solar wattage may vary depending on house size and electricity consumption.



### The Ultimate Guide to Solar Panel Output

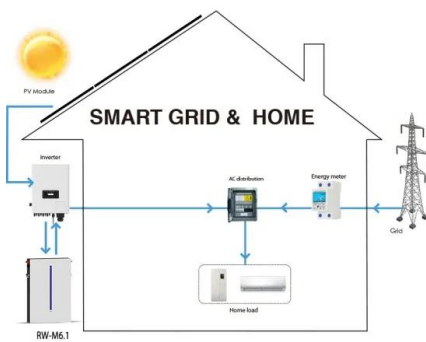
Output = [Solar Panel Size (in square meters) × 1000] × Solar Panel Efficiency (percentage as a decimal) × Number of peak sun hours per day. Example . Suppose the solar panel size is 1.6 square meters. 1.6 × 1000 = ...





## Guide to Solar Panel Sizes & Dimensions (November ...)

Solar panel sizes and wattage range from 250W to 450W, taking up 1.6 to 2 square metres per panel. One of the most important things to consider when getting solar panels for your home is the specific solar panel ...



## Solar Panel Efficiency Calculator and Formula - Dot Watts®

The only difference between a solar panel's efficiency and its rated wattage is that a high efficient solar panel will take less space to produce the same amount of power than ...

## How Many Batteries Are Needed For A 3,000 Watt Inverter?

For a 3,000-watt inverter, a single 12V 250AH battery must run at full power. The duration would take approximately 1 hour, depending on battery discharge rate and ...



## [Solar Panel Sizes & Dimensions UK \(2024\)](#)

The size of a solar panel is measured in watts, which indicates the amount of power it can generate. The most common solar panel sizes for residential installations are between 250W and 400W, while larger commercial ...



### Solar Panel Square Footage Calculator

To achieve a 10kW solar system you are going to take 10,000 watts (10kW) and divide it by the wattage of a single solar panel (370 watts). This will give you a reading of ...



### **400 Watt Solar Panel (Everything you need to know)**

Generally, a 400-watt panel will be 40 Volts and 10 Amps, equal to 400 watts! It's, therefore, easy to understand that a 400-watt panel can produce 400 watts of power. The ...

### **How Many Solar Panels Do I Need? Calculate for Your Home**

Finally, you can divide the system size by the power output of a solar panel to find out how many solar panels you need. The higher a solar panel's power output, the fewer panels you need to ...



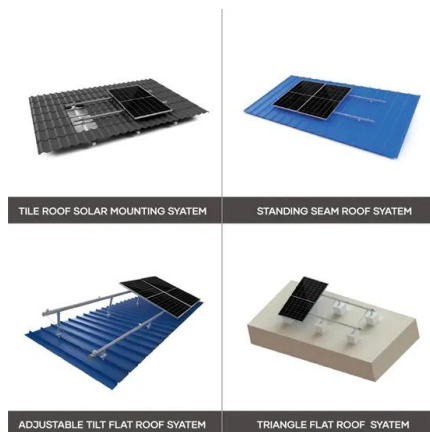
### **Solar Panel Watts Per Square Foot: 'We (Finally) Did The Math'**

Now let's divide the 400W wattage by this area to get the solar output per 1 square foot: Tesla Roof Panel Watts Per Square Foot =  $400W / 21.29 \text{ Sq Ft} = 18.79 \text{ Watts Per Square Foot}$ . We ...



## How many solar panels do you need to power a UK home?

How many people live there; Whether you use gas, or just electricity; The best way of knowing exactly how much energy you use at home is to install a smart meter.



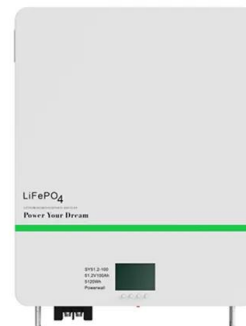
## How Much Power Do Solar Panels Produce Per Square Meter?

The average solar panel has an input rate of roughly 1000 Watts per square meter, while the majority of solar panels on the market have an input rate of around 15-20 percent. As a result, ...



## Solar Panel Cost in 2024: How to Estimate The Cost of ...

Today's premium monocrystalline solar panels typically cost between \$1 and \$1.50 per Watt, putting the price of a single 400-watt solar panel between \$400 and \$600, depending on how you buy it. Less efficient polycrystalline panels ...



## How to Calculate the Surface Area Required by Solar Panels

Total Area =  $3000 / 200 = 15$  meter squared  
Number of panels =  $15 / 1.5 = 10$  panels of 1.5 meter squared each. You must remember that this is the best case calculation. ...



## Contact Us

---

For catalog requests, pricing, or partnerships, please visit:  
<https://www.vdbconstruction.co.za>